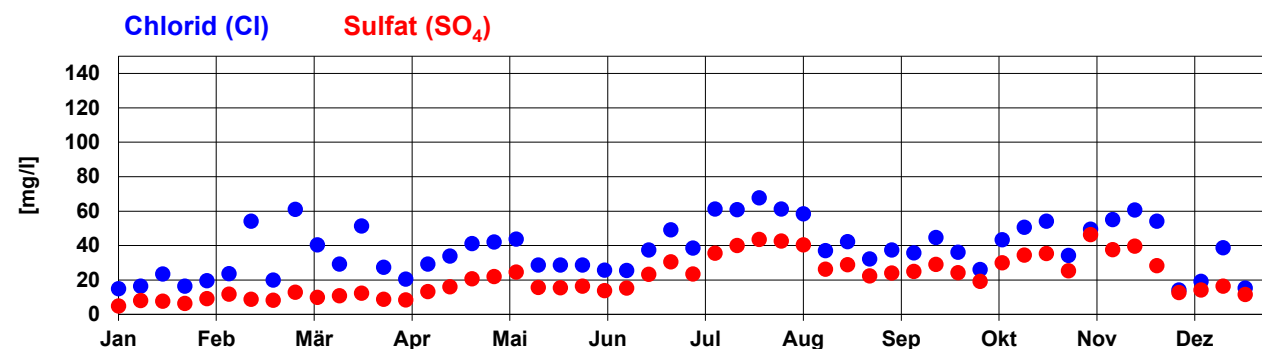
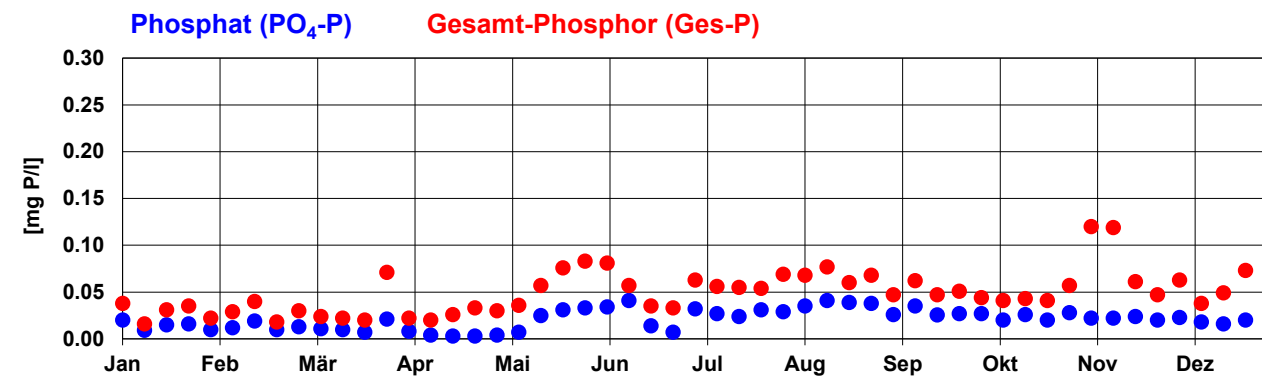
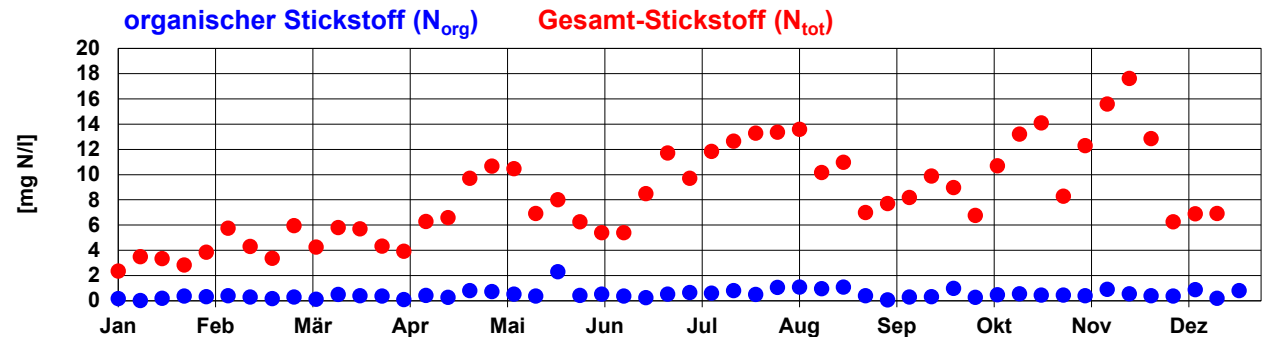
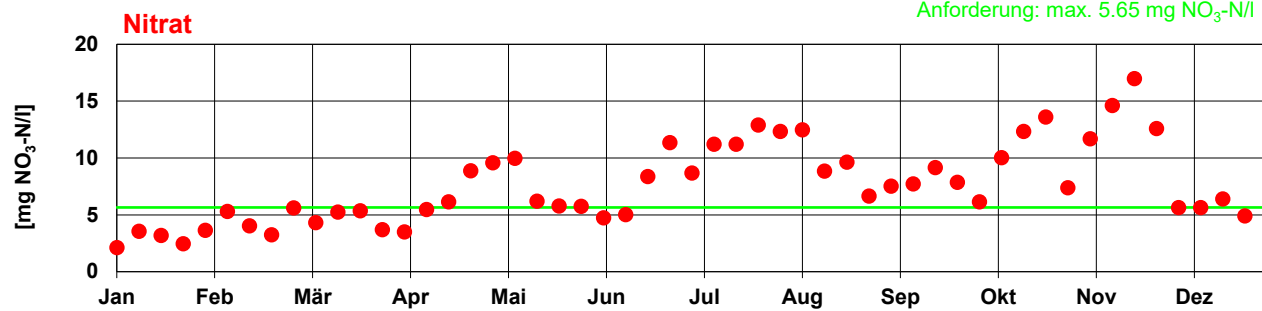
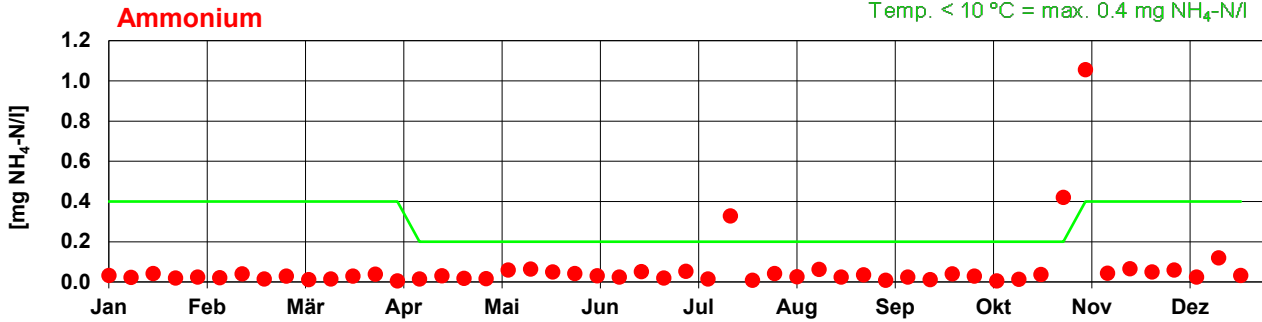
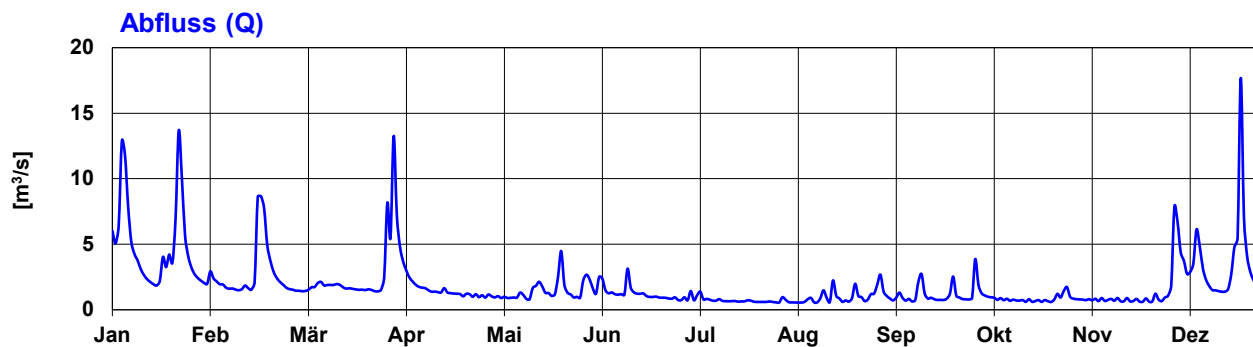
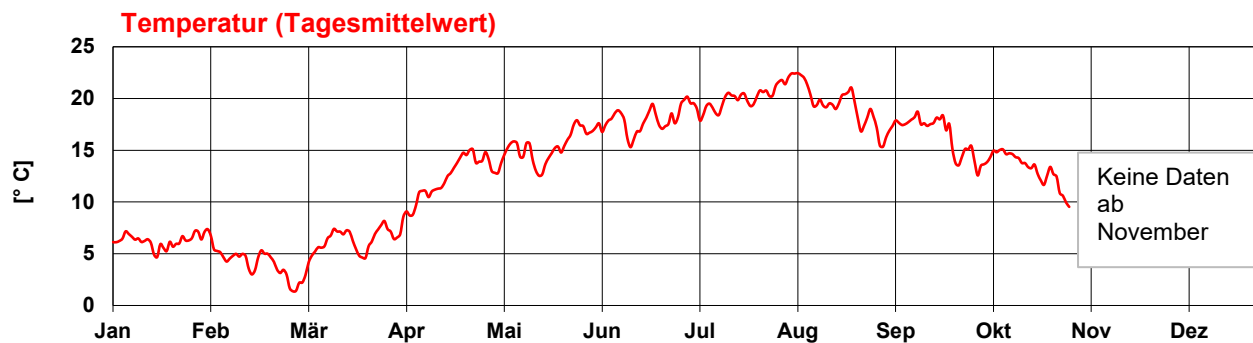


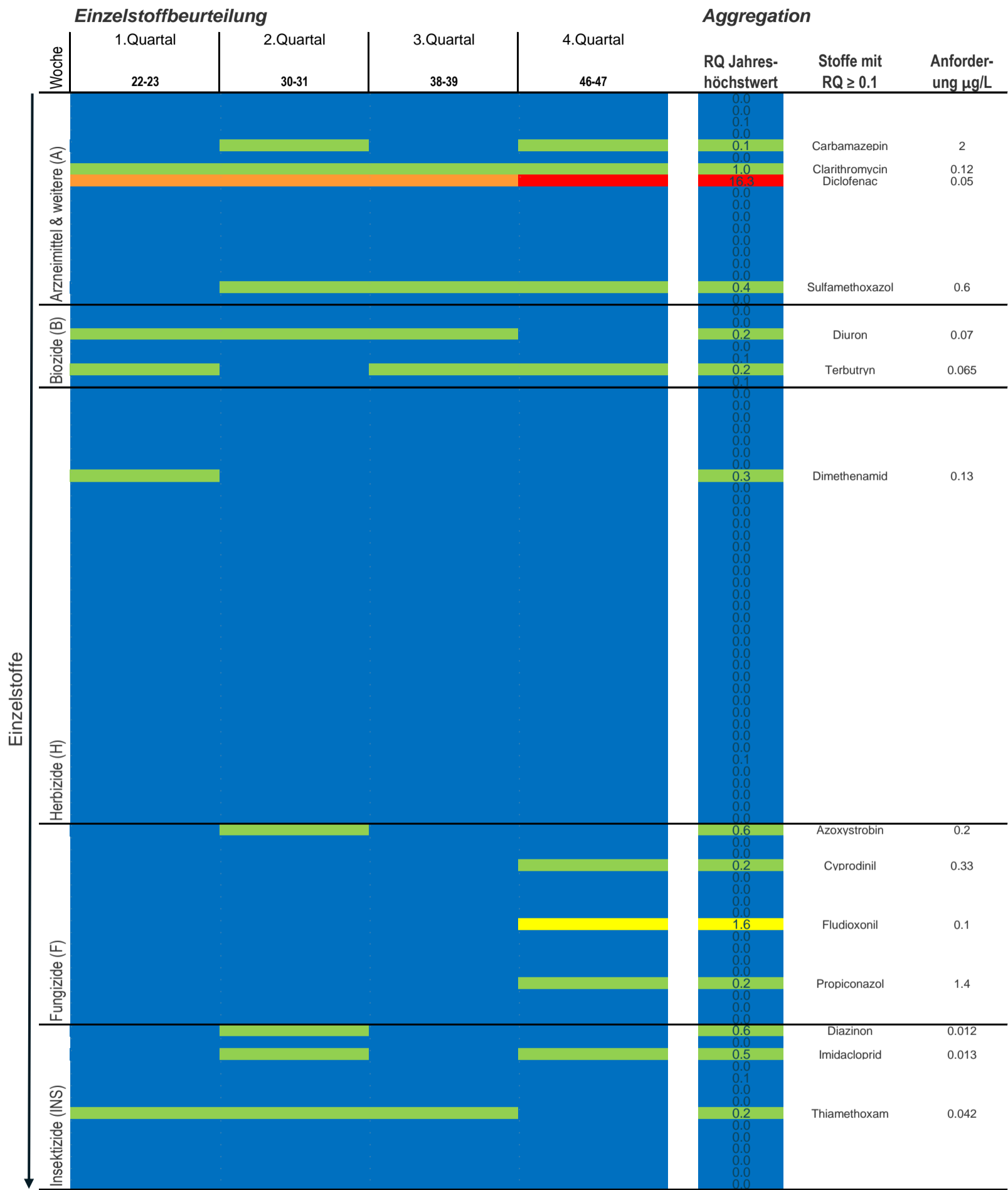
# Jona nach Rüti

2018 Hauptmessstelle 917

Anforderung: Temp. > 10 °C = max. 0.2 mg NH<sub>4</sub>-N/l  
Temp. < 10 °C = max. 0.4 mg NH<sub>4</sub>-N/l







**Mischungstoxizität Wirkstoffgruppen**

Wirkstoffgruppe	1. Quartal	2. Quartal	3. Quartal	4. Quartal
A, B	5.0	5.4	6.3	18.3
H	0.1	0.1	0.0	0.0
F	0.1	0.7	0.2	2.0
INS	0.2	1.2	0.2	0.5

**Jahresbeurteilung**

<b>18</b>	Arzneimittel, Biozide, weitere
<b>0.12</b>	Herbizide
<b>1.98</b>	Fungizide
<b>1.2</b>	Insektizide

**Mischungstoxizität taxonomische Gruppen**

Taxonomische Gruppe	1. Quartal	2. Quartal	3. Quartal	4. Quartal	Jahresbeurteilung
P	1.2	2.1	1.5	3.6	<b>3.6</b> Pflanzen
I	5.0	6.7	6.1	20.1	<b>20</b> Invertebraten
V	4.4	4.3	5.2	18.3	<b>18</b> Vertebraten