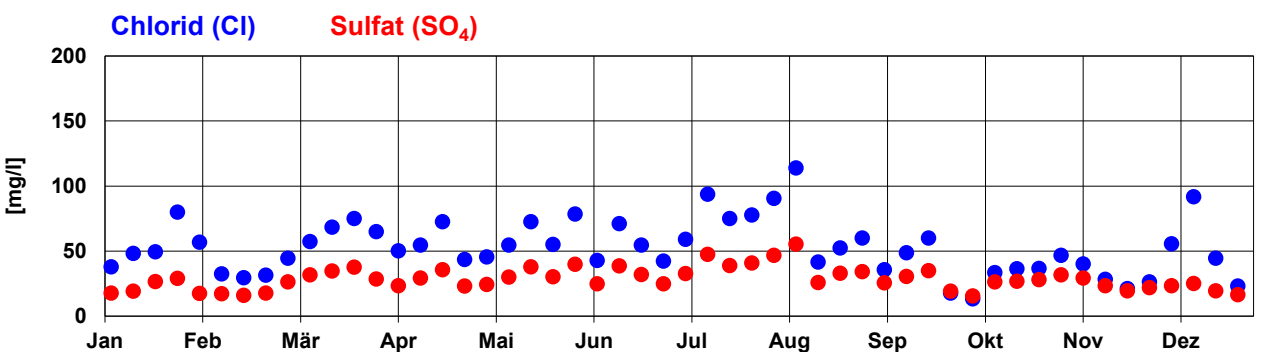
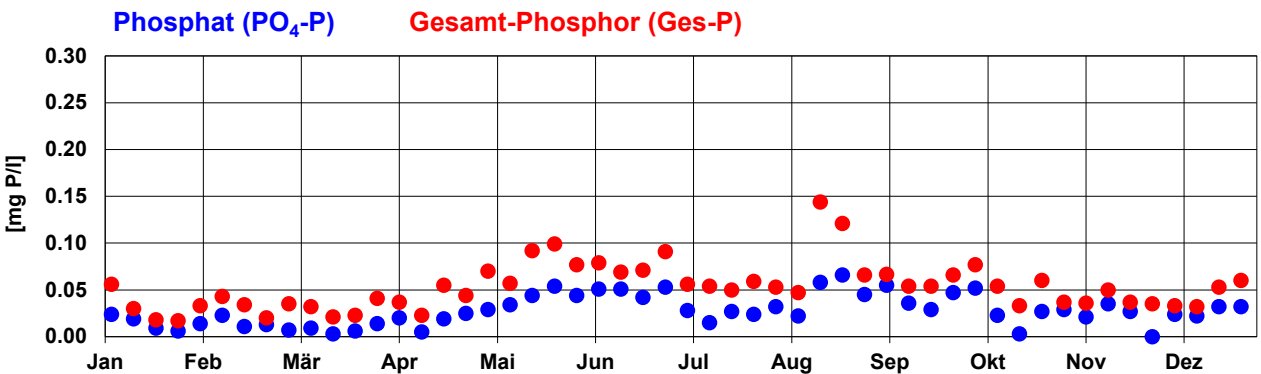
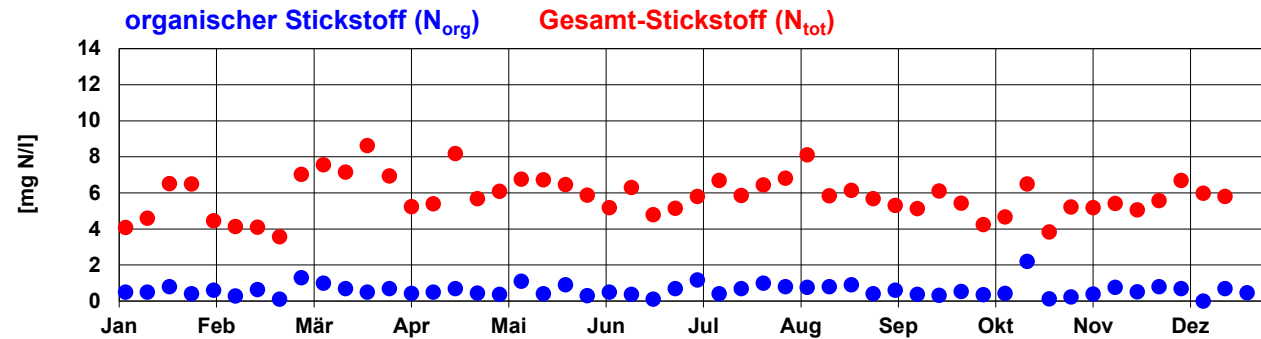
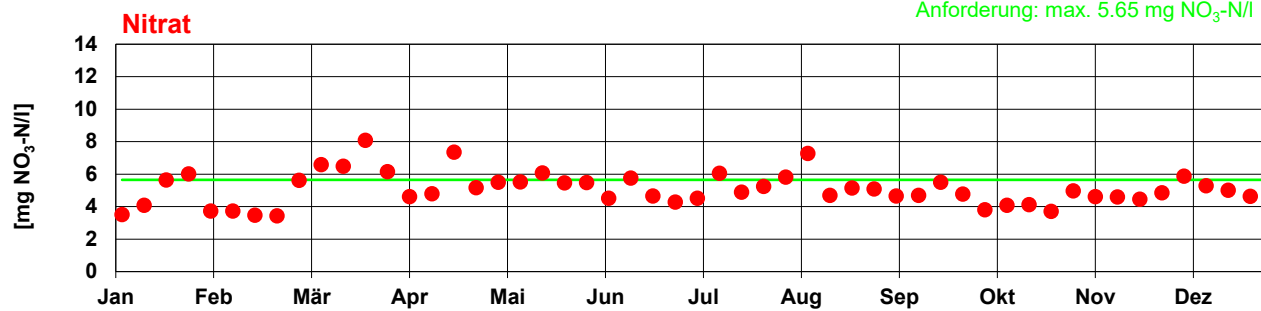
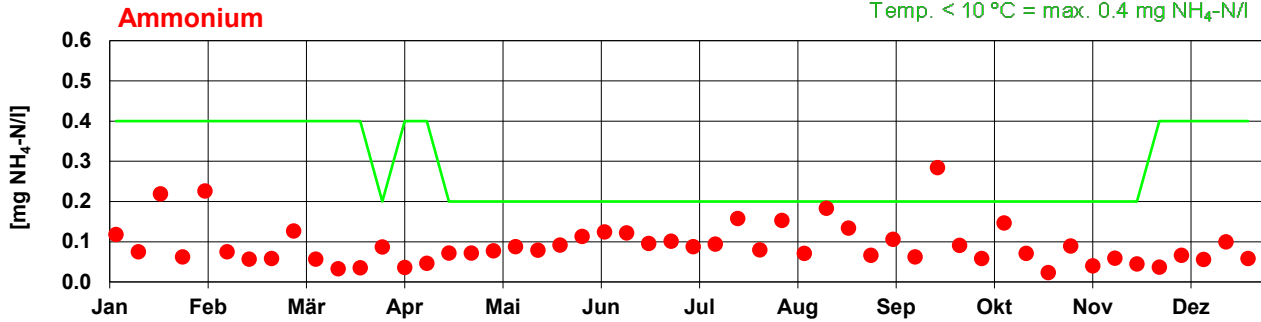
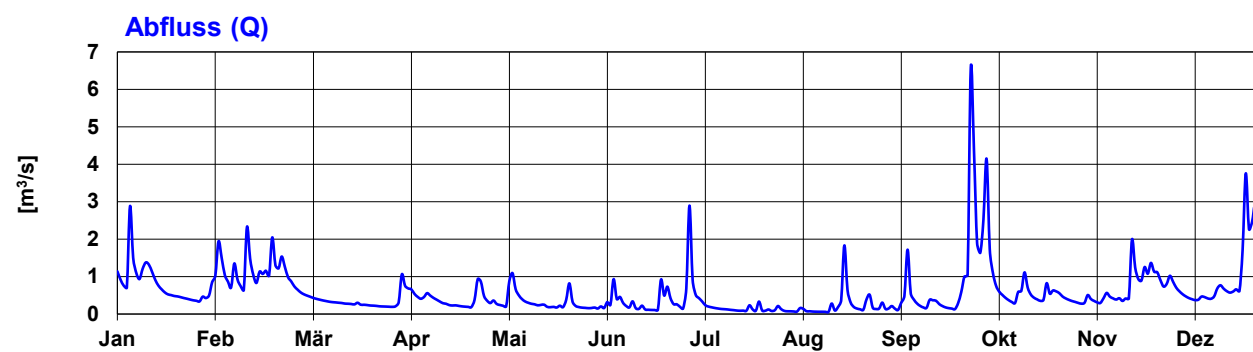
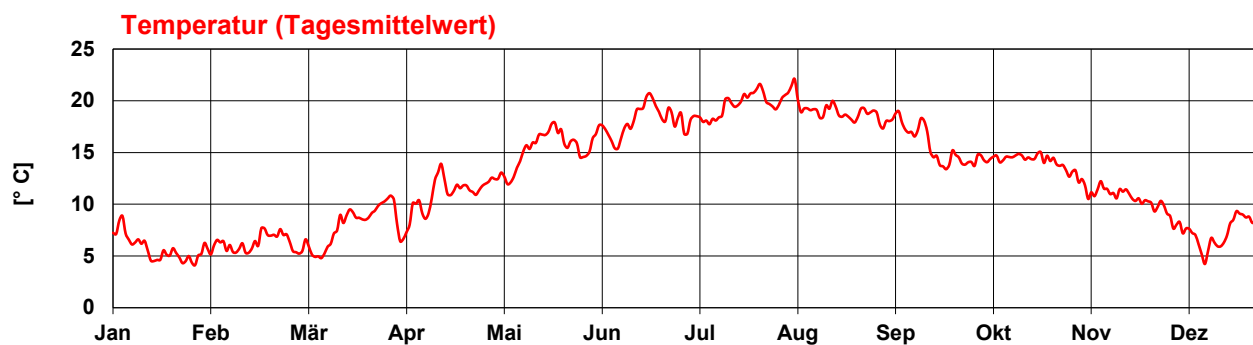


Aabach bei Mönchaltorf

2022 Hauptmessstelle 915

Anforderung: Temp. > 10 °C = max. 0.2 mg NH₄-N/l
Temp. < 10 °C = max. 0.4 mg NH₄-N/l

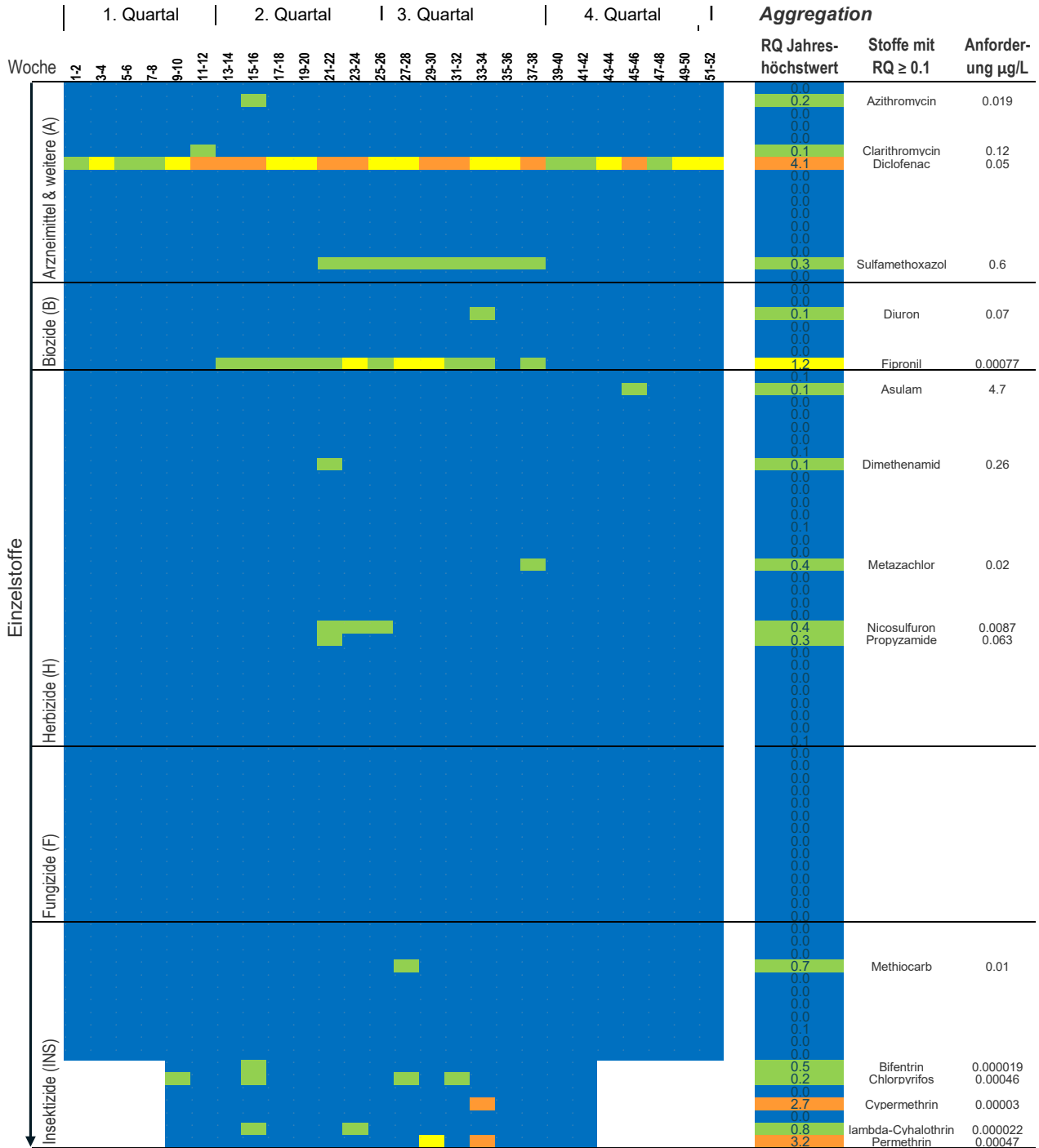




Aabach Mönchaltorf

2022 - Messstelle 915 Messprogramm NAWA mit finanzieller Unterstützung Bafu

Mikroverunreinigungen in 14-Tages-Mischproben



Mischungstoxizität Wirkstoffgruppen

A, B	0.5	1.7	1.0	0.7	1.3	2.8	2.9	3.5	1.7	2.9	5.1	4.0	2.4	2.8	3.6	3.2	2.6	1.4	2.8	0.6	0.8	1.7	2.7	0.6	1.3	1.3	
H	0.0	0.0	0.0	0.0	0.0	0.0	0.0	0.0	0.1	1.0	0.6	0.5	0.1	0.1	0.0	0.1	0.1	0.5	0.1	0.1	0.1	0.2	0.0	0.0	0.1		
F	0.0	0.0	0.0	0.0	0.0	0.0	0.0	0.0	0.0	0.0	0.0	0.0	0.0	0.0	0.0	0.0	0.0	0.0	0.0	0.0	0.0	0.0	0.0	0.0	0.0	0.0	
INS	0.0	0.0	0.0	0.0	0.2	0.0	0.0	1.2	0.0	0.1	0.0	0.8	0.0	0.8	1.9	0.1	5.9	0.0	0.0	0.0	0.0	0.0	0.0	0.0	0.0	0.0	

Mischungstoxizität taxonomische Gruppen

P	0.0	0.1	0.0	0.0	0.0	0.3	0.1	0.3	0.1	0.3	1.2	0.9	0.7	0.3	0.4	0.4	0.4	0.3	0.8	0.1	0.2	0.2	0.2	0.0	0.1	0.0
I	0.5	1.7	0.9	0.7	1.5	2.7	2.8	4.6	1.6	2.7	5.0	4.6	2.3	3.4	5.2	3.0	8.2	1.2	2.5	0.5	0.7	1.6	2.7	0.6	1.3	1.3
V	0.5	1.7	0.9	0.7	1.3	2.6	2.6	2.3	1.3	1.8	4.1	2.6	1.5	1.6	2.2	2.0	1.7	1.2	2.0	0.5	0.7	1.6	2.7	0.6	1.3	1.3

Jahresbeurteilung

5.1	Arzneimittel, Biozide, ...
1.0	Herbizide
0.0	Fungizide
5.9	Insektizide
1.2	Pflanzen
8.2	Invertebraten
4.1	Vertebraten