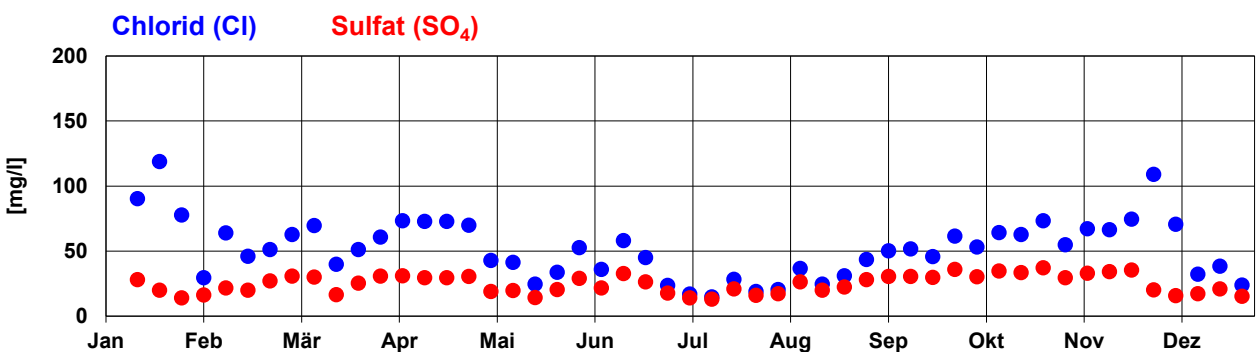
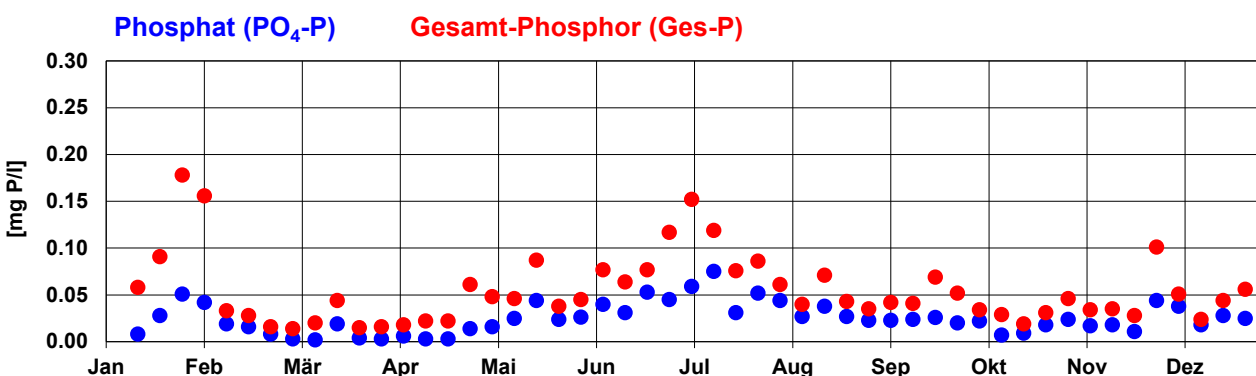
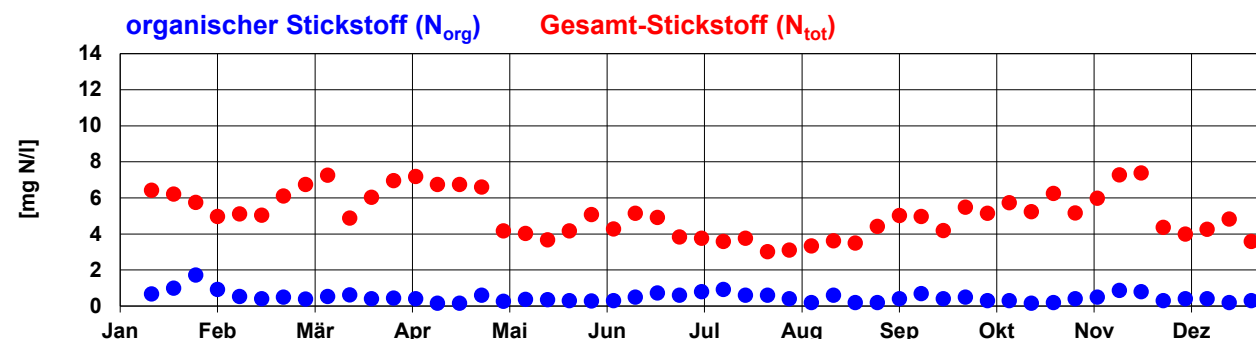
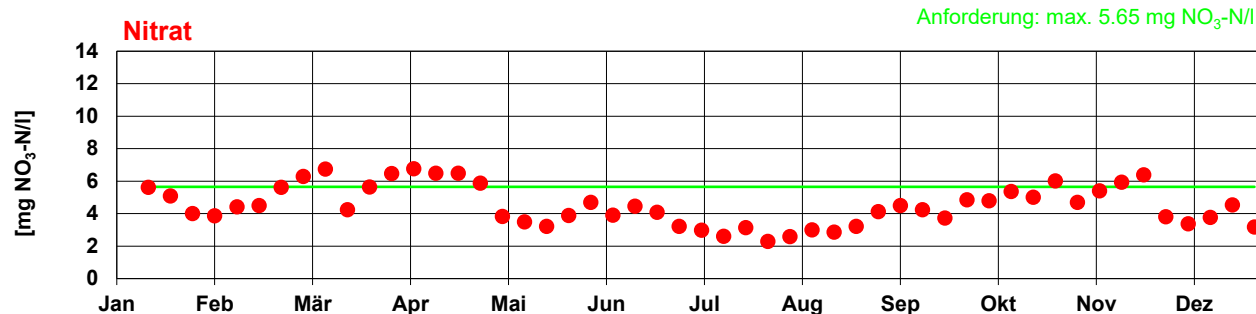
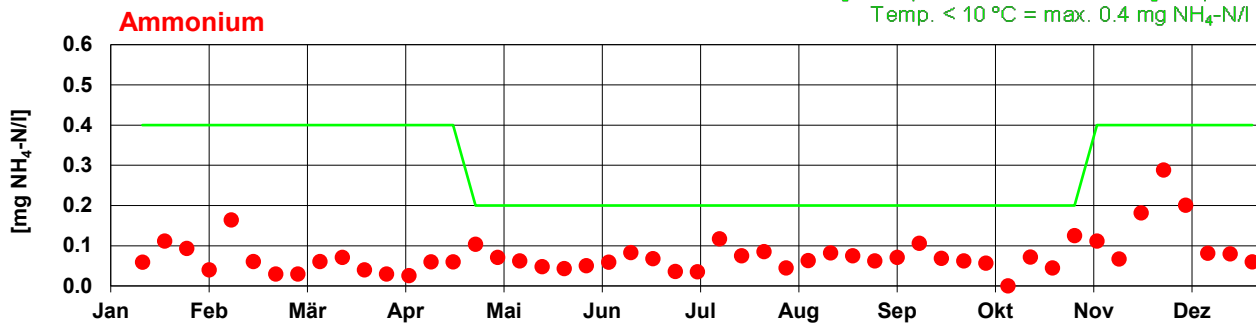
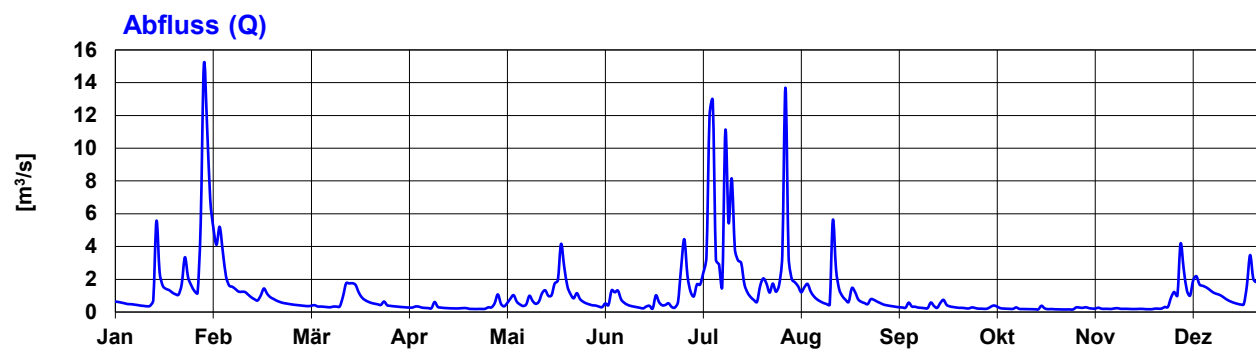
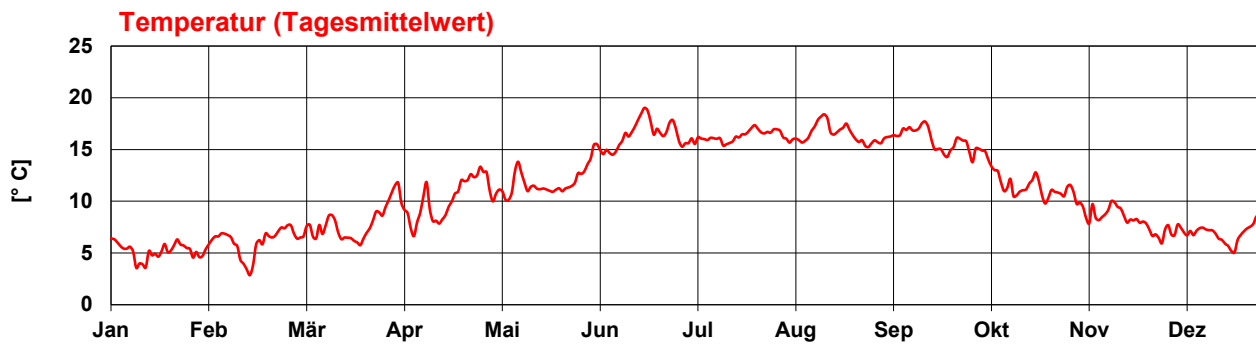


Aabach bei Mönchaltorf

2021 Hauptmessstelle 915

Anforderung: Temp. > 10 °C = max. 0.2 mg NH₄-N/l
Temp. < 10 °C = max. 0.4 mg NH₄-N/l

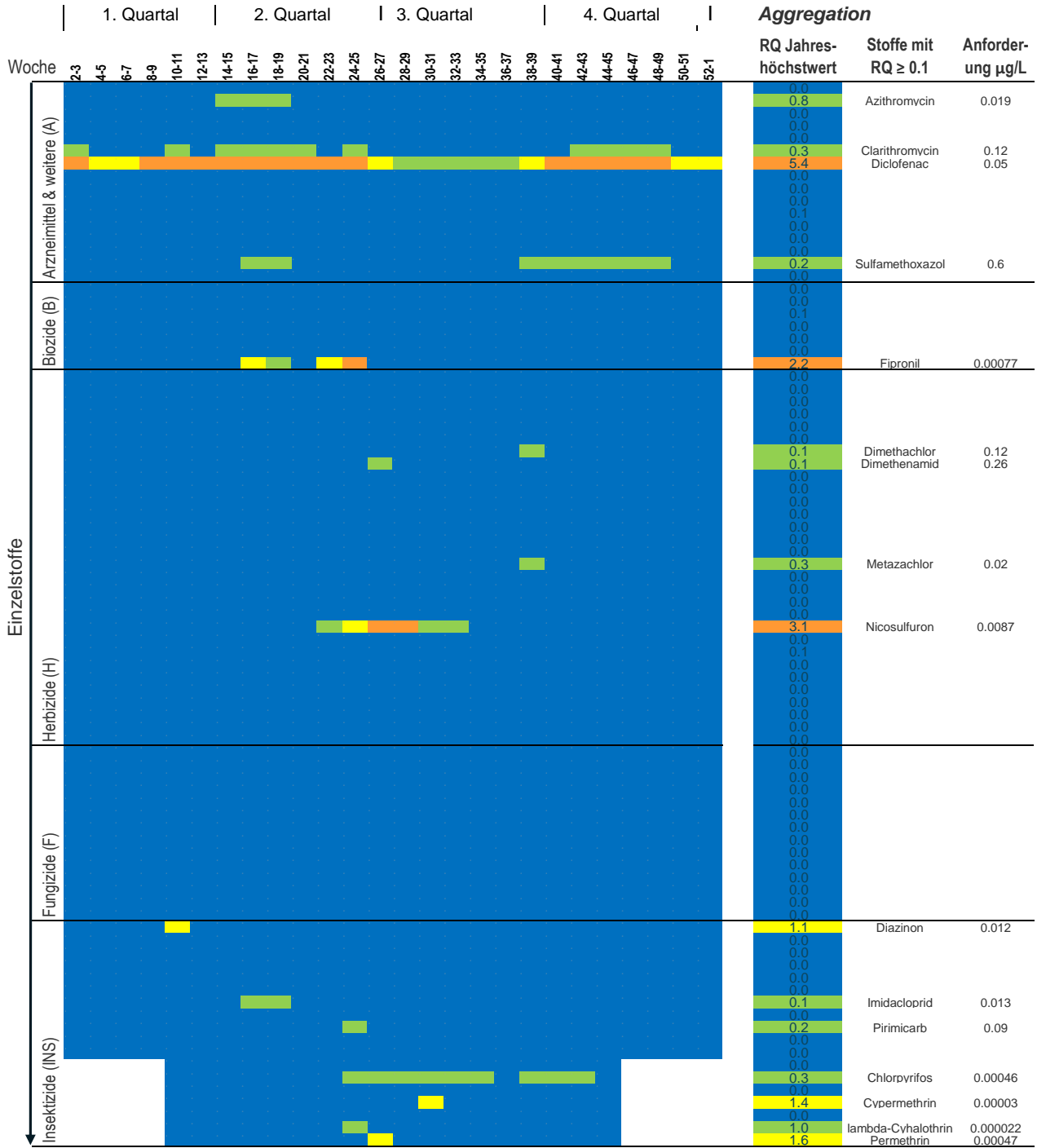




Aabach Mönchaltorf

2021 - Messstelle 915 Messprogramm NAWA mit finanzieller Unterstützung Bafu

Mikroverunreinigungen in 14-Tages-Mischproben



Mischungstoxizität Wirkstoffgruppen

A, B	4.6	2.0	1.4	2.8	5.3	2.3	5.5	7.3	6.1	2.3	4.0	6.3	2.1	0.3	0.3	0.4	0.8	1.0	2.1	3.3	3.5	4.7	5.7	4.4	1.7	1.1
H	0.0	0.0	0.0	0.0	0.1	0.0	0.0	0.2	0.1	0.0	0.2	1.3	2.9	3.3	1.0	0.7	0.0	0.1	0.5	0.1	0.0	0.0	0.0	0.0	0.0	0.0
F	0.0	0.0	0.0	0.0	0.0	0.0	0.0	0.0	0.0	0.0	0.0	0.0	0.0	0.0	0.0	0.0	0.0	0.0	0.0	0.0	0.0	0.0	0.0	0.0	0.0	0.0
INS	0.0	0.0	0.0	0.0	1.1	0.0	0.0	0.1	0.1	0.0	0.0	1.5	1.8	0.2	1.7	0.2	0.1	0.0	0.1	0.1	0.1	0.0	0.0	0.0	0.0	0.0

Mischungstoxizität taxonomische Gruppen

P	0.2	0.7	0.7	0.7	0.3	0.1	1.2	1.4	1.0	0.2	0.4	1.7	3.1	3.3	1.0	0.7	0.1	0.1	0.6	0.3	0.3	0.3	0.3	0.3	0.0	0.0
I	4.6	2.0	1.4	2.7	6.3	2.3	5.4	7.2	6.0	2.3	4.0	7.7	3.7	0.6	1.9	0.5	0.9	1.0	2.1	3.3	3.4	4.5	5.5	4.3	1.7	1.1
V	4.4	1.9	1.4	2.7	5.1	2.2	4.4	4.9	4.2	2.2	2.7	3.7	1.9	0.3	0.2	0.3	0.7	1.0	2.0	3.2	3.2	4.4	5.4	4.1	1.7	1.1

Jahresbeurteilung

- 7.3** Arzneimittel, Biozide, ...
- 3.3** Herbizide
- 0.0** Fungizide
- 1.8** Insektizide
- 3.3** Pflanzen
- 7.7** Invertebraten
- 5.4** Vertebraten