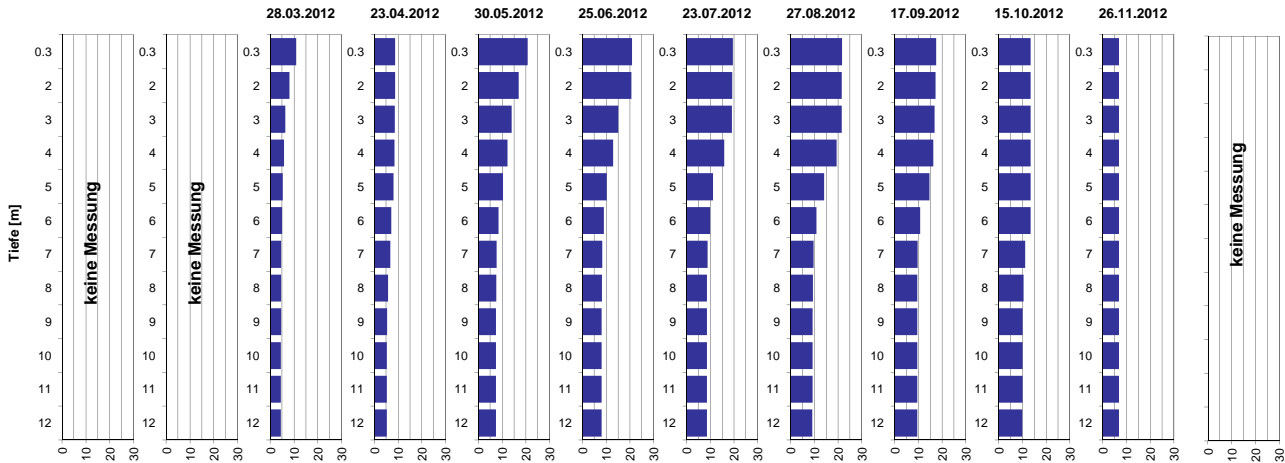


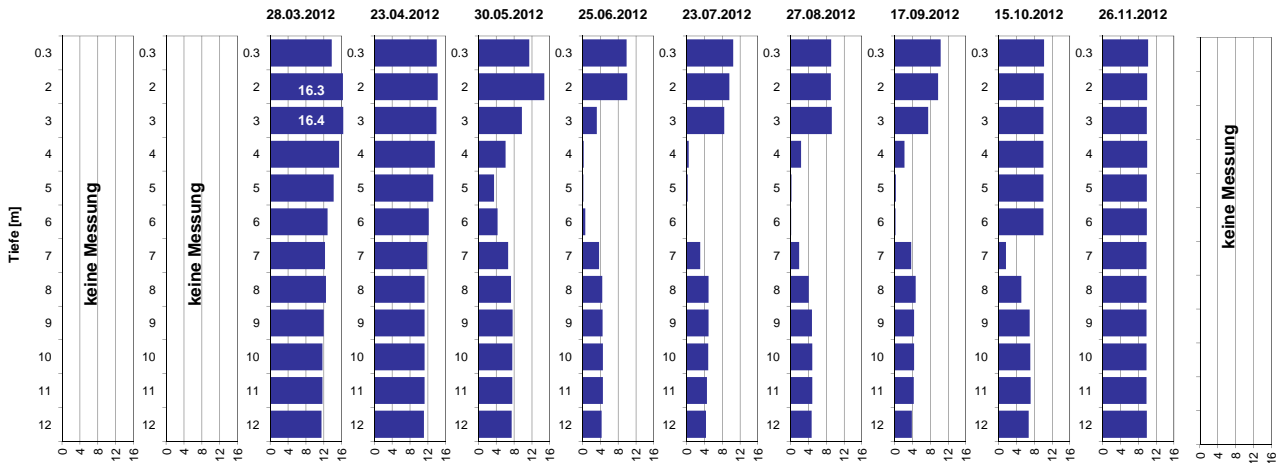
Tiefenprofile Hüttnersee 2012

Temperatur [°C]



Tiefe [m]	28.03.2012 Temp [°C]	23.04.2012 Temp [°C]	30.05.2012 Temp [°C]	25.06.2012 Temp [°C]	23.07.2012 Temp [°C]	27.08.2012 Temp [°C]	17.09.2012 Temp [°C]	15.10.2012 Temp [°C]	26.11.2012 Temp [°C]
0.3	10.9	8.8	20.7	20.9	19.5	21.6	17.5	13.4	6.8
2.0	8.1	8.7	17.0	20.6	19.3	21.6	17.2	13.4	6.8
3.0	6.3	8.6	14.0	15.1	19.1	21.5	16.8	13.4	6.8
4.0	5.7	8.5	12.2	12.8	15.9	19.4	16.3	13.4	6.8
5.0	5.2	8.1	10.3	10.2	11.1	14.2	14.7	13.4	6.8
6.0	4.9	7.1	8.5	9.0	9.9	10.9	10.8	13.4	6.8
7.0	4.5	6.7	7.6	8.3	8.9	9.6	9.6	11.1	6.8
8.0	4.5	5.7	7.5	8.1	8.6	9.3	9.6	10.5	6.8
9.0	4.5	5.4	7.4	8.1	8.6	9.3	9.5	10.1	6.8
10.0	4.5	5.3	7.4	8.1	8.6	9.2	9.5	10.0	6.8
11.0	4.5	5.2	7.4	8.1	8.6	9.2	9.5	10.0	6.8
12.0	4.4	5.2	7.4	8.0	8.6	9.2	9.5	10.0	6.8

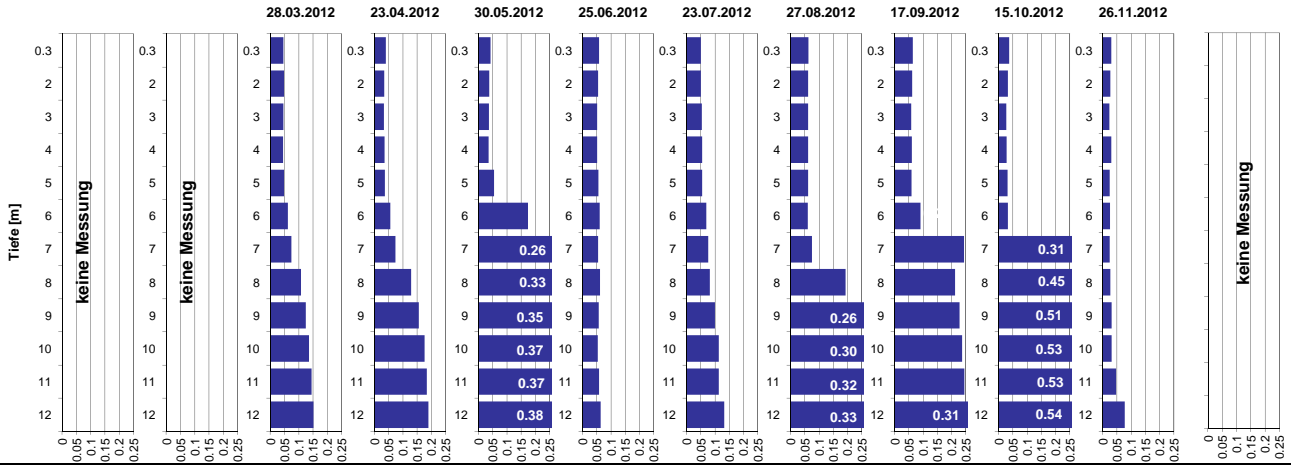
Sauerstoff [mg O₂/l]



Tiefe [m]	28.03.2012 O2 [mg O ₂ /l]	23.04.2012 O2 [mg O ₂ /l]	30.05.2012 O2 [mg O ₂ /l]	25.06.2012 O2 [mg O ₂ /l]	23.07.2012 O2 [mg O ₂ /l]	27.08.2012 O2 [mg O ₂ /l]	17.09.2012 O2 [mg O ₂ /l]	15.10.2012 O2 [mg O ₂ /l]	26.11.2012 O2 [mg O ₂ /l]
0.3	13.8	14.0	11.4	9.9	10.5	9.1	10.3	10.2	10.2
2.0	16.3	14.2	14.8	10.0	9.6	9.1	9.8	10.1	10.0
3.0	16.4	13.9	9.8	3.2	8.5	9.3	7.5	10.1	9.9
4.0	15.5	13.6	6.1	0.3	0.5	2.3	2.2	10.0	9.9
5.0	14.2	13.3	3.5	0.2	0.3	0.2	0.3	10.1	9.9
6.0	12.8	12.2	4.3	0.6	0.1	0.1	0.2	10.1	9.9
7.0	12.3	11.9	6.7	3.7	3.1	1.9	3.7	1.6	9.9
8.0	12.5	11.3	7.3	4.5	4.9	4.1	4.7	5.1	9.9
9.0	12.0	11.2	7.6	4.5	4.9	4.8	4.4	6.9	9.8
10.0	11.7	11.3	7.6	4.6	4.9	4.9	4.4	7.1	9.9
11.0	11.7	11.3	7.6	4.6	4.6	4.9	4.3	7.1	9.8
12.0	11.5	11.1	7.5	4.3	4.4	4.7	3.9	6.8	9.9

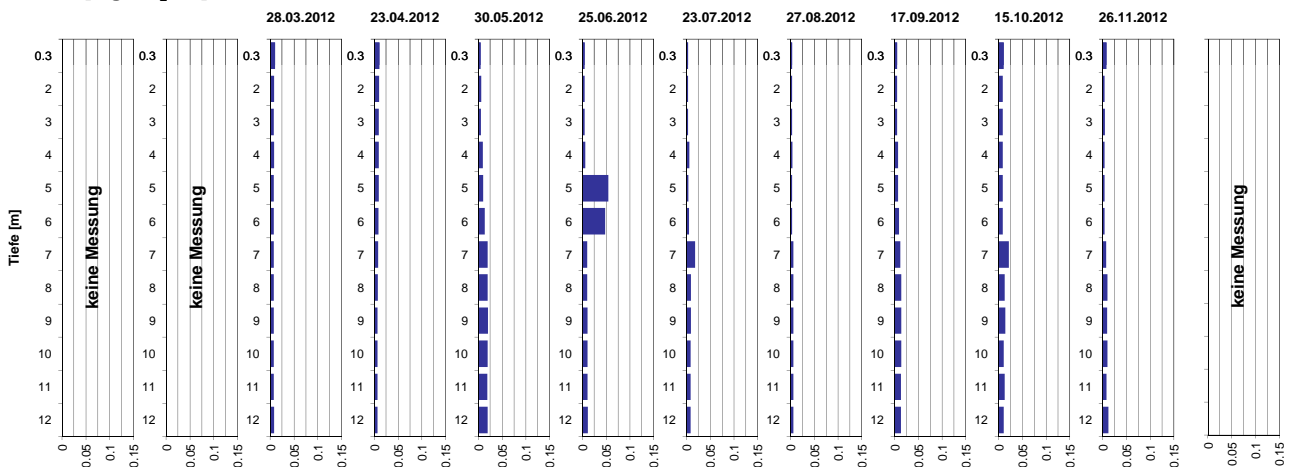
Tiefenprofile Hüttnersee 2012

Ammonium [mg NH₄-N/l]



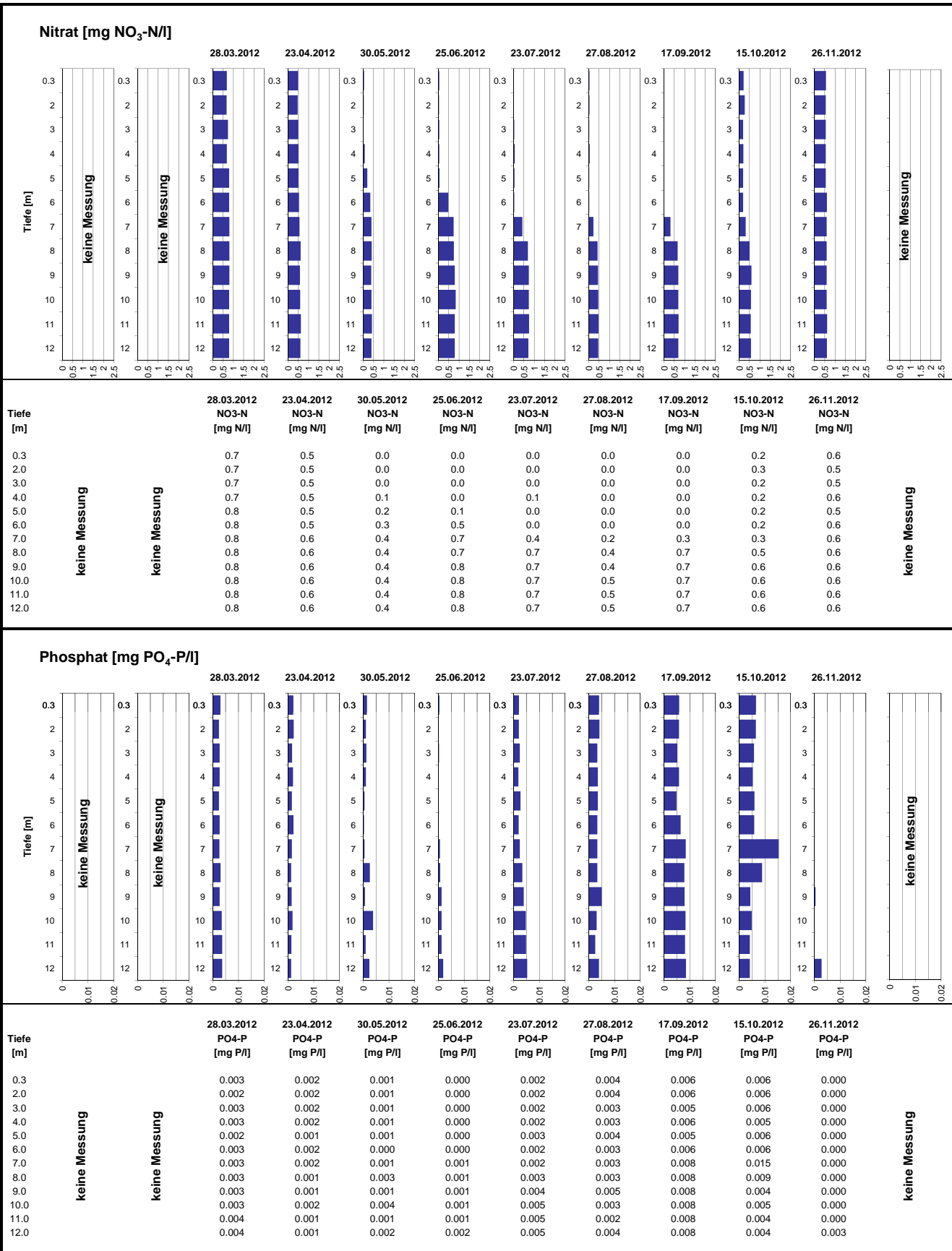
Tiefe [m]	28.03.2012 NH ₄ -N [mg N/l]	23.04.2012 NH ₄ -N [mg N/l]	30.05.2012 NH ₄ -N [mg N/l]	25.06.2012 NH ₄ -N [mg N/l]	23.07.2012 NH ₄ -N [mg N/l]	27.08.2012 NH ₄ -N [mg N/l]	17.09.2012 NH ₄ -N [mg N/l]	15.10.2012 NH ₄ -N [mg N/l]	26.11.2012 NH ₄ -N [mg N/l]
0.3	keine Messung	0.05	0.04	0.04	0.06	0.05	0.06	0.04	0.03
2.0	keine Messung	0.05	0.03	0.04	0.05	0.05	0.06	0.03	0.03
3.0	keine Messung	0.05	0.03	0.04	0.05	0.05	0.06	0.03	0.02
4.0	keine Messung	0.04	0.04	0.04	0.05	0.05	0.06	0.03	0.03
5.0	keine Messung	0.05	0.04	0.05	0.06	0.05	0.06	0.03	0.02
6.0	keine Messung	0.06	0.06	0.17	0.06	0.07	0.06	0.03	0.03
7.0	keine Messung	0.07	0.07	0.26	0.05	0.08	0.24	0.31	0.02
8.0	keine Messung	0.11	0.13	0.33	0.06	0.08	0.19	0.45	0.03
9.0	keine Messung	0.12	0.16	0.35	0.06	0.10	0.23	0.51	0.03
10.0	keine Messung	0.14	0.18	0.37	0.05	0.11	0.24	0.53	0.03
11.0	keine Messung	0.14	0.18	0.37	0.06	0.11	0.25	0.53	0.05
12.0	keine Messung	0.15	0.19	0.38	0.06	0.13	0.31	0.54	0.08

Nitrit [mg NO₂-N/l]



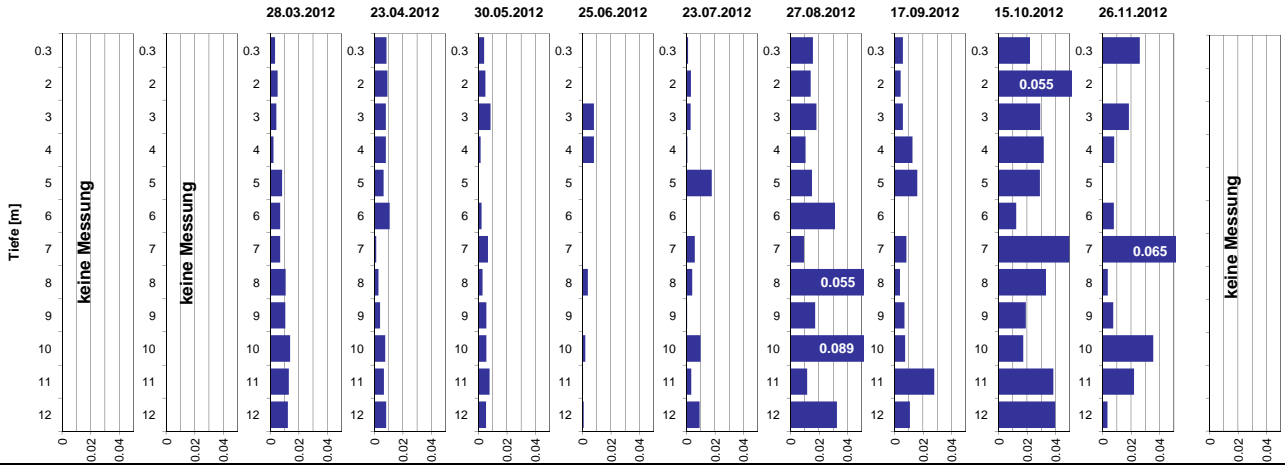
Tiefe [m]	28.03.2012 NO ₂ -N [mg N/l]	23.04.2012 NO ₂ -N [mg N/l]	30.05.2012 NO ₂ -N [mg N/l]	25.06.2012 NO ₂ -N [mg N/l]	23.07.2012 NO ₂ -N [mg N/l]	27.08.2012 NO ₂ -N [mg N/l]	17.09.2012 NO ₂ -N [mg N/l]	15.10.2012 NO ₂ -N [mg N/l]	26.11.2012 NO ₂ -N [mg N/l]
0.3	keine Messung	0.010	0.011	0.005	0.005	0.003	0.003	0.005	0.010
2.0	keine Messung	0.008	0.010	0.005	0.005	0.003	0.003	0.005	0.008
3.0	keine Messung	0.007	0.009	0.005	0.004	0.003	0.003	0.005	0.008
4.0	keine Messung	0.008	0.009	0.009	0.006	0.006	0.007	0.008	0.008
5.0	keine Messung	0.007	0.009	0.010	0.054	0.003	0.007	0.009	0.004
6.0	keine Messung	0.007	0.008	0.013	0.048	0.005	0.009	0.009	0.004
7.0	keine Messung	0.007	0.008	0.019	0.010	0.018	0.012	0.021	0.007
8.0	keine Messung	0.007	0.007	0.019	0.010	0.009	0.014	0.013	0.010
9.0	keine Messung	0.007	0.007	0.020	0.011	0.009	0.014	0.014	0.009
10.0	keine Messung	0.007	0.006	0.019	0.010	0.008	0.014	0.010	0.010
11.0	keine Messung	0.007	0.006	0.019	0.011	0.008	0.013	0.013	0.008
12.0	keine Messung	0.008	0.006	0.019	0.011	0.009	0.013	0.011	0.012

Tiefenprofile Hüttnersee 2012



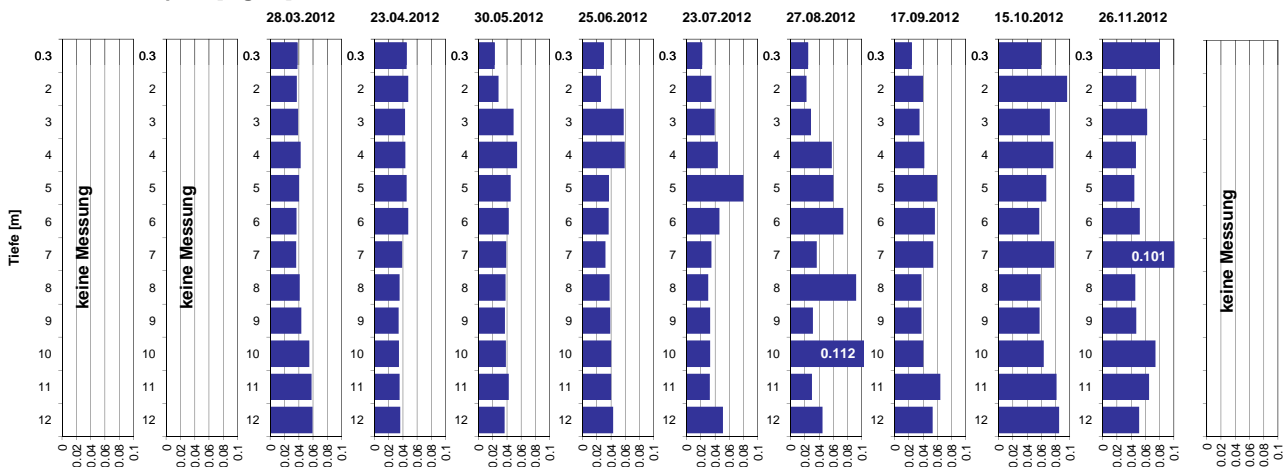
Tiefenprofile Hüttnersee 2012

Gelöster Phosphor [mg P/l]



Tiefe [m]	28.03.2012 P-gel [mg P/l]	23.04.2012 P-gel [mg P/l]	30.05.2012 P-gel [mg P/l]	25.06.2012 P-gel [mg P/l]	23.07.2012 P-gel [mg P/l]	27.08.2012 P-gel [mg P/l]	17.09.2012 P-gel [mg P/l]	15.10.2012 P-gel [mg P/l]	26.11.2012 P-gel [mg P/l]
0.3	0.003	0.009	0.004	0.000	0.001	0.016	0.006	0.022	0.026
2.0	0.005	0.009	0.005	0.000	0.003	0.014	0.004	0.055	0.000
3.0	0.004	0.008	0.008	0.008	0.003	0.018	0.006	0.029	0.018
4.0	0.002	0.008	0.001	0.008	0.001	0.010	0.012	0.032	0.008
5.0	0.008	0.007	0.000	0.000	0.018	0.015	0.016	0.029	0.000
6.0	0.007	0.011	0.002	0.000	0.000	0.031	0.000	0.012	0.008
7.0	0.007	0.001	0.007	0.000	0.006	0.009	0.008	0.050	0.065
8.0	0.011	0.003	0.003	0.004	0.004	0.055	0.004	0.033	0.004
9.0	0.011	0.004	0.006	0.000	0.000	0.017	0.007	0.019	0.007
10.0	0.014	0.008	0.006	0.002	0.010	0.089	0.007	0.017	0.035
11.0	0.013	0.007	0.008	0.000	0.003	0.012	0.028	0.038	0.022
12.0	0.012	0.008	0.005	0.001	0.009	0.033	0.011	0.040	0.003

Gesamt-Phosphor [mg P/l]



Tiefe [m]	28.03.2012 P-tot [mg P/l]	23.04.2012 P-tot [mg P/l]	30.05.2012 P-tot [mg P/l]	25.06.2012 P-tot [mg P/l]	23.07.2012 P-tot [mg P/l]	27.08.2012 P-tot [mg P/l]	17.09.2012 P-tot [mg P/l]	15.10.2012 P-tot [mg P/l]	26.11.2012 P-tot [mg P/l]
0.3	0.038	0.045	0.023	0.030	0.022	0.025	0.024	0.060	0.080
2.0	0.037	0.047	0.028	0.026	0.035	0.022	0.040	0.096	0.047
3.0	0.039	0.043	0.049	0.058	0.039	0.028	0.035	0.072	0.062
4.0	0.043	0.043	0.054	0.059	0.044	0.058	0.042	0.077	0.047
5.0	0.040	0.045	0.045	0.037	0.080	0.060	0.060	0.067	0.044
6.0	0.037	0.047	0.042	0.037	0.046	0.074	0.057	0.057	0.052
7.0	0.036	0.039	0.039	0.032	0.035	0.037	0.054	0.078	0.101
8.0	0.041	0.035	0.038	0.038	0.031	0.092	0.038	0.059	0.046
9.0	0.044	0.034	0.037	0.039	0.033	0.031	0.037	0.057	0.047
10.0	0.055	0.035	0.038	0.040	0.033	0.112	0.040	0.063	0.074
11.0	0.058	0.035	0.043	0.040	0.033	0.030	0.064	0.081	0.065
12.0	0.059	0.036	0.037	0.043	0.051	0.045	0.054	0.085	0.051