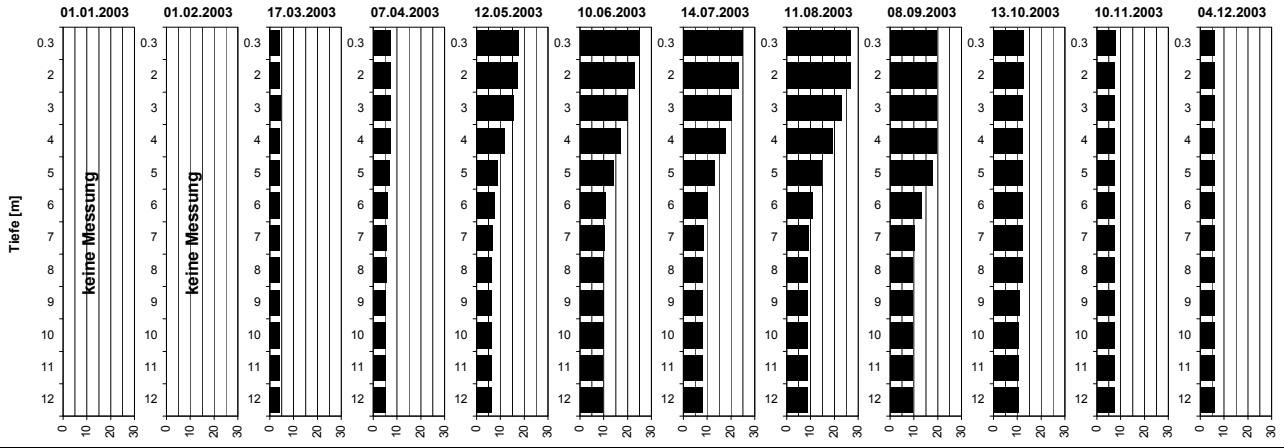
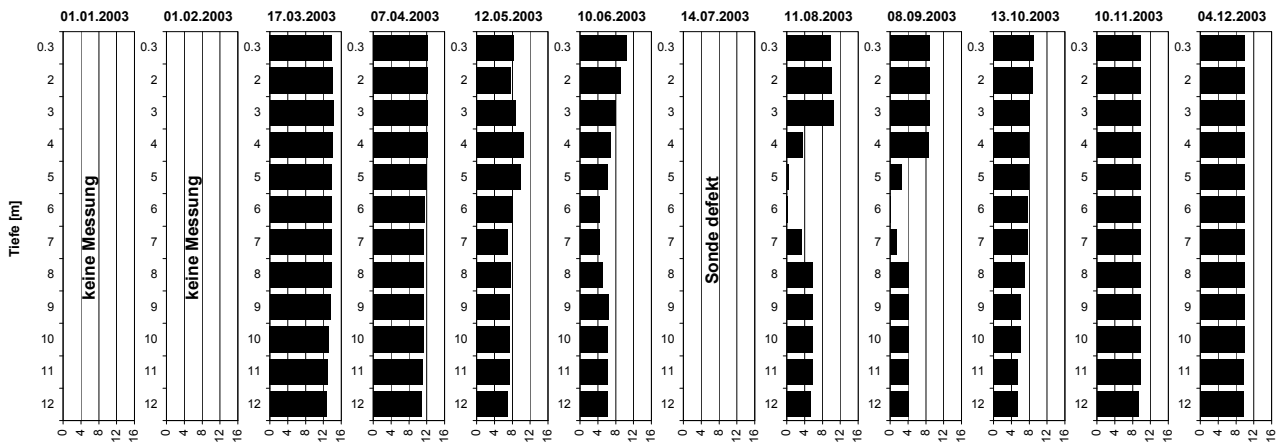


Temperatur [°C]



Tiefe [m]	01.01.2003 Temp [°C]	01.02.2003 Temp [°C]	17.03.2003 Temp [°C]	07.04.2003 Temp [°C]	12.05.2003 Temp [°C]	10.06.2003 Temp [°C]	14.07.2003 Temp [°C]	11.08.2003 Temp [°C]	08.09.2003 Temp [°C]	13.10.2003 Temp [°C]	10.11.2003 Temp [°C]	04.12.2003 Temp [°C]
0.3			4.2	7.2	17.7	24.6	25.0	26.9	19.4	12.6	7.5	6.1
2.0			4.2	7.2	17.0	22.6	23.1	26.7	19.4	12.5	7.4	6.1
3.0			4.2	7.2	15.3	19.7	20.3	23.1	19.4	12.4	7.4	6.1
4.0			4.2	7.2	11.7	17.0	17.6	19.3	19.3	12.3	7.4	6.1
5.0			4.2	6.7	8.8	14.0	13.0	14.4	17.6	12.3	7.4	6.1
6.0			4.2	5.9	7.5	10.6	10.0	10.8	12.9	12.3	7.4	6.1
7.0			4.2	5.4	6.7	10.0	8.7	9.2	10.2	12.3	7.4	6.1
8.0			4.2	5.3	6.4	9.6	8.0	8.7	9.5	12.1	7.4	6.1
9.0			4.2	5.3	6.4	9.6	7.9	8.7	9.5	11.0	7.4	6.1
10.0			4.2	5.2	6.3	9.5	7.9	8.7	9.4	10.8	7.4	6.1
11.0			4.1	5.1	6.4	9.3	7.9	8.7	9.4	10.6	7.4	6.1
12.0			4.1	5.1	6.4	9.3	7.9	8.7	9.4	10.6	7.3	6.1

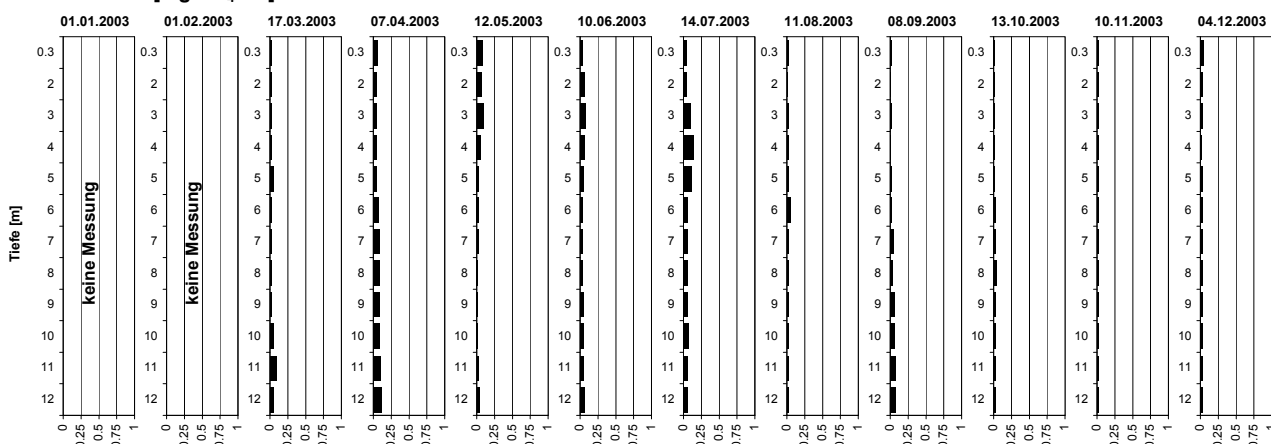
Sauerstoff [mg O₂/l]



Tiefe [m]	01.01.2003 O2 [mg O ₂ /l]	01.02.2003 O2 [mg O ₂ /l]	17.03.2003 O2 [mg O ₂ /l]	07.04.2003 O2 [mg O ₂ /l]	12.05.2003 O2 [mg O ₂ /l]	10.06.2003 O2 [mg O ₂ /l]	14.07.2003 O2 [mg O ₂ /l]	11.08.2003 O2 [mg O ₂ /l]	08.09.2003 O2 [mg O ₂ /l]	13.10.2003 O2 [mg O ₂ /l]	10.11.2003 O2 [mg O ₂ /l]	04.12.2003 O2 [mg O ₂ /l]
0.3			13.9	12.1	8.3	10.3		9.8	8.8	9.0	9.8	9.9
2.0			14.1	12.1	7.6	8.9		9.9	8.8	8.7	9.8	9.9
3.0			14.1	12.1	8.9	7.8		10.4	8.8	8.1	9.8	9.9
4.0			13.9	12.1	10.6	6.7		3.6	8.5	8.0	9.8	9.9
5.0			13.9	11.8	9.7	6.2		0.3	2.5	7.8	9.7	9.9
6.0			13.8	11.5	8.1	4.4		0.2	0.1	7.6	9.7	9.9
7.0			13.8	11.3	7.0	4.4		3.2	1.5	7.7	9.7	9.9
8.0			13.8	11.2	7.6	5.0		5.7	4.1	7.1	9.7	9.9
9.0			13.6	11.2	7.4	6.3		5.8	4.2	6.0	9.7	9.8
10.0			13.2	11.3	7.4	6.2		5.7	4.1	6.0	9.7	9.8
11.0			13.0	11.0	7.4	6.2		5.6	4.1	5.4	9.6	9.8
12.0			12.7	10.7	7.0	6.2		5.4	4.0	5.3	9.3	9.7

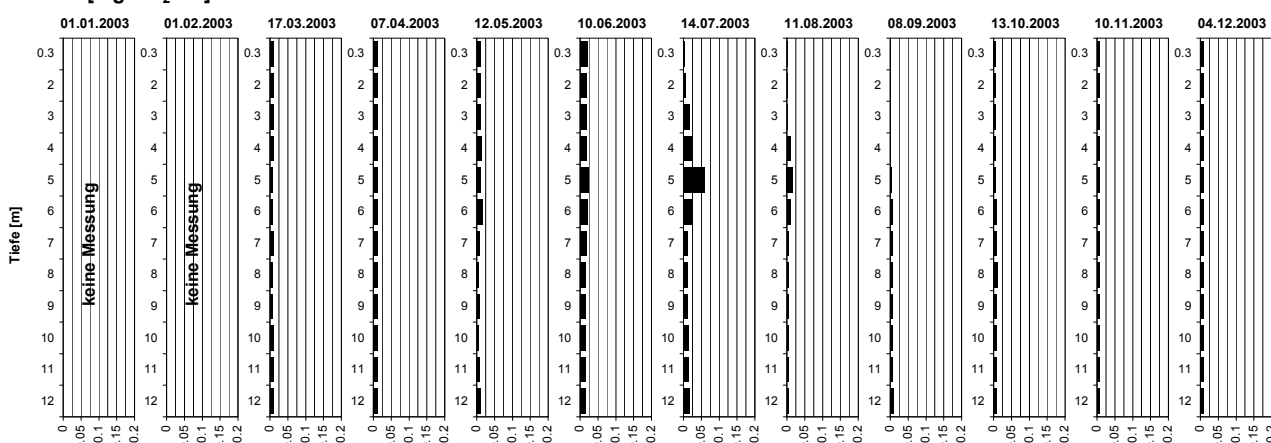
Tiefenprofile Hüttnersee 2003

Ammonium [mg NH₄-N/l]



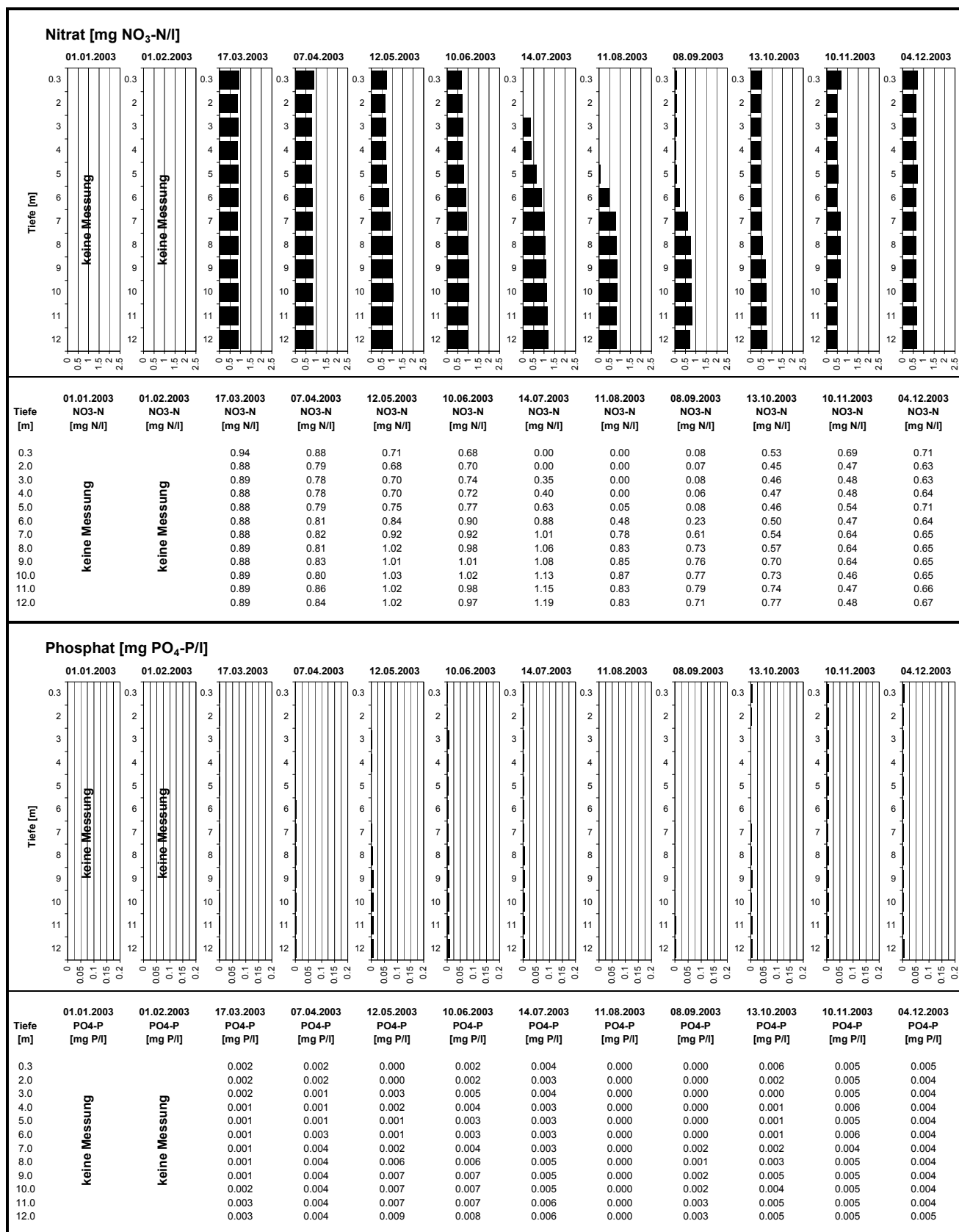
Tiefe [m]	01.01.2003 NH4-N [mg N/l]	01.02.2003 NH4-N [mg N/l]	17.03.2003 NH4-N [mg N/l]	07.04.2003 NH4-N [mg N/l]	12.05.2003 NH4-N [mg N/l]	10.06.2003 NH4-N [mg N/l]	14.07.2003 NH4-N [mg N/l]	11.08.2003 NH4-N [mg N/l]	08.09.2003 NH4-N [mg N/l]	13.10.2003 NH4-N [mg N/l]	10.11.2003 NH4-N [mg N/l]	04.12.2003 NH4-N [mg N/l]
0.3			0.02	0.05	0.08	0.04	0.05	0.01	0.02	0.02	0.02	0.04
2.0			0.01	0.04	0.07	0.05	0.04	0.01	0.01	0.01	0.02	0.03
3.0			0.02	0.04	0.09	0.08	0.09	0.01	0.02	0.01	0.02	0.03
4.0			0.02	0.04	0.06	0.06	0.14	0.02	0.01	0.01	0.02	0.02
5.0			0.04	0.05	0.03	0.05	0.12	0.02	0.02	0.02	0.02	0.03
6.0			0.01	0.07	0.03	0.04	0.06	0.05	0.01	0.02	0.02	0.03
7.0			0.02	0.08	0.02	0.03	0.06	0.02	0.04	0.03	0.02	0.03
8.0			0.02	0.08	0.01	0.04	0.06	0.02	0.04	0.04	0.02	0.03
9.0			0.02	0.09	0.02	0.04	0.05	0.02	0.06	0.02	0.02	0.03
10.0			0.05	0.09	0.02	0.04	0.07	0.01	0.05	0.03	0.02	0.03
11.0			0.08	0.09	0.02	0.04	0.05	0.02	0.08	0.03	0.02	0.03
12.0			0.05	0.11	0.03	0.05	0.06	0.02	0.08	0.02	0.02	0.03

Nitrit [mg NO₂-N/l]



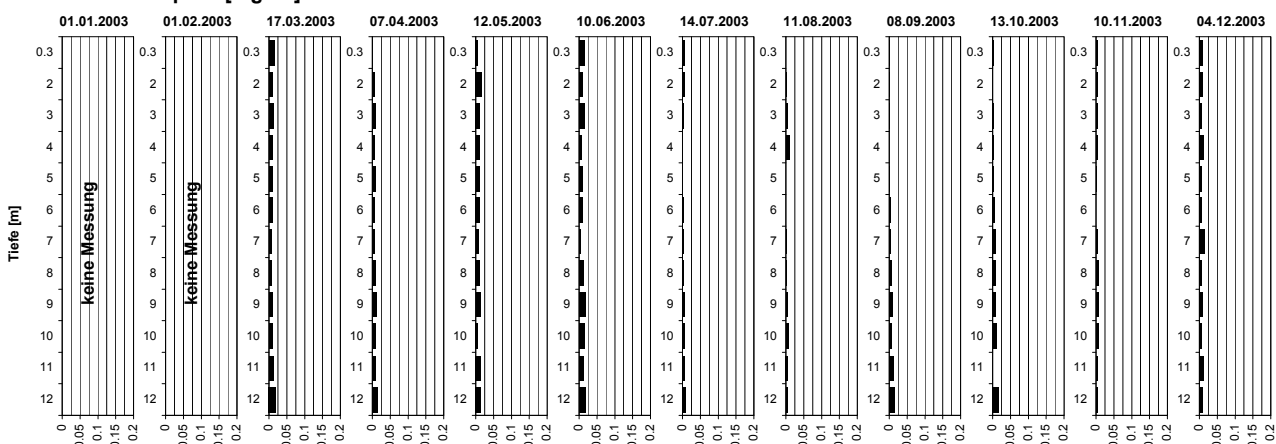
Tiefe [m]	01.01.2003 NO2-N [mg N/l]	01.02.2003 NO2-N [mg N/l]	17.03.2003 NO2-N [mg N/l]	07.04.2003 NO2-N [mg N/l]	12.05.2003 NO2-N [mg N/l]	10.06.2003 NO2-N [mg N/l]	14.07.2003 NO2-N [mg N/l]	11.08.2003 NO2-N [mg N/l]	08.09.2003 NO2-N [mg N/l]	13.10.2003 NO2-N [mg N/l]	10.11.2003 NO2-N [mg N/l]	04.12.2003 NO2-N [mg N/l]
0.3			0.008	0.012	0.010	0.019	0.004	0.001	0.001	0.006	0.007	0.010
2.0			0.008	0.012	0.010	0.018	0.005	0.001	0.001	0.006	0.007	0.010
3.0			0.008	0.011	0.011	0.017	0.017	0.001	0.001	0.006	0.006	0.010
4.0			0.009	0.011	0.013	0.018	0.023	0.009	0.001	0.006	0.006	0.010
5.0			0.007	0.011	0.012	0.024	0.058	0.016	0.003	0.006	0.007	0.010
6.0			0.007	0.013	0.015	0.020	0.025	0.009	0.006	0.008	0.006	0.010
7.0			0.008	0.013	0.008	0.016	0.012	0.004	0.007	0.008	0.007	0.010
8.0			0.007	0.013	0.005	0.014	0.012	0.004	0.007	0.010	0.006	0.010
9.0			0.007	0.013	0.007	0.014	0.013	0.003	0.007	0.008	0.006	0.010
10.0			0.008	0.013	0.004	0.014	0.014	0.003	0.007	0.009	0.007	0.010
11.0			0.009	0.012	0.009	0.014	0.015	0.004	0.007	0.009	0.007	0.010
12.0			0.009	0.012	0.011	0.014	0.016	0.004	0.008	0.008	0.007	0.010

Tiefenprofile Hüttnersee 2003



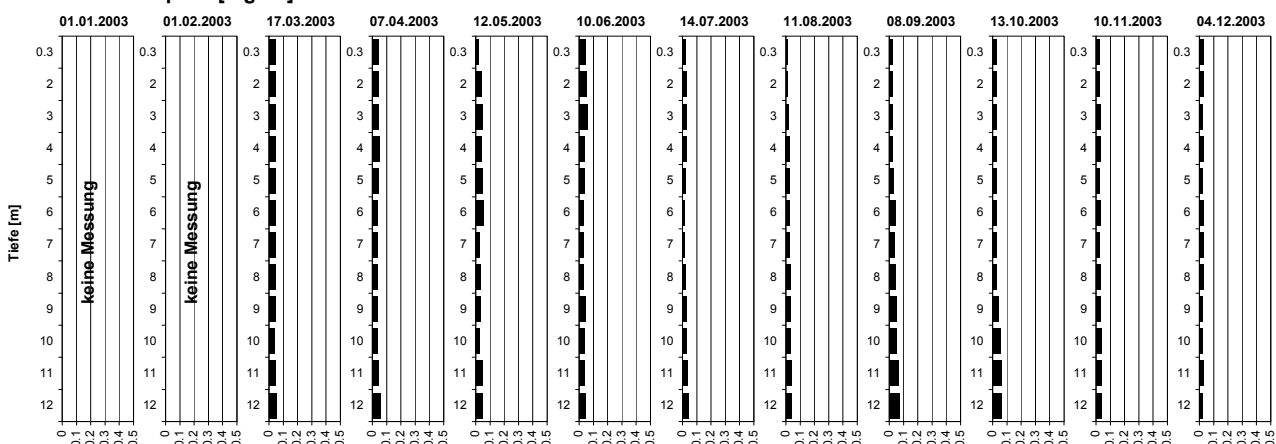
Tiefenprofile Hüttnersee 2003

Gelöster Phosphor [mg P/l]



Tiefe [m]	01.01.2003 P-gel [mg P/l]	01.02.2003 P-gel [mg P/l]	17.03.2003 P-gel [mg P/l]	07.04.2003 P-gel [mg P/l]	12.05.2003 P-gel [mg P/l]	10.06.2003 P-gel [mg P/l]	14.07.2003 P-gel [mg P/l]	11.08.2003 P-gel [mg P/l]	08.09.2003 P-gel [mg P/l]	13.10.2003 P-gel [mg P/l]	10.11.2003 P-gel [mg P/l]	04.12.2003 P-gel [mg P/l]
0.3	keine Messung	keine Messung	0.014	0.002	0.005	0.014	0.005	0.000	0.002	0.004	0.003	0.010
2.0	keine Messung	keine Messung	0.008	0.007	0.017	0.008	0.007	0.001	0.002	0.000	0.003	0.008
3.0	keine Messung	keine Messung	0.011	0.008	0.012	0.014	0.003	0.003	0.002	0.004	0.004	0.007
4.0	keine Messung	keine Messung	0.010	0.006	0.010	0.007	0.002	0.009	0.000	0.003	0.004	0.011
5.0	keine Messung	keine Messung	0.009	0.010	0.010	0.008	0.002	0.000	0.002	0.004	0.002	0.005
6.0	keine Messung	keine Messung	0.010	0.005	0.012	0.008	0.004	0.000	0.003	0.006	0.000	0.007
7.0	keine Messung	keine Messung	0.007	0.007	0.006	0.004	0.003	0.001	0.003	0.008	0.003	0.014
8.0	keine Messung	keine Messung	0.007	0.009	0.011	0.012	0.004	0.002	0.006	0.009	0.006	0.007
9.0	keine Messung	keine Messung	0.010	0.011	0.013	0.017	0.006	0.004	0.010	0.008	0.005	0.008
10.0	keine Messung	keine Messung	0.010	0.008	0.005	0.014	0.005	0.006	0.006	0.010	0.006	0.007
11.0	keine Messung	keine Messung	0.013	0.010	0.014	0.013	0.007	0.005	0.013	0.000	0.003	0.011
12.0	keine Messung	keine Messung	0.019	0.014	0.014	0.016	0.009	0.004	0.014	0.016	0.004	0.008

Gesamt-Phosphor [mg P/l]



Tiefe [m]	01.01.2003 P-tot [mg P/l]	01.02.2003 P-tot [mg P/l]	17.03.2003 P-tot [mg P/l]	07.04.2003 P-tot [mg P/l]	12.05.2003 P-tot [mg P/l]	10.06.2003 P-tot [mg P/l]	14.07.2003 P-tot [mg P/l]	11.08.2003 P-tot [mg P/l]	08.09.2003 P-tot [mg P/l]	13.10.2003 P-tot [mg P/l]	10.11.2003 P-tot [mg P/l]	04.12.2003 P-tot [mg P/l]
0.3	keine Messung	keine Messung	0.045	0.043	0.023	0.042	0.021	0.007	0.020	0.025	0.024	0.029
2.0	keine Messung	keine Messung	0.044	0.045	0.038	0.046	0.030	0.011	0.021	0.028	0.025	0.026
3.0	keine Messung	keine Messung	0.045	0.045	0.044	0.055	0.032	0.018	0.021	0.029	0.026	0.024
4.0	keine Messung	keine Messung	0.042	0.049	0.037	0.034	0.029	0.028	0.020	0.028	0.028	0.028
5.0	keine Messung	keine Messung	0.042	0.041	0.048	0.033	0.024	0.026	0.028	0.024	0.025	0.023
6.0	keine Messung	keine Messung	0.041	0.038	0.051	0.027	0.019	0.022	0.044	0.025	0.026	0.029
7.0	keine Messung	keine Messung	0.040	0.033	0.030	0.029	0.017	0.024	0.034	0.026	0.025	0.031
8.0	keine Messung	keine Messung	0.041	0.035	0.032	0.032	0.024	0.029	0.041	0.028	0.027	0.027
9.0	keine Messung	keine Messung	0.040	0.037	0.035	0.042	0.030	0.029	0.049	0.042	0.029	0.025
10.0	keine Messung	keine Messung	0.038	0.037	0.029	0.039	0.028	0.031	0.047	0.056	0.036	0.025
11.0	keine Messung	keine Messung	0.041	0.041	0.044	0.038	0.039	0.035	0.067	0.065	0.033	0.027
12.0	keine Messung	keine Messung	0.049	0.053	0.047	0.041	0.043	0.036	0.071	0.063	0.034	0.025