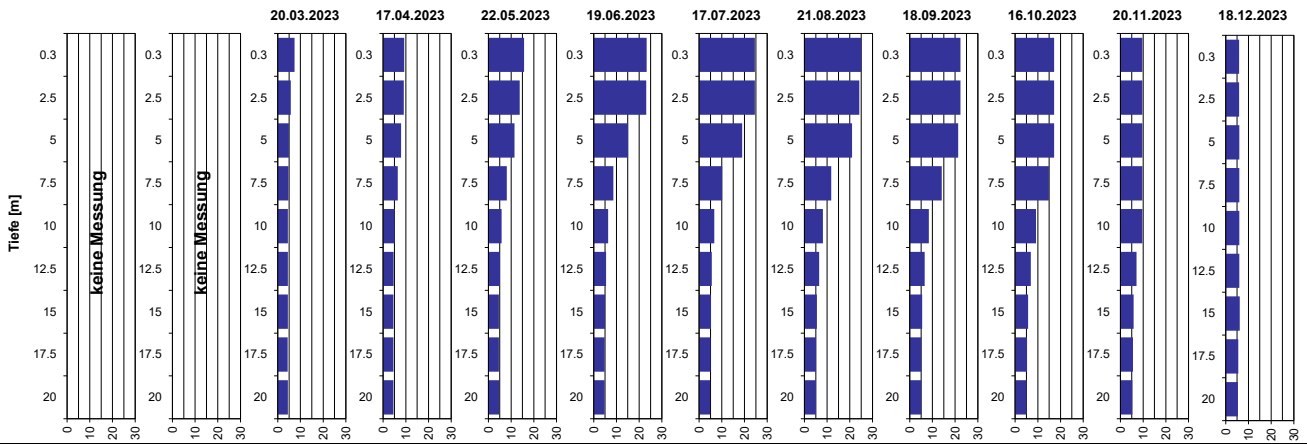


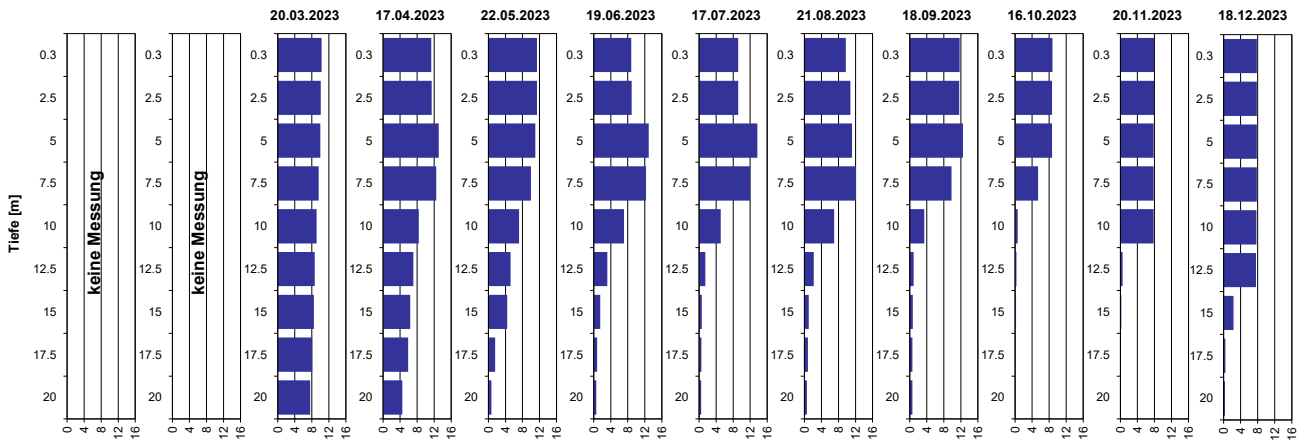
Tiefenprofile Türlerseersee 2023

Temperatur [°C]



Tiefe [m]	20.03.2023	17.04.2023	22.05.2023	19.06.2023	17.07.2023	21.08.2023	18.09.2023	16.10.2023	20.11.2023	18.12.2023
	Temp [°C]	Temp [°C]	Temp [°C]	Temp [°C]	Temp [°C]	Temp [°C]	Temp [°C]	Temp [°C]	Temp [°C]	Temp [°C]
0.3	7.4	9.3	15.7	23.3	24.6	25.1	22.3	17.2	9.7	5.9
2.5	5.7	9.1	13.8	23.1	24.6	24.2	22.3	17.2	9.7	5.9
5.0	4.9	7.9	11.5	15.1	19.0	21.0	21.3	17.2	9.7	6.0
7.5	4.7	6.5	8.1	8.6	10.2	11.8	14.1	14.9	9.7	6.0
10.0	4.5	5.1	5.8	6.3	6.7	8.1	8.4	9.2	9.7	6.0
12.5	4.5	4.6	5.1	5.4	5.6	6.5	6.6	6.9	7.1	6.0
15.0	4.5	4.5	4.6	5.0	5.2	5.5	5.5	5.7	5.8	6.2
17.5	4.4	4.5	4.6	4.8	5.0	5.1	5.1	5.3	5.5	5.5
20.0	4.5	4.5	4.7	4.8	4.9	5.0	5.1	5.1	5.3	5.3

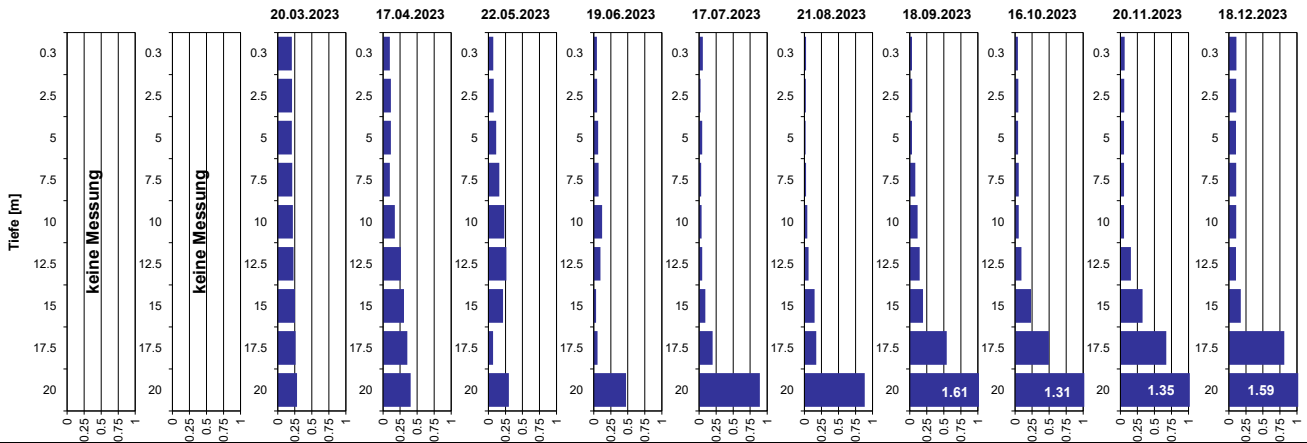
Sauerstoff [mg O₂/l]



Tiefe [m]	20.03.2023	17.04.2023	22.05.2023	19.06.2023	17.07.2023	21.08.2023	18.09.2023	16.10.2023	20.11.2023	18.12.2023
	O ₂ [mg O ₂ /l]	O ₂ [mg O ₂ /l]	O ₂ [mg O ₂ /l]	O ₂ [mg O ₂ /l]	O ₂ [mg O ₂ /l]	O ₂ [mg O ₂ /l]	O ₂ [mg O ₂ /l]	O ₂ [mg O ₂ /l]	O ₂ [mg O ₂ /l]	O ₂ [mg O ₂ /l]
0.3	10.3	11.3	11.4	8.8	9.2	9.7	11.7	8.8	7.9	7.8
2.5	10.1	11.4	11.4	8.9	9.2	10.8	11.6	8.7	7.9	7.8
5.0	10.0	13.1	11.0	12.9	13.7	11.2	12.5	8.7	7.8	7.8
7.5	9.6	12.5	10.0	12.3	12.0	12.1	9.8	5.4	7.8	7.8
10.0	9.1	8.4	7.2	7.1	5.1	7.0	3.4	0.6	7.8	7.7
12.5	8.7	7.1	5.2	3.2	1.5	2.2	0.9	0.3	0.5	7.6
15.0	8.5	6.4	4.4	1.5	0.6	1.0	0.7	0.2	0.2	2.3
17.5	8.1	5.9	1.6	0.8	0.5	0.8	0.6	0.1	0.1	0.4
20.0	7.6	4.5	0.7	0.6	0.5	0.6	0.6	0.1	0.1	0.3

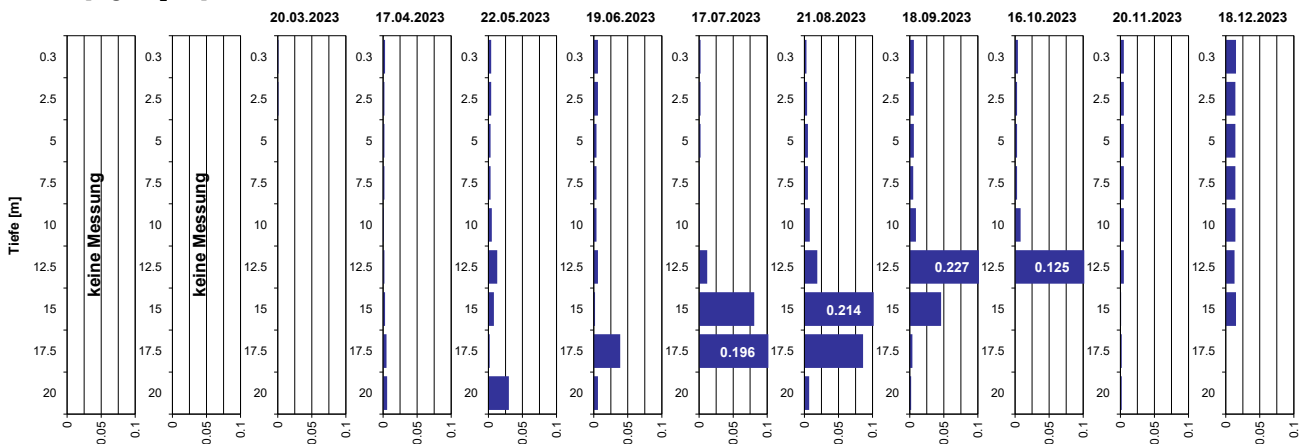
Tiefenprofile Türlersee 2023

Ammonium [mg NH₄-N/l]



Tiefe [m]	20.03.2023 NH4-N [mg N/l]	17.04.2023 NH4-N [mg N/l]	22.05.2023 NH4-N [mg N/l]	19.06.2023 NH4-N [mg N/l]	17.07.2023 NH4-N [mg N/l]	21.08.2023 NH4-N [mg N/l]	18.09.2023 NH4-N [mg N/l]	16.10.2023 NH4-N [mg N/l]	20.11.2023 NH4-N [mg N/l]	18.12.2023 NH4-N [mg N/l]
0.3	keine Messung	0.21	0.10	0.07	0.05	0.02	0.03	0.04	0.06	0.11
2.5	keine Messung	0.21	0.11	0.08	0.05	0.02	0.04	0.05	0.06	0.11
5.0	keine Messung	0.21	0.11	0.11	0.07	0.02	0.03	0.04	0.05	0.11
7.5	keine Messung	0.21	0.10	0.16	0.07	0.03	0.08	0.06	0.05	0.11
10.0	keine Messung	0.22	0.17	0.23	0.12	0.04	0.12	0.06	0.05	0.11
12.5	keine Messung	0.23	0.26	0.26	0.10	0.05	0.15	0.09	0.15	0.10
15.0	keine Messung	0.25	0.31	0.22	0.03	0.09	0.20	0.23	0.33	0.17
17.5	keine Messung	0.26	0.36	0.07	0.06	0.20	0.54	0.50	0.67	0.81
20.0	keine Messung	0.28	0.41	0.30	0.47	0.89	1.61	1.31	1.35	1.59

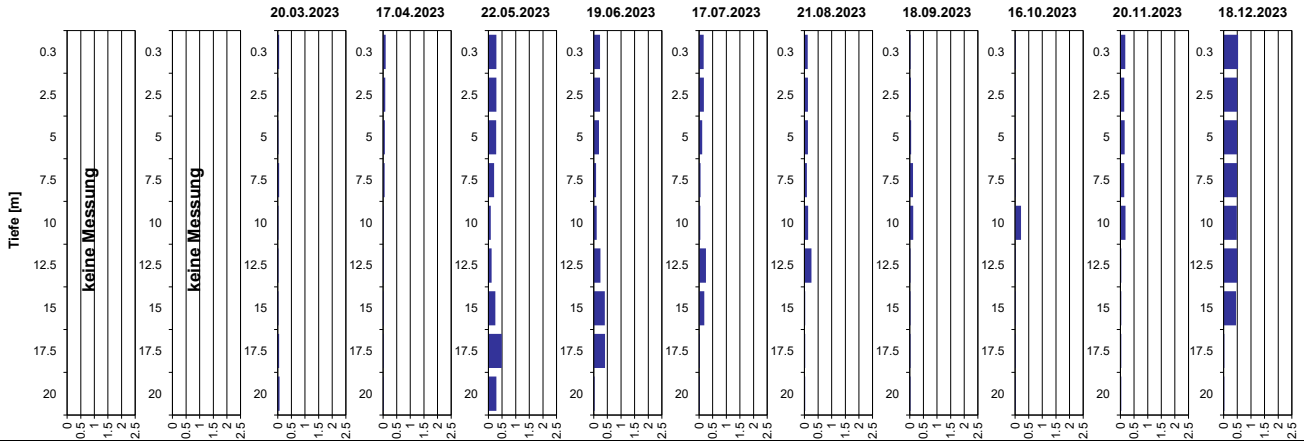
Nitrit [mg NO₂-N/l]



Tiefe [m]	20.03.2023 NO2-N [mg N/l]	17.04.2023 NO2-N [mg N/l]	22.05.2023 NO2-N [mg N/l]	19.06.2023 NO2-N [mg N/l]	17.07.2023 NO2-N [mg N/l]	21.08.2023 NO2-N [mg N/l]	18.09.2023 NO2-N [mg N/l]	16.10.2023 NO2-N [mg N/l]	20.11.2023 NO2-N [mg N/l]	18.12.2023 NO2-N [mg N/l]
0.3	keine Messung	0.001	0.003	0.004	0.006	0.003	0.006	0.004	0.005	0.015
2.5	keine Messung	0.001	0.002	0.004	0.006	0.002	0.006	0.003	0.005	0.014
5.0	keine Messung	0.000	0.002	0.003	0.004	0.002	0.006	0.003	0.005	0.014
7.5	keine Messung	0.000	0.002	0.003	0.004	0.001	0.005	0.003	0.005	0.014
10.0	keine Messung	0.000	0.001	0.005	0.004	0.001	0.008	0.008	0.005	0.014
12.5	keine Messung	0.000	0.002	0.013	0.006	0.012	0.227	0.125	0.005	0.013
15.0	keine Messung	0.000	0.003	0.008	0.002	0.081	0.046	0.000	0.001	0.015
17.5	keine Messung	0.000	0.005	0.002	0.039	0.196	0.004	0.000	0.002	0.000
20.0	keine Messung	0.000	0.006	0.030	0.006	0.000	0.002	0.000	0.002	0.000

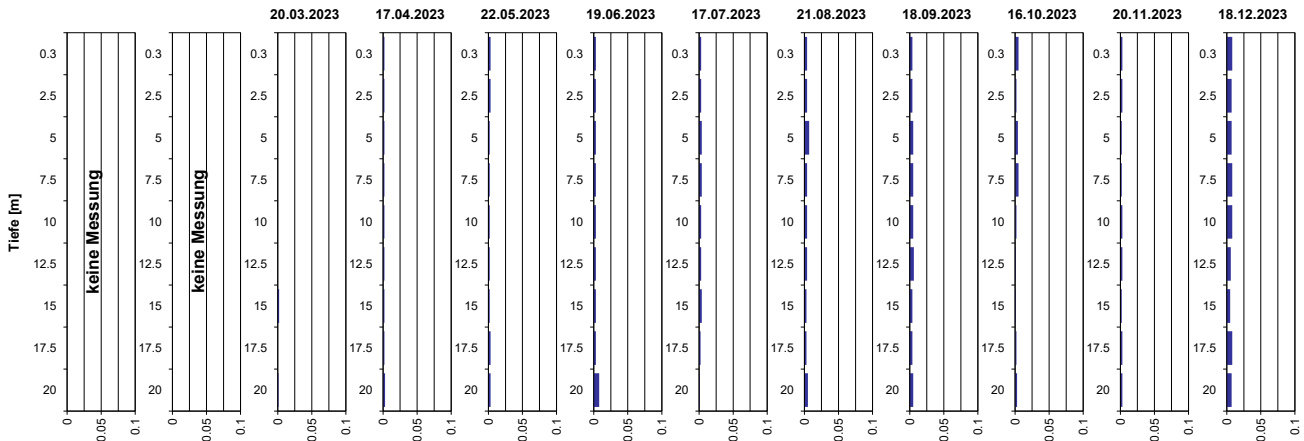
Tiefenprofile Türlersee 2023

Nitrat [mg NO₃-N/l]



Tiefe [m]		20.03.2023 NO3-N [mg N/l]	17.04.2023 NO3-N [mg N/l]	22.05.2023 NO3-N [mg N/l]	19.06.2023 NO3-N [mg N/l]	17.07.2023 NO3-N [mg N/l]	21.08.2023 NO3-N [mg N/l]	18.09.2023 NO3-N [mg N/l]	16.10.2023 NO3-N [mg N/l]	20.11.2023 NO3-N [mg N/l]	18.12.2023 NO3-N [mg N/l]
0.3		0.05	0.10	0.29	0.23	0.17	0.12	0.03	0.03	0.18	0.53
2.5		0.03	0.08	0.29	0.23	0.18	0.13	0.04	0.03	0.14	0.50
5.0		0.03	0.07	0.29	0.19	0.11	0.13	0.05	0.03	0.15	0.49
7.5		0.05	0.06	0.21	0.09	0.06	0.09	0.12	0.03	0.14	0.49
10.0		0.03	0.03	0.08	0.11	0.05	0.14	0.13	0.22	0.19	0.48
12.5		0.03	0.03	0.12	0.24	0.25	0.26	0.03	0.03	0.03	0.50
15.0		0.03	0.03	0.25	0.41	0.19	0.03	0.03	0.03	0.03	0.46
17.5		0.05	0.03	0.49	0.41	0.03	0.03	0.03	0.03	0.03	0.03
20.0		0.06	0.03	0.29	0.03	0.03	0.03	0.03	0.03	0.03	0.03

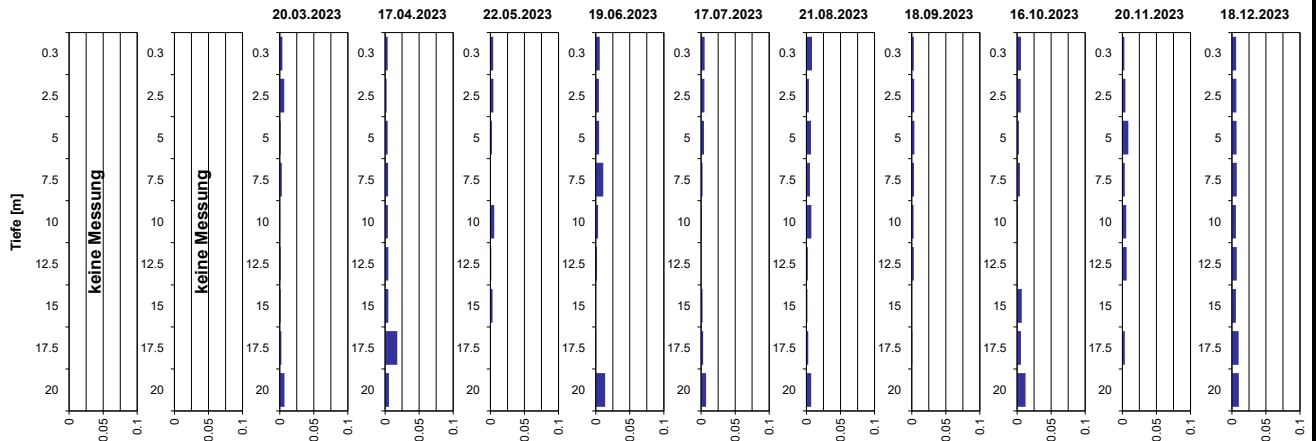
Phosphat [mg PO₄-P/l]



Tiefe [m]		20.03.2023 PO4-P [mg P/l]	17.04.2023 PO4-P [mg P/l]	22.05.2023 PO4-P [mg P/l]	19.06.2023 PO4-P [mg P/l]	17.07.2023 PO4-P [mg P/l]	21.08.2023 PO4-P [mg P/l]	18.09.2023 PO4-P [mg P/l]	16.10.2023 PO4-P [mg P/l]	20.11.2023 PO4-P [mg P/l]	18.12.2023 PO4-P [mg P/l]
0.3		0.000	0.002	0.003	0.003	0.003	0.004	0.004	0.005	0.003	0.008
2.5		0.000	0.002	0.003	0.003	0.003	0.004	0.004	0.002	0.003	0.007
5.0		0.000	0.002	0.002	0.003	0.004	0.007	0.005	0.004	0.002	0.007
7.5		0.000	0.002	0.002	0.003	0.004	0.004	0.005	0.005	0.002	0.008
10.0		0.000	0.002	0.002	0.003	0.003	0.004	0.005	0.002	0.003	0.008
12.5		0.000	0.002	0.002	0.003	0.003	0.004	0.006	0.001	0.003	0.006
15.0		0.002	0.002	0.002	0.003	0.004	0.003	0.004	0.001	0.002	0.005
17.5		0.000	0.002	0.003	0.003	0.002	0.003	0.004	0.002	0.003	0.008
20.0		0.001	0.003	0.003	0.008	0.001	0.005	0.005	0.003	0.003	0.007

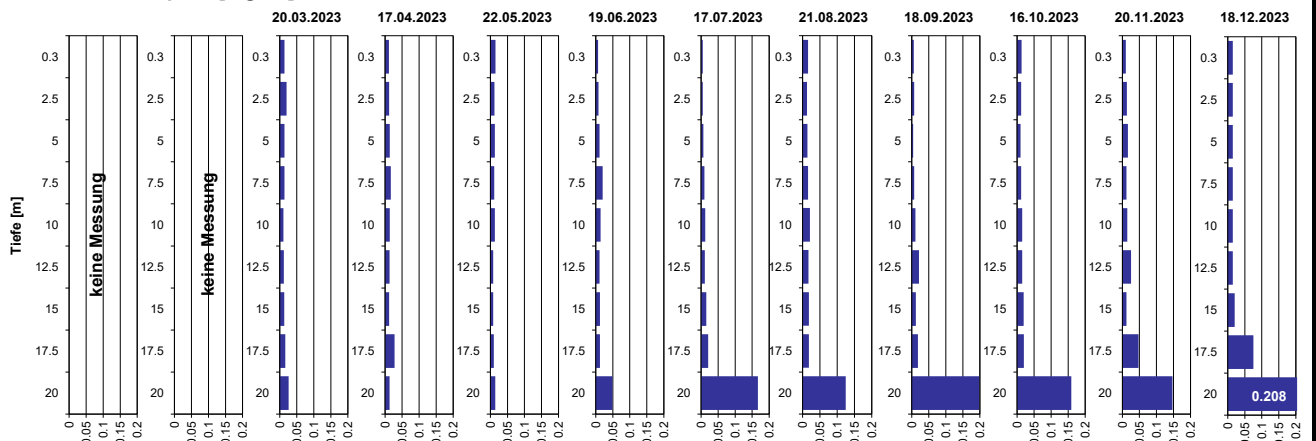
Tiefenprofile Türlersee 2023

Gelöster Phosphor [mg P/l]



Tiefe [m]		20.03.2023 P-gel [mg P/l]	17.04.2023 P-gel [mg P/l]	22.05.2023 P-gel [mg P/l]	19.06.2023 P-gel [mg P/l]	17.07.2023 P-gel [mg P/l]	21.08.2023 P-gel [mg P/l]	18.09.2023 P-gel [mg P/l]	16.10.2023 P-gel [mg P/l]	20.11.2023 P-gel [mg P/l]	18.12.2023 P-gel [mg P/l]
0.3	keine Messung	0.004	0.004	0.004	0.006	0.005	0.008	0.003	0.006	0.003	0.006
2.5		0.007	0.002	0.004	0.005	0.005	0.004	0.004	0.006	0.005	0.007
5.0	keine Messung	0.002	0.004	0.002	0.005	0.004	0.007	0.004	0.003	0.009	0.007
7.5		0.003	0.005	0.000	0.011	0.002	0.005	0.003	0.004	0.004	0.007
10.0		0.001	0.004	0.006	0.004	0.001	0.007	0.003	0.002	0.006	0.006
12.5		0.001	0.005	0.001	0.002	0.000	0.002	0.003	0.000	0.006	0.007
15.0		0.002	0.005	0.003	0.000	0.002	0.002	0.000	0.007	0.000	0.006
17.5		0.002	0.018	0.000	0.001	0.003	0.003	0.001	0.006	0.004	0.010
20.0		0.007	0.006	0.001	0.014	0.007	0.007	0.000	0.013	0.000	0.010

Gesamt-Phosphor [mg P/l]



Tiefe [m]		20.03.2023 P-tot [mg P/l]	17.04.2023 P-tot [mg P/l]	22.05.2023 P-tot [mg P/l]	19.06.2023 P-tot [mg P/l]	17.07.2023 P-tot [mg P/l]	21.08.2023 P-tot [mg P/l]	18.09.2023 P-tot [mg P/l]	16.10.2023 P-tot [mg P/l]	20.11.2023 P-tot [mg P/l]	18.12.2023 P-tot [mg P/l]
0.3	keine Messung	0.014	0.011	0.015	0.007	0.005	0.016	0.006	0.013	0.010	0.015
2.5		0.020	0.012	0.012	0.008	0.005	0.013	0.007	0.012	0.013	0.015
5.0	keine Messung	0.014	0.014	0.013	0.011	0.007	0.014	0.004	0.010	0.016	0.015
7.5		0.014	0.017	0.011	0.020	0.010	0.016	0.007	0.012	0.012	0.015
10.0		0.011	0.014	0.013	0.014	0.012	0.021	0.011	0.015	0.014	0.015
12.5		0.012	0.013	0.008	0.011	0.011	0.017	0.021	0.015	0.025	0.015
15.0		0.013	0.012	0.008	0.012	0.015	0.018	0.012	0.019	0.012	0.020
17.5		0.016	0.028	0.010	0.012	0.021	0.018	0.018	0.020	0.047	0.075
20.0		0.026	0.013	0.014	0.049	0.167	0.125	0.198	0.159	0.147	0.208