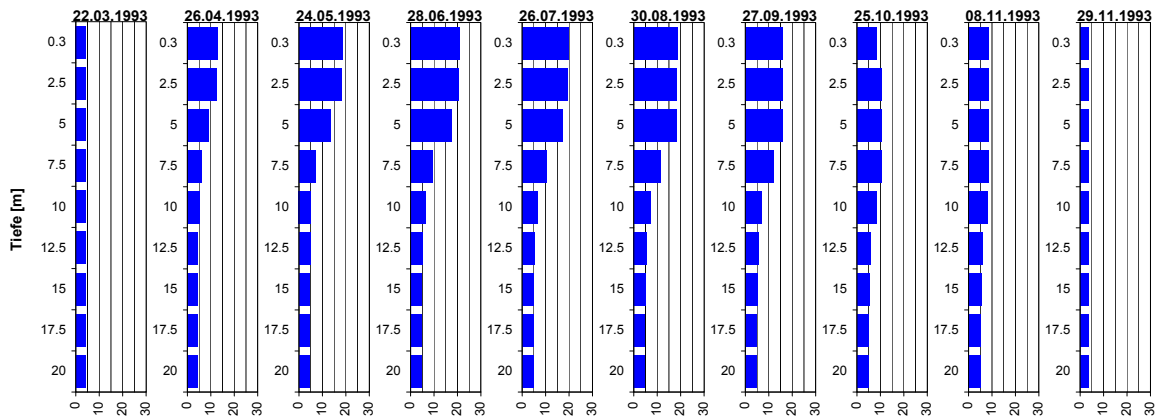
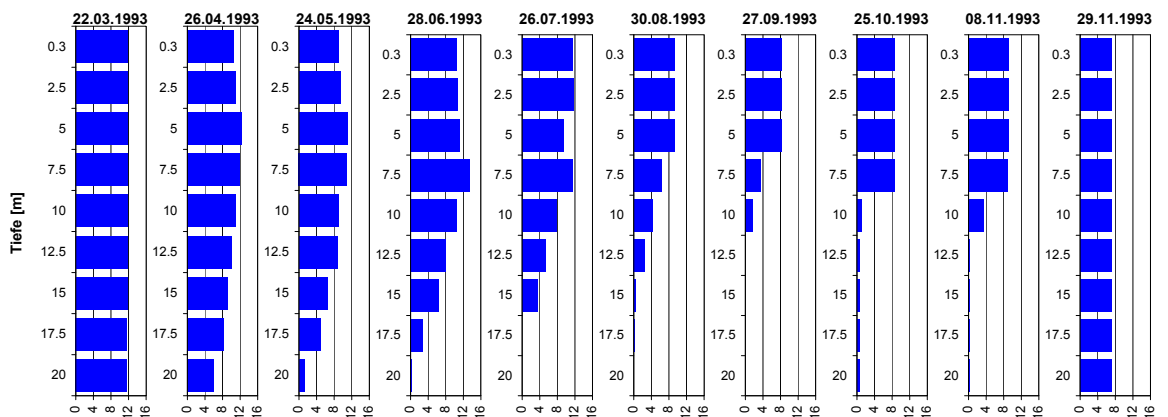


Temperatur



Tiefe [m]	22.03.1993 Temp [°C]	26.04.1993 Temp [°C]	24.05.1993 Temp [°C]	28.06.1993 Temp [°C]	26.07.1993 Temp [°C]	30.08.1993 Temp [°C]	27.09.1993 Temp [°C]	25.10.1993 Temp [°C]	08.11.1993 Temp [°C]	29.11.1993 Temp [°C]
0.3	4.3	12.9	18.7	20.8	19.7	18.5	16.1	8.4	8.8	3.6
2.5	4.3	12.5	17.9	20.5	19.5	18.3	16.1	10.4	8.8	3.6
5.0	4.3	9.0	13.6	17.6	17.4	18.2	16.0	10.4	8.8	3.6
7.5	4.3	6.3	6.9	9.3	10.4	11.3	12.0	10.4	8.8	3.6
10.0	4.2	5.3	5.1	6.4	6.4	7.1	7.1	8.3	8.1	3.6
12.5	4.2	4.5	4.7	5.4	5.4	5.6	5.6	5.8	5.9	3.6
15.0	4.2	4.4	4.6	5.0	5.0	5.2	5.1	5.3	5.5	3.6
17.5	4.1	4.4	4.5	4.9	4.9	4.8	4.9	5.0	5.2	3.6
20.0	4.1	4.4	4.6	4.8	4.9	4.7	4.8	4.9	5.2	3.6

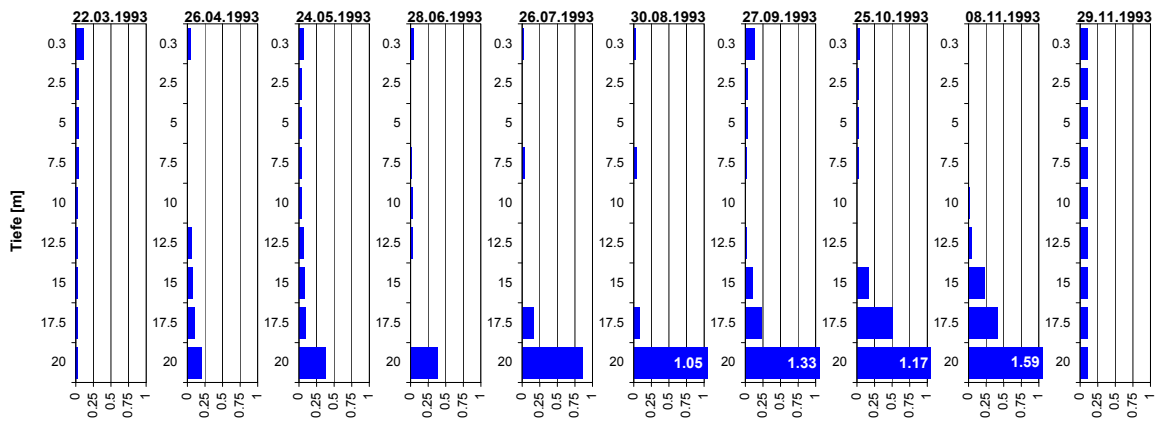
Sauerstoff (O₂)



Tiefe [m]	22.03.1993 O ₂ [mg O ₂ /l]	26.04.1993 O ₂ [mg O ₂ /l]	24.05.1993 O ₂ [mg O ₂ /l]	28.06.1993 O ₂ [mg O ₂ /l]	26.07.1993 O ₂ [mg O ₂ /l]	30.08.1993 O ₂ [mg O ₂ /l]	27.09.1993 O ₂ [mg O ₂ /l]	25.10.1993 O ₂ [mg O ₂ /l]	08.11.1993 O ₂ [mg O ₂ /l]	29.11.1993 O ₂ [mg O ₂ /l]
0.3	11.7	10.6	8.9	10.5	11.5	9.2	8.2	8.6	9.2	7.1
2.5	11.8	10.9	9.5	10.7	11.6	9.3	8.2	8.5	9.2	7.2
5.0	11.7	12.4	11.1	11.3	9.5	9.3	8.2	8.5	9.2	7.2
7.5	11.7	11.9	10.9	13.4	11.5	6.4	3.5	8.5	9.0	7.2
10.0	11.7	10.9	8.9	10.6	7.8	4.3	1.6	1.1	3.5	7.2
12.5	11.7	10.0	8.7	8.0	5.3	2.5	0.0	0.5	0.4	7.2
15.0	11.7	9.1	6.5	6.4	3.4	0.4	0.0	0.5	0.4	7.2
17.5	11.6	8.2	4.8	2.7	0.0	0.1	0.0	0.5	0.4	7.2
20.0	11.6	5.9	1.3	0.3	0.0	0.0	0.0	0.5	0.4	7.2

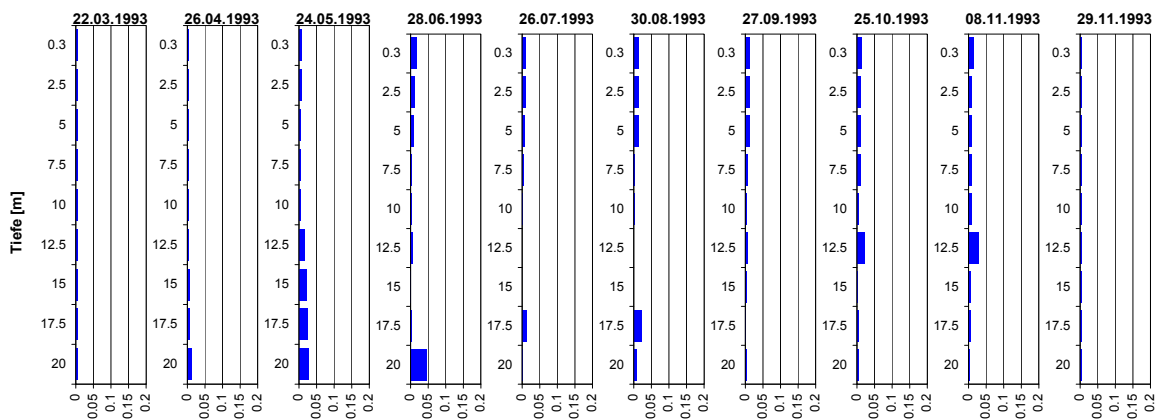
Türlersee Tiefenprofile 1993

Ammonium (NH₄)



Tiefe [m]	22.03.1993 NH4-N [mg N/l]	26.04.1993 NH4-N [mg N/l]	24.05.1993 NH4-N [mg N/l]	28.06.1993 NH4-N [mg N/l]	26.07.1993 NH4-N [mg N/l]	30.08.1993 NH4-N [mg N/l]	27.09.1993 NH4-N [mg N/l]	25.10.1993 NH4-N [mg N/l]	08.11.1993 NH4-N [mg N/l]	29.11.1993 NH4-N [mg N/l]
0.3	0.11	0.05	0.06	0.05	0.02	0.02	0.13	0.04	0.00	0.11
2.5	0.04	0.00	0.03	0.00	0.00	0.00	0.03	0.02	0.00	0.10
5.0	0.04	0.00	0.03	0.00	0.00	0.00	0.03	0.02	0.00	0.10
7.5	0.04	0.00	0.03	0.02	0.04	0.04	0.02	0.02	0.00	0.10
10.0	0.03	0.00	0.04	0.03	0.00	0.00	0.00	0.00	0.02	0.10
12.5	0.03	0.06	0.07	0.03	0.00	0.00	0.02	0.00	0.05	0.10
15.0	0.03	0.08	0.08	0.00	0.00	0.00	0.11	0.16	0.23	0.10
17.5	0.03	0.10	0.09	0.00	0.16	0.09	0.23	0.51	0.42	0.10
20.0	0.03	0.21	0.37	0.39	0.86	1.05	1.33	1.17	1.59	0.10

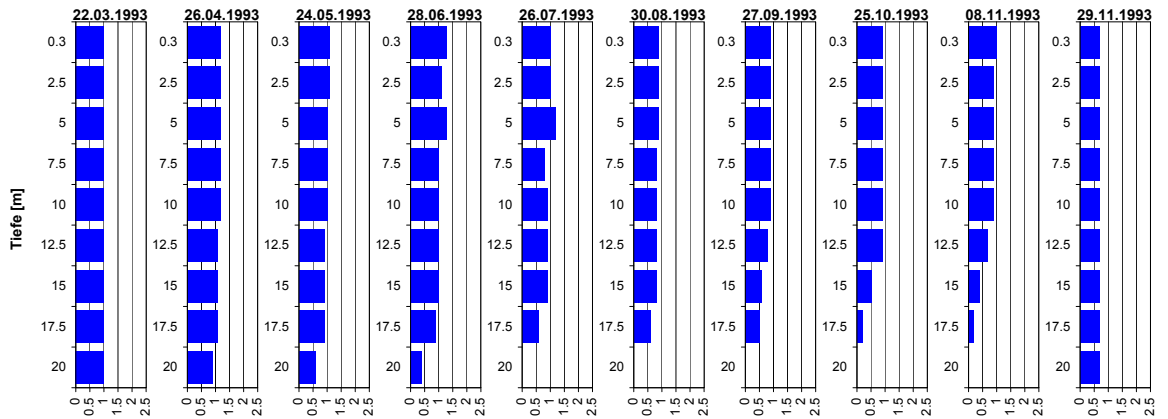
Nitrit (NO₂)



Tiefe [m]	22.03.1993 NO2-N [mg N/l]	26.04.1993 NO2-N [mg N/l]	24.05.1993 NO2-N [mg N/l]	28.06.1993 NO2-N [mg N/l]	26.07.1993 NO2-N [mg N/l]	30.08.1993 NO2-N [mg N/l]	27.09.1993 NO2-N [mg N/l]	25.10.1993 NO2-N [mg N/l]	08.11.1993 NO2-N [mg N/l]	29.11.1993 NO2-N [mg N/l]
0.3	0.004	0.005	0.008	0.019	0.010	0.013	0.012	0.013	0.016	0.004
2.5	0.004	0.005	0.008	0.011	0.010	0.014	0.012	0.009	0.010	0.004
5.0	0.004	0.004	0.004	0.008	0.008	0.014	0.012	0.009	0.010	0.004
7.5	0.004	0.004	0.004	0.004	0.005	0.003	0.006	0.009	0.010	0.004
10.0	0.004	0.004	0.005	0.005	0.002	0.002	0.003	0.004	0.010	0.004
12.5	0.004	0.004	0.016	0.007	0.000	0.000	0.007	0.022	0.028	0.004
15.0	0.004	0.006	0.022	0.002	0.000	0.000	0.003	0.002	0.006	0.004
17.5	0.004	0.008	0.024	0.003	0.014	0.022	0.002	0.005	0.006	0.004
20.0	0.004	0.013	0.027	0.045	0.002	0.007	0.004	0.003	0.003	0.004

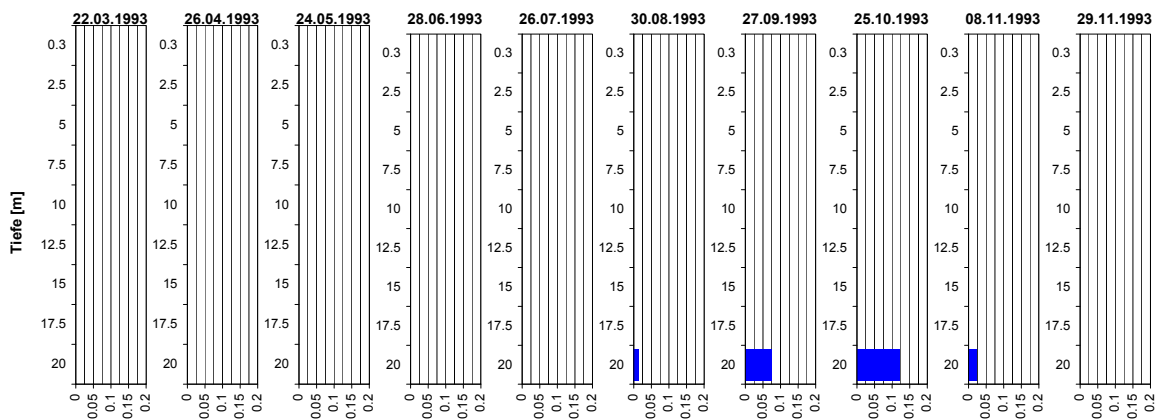
Türlersee Tiefenprofile 1993

Nitrat (NO₃)



Tiefe [m]	22.03.1993 NO3-N [mg N/l]	26.04.1993 NO3-N [mg N/l]	24.05.1993 NO3-N [mg N/l]	28.06.1993 NO3-N [mg N/l]	26.07.1993 NO3-N [mg N/l]	30.08.1993 NO3-N [mg N/l]	27.09.1993 NO3-N [mg N/l]	25.10.1993 NO3-N [mg N/l]	08.11.1993 NO3-N [mg N/l]	29.11.1993 NO3-N [mg N/l]
0.3	1.0	1.2	1.1	1.3	1.0	0.9	0.9	0.9	1.0	0.7
2.5	1.0	1.2	1.1	1.1	1.0	0.9	0.9	0.9	0.9	0.7
5.0	1.0	1.2	1.0	1.3	1.2	0.9	0.9	0.9	0.9	0.7
7.5	1.0	1.2	1.0	1.0	0.8	0.8	0.9	0.9	0.9	0.7
10.0	1.0	1.2	1.0	1.0	0.9	0.8	0.9	0.9	0.9	0.7
12.5	1.0	1.1	0.9	1.0	0.9	0.8	0.8	0.9	0.7	0.7
15.0	1.0	1.1	0.9	1.0	0.9	0.8	0.6	0.5	0.4	0.7
17.5	1.0	1.1	0.9	0.9	0.6	0.6	0.5	0.2	0.2	0.7
20.0	1.0	0.9	0.6	0.4	0.0	0.0	0.0	0.0	0.0	0.7

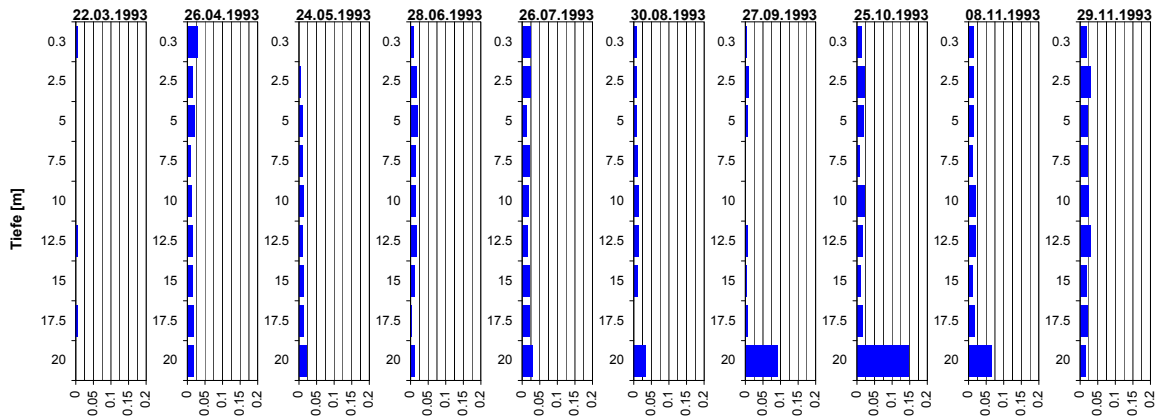
Phosphat (PO₄)



Tiefe [m]	22.03.1993 PO4-P [mg P/l]	26.04.1993 PO4-P [mg P/l]	24.05.1993 PO4-P [mg P/l]	28.06.1993 PO4-P [mg P/l]	26.07.1993 PO4-P [mg P/l]	30.08.1993 PO4-P [mg P/l]	27.09.1993 PO4-P [mg P/l]	25.10.1993 PO4-P [mg P/l]	08.11.1993 PO4-P [mg P/l]	29.11.1993 PO4-P [mg P/l]
0.3	0.000	0.000	0.000	0.000	0.000	0.000	0.000	0.000	0.000	0.000
2.5	0.000	0.000	0.000	0.000	0.000	0.000	0.000	0.000	0.000	0.000
5.0	0.000	0.000	0.000	0.000	0.000	0.000	0.000	0.000	0.000	0.000
7.5	0.000	0.000	0.000	0.000	0.000	0.000	0.000	0.000	0.000	0.000
10.0	0.000	0.000	0.000	0.000	0.000	0.000	0.000	0.000	0.000	0.000
12.5	0.000	0.000	0.000	0.000	0.000	0.000	0.000	0.000	0.000	0.000
15.0	0.000	0.000	0.000	0.000	0.000	0.000	0.000	0.000	0.000	0.000
17.5	0.000	0.000	0.000	0.000	0.000	0.000	0.000	0.000	0.000	0.000
20.0	0.000	0.000	0.000	0.000	0.000	0.015	0.075	0.120	0.025	0.000

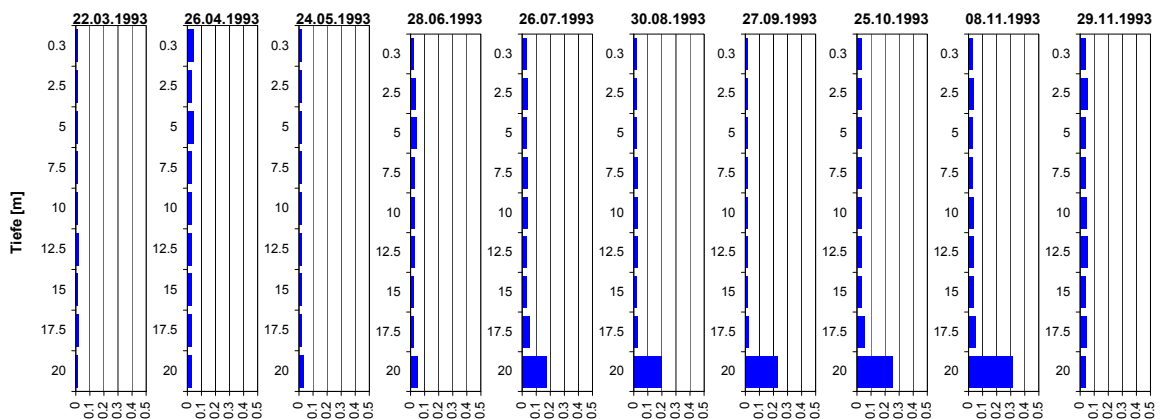
Türlerseer Tiefenprofile 1993

Gelöster Phosphor (P_{gel})



Tiefe [m]	22.03.1993 P-gel [mg P/l]	26.04.1993 P-gel [mg P/l]	24.05.1993 P-gel [mg P/l]	28.06.1993 P-gel [mg P/l]	26.07.1993 P-gel [mg P/l]	30.08.1993 P-gel [mg P/l]	27.09.1993 P-gel [mg P/l]	25.10.1993 P-gel [mg P/l]	08.11.1993 P-gel [mg P/l]	29.11.1993 P-gel [mg P/l]
0.3	0.005	0.031	0.000	0.009	0.025	0.009	0.005	0.014	0.015	0.019
2.5	0.000	0.015	0.005	0.018	0.025	0.009	0.009	0.020	0.015	0.029
5.0	0.000	0.021	0.009	0.022	0.012	0.008	0.008	0.018	0.014	0.020
7.5	0.000	0.010	0.011	0.014	0.020	0.012	0.000	0.008	0.013	0.022
10.0	0.000	0.014	0.013	0.016	0.017	0.014	0.000	0.021	0.020	0.024
12.5	0.005	0.015	0.009	0.018	0.015	0.015	0.006	0.016	0.021	0.029
15.0	0.000	0.016	0.013	0.011	0.021	0.011	0.005	0.010	0.011	0.019
17.5	0.006	0.017	0.013	0.005	0.021	0.000	0.008	0.015	0.019	0.021
20.0	0.000	0.019	0.020	0.013	0.029	0.035	0.092	0.146	0.065	0.016

Gesamt-Phosphor (P_{tot})



Tiefe [m]	22.03.1993 P-tot [mg P/l]	26.04.1993 P-tot [mg P/l]	24.05.1993 P-tot [mg P/l]	28.06.1993 P-tot [mg P/l]	26.07.1993 P-tot [mg P/l]	30.08.1993 P-tot [mg P/l]	27.09.1993 P-tot [mg P/l]	25.10.1993 P-tot [mg P/l]	08.11.1993 P-tot [mg P/l]	29.11.1993 P-tot [mg P/l]
0.3	0.015	0.045	0.015	0.025	0.035	0.020	0.015	0.030	0.030	0.040
2.5	0.015	0.030	0.015	0.035	0.040	0.020	0.020	0.035	0.035	0.050
5.0	0.015	0.045	0.020	0.045	0.035	0.020	0.020	0.035	0.030	0.040
7.5	0.015	0.035	0.020	0.030	0.040	0.025	0.015	0.030	0.030	0.040
10.0	0.015	0.030	0.020	0.030	0.040	0.025	0.015	0.035	0.035	0.045
12.5	0.020	0.030	0.020	0.030	0.035	0.025	0.020	0.030	0.035	0.050
15.0	0.015	0.030	0.020	0.025	0.030	0.020	0.020	0.030	0.035	0.040
17.5	0.020	0.030	0.020	0.025	0.050	0.025	0.025	0.055	0.050	0.045
20.0	0.015	0.035	0.030	0.055	0.175	0.195	0.230	0.250	0.315	0.040