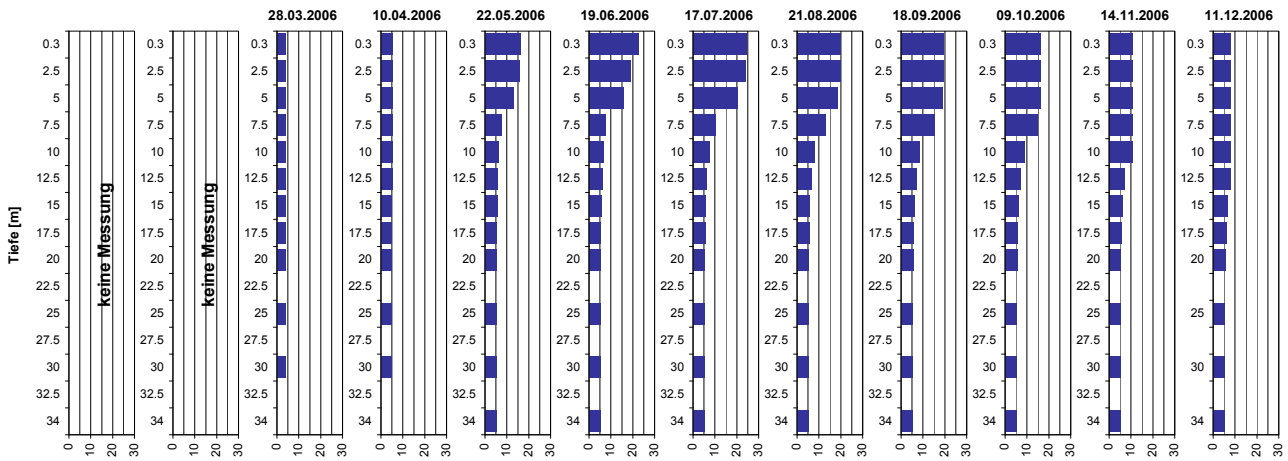


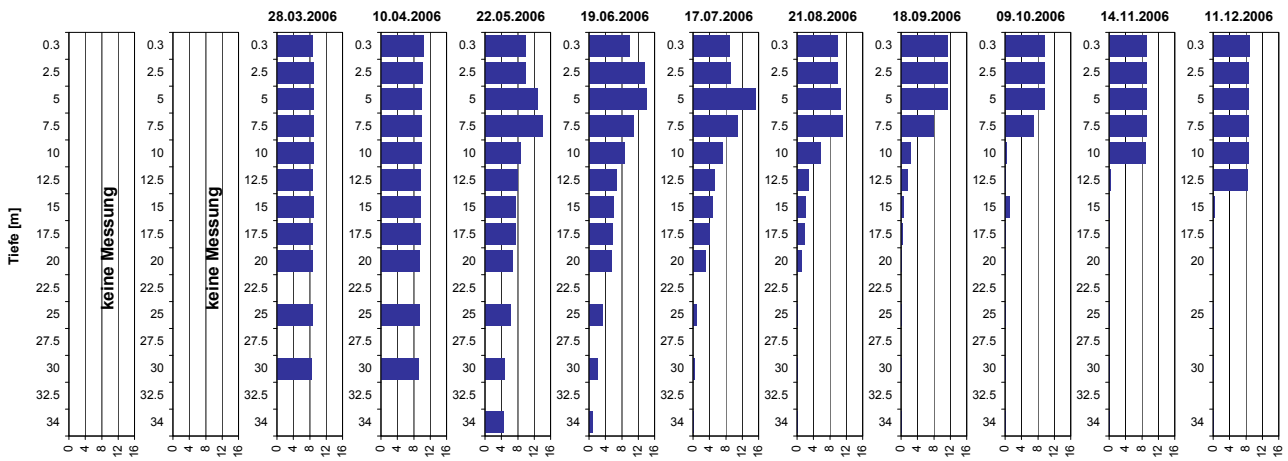
Tiefenprofile Pfäffikersee 2006

Temperatur [°C]



| Tiefe [m] | 28.03.2006 Temp [°C] | 10.04.2006 Temp [°C] | 22.05.2006 Temp [°C] | 19.06.2006 Temp [°C] | 17.07.2006 Temp [°C] | 21.08.2006 Temp [°C] | 18.09.2006 Temp [°C] | 09.10.2006 Temp [°C] | 14.11.2006 Temp [°C] | 11.12.2006 Temp [°C] |
|-----------|-------------------------|-------------------------|-------------------------|-------------------------|-------------------------|-------------------------|-------------------------|-------------------------|-------------------------|-------------------------|
| 0.3 | 3.7 | 5.3 | 15.9 | 22.5 | 24.1 | 19.8 | 19.1 | 16.1 | 10.7 | 8.0 |
| 2.5 | 3.7 | 5.2 | 15.7 | 18.9 | 24.0 | 19.7 | 19.2 | 16.1 | 10.7 | 8.0 |
| 5.0 | 3.8 | 5.1 | 12.7 | 15.5 | 20.2 | 18.5 | 19.0 | 16.1 | 10.7 | 8.0 |
| 7.5 | 3.8 | 5.1 | 7.5 | 7.5 | 10.0 | 13.0 | 15.2 | 14.7 | 10.6 | 8.0 |
| 10.0 | 3.8 | 5.0 | 5.9 | 6.5 | 7.2 | 8.0 | 8.4 | 8.8 | 10.6 | 8.0 |
| 12.5 | 3.7 | 4.9 | 5.6 | 5.8 | 6.1 | 6.3 | 6.8 | 6.8 | 6.7 | 8.0 |
| 15.0 | 3.8 | 4.9 | 5.4 | 5.5 | 5.6 | 5.6 | 5.8 | 5.9 | 5.9 | 6.4 |
| 17.5 | 3.7 | 4.9 | 5.3 | 5.3 | 5.4 | 5.4 | 5.6 | 5.5 | 5.5 | 5.9 |
| 20.0 | 3.8 | 4.8 | 5.2 | 5.2 | 5.2 | 5.2 | 5.4 | 5.4 | 5.3 | 5.5 |
| 25.0 | 3.7 | 4.8 | 5.0 | 5.0 | 5.0 | 5.1 | 5.1 | 5.1 | 5.1 | 5.2 |
| 30.0 | 3.6 | 4.7 | 5.0 | 5.0 | 5.0 | 5.0 | 5.0 | 5.0 | 5.1 | 5.1 |
| 34.0 | - | - | 5.0 | 4.9 | 5.0 | 5.0 | 5.0 | 5.0 | 5.0 | 5.1 |

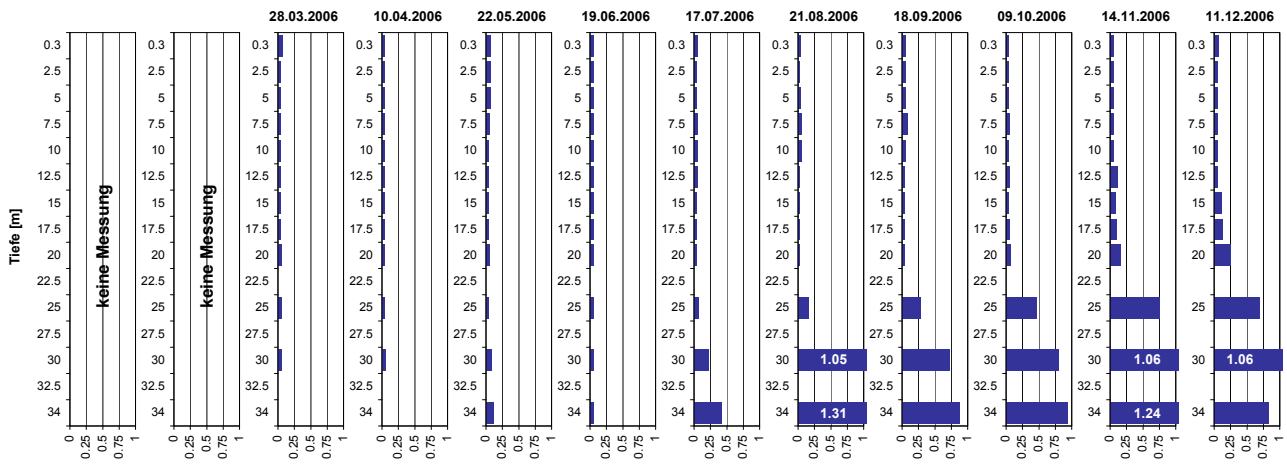
Sauerstoff [mg O₂/l]



| Tiefe [m] | 28.03.2006 O2 [mg O ₂ /l] | 10.04.2006 O2 [mg O ₂ /l] | 22.05.2006 O2 [mg O ₂ /l] | 19.06.2006 O2 [mg O ₂ /l] | 17.07.2006 O2 [mg O ₂ /l] | 21.08.2006 O2 [mg O ₂ /l] | 18.09.2006 O2 [mg O ₂ /l] | 09.10.2006 O2 [mg O ₂ /l] | 14.11.2006 O2 [mg O ₂ /l] | 11.12.2006 O2 [mg O ₂ /l] |
|-----------|---|---|---|---|---|---|---|---|---|---|
| 0.3 | 8.7 | 10.2 | 9.7 | 9.8 | 8.9 | 9.8 | 11.3 | 9.5 | 9.0 | 8.7 |
| 2.5 | 8.8 | 10.0 | 9.8 | 13.4 | 9.1 | 9.8 | 11.3 | 9.5 | 9.0 | 8.7 |
| 5.0 | 8.9 | 9.8 | 12.6 | 13.9 | 15.1 | 10.5 | 11.3 | 9.4 | 9.0 | 8.6 |
| 7.5 | 8.9 | 9.8 | 13.9 | 10.7 | 10.8 | 10.9 | 7.8 | 6.8 | 9.0 | 8.6 |
| 10.0 | 8.8 | 9.7 | 8.7 | 8.6 | 7.0 | 5.6 | 2.3 | 0.3 | 8.8 | 8.6 |
| 12.5 | 8.7 | 9.6 | 7.8 | 6.5 | 5.1 | 2.7 | 1.5 | 0.1 | 0.2 | 8.3 |
| 15.0 | 8.7 | 9.6 | 7.3 | 5.8 | 4.6 | 2.1 | 0.7 | 1.0 | 0.2 | 0.2 |
| 17.5 | 8.7 | 9.6 | 7.4 | 5.6 | 3.8 | 1.8 | 0.3 | 0.1 | 0.2 | 0.1 |
| 20.0 | 8.7 | 9.4 | 6.7 | 5.5 | 2.9 | 1.0 | 0.2 | 0.1 | 0.1 | 0.1 |
| 25.0 | 8.7 | 9.4 | 6.3 | 3.2 | 0.7 | 0.1 | 0.2 | 0.1 | 0.1 | 0.1 |
| 30.0 | 8.4 | 8.9 | 4.8 | 2.0 | 0.2 | 0.2 | 0.2 | 0.1 | 0.1 | 0.1 |
| 34.0 | - | - | 4.4 | 0.7 | 0.2 | 0.1 | 0.2 | 0.1 | 0.1 | 0.1 |

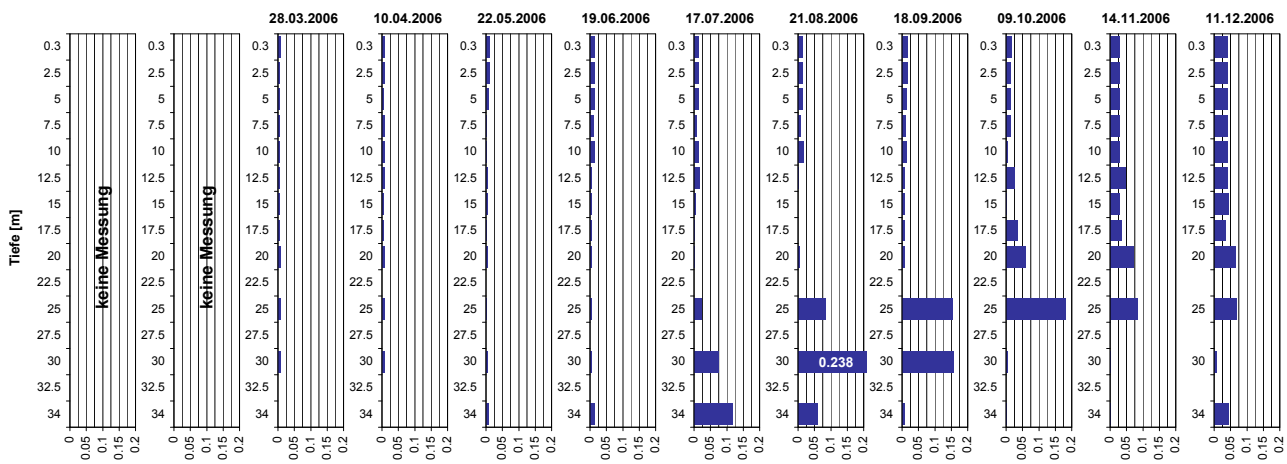
Tiefenprofile Pfäffikersee 2006

Ammonium [mg NH₄-N/l]



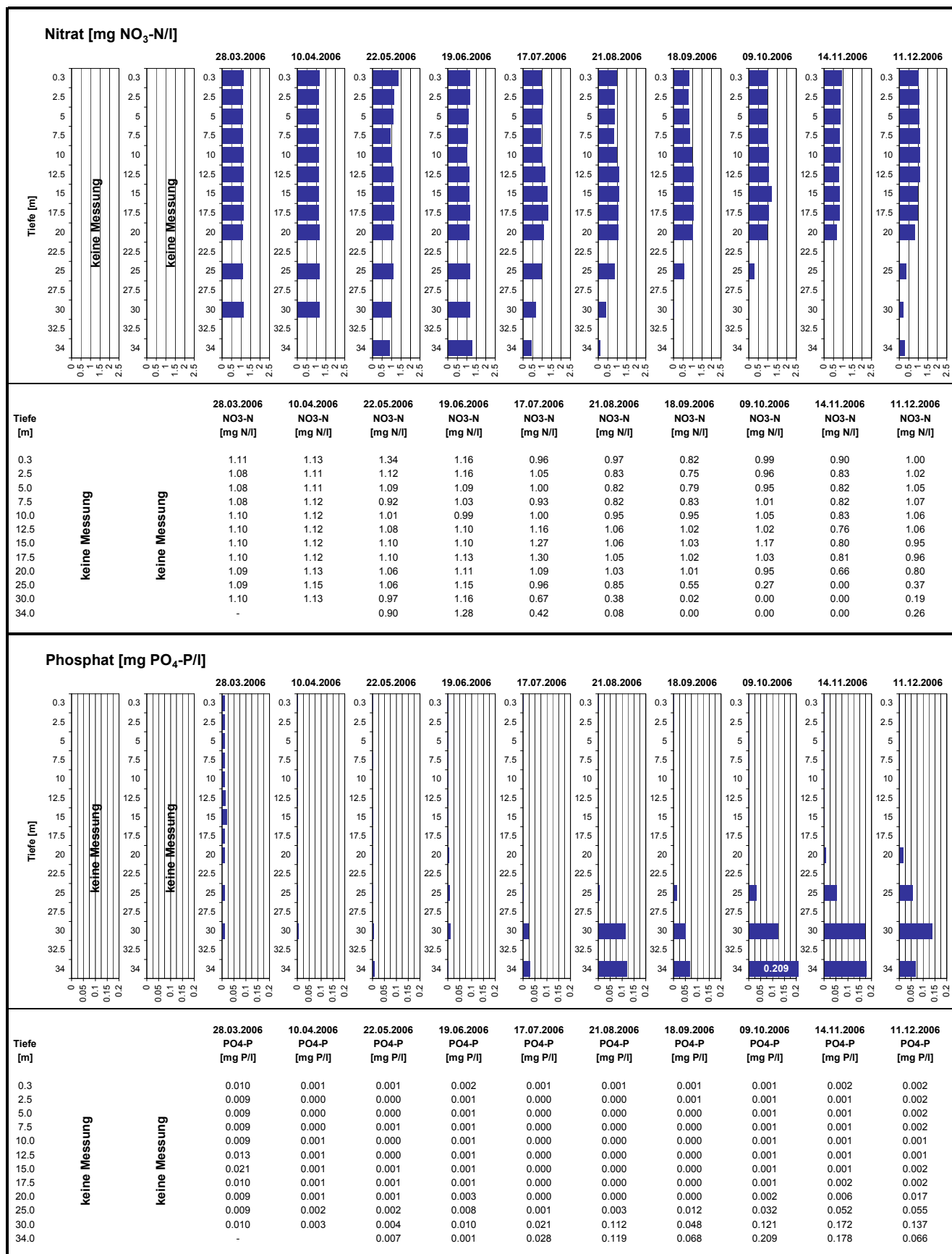
| Tiefe [m] | 28.03.2006 NH ₄ -N [mg N/l] | 10.04.2006 NH ₄ -N [mg N/l] | 22.05.2006 NH ₄ -N [mg N/l] | 19.06.2006 NH ₄ -N [mg N/l] | 17.07.2006 NH ₄ -N [mg N/l] | 21.08.2006 NH ₄ -N [mg N/l] | 18.09.2006 NH ₄ -N [mg N/l] | 09.10.2006 NH ₄ -N [mg N/l] | 14.11.2006 NH ₄ -N [mg N/l] | 11.12.2006 NH ₄ -N [mg N/l] |
|-----------|--|--|--|--|--|--|--|--|--|--|
| 0.3 | 0.06 | 0.04 | 0.07 | 0.05 | 0.04 | 0.03 | 0.05 | 0.04 | 0.05 | 0.06 |
| 2.5 | 0.04 | 0.04 | 0.06 | 0.04 | 0.04 | 0.03 | 0.05 | 0.03 | 0.04 | 0.05 |
| 5.0 | 0.04 | 0.03 | 0.07 | 0.04 | 0.04 | 0.03 | 0.04 | 0.03 | 0.04 | 0.05 |
| 7.5 | 0.04 | 0.03 | 0.05 | 0.04 | 0.05 | 0.05 | 0.08 | 0.05 | 0.04 | 0.05 |
| 10.0 | 0.04 | 0.04 | 0.04 | 0.05 | 0.05 | 0.05 | 0.04 | 0.03 | 0.05 | 0.05 |
| 12.5 | 0.04 | 0.04 | 0.03 | 0.04 | 0.04 | 0.02 | 0.04 | 0.04 | 0.11 | 0.05 |
| 15.0 | 0.04 | 0.03 | 0.03 | 0.04 | 0.03 | 0.02 | 0.04 | 0.03 | 0.08 | 0.11 |
| 17.5 | 0.04 | 0.03 | 0.03 | 0.05 | 0.03 | 0.02 | 0.03 | 0.04 | 0.09 | 0.12 |
| 20.0 | 0.04 | 0.04 | 0.05 | 0.05 | 0.03 | 0.02 | 0.04 | 0.06 | 0.16 | 0.25 |
| 25.0 | 0.05 | 0.03 | 0.03 | 0.05 | 0.07 | 0.15 | 0.28 | 0.45 | 0.75 | 0.69 |
| 30.0 | 0.05 | 0.05 | 0.07 | 0.05 | 0.22 | 1.05 | 0.71 | 0.80 | 1.06 | 1.06 |
| 34.0 | - | - | 0.11 | 0.05 | 0.41 | 1.31 | 0.88 | 0.94 | 1.24 | 0.83 |

Nitrit [mg NO₂-N/l]



| Tiefe [m] | 28.03.2006 NO ₂ -N [mg N/l] | 10.04.2006 NO ₂ -N [mg N/l] | 22.05.2006 NO ₂ -N [mg N/l] | 19.06.2006 NO ₂ -N [mg N/l] | 17.07.2006 NO ₂ -N [mg N/l] | 21.08.2006 NO ₂ -N [mg N/l] | 18.09.2006 NO ₂ -N [mg N/l] | 09.10.2006 NO ₂ -N [mg N/l] | 14.11.2006 NO ₂ -N [mg N/l] | 11.12.2006 NO ₂ -N [mg N/l] |
|-----------|--|--|--|--|--|--|--|--|--|--|
| 0.3 | 0.006 | 0.006 | 0.009 | 0.014 | 0.013 | 0.012 | 0.015 | 0.016 | 0.028 | 0.039 |
| 2.5 | 0.005 | 0.005 | 0.009 | 0.014 | 0.013 | 0.012 | 0.015 | 0.014 | 0.028 | 0.039 |
| 5.0 | 0.005 | 0.005 | 0.007 | 0.012 | 0.013 | 0.012 | 0.013 | 0.014 | 0.027 | 0.039 |
| 7.5 | 0.005 | 0.005 | 0.001 | 0.009 | 0.008 | 0.007 | 0.010 | 0.013 | 0.027 | 0.040 |
| 10.0 | 0.005 | 0.005 | 0.001 | 0.013 | 0.013 | 0.014 | 0.012 | 0.005 | 0.029 | 0.040 |
| 12.5 | 0.005 | 0.006 | 0.003 | 0.003 | 0.015 | 0.001 | 0.008 | 0.025 | 0.045 | 0.040 |
| 15.0 | 0.005 | 0.005 | 0.003 | 0.003 | 0.005 | 0.000 | 0.008 | 0.002 | 0.029 | 0.044 |
| 17.5 | 0.005 | 0.005 | 0.002 | 0.003 | 0.001 | 0.000 | 0.007 | 0.035 | 0.033 | 0.035 |
| 20.0 | 0.006 | 0.005 | 0.003 | 0.003 | 0.001 | 0.004 | 0.008 | 0.058 | 0.070 | 0.064 |
| 25.0 | 0.007 | 0.006 | 0.002 | 0.003 | 0.020 | 0.082 | 0.153 | 0.179 | 0.084 | 0.067 |
| 30.0 | 0.007 | 0.006 | 0.005 | 0.003 | 0.072 | 0.238 | 0.156 | 0.005 | 0.002 | 0.006 |
| 34.0 | - | - | 0.005 | 0.013 | 0.116 | 0.057 | 0.007 | 0.001 | 0.001 | 0.042 |

Tiefenprofile Pfäffikersee 2006



Tiefenprofile Pfäffikersee 2006

