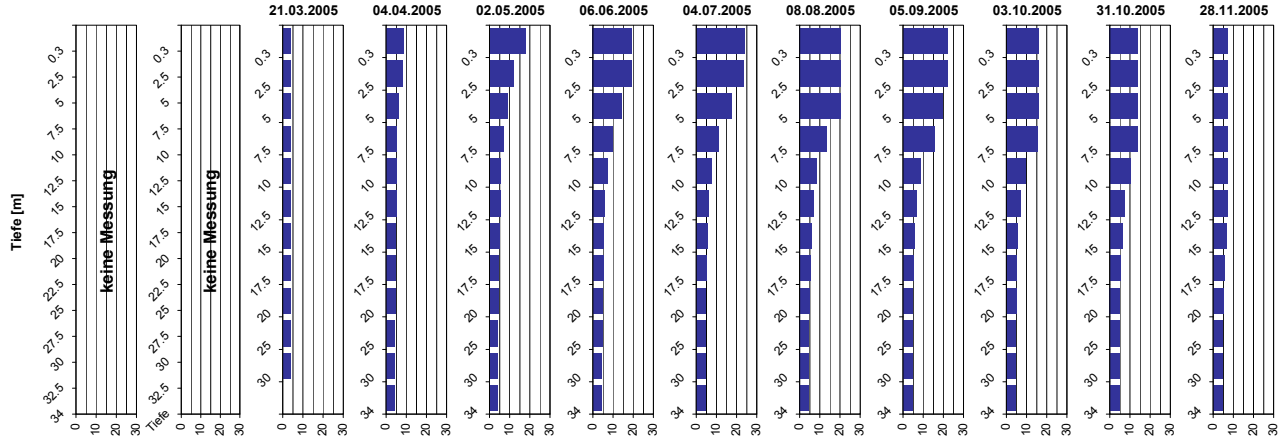
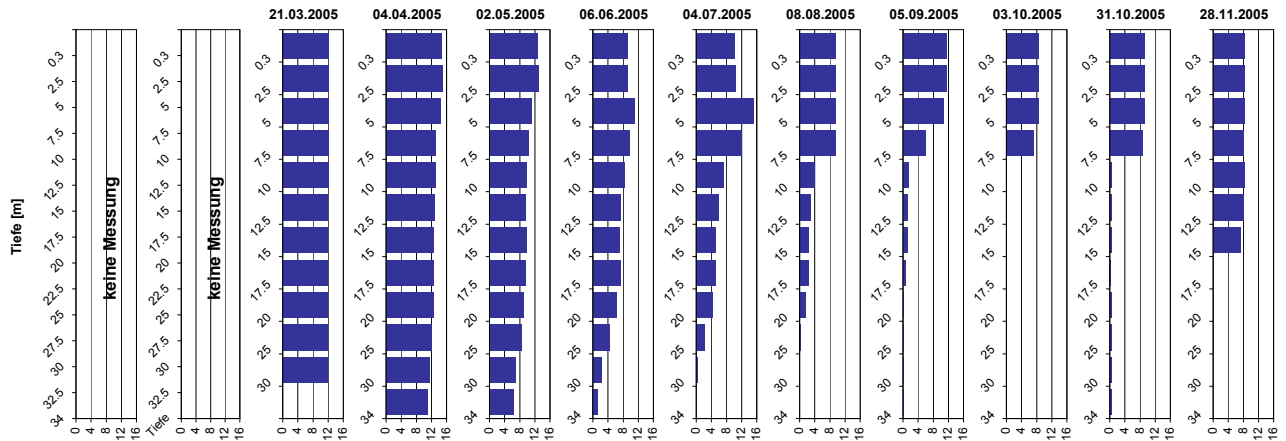


Temperatur [°C]



Tiefe [m]	21.03.2005 Temp [°C]	04.04.2005 Temp [°C]	02.05.2005 Temp [°C]	06.06.2005 Temp [°C]	04.07.2005 Temp [°C]	08.08.2005 Temp [°C]	05.09.2005 Temp [°C]	03.10.2005 Temp [°C]	31.10.2005 Temp [°C]	28.11.2005 Temp [°C]
0.3	3.7	8.5	18.0	19.2	23.9	20.5	22.0	16.0	13.7	6.8
2.5	3.7	7.8	11.7	19.2	23.5	20.4	22.0	16.0	13.7	6.8
5.0	3.7	6.1	9.0	14.2	17.6	20.4	19.3	16.0	13.7	6.8
7.5	3.6	5.0	7.1	9.9	11.1	13.2	15.2	15.3	13.7	6.8
10.0	3.7	5.0	5.7	7.0	7.5	8.2	8.8	9.7	10.0	6.8
12.5	3.7	4.9	5.4	5.9	6.1	6.6	6.3	7.0	7.2	6.8
15.0	3.7	4.6	5.0	5.3	5.3	5.7	5.7	5.8	6.0	6.7
17.5	3.7	4.6	4.7	4.9	4.9	5.2	5.1	5.3	5.2	5.3
20.0	3.7	4.5	4.5	4.5	4.7	4.8	4.8	5.0	4.9	5.1
25.0	3.7	4.3	4.2	4.4	4.5	4.6	4.6	4.6	4.7	4.7
30.0	3.7	4.1	4.2	4.4	4.4	4.5	4.6	4.6	4.6	4.6
34.0	-	4.1	4.2	4.4	4.4	4.5	4.5	4.6	4.6	4.6

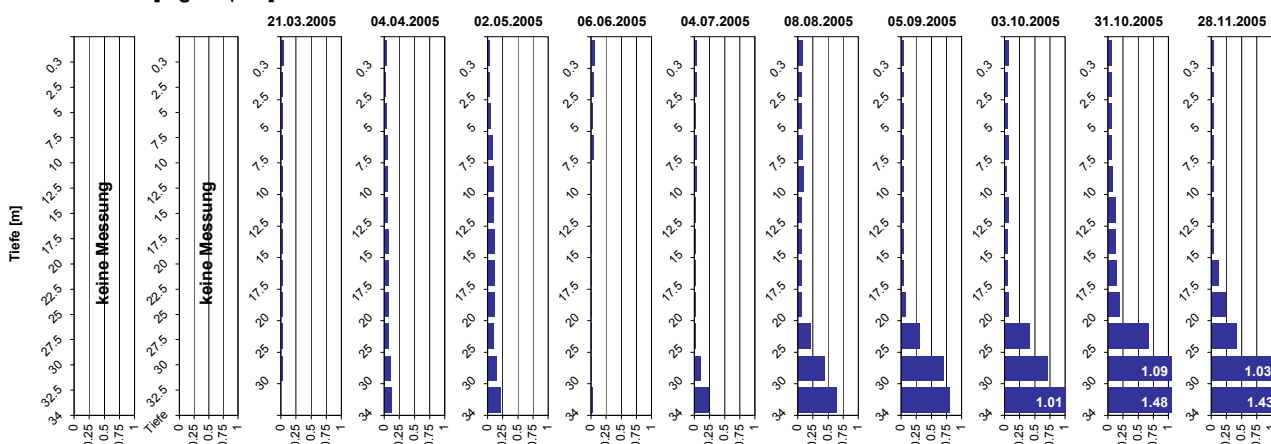
Sauerstoff [mg O₂/l]



Tiefe [m]	21.03.2005 O2 [mg O ₂ /l]	04.04.2005 O2 [mg O ₂ /l]	02.05.2005 O2 [mg O ₂ /l]	06.06.2005 O2 [mg O ₂ /l]	04.07.2005 O2 [mg O ₂ /l]	08.08.2005 O2 [mg O ₂ /l]	05.09.2005 O2 [mg O ₂ /l]	03.10.2005 O2 [mg O ₂ /l]	31.10.2005 O2 [mg O ₂ /l]	28.11.2005 O2 [mg O ₂ /l]
0.3	12.2	14.5	12.8	9.3	10.1	9.4	11.5	8.5	9.1	8.2
2.5	12.1	14.9	13.1	9.3	10.4	9.4	11.5	8.5	9.1	8.1
5.0	12.0	14.2	11.2	11.0	15.1	9.4	10.5	8.5	9.0	8.1
7.5	12.0	13.1	10.4	9.7	11.9	9.6	5.8	7.3	8.7	8.1
10.0	12.0	13.0	9.8	8.2	7.2	3.9	1.4	0.2	0.4	8.1
12.5	11.9	12.9	9.7	7.4	5.8	2.8	1.0	0.1	0.3	8.0
15.0	11.9	12.5	9.7	7.1	5.1	2.3	1.0	0.1	0.3	7.1
17.5	11.9	12.5	9.5	7.2	5.1	2.3	0.5	0.1	0.3	0.1
20.0	11.9	12.3	9.0	6.2	4.2	1.5	0.1	0.1	0.4	0.1
25.0	11.9	12.0	8.5	4.2	2.0	0.1	0.1	0.1	0.4	0.1
30.0	11.9	11.4	7.0	2.3	0.2	0.1	0.1	0.1	0.4	0.0
34.0	-	11.0	6.5	1.3	0.2	0.1	0.1	0.1	0.5	0.0

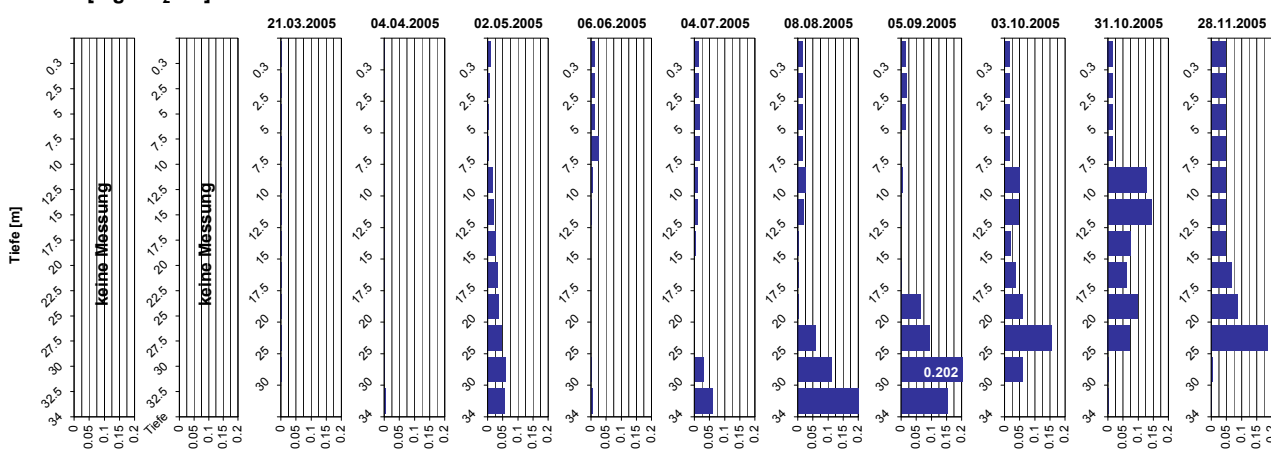
Tiefenprofile Pfäffikersee 2005

Ammonium [mg NH₄-N/l]



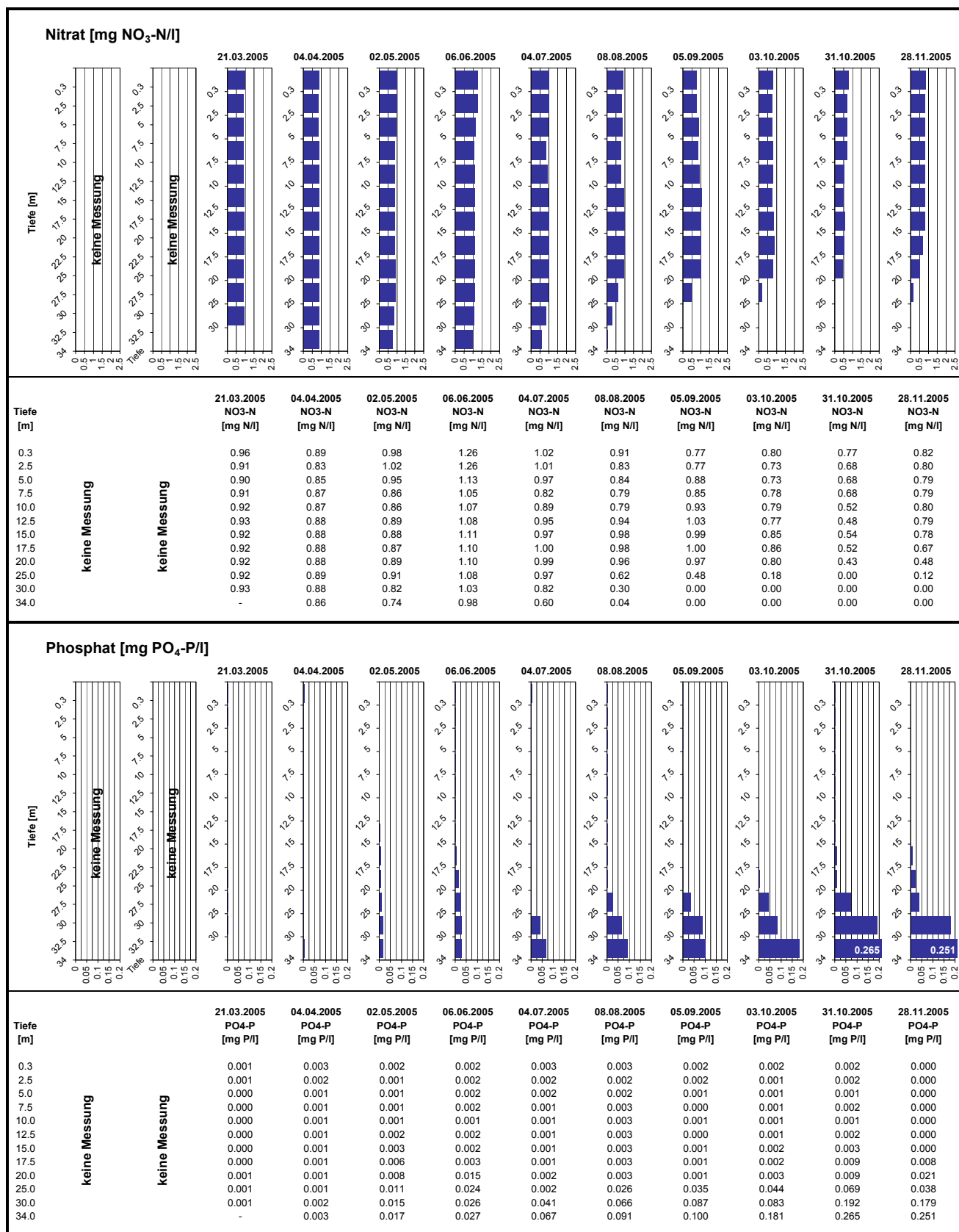
Tiefe [m]	21.03.2005 NH4-N [mg N/l]	04.04.2005 NH4-N [mg N/l]	02.05.2005 NH4-N [mg N/l]	06.06.2005 NH4-N [mg N/l]	04.07.2005 NH4-N [mg N/l]	08.08.2005 NH4-N [mg N/l]	05.09.2005 NH4-N [mg N/l]	03.10.2005 NH4-N [mg N/l]	31.10.2005 NH4-N [mg N/l]	28.11.2005 NH4-N [mg N/l]
0.3		0.04	0.02	0.05	0.04	0.07	0.04	0.07	0.06	0.04
2.5		0.03	0.03	0.04	0.03	0.06	0.03	0.06	0.06	0.04
5.0		0.03	0.05	0.02	0.03	0.06	0.04	0.06	0.06	0.04
7.5		0.03	0.09	0.03	0.04	0.09	0.04	0.06	0.06	0.04
10.0		0.03	0.11	0.01	0.04	0.09	0.03	0.04	0.07	0.04
12.5		0.03	0.11	0.00	0.03	0.06	0.03	0.06	0.12	0.04
15.0		0.02	0.11	0.01	0.02	0.06	0.03	0.06	0.12	0.04
17.5		0.03	0.12	0.01	0.02	0.06	0.03	0.05	0.15	0.12
20.0		0.03	0.11	0.01	0.02	0.06	0.06	0.06	0.19	0.24
25.0		0.03	0.10	0.01	0.02	0.22	0.29	0.42	0.66	0.41
30.0		0.03	0.16	0.01	0.10	0.44	0.70	0.71	1.09	1.03
34.0		-	0.22	0.03	0.23	0.63	0.80	1.01	1.48	1.43

Nitrit [mg NO₂-N/l]



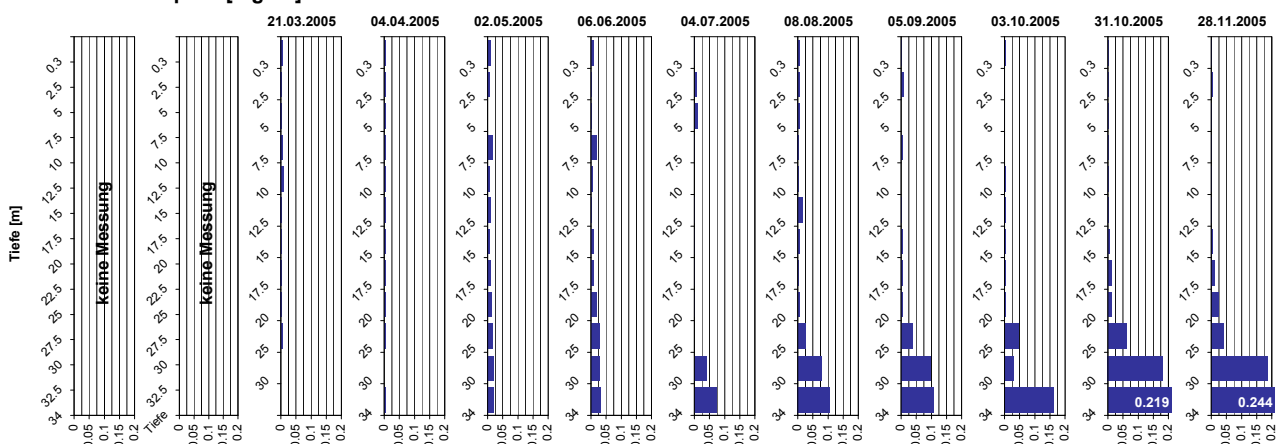
Tiefe [m]	21.03.2005 NO2-N [mg N/l]	04.04.2005 NO2-N [mg N/l]	02.05.2005 NO2-N [mg N/l]	06.06.2005 NO2-N [mg N/l]	04.07.2005 NO2-N [mg N/l]	08.08.2005 NO2-N [mg N/l]	05.09.2005 NO2-N [mg N/l]	03.10.2005 NO2-N [mg N/l]	31.10.2005 NO2-N [mg N/l]	28.11.2005 NO2-N [mg N/l]
0.3		0.001	0.009	0.011	0.015	0.015	0.015	0.016	0.016	0.046
2.5		0.001	0.005	0.011	0.015	0.015	0.015	0.015	0.016	0.046
5.0		0.001	0.004	0.011	0.016	0.015	0.015	0.016	0.016	0.046
7.5		0.001	0.004	0.022	0.016	0.016	0.001	0.016	0.016	0.045
10.0		0.001	0.016	0.003	0.011	0.027	0.004	0.051	0.127	0.045
12.5		0.001	0.021	0.001	0.010	0.019	0.001	0.045	0.141	0.046
15.0		0.001	0.026	0.000	0.004	0.003	0.000	0.022	0.073	0.047
17.5		0.001	0.033	0.000	0.000	0.002	0.001	0.036	0.060	0.068
20.0		0.001	0.036	0.000	0.000	0.002	0.065	0.060	0.099	0.086
25.0		0.001	0.045	0.000	0.000	0.059	0.092	0.156	0.072	0.185
30.0		0.001	0.058	0.001	0.031	0.111	0.202	0.059	0.002	0.003
34.0		-	0.055	0.005	0.059	0.200	0.151	0.001	0.001	0.001

Tiefenprofile Pfäffikersee 2005



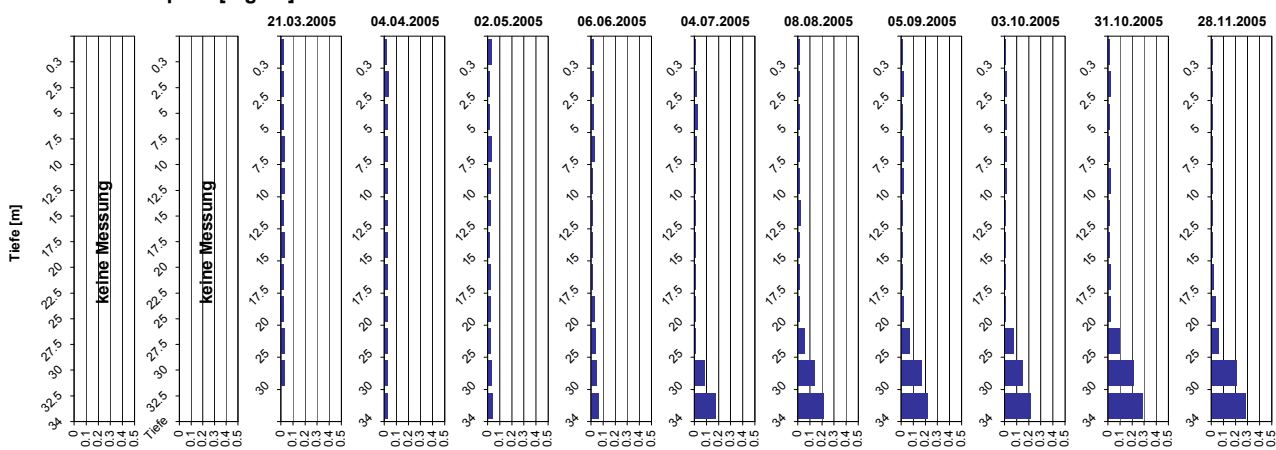
Tiefenprofile Pfäffikersee 2005

Gelöster Phosphor [mg P/l]



Tiefe [m]	21.03.2005 P-gel [mg P/l]	04.04.2005 P-gel [mg P/l]	02.05.2005 P-gel [mg P/l]	06.06.2005 P-gel [mg P/l]	04.07.2005 P-gel [mg P/l]	08.08.2005 P-gel [mg P/l]	05.09.2005 P-gel [mg P/l]	03.10.2005 P-gel [mg P/l]	31.10.2005 P-gel [mg P/l]	28.11.2005 P-gel [mg P/l]
0.3	0.006	0.003	0.008	0.006	0.001	0.004	0.002	0.002	0.001	0.002
2.5	0.003	0.004	0.006	0.002	0.007	0.006	0.007	0.001	0.002	0.003
5.0	0.003	0.004	0.000	0.001	0.011	0.004	0.000	0.002	0.002	0.002
7.5	0.006	0.005	0.016	0.015	0.001	0.003	0.006	0.000	0.001	0.002
10.0	0.009	0.004	0.007	0.006	0.000	0.002	0.000	0.003	0.002	0.002
12.5	0.004	0.004	0.008	0.002	0.001	0.013	0.002	0.003	0.003	0.002
15.0	0.002	0.005	0.005	0.006	0.002	0.005	0.003	0.004	0.004	0.003
17.5	0.003	0.004	0.010	0.006	0.002	0.001	0.003	0.004	0.011	0.010
20.0	0.004	0.004	0.012	0.018	0.002	0.005	0.003	0.005	0.010	0.024
25.0	0.004	0.003	0.016	0.028	0.000	0.024	0.037	0.045	0.061	0.041
30.0	0.000	0.000	0.019	0.029	0.041	0.077	0.095	0.031	0.181	0.185
34.0	-	0.005	0.020	0.029	0.075	0.105	0.108	0.162	0.219	0.244

Gesamt-Phosphor [mg P/l]



Tiefe [m]	21.03.2005 P-tot [mg P/l]	04.04.2005 P-tot [mg P/l]	02.05.2005 P-tot [mg P/l]	06.06.2005 P-tot [mg P/l]	04.07.2005 P-tot [mg P/l]	08.08.2005 P-tot [mg P/l]	05.09.2005 P-tot [mg P/l]	03.10.2005 P-tot [mg P/l]	31.10.2005 P-tot [mg P/l]	28.11.2005 P-tot [mg P/l]
0.3	0.025	0.017	0.028	0.016	0.008	0.012	0.011	0.012	0.009	0.011
2.5	0.025	0.032	0.019	0.016	0.018	0.015	0.018	0.015	0.016	0.012
5.0	0.025	0.027	0.018	0.018	0.030	0.012	0.011	0.016	0.011	0.010
7.5	0.026	0.028	0.034	0.027	0.015	0.016	0.017	0.017	0.009	0.012
10.0	0.031	0.027	0.023	0.014	0.012	0.015	0.015	0.017	0.017	0.010
12.5	0.024	0.026	0.023	0.012	0.010	0.022	0.010	0.012	0.014	0.010
15.0	0.026	0.025	0.019	0.012	0.011	0.014	0.012	0.012	0.014	0.012
17.5	0.024	0.024	0.023	0.012	0.010	0.014	0.011	0.011	0.021	0.020
20.0	0.024	0.023	0.024	0.024	0.011	0.016	0.016	0.011	0.020	0.035
25.0	0.025	0.023	0.027	0.036	0.014	0.059	0.063	0.070	0.098	0.057
30.0	0.025	0.025	0.032	0.046	0.084	0.139	0.170	0.148	0.212	0.208
34.0	-	0.029	0.037	0.060	0.172	0.212	0.221	0.217	0.282	0.283