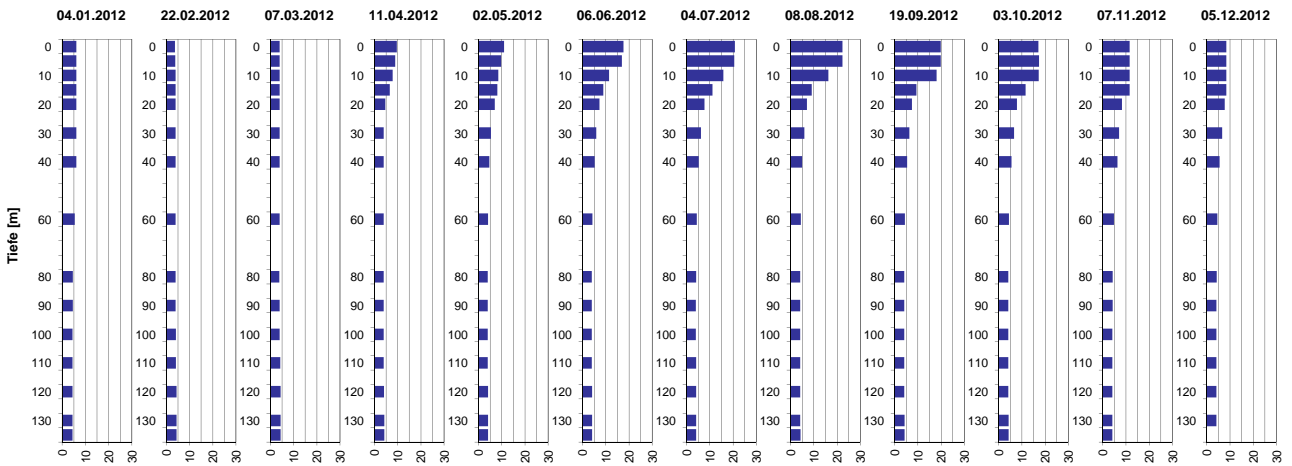


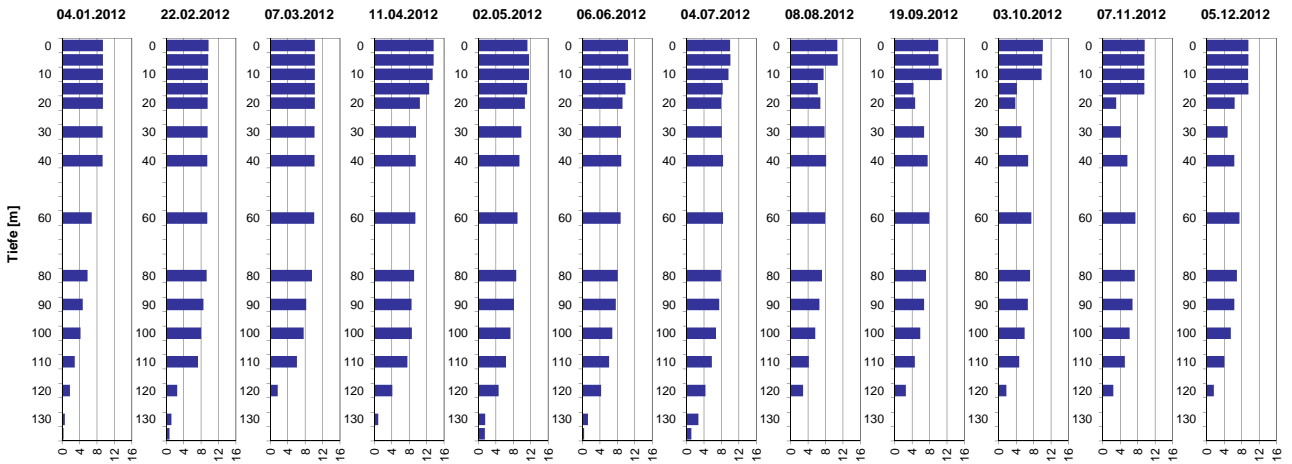
Tiefenprofile Zürichsee 2012

Temperatur [°C]



Tiefe [m]	04.01.2012 Temp [°C]	22.02.2012 Temp [°C]	07.03.2012 Temp [°C]	11.04.2012 Temp [°C]	02.05.2012 Temp [°C]	06.06.2012 Temp [°C]	04.07.2012 Temp [°C]	08.08.2012 Temp [°C]	19.09.2012 Temp [°C]	03.10.2012 Temp [°C]	07.11.2012 Temp [°C]	05.12.2012 Temp [°C]
0	6.1	3.8	4.1	9.7	11.0	17.7	20.8	22.4	19.8	17.1	11.6	8.4
5	6.1	3.9	4.1	9.0	9.8	17.0	20.5	22.4	19.8	17.4	11.6	8.4
10	6.1	4.0	4.1	7.9	8.6	11.5	15.8	16.3	18.1	17.3	11.6	8.5
15	6.1	4.0	4.1	6.7	8.2	9.0	11.2	9.1	9.4	11.6	11.6	8.5
20	6.1	4.0	4.1	4.7	7.0	7.4	7.8	7.1	7.5	7.9	8.3	7.7
40	6.1	4.0	4.1	4.0	4.7	5.3	5.3	5.0	5.4	5.6	6.4	5.6
60	5.4	4.0	4.0	4.0	4.2	4.3	4.5	4.4	4.4	4.5	4.9	4.6
80	4.6	4.0	3.9	4.0	4.1	4.1	4.2	4.2	4.2	4.2	4.3	4.3
90	4.6	4.1	4.0	4.0	4.0	4.1	4.1	4.2	4.2	4.2	4.3	4.2
100	4.5	4.2	4.1	4.0	4.1	4.1	4.1	4.2	4.2	4.2	4.2	4.2
110	4.5	4.2	4.3	4.0	4.1	4.1	4.2	4.2	4.2	4.2	4.2	4.2
120	4.5	4.5	4.4	4.2	4.2	4.2	4.2	4.2	4.2	4.2	4.2	4.2
130	4.4	4.5	4.5	4.3	4.2	4.2	4.2	4.2	4.3	4.3	4.2	4.2
135	4.4	4.5	4.5	4.3	4.2	4.2	4.2	4.3	4.3	4.3	4.2	0.0

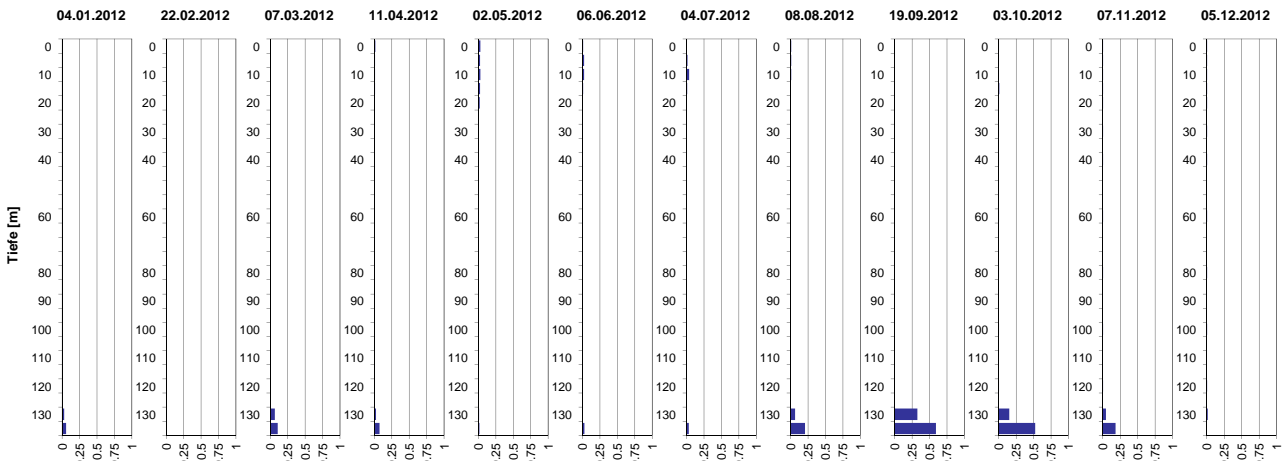
Sauerstoff [mg O₂/l]



Tiefe [m]	04.01.2012 O ₂ [mg O ₂ /l]	22.02.2012 O ₂ [mg O ₂ /l]	07.03.2012 O ₂ [mg O ₂ /l]	11.04.2012 O ₂ [mg O ₂ /l]	02.05.2012 O ₂ [mg O ₂ /l]	06.06.2012 O ₂ [mg O ₂ /l]	04.07.2012 O ₂ [mg O ₂ /l]	08.08.2012 O ₂ [mg O ₂ /l]	19.09.2012 O ₂ [mg O ₂ /l]	03.10.2012 O ₂ [mg O ₂ /l]	07.11.2012 O ₂ [mg O ₂ /l]	05.12.2012 O ₂ [mg O ₂ /l]
0	9.4	9.7	10.2	13.6	11.3	10.4	10.0	10.8	10.0	10.2	9.6	9.6
5	9.4	9.6	10.3	13.6	11.6	10.5	10.1	10.8	10.1	10.0	9.5	9.5
10	9.4	9.6	10.2	13.4	11.7	11.2	9.6	7.6	10.8	9.8	9.6	9.5
15	9.4	9.6	10.2	12.6	11.2	9.9	8.3	6.3	4.4	4.2	9.6	9.5
20	9.3	9.5	10.2	10.4	10.6	9.2	7.9	6.8	4.8	3.8	3.1	6.4
40	9.3	9.5	10.1	9.5	9.4	8.9	8.4	8.1	7.6	6.8	5.7	6.4
60	6.8	9.4	10.1	9.4	9.0	8.7	8.4	8.0	7.9	7.5	7.5	7.5
80	5.8	9.3	9.6	9.1	8.7	8.1	7.9	7.2	7.3	7.2	7.4	6.9
90	4.7	8.6	8.3	8.5	8.2	7.7	7.5	6.6	6.8	6.7	6.8	6.4
100	4.2	8.0	7.7	8.6	7.4	6.9	6.8	5.7	5.9	6.0	6.2	5.5
110	2.9	7.3	6.1	7.6	6.3	6.2	5.8	4.2	4.7	4.7	5.1	4.0
120	1.8	2.5	1.7	4.1	4.7	4.3	4.3	2.9	2.6	1.8	2.5	1.6
130	0.6	1.2	0.0	0.9	1.6	1.3	2.7	0.0	0.0	0.0	0.0	0.0
135	0.4	0.8	0.0	0.0	1.5	0.4	1.1	0.0	0.0	0.0	0.0	0.0

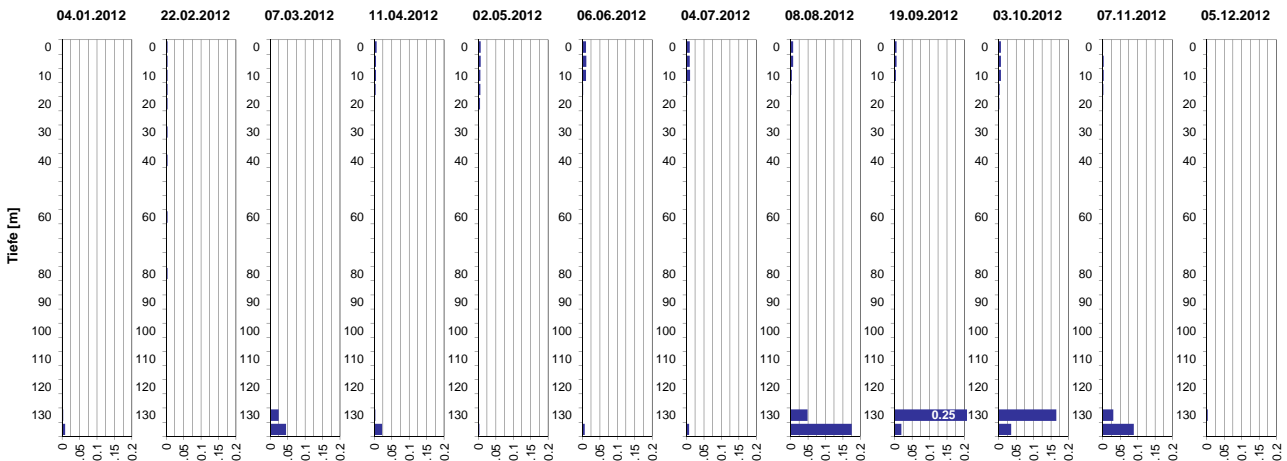
Tiefenprofile Zürichsee 2012

Ammonium [mg NH₄-N/l]



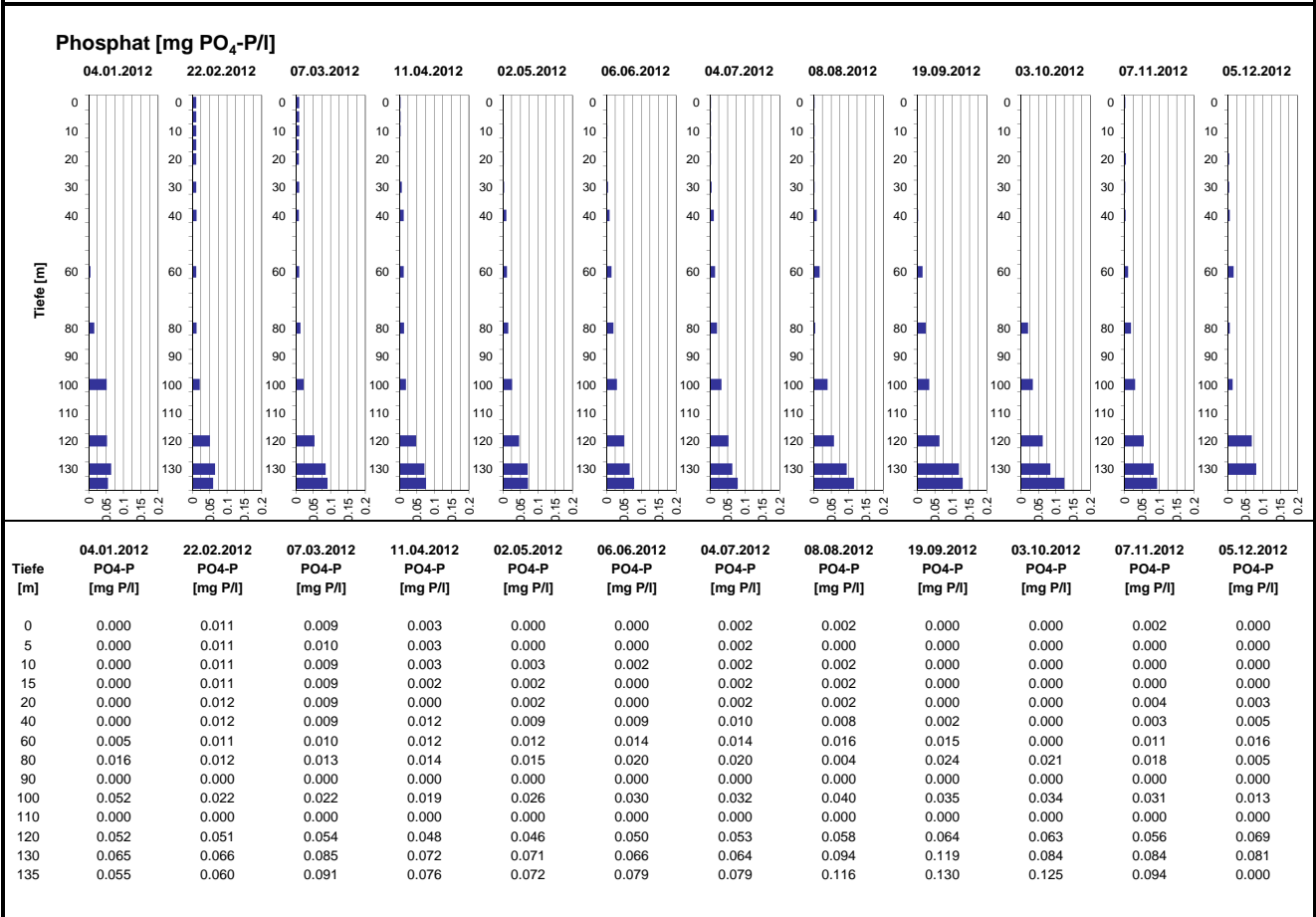
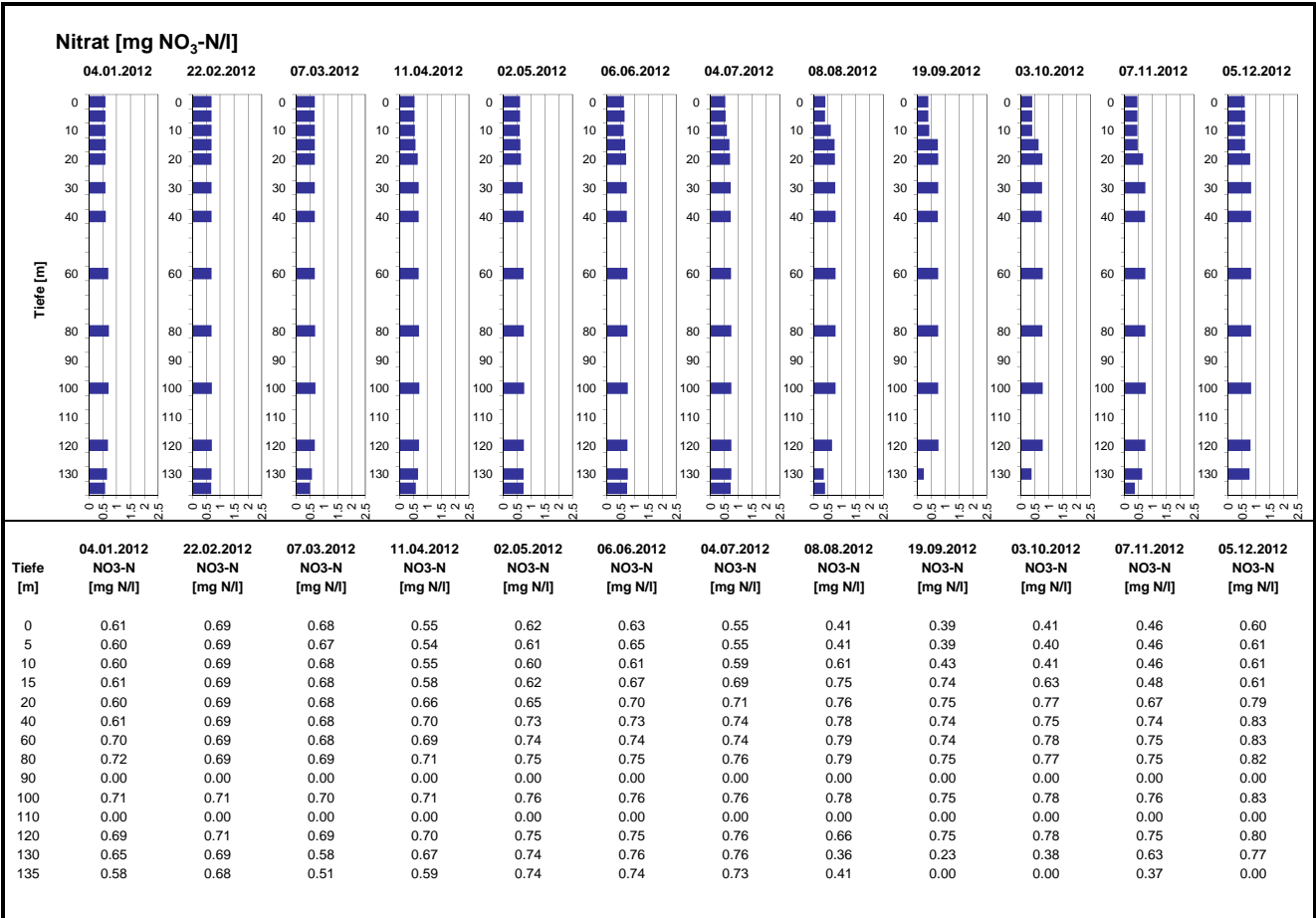
Tiefe [m]	04.01.2012 NH4-N [mg N/l]	22.02.2012 NH4-N [mg N/l]	07.03.2012 NH4-N [mg N/l]	11.04.2012 NH4-N [mg N/l]	02.05.2012 NH4-N [mg N/l]	06.06.2012 NH4-N [mg N/l]	04.07.2012 NH4-N [mg N/l]	08.08.2012 NH4-N [mg N/l]	19.09.2012 NH4-N [mg N/l]	03.10.2012 NH4-N [mg N/l]	07.11.2012 NH4-N [mg N/l]	05.12.2012 NH4-N [mg N/l]
0	0.00	0.00	0.01	0.02	0.03	0.01	0.01	0.01	0.00	0.01	0.00	0.00
5	0.00	0.00	0.00	0.01	0.02	0.03	0.01	0.01	0.00	0.00	0.00	0.00
10	0.00	0.00	0.01	0.01	0.03	0.02	0.04	0.01	0.00	0.00	0.00	0.00
15	0.00	0.00	0.01	0.01	0.03	0.01	0.01	0.01	0.00	0.01	0.00	0.00
20	0.00	0.00	0.01	0.01	0.02	0.00	0.01	0.00	0.00	0.01	0.00	0.00
40	0.00	0.00	0.00	0.01	0.00	0.01	0.00	0.00	0.00	0.01	0.00	0.00
60	0.00	0.00	0.01	0.01	0.00	0.01	0.00	0.00	0.00	0.00	0.00	0.00
80	0.00	0.00	0.00	0.00	0.00	0.00	0.00	0.00	0.00	0.00	0.00	0.00
90	0.00	0.00	0.00	0.00	0.00	0.00	0.00	0.00	0.00	0.00	0.00	0.00
100	0.01	0.01	0.00	0.01	0.00	0.00	0.00	0.00	0.00	0.01	0.00	0.00
110	0.00	0.00	0.00	0.00	0.00	0.00	0.00	0.00	0.00	0.00	0.00	0.00
120	0.01	0.00	0.00	0.01	0.00	0.00	0.00	0.00	0.00	0.00	0.00	0.00
130	0.03	0.00	0.06	0.02	0.01	0.00	0.00	0.07	0.33	0.15	0.05	0.01
135	0.06	0.01	0.11	0.08	0.02	0.03	0.03	0.21	0.59	0.52	0.18	0.00

Nitrit [mg NO₂-N/l]



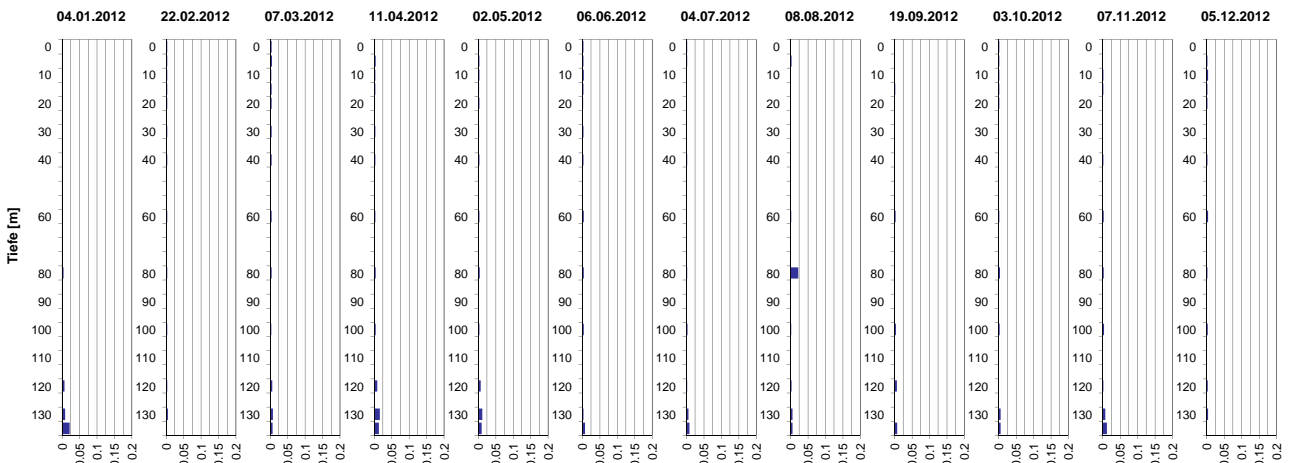
Tiefe [m]	04.01.2012 NO2-N [mg N/l]	22.02.2012 NO2-N [mg N/l]	07.03.2012 NO2-N [mg N/l]	11.04.2012 NO2-N [mg N/l]	02.05.2012 NO2-N [mg N/l]	06.06.2012 NO2-N [mg N/l]	04.07.2012 NO2-N [mg N/l]	08.08.2012 NO2-N [mg N/l]	19.09.2012 NO2-N [mg N/l]	03.10.2012 NO2-N [mg N/l]	07.11.2012 NO2-N [mg N/l]	05.12.2012 NO2-N [mg N/l]
0	0.001	0.004	0.002	0.007	0.006	0.010	0.009	0.007	0.006	0.007	0.000	0.001
5	0.001	0.004	0.002	0.005	0.006	0.011	0.009	0.007	0.006	0.007	0.003	0.001
10	0.001	0.004	0.002	0.005	0.006	0.010	0.010	0.004	0.004	0.007	0.003	0.001
15	0.001	0.004	0.002	0.004	0.006	0.002	0.002	0.002	0.000	0.003	0.003	0.001
20	0.001	0.004	0.002	0.002	0.005	0.001	0.002	0.001	0.000	0.002	0.001	0.000
40	0.001	0.004	0.002	0.001	0.001	0.000	0.001	0.000	0.000	0.001	0.000	0.000
60	0.000	0.004	0.002	0.001	0.001	0.000	0.000	0.000	0.000	0.001	0.000	0.000
80	0.000	0.004	0.001	0.001	0.001	0.000	0.000	0.000	0.000	0.001	0.000	0.000
90	0.000	0.000	0.000	0.000	0.000	0.000	0.000	0.000	0.000	0.000	0.000	0.000
100	0.002	0.002	0.000	0.001	0.000	0.000	0.000	0.000	0.000	0.001	0.000	0.000
110	0.000	0.000	0.000	0.000	0.000	0.000	0.000	0.000	0.000	0.000	0.000	0.000
120	0.002	0.000	0.000	0.000	0.000	0.000	0.000	0.000	0.000	0.001	0.000	0.000
130	0.003	0.001	0.025	0.003	0.003	0.001	0.000	0.049	0.250	0.165	0.030	0.003
135	0.009	0.003	0.045	0.022	0.003	0.007	0.008	0.175	0.019	0.036	0.090	0.000

Tiefenprofile Zürichsee 2012



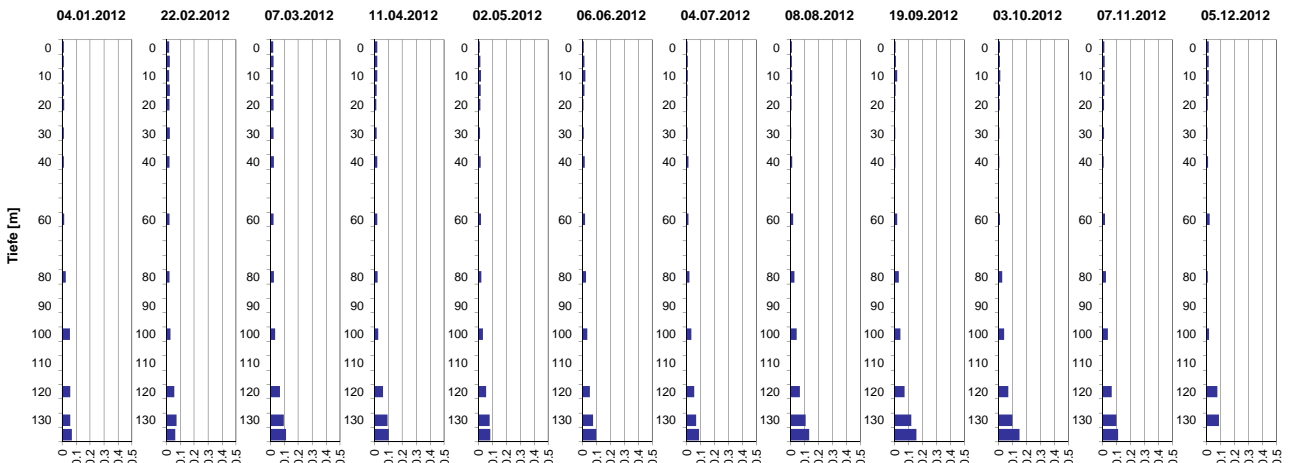
Tiefenprofile Zürichsee 2012

Gelöster Phosphor [mg P/l]



Tiefe [m]	04.01.2012 P-gel [mg P/l]	22.02.2012 P-gel [mg P/l]	07.03.2012 P-gel [mg P/l]	11.04.2012 P-gel [mg P/l]	02.05.2012 P-gel [mg P/l]	06.06.2012 P-gel [mg P/l]	04.07.2012 P-gel [mg P/l]	08.08.2012 P-gel [mg P/l]	19.09.2012 P-gel [mg P/l]	03.10.2012 P-gel [mg P/l]	07.11.2012 P-gel [mg P/l]	05.12.2012 P-gel [mg P/l]
0	0.000	0.003	0.004	0.003	0.002	0.003	0.002	0.000	0.000	0.002	0.000	0.000
5	0.000	0.003	0.005	0.004	0.003	0.003	0.002	0.003	0.000	0.002	0.000	0.002
10	0.000	0.003	0.003	0.003	0.003	0.004	0.000	0.000	0.000	0.002	0.002	0.004
15	0.000	0.003	-	0.003	0.002	0.003	0.000	0.000	0.002	0.002	0.002	0.002
20	0.000	0.003	0.004	0.003	0.003	0.002	0.000	0.000	0.000	0.002	0.000	0.002
40	0.000	0.003	0.004	0.003	0.003	0.003	0.002	0.000	0.000	0.000	0.002	0.002
60	0.002	0.003	0.004	0.003	0.003	0.004	0.000	0.003	0.003	0.002	0.003	0.004
80	0.004	0.003	0.004	0.004	0.004	0.004	0.002	0.022	0.000	0.004	0.003	0.002
90	0.000	0.000	0.000	0.000	0.000	0.000	0.000	0.000	0.000	0.000	0.000	0.000
100	0.000	0.003	0.003	0.004	0.003	0.004	0.003	0.002	0.004	0.003	0.004	0.003
110	0.000	0.000	0.000	0.000	0.000	0.000	0.000	0.000	0.000	0.000	0.000	0.000
120	0.007	0.003	0.005	0.008	0.006	0.000	0.002	0.003	0.007	0.000	0.002	0.003
130	0.008	0.005	0.007	0.016	0.011	0.003	0.005	0.006	0.000	0.006	0.008	0.004
135	0.021	0.000	0.007	0.014	0.010	0.008	0.009	0.006	0.008	0.006	0.012	0.000

Gesamt-Phosphor [mg P/l]



Tiefe [m]	04.01.2012 P-tot [mg P/l]	22.02.2012 P-tot [mg P/l]	07.03.2012 P-tot [mg P/l]	11.04.2012 P-tot [mg P/l]	02.05.2012 P-tot [mg P/l]	06.06.2012 P-tot [mg P/l]	04.07.2012 P-tot [mg P/l]	08.08.2012 P-tot [mg P/l]	19.09.2012 P-tot [mg P/l]	03.10.2012 P-tot [mg P/l]	07.11.2012 P-tot [mg P/l]	05.12.2012 P-tot [mg P/l]
0	0.013	0.021	0.022	0.021	0.010	0.010	0.008	0.009	0.009	0.011	0.012	0.014
5	0.012	0.025	0.023	0.022	0.014	0.015	0.009	0.010	0.010	0.011	0.014	0.014
10	0.013	0.022	0.022	0.021	0.020	0.021	0.009	0.013	0.020	0.011	0.014	0.015
15	0.013	0.025	0.022	0.017	0.016	0.014	0.009	0.009	0.008	0.010	0.013	0.013
20	0.014	0.024	0.023	0.014	0.015	0.009	0.006	0.007	0.006	0.008	0.009	0.008
40	0.013	0.023	0.026	0.021	0.018	0.017	0.014	0.012	0.006	0.006	0.007	0.009
60	0.015	0.024	0.024	0.021	0.020	0.019	0.015	0.019	0.020	0.010	0.016	0.022
80	0.025	0.023	0.025	0.023	0.022	0.025	0.022	0.029	0.030	0.027	0.023	0.008
90	0.000	0.000	0.000	0.000	0.000	0.000	0.000	0.000	0.000	0.000	0.000	0.000
100	0.055	0.031	0.034	0.028	0.034	0.036	0.035	0.045	0.043	0.039	0.038	0.018
110	0.000	0.000	0.000	0.000	0.000	0.000	0.000	0.000	0.000	0.000	0.000	0.000
120	0.059	0.059	0.069	0.062	0.057	0.053	0.055	0.068	0.071	0.069	0.066	0.077
130	0.059	0.074	0.098	0.095	0.082	0.075	0.070	0.108	0.119	0.100	0.099	0.087
135	0.070	0.065	0.112	0.104	0.085	0.099	0.090	0.133	0.156	0.151	0.111	0.000