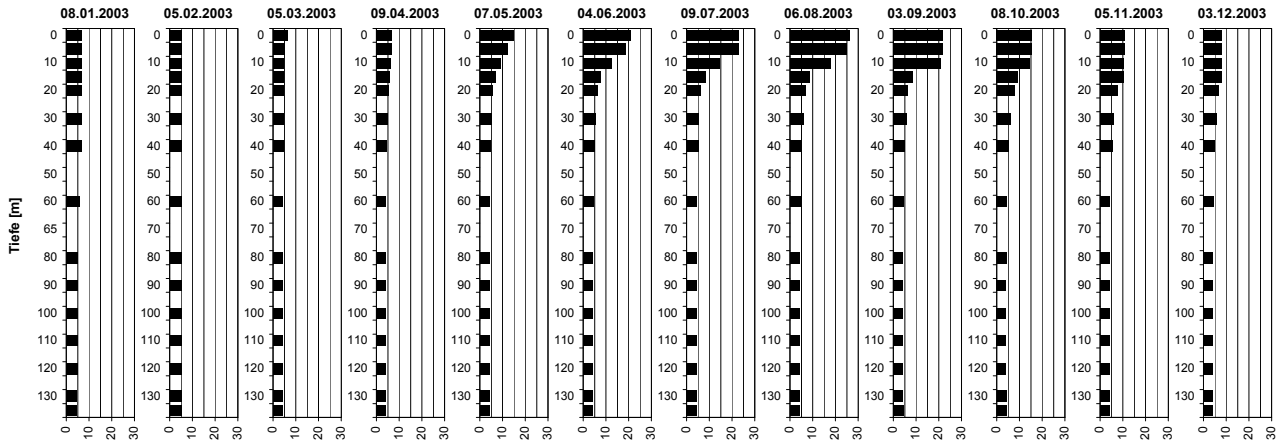
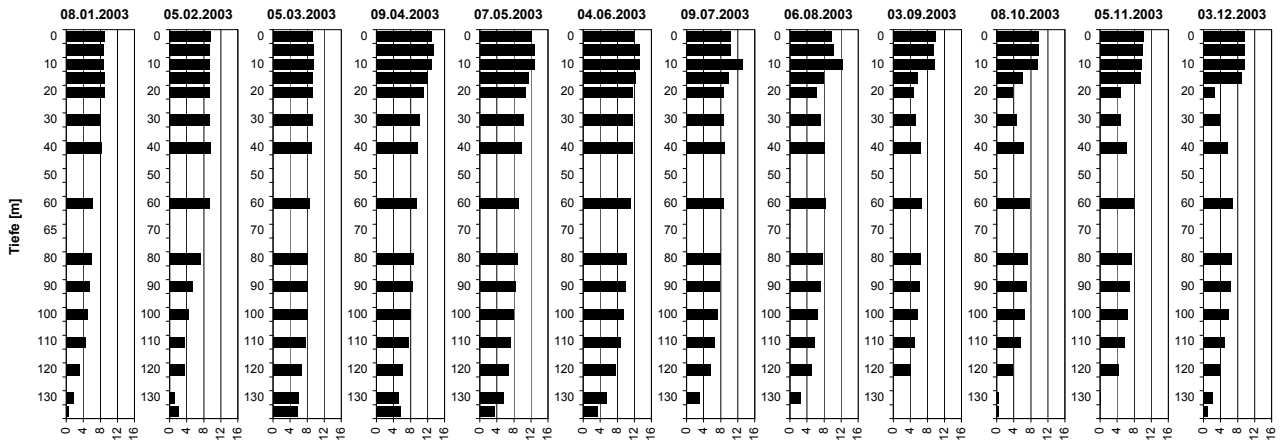


## Temperatur [°C]



Tiefe [m]	08.01.2003 Temp [°C]	05.02.2003 Temp [°C]	05.03.2003 Temp [°C]	09.04.2003 Temp [°C]	07.05.2003 Temp [°C]	04.06.2003 Temp [°C]	09.07.2003 Temp [°C]	06.08.2003 Temp [°C]	03.09.2003 Temp [°C]	08.10.2003 Temp [°C]	05.11.2003 Temp [°C]	03.12.2003 Temp [°C]
0	6.7	5.2	6.0	6.7	14.7	20.9	22.7	25.9	21.9	15.4	10.4	8.2
5	6.6	5.2	4.8	6.7	12.3	18.5	22.7	24.7	21.9	15.4	10.4	8.2
10	6.6	5.2	4.5	6.4	8.9	12.4	14.3	17.8	20.7	14.4	10.3	8.2
15	6.6	5.2	4.4	5.9	6.8	7.4	8.1	8.5	8.3	9.2	10.1	8.0
20	6.6	5.3	4.4	5.3	5.7	6.4	6.3	6.7	6.4	7.8	7.4	6.7
30	6.6	5.3	4.4	4.9	4.9	5.5	5.4	5.6	5.7	6.0	5.8	5.8
40	6.6	5.3	4.3	4.5	4.6	4.9	5.0	5.1	5.1	5.3	5.2	5.1
60	5.6	5.3	4.2	4.2	4.3	4.4	4.4	4.5	4.4	4.4	4.2	4.3
80	5.0	5.1	4.2	4.1	4.2	4.2	4.2	4.2	4.2	4.1	4.1	4.1
90	4.9	5.1	4.1	4.1	4.2	4.2	4.2	4.2	4.2	4.0	4.0	4.1
100	4.8	5.1	4.1	4.1	4.2	4.1	4.2	4.2	4.2	4.0	4.0	4.1
110	4.8	5.1	4.1	4.1	4.2	4.2	4.2	4.2	4.2	4.0	4.0	4.0
120	4.8	5.0	4.2	4.2	4.2	4.2	4.2	4.2	4.2	4.0	4.0	4.1
130	4.7	5.0	4.2	4.2	4.2	4.2	4.2	4.2	4.2	4.1	4.0	4.1
135	4.7	5.0	4.2	4.2	4.2	4.2	4.2	4.2	4.3	4.1	4.1	4.1

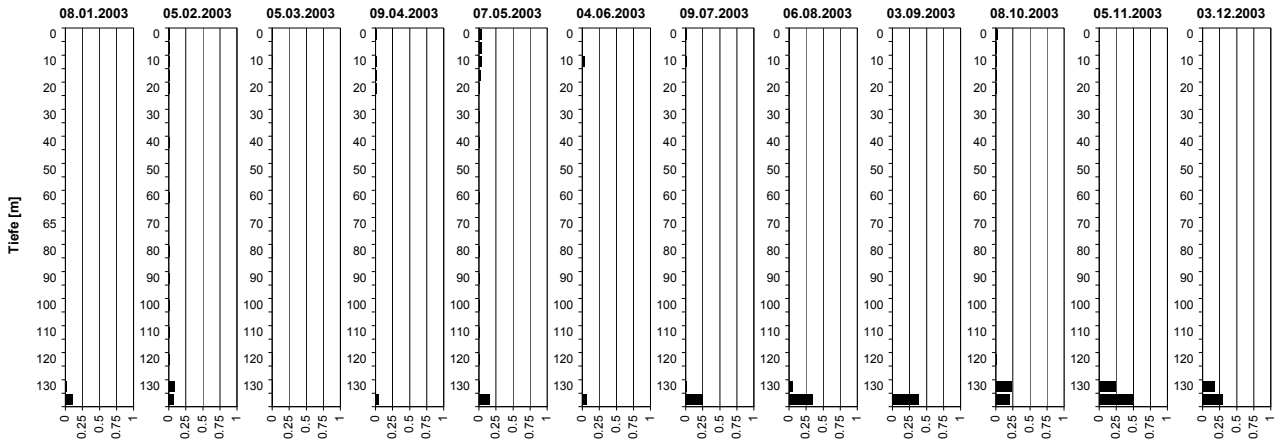
## Sauerstoff [mg O<sub>2</sub>/l]



Tiefe [m]	08.01.2003 O <sub>2</sub> [mg O <sub>2</sub> /l]	05.02.2003 O <sub>2</sub> [mg O <sub>2</sub> /l]	05.03.2003 O <sub>2</sub> [mg O <sub>2</sub> /l]	09.04.2003 O <sub>2</sub> [mg O <sub>2</sub> /l]	07.05.2003 O <sub>2</sub> [mg O <sub>2</sub> /l]	04.06.2003 O <sub>2</sub> [mg O <sub>2</sub> /l]	09.07.2003 O <sub>2</sub> [mg O <sub>2</sub> /l]	06.08.2003 O <sub>2</sub> [mg O <sub>2</sub> /l]	03.09.2003 O <sub>2</sub> [mg O <sub>2</sub> /l]	08.10.2003 O <sub>2</sub> [mg O <sub>2</sub> /l]	05.11.2003 O <sub>2</sub> [mg O <sub>2</sub> /l]	03.12.2003 O <sub>2</sub> [mg O <sub>2</sub> /l]
0	8.9	9.5	9.1	13.0	12.1	11.9	10.4	9.8	9.9	9.8	10.1	9.8
5	8.8	9.5	9.5	13.4	12.8	13.1	10.3	10.1	9.3	9.8	9.8	9.7
10	8.8	9.5	9.4	12.8	12.8	13.1	13.2	12.2	9.7	9.5	9.7	9.8
15	8.9	9.5	9.3	11.9	11.5	12.3	9.7	7.9	5.5	5.9	9.3	9.0
20	8.9	9.4	9.2	11.1	10.7	11.5	8.6	6.1	4.6	3.7	4.6	2.7
30	7.8	9.5	9.1	10.3	10.2	11.6	8.8	7.0	5.1	4.6	4.7	3.9
40	8.2	9.5	9.0	9.7	9.8	11.5	9.0	8.2	6.4	6.3	6.3	5.6
60	6.1	9.3	8.5	9.3	9.1	11.0	8.6	8.2	6.6	7.6	7.9	6.9
80	6.0	7.1	7.9	8.7	8.7	10.2	8.0	7.6	6.4	7.3	7.2	6.7
90	5.5	5.4	8.0	8.5	8.2	9.9	7.7	7.0	6.2	7.0	6.9	6.5
100	5.0	4.5	8.1	8.1	7.9	9.5	7.2	6.5	5.7	6.6	6.4	6.0
110	4.4	3.5	7.6	7.6	7.2	8.8	6.6	5.8	5.1	5.6	5.8	5.0
120	3.0	3.5	6.6	6.1	6.6	7.6	5.6	4.9	4.0	3.6	4.2	3.8
130	1.6	1.2	5.8	5.3	5.5	5.4	3.0	2.5	0.0	0.5	0.1	2.2
135	0.6	2.0	5.6	5.5	3.3	3.4	0.1	0.0	0.0	0.3	0.0	0.9

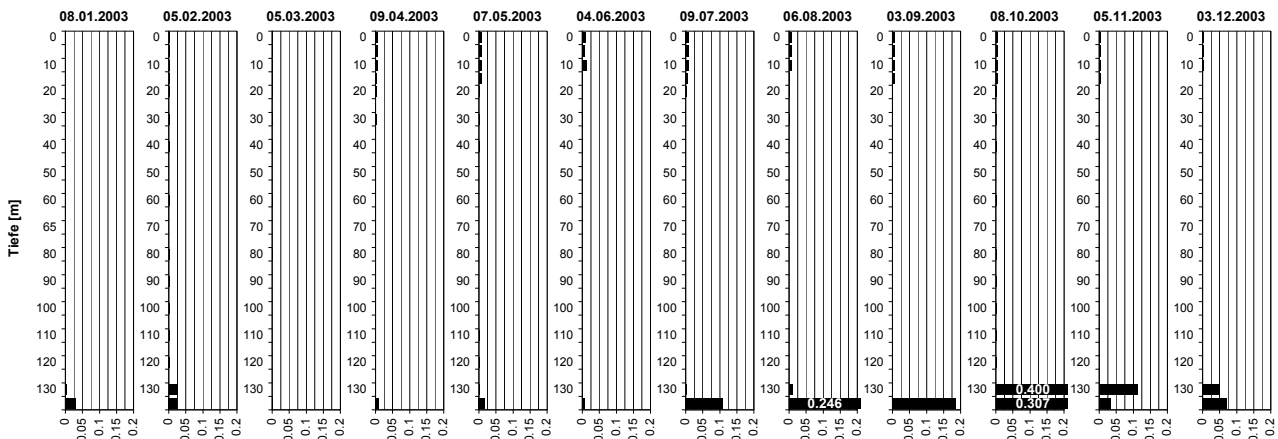
## Tiefenprofile Zürichsee 2003

### Ammonium [mg NH<sub>4</sub>-N/l]



Tiefe [m]	08.01.2003 NH <sub>4</sub> -N [mg N/l]	05.02.2003 NH <sub>4</sub> -N [mg N/l]	05.03.2003 NH <sub>4</sub> -N [mg N/l]	09.04.2003 NH <sub>4</sub> -N [mg N/l]	07.05.2003 NH <sub>4</sub> -N [mg N/l]	04.06.2003 NH <sub>4</sub> -N [mg N/l]	09.07.2003 NH <sub>4</sub> -N [mg N/l]	06.08.2003 NH <sub>4</sub> -N [mg N/l]	03.09.2003 NH <sub>4</sub> -N [mg N/l]	08.10.2003 NH <sub>4</sub> -N [mg N/l]	05.11.2003 NH <sub>4</sub> -N [mg N/l]	03.12.2003 NH <sub>4</sub> -N [mg N/l]
0	0.00	0.00	0.00	0.01	0.04	0.01	0.00	0.01	0.00	0.02	0.00	0.01
5	0.00	0.00	0.00	0.01	0.04	0.01	0.00	0.00	0.00	0.01	0.00	0.01
10	0.00	0.00	0.00	0.01	0.03	0.03	0.00	0.01	0.00	0.01	0.00	0.01
15	0.00	0.00	0.00	0.01	0.02	0.00	0.00	0.00	0.01	0.00	0.00	0.00
20	0.00	0.00	0.00	0.01	0.00	0.00	0.00	0.00	0.00	0.00	0.00	0.00
30	0.00	0.00	0.00	0.00	0.00	0.00	0.00	0.00	0.00	0.00	0.00	0.00
40	0.00	0.00	0.00	0.00	0.00	0.00	0.00	0.00	0.01	0.00	0.00	0.00
60	0.00	0.00	0.00	0.00	0.00	0.00	0.00	0.00	0.00	0.00	0.00	0.00
80	0.00	0.00	0.00	0.00	0.00	0.00	0.00	0.00	0.00	0.00	0.00	0.00
90	0.00	0.00	0.00	0.00	0.00	0.00	0.00	0.00	0.00	0.00	0.00	0.00
100	0.00	0.00	0.00	0.00	0.00	0.00	0.00	0.00	0.00	0.00	0.00	0.00
110	0.00	0.00	0.00	0.00	0.00	0.00	0.00	0.00	0.00	0.00	0.00	0.00
120	0.00	0.01	0.00	0.00	0.00	0.00	0.00	0.00	0.00	0.00	0.00	0.00
130	0.02	0.08	0.00	0.00	0.00	0.00	0.01	0.04	0.00	0.23	0.23	0.17
135	0.10	0.07	0.00	0.05	0.15	0.06	0.24	0.34	0.39	0.19	0.51	0.30

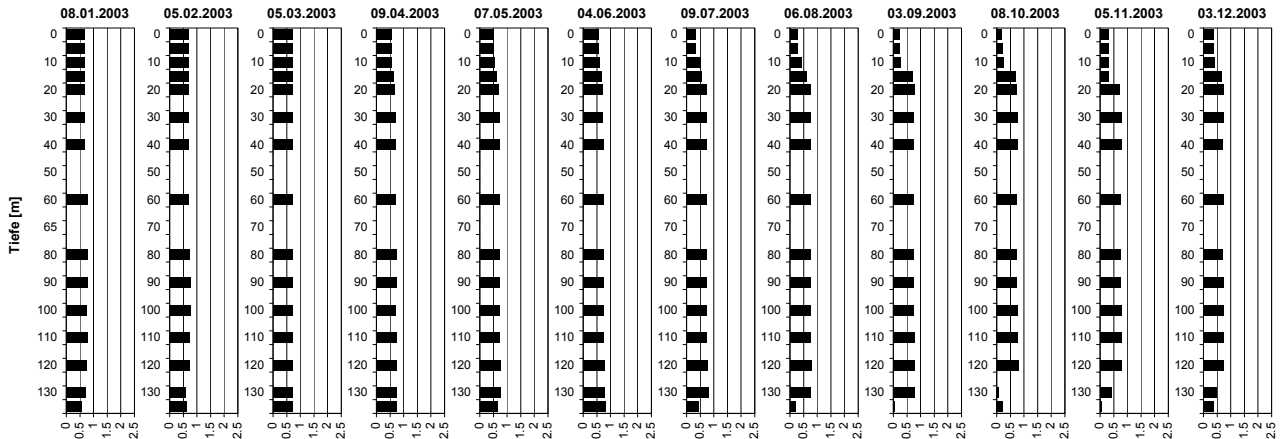
### Nitrit [mg NO<sub>2</sub>-N/l]



Tiefe [m]	08.01.2003 NO <sub>2</sub> -N [mg N/l]	05.02.2003 NO <sub>2</sub> -N [mg N/l]	05.03.2003 NO <sub>2</sub> -N [mg N/l]	09.04.2003 NO <sub>2</sub> -N [mg N/l]	07.05.2003 NO <sub>2</sub> -N [mg N/l]	04.06.2003 NO <sub>2</sub> -N [mg N/l]	09.07.2003 NO <sub>2</sub> -N [mg N/l]	06.08.2003 NO <sub>2</sub> -N [mg N/l]	03.09.2003 NO <sub>2</sub> -N [mg N/l]	08.10.2003 NO <sub>2</sub> -N [mg N/l]	05.11.2003 NO <sub>2</sub> -N [mg N/l]	03.12.2003 NO <sub>2</sub> -N [mg N/l]
0	0.001	0.002	0.001	0.005	0.007	0.009	0.008	0.006	0.006	0.005	0.004	0.002
5	0.001	0.002	0.001	0.005	0.007	0.008	0.008	0.006	0.006	0.005	0.004	0.002
10	0.001	0.001	0.001	0.005	0.008	0.012	0.008	0.008	0.006	0.006	0.004	0.002
15	0.001	0.002	0.001	0.004	0.007	0.001	0.004	0.002	0.005	0.004	0.004	0.000
20	0.001	0.002	0.001	0.004	0.001	0.001	0.001	0.002	0.002	0.003	0.001	0.000
30	0.001	0.001	0.001	0.003	0.001	0.001	0.000	0.001	0.001	0.001	0.000	0.000
40	0.001	0.001	0.001	0.001	0.000	0.001	0.000	0.000	0.000	0.001	0.000	0.000
60	0.000	0.001	0.001	0.001	0.000	0.000	0.000	0.000	0.000	0.001	0.000	0.000
80	0.000	0.001	0.001	0.000	0.000	0.000	0.000	0.000	0.000	0.001	0.000	0.000
90	0.000	0.001	0.000	0.001	0.000	0.000	0.000	0.000	0.000	0.001	0.000	0.000
100	0.000	0.001	0.000	0.001	0.000	0.000	0.000	0.000	0.000	0.000	0.000	0.000
110	0.000	0.001	0.000	0.000	0.001	0.000	0.000	0.000	0.000	0.001	0.000	0.000
120	0.001	0.003	0.000	0.000	0.000	0.000	0.000	0.000	0.000	0.001	0.000	0.000
130	0.003	0.026	0.000	0.001	0.001	0.001	0.002	0.009	0.000	0.400	0.111	0.049
135	0.030	0.023	0.001	0.008	0.017	0.005	0.109	0.246	0.185	0.307	0.032	0.070

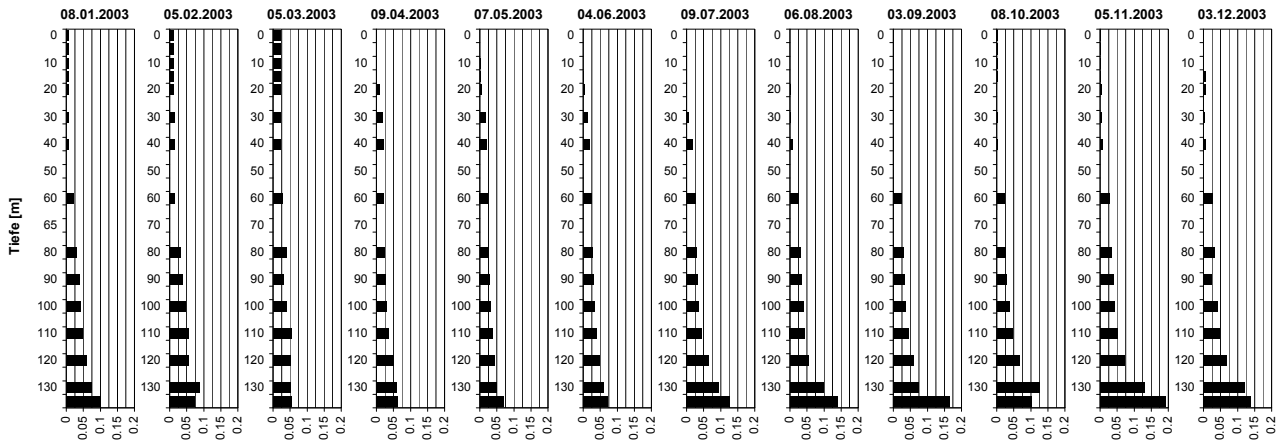
# Tiefenprofile Zürichsee 2003

## Nitrat [mg NO<sub>3</sub>-N/l]



Tiefe [m]	08.01.2003 NO <sub>3</sub> -N [mg N/l]	05.02.2003 NO <sub>3</sub> -N [mg N/l]	05.03.2003 NO <sub>3</sub> -N [mg N/l]	09.04.2003 NO <sub>3</sub> -N [mg N/l]	07.05.2003 NO <sub>3</sub> -N [mg N/l]	04.06.2003 NO <sub>3</sub> -N [mg N/l]	09.07.2003 NO <sub>3</sub> -N [mg N/l]	06.08.2003 NO <sub>3</sub> -N [mg N/l]	03.09.2003 NO <sub>3</sub> -N [mg N/l]	08.10.2003 NO <sub>3</sub> -N [mg N/l]	05.11.2003 NO <sub>3</sub> -N [mg N/l]	03.12.2003 NO <sub>3</sub> -N [mg N/l]
0	-	0.70	0.69	0.54	0.49	0.54	0.33	0.27	0.24	0.18	0.29	0.38
5	0.67	0.70	0.69	0.54	0.49	0.55	0.33	0.27	0.23	0.20	0.29	0.39
10	0.67	0.69	0.69	0.57	0.51	0.57	0.51	0.42	0.24	0.25	0.29	0.39
15	0.67	0.70	0.69	0.64	0.59	0.68	0.56	0.60	0.70	0.67	0.30	0.66
20	0.67	0.70	0.69	0.67	0.67	0.70	0.71	0.73	0.76	0.73	0.71	0.75
30	0.67	0.69	0.69	0.71	0.70	0.72	0.72	0.74	0.76	0.77	0.78	0.75
40	0.68	0.69	0.69	0.72	0.72	0.73	0.73	0.74	0.74	0.75	0.76	0.72
60	0.76	0.70	0.70	0.72	0.72	0.75	0.73	0.74	0.75	0.74	0.76	0.73
80	0.77	0.71	0.70	0.73	0.72	0.74	0.74	0.74	0.75	0.73	0.75	0.72
90	0.76	0.76	0.69	0.72	0.73	0.75	0.74	0.75	0.75	0.73	0.76	0.75
100	0.76	0.75	0.69	0.72	0.73	0.74	0.74	0.75	0.75	0.75	0.76	0.74
110	0.76	0.74	0.69	0.73	0.73	0.75	0.75	0.75	0.76	0.76	0.78	0.74
120	0.74	0.73	0.69	0.74	0.73	0.76	0.76	0.76	0.78	0.79	0.79	0.74
130	0.71	0.60	0.69	0.75	0.74	0.79	0.82	0.76	0.79	0.08	0.40	0.50
135	0.57	0.61	0.69	0.72	0.64	0.80	0.43	0.18	0.06	0.21	0.06	0.37

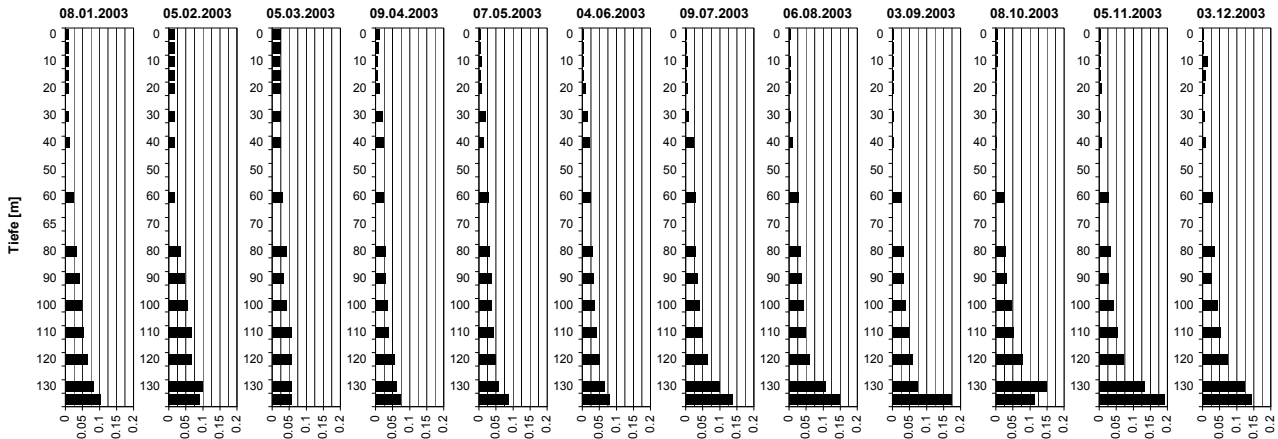
## Phosphat [mg PO<sub>4</sub>-P/l]



Tiefe [m]	08.01.2003 PO <sub>4</sub> -P [mg P/l]	05.02.2003 PO <sub>4</sub> -P [mg P/l]	05.03.2003 PO <sub>4</sub> -P [mg P/l]	09.04.2003 PO <sub>4</sub> -P [mg P/l]	07.05.2003 PO <sub>4</sub> -P [mg P/l]	04.06.2003 PO <sub>4</sub> -P [mg P/l]	09.07.2003 PO <sub>4</sub> -P [mg P/l]	06.08.2003 PO <sub>4</sub> -P [mg P/l]	03.09.2003 PO <sub>4</sub> -P [mg P/l]	08.10.2003 PO <sub>4</sub> -P [mg P/l]	05.11.2003 PO <sub>4</sub> -P [mg P/l]	03.12.2003 PO <sub>4</sub> -P [mg P/l]
0	0.006	0.012	0.021	0.002	0.000	0.000	0.001	0.000	0.001	0.003	0.001	0.000
5	0.006	0.012	0.020	0.001	0.000	0.000	0.001	0.000	0.001	0.002	0.001	0.001
10	0.006	0.012	0.020	0.001	0.001	0.000	0.001	0.000	0.001	0.001	0.002	0.000
15	0.006	0.013	0.020	0.002	0.001	0.001	0.001	0.000	0.001	0.001	0.001	0.007
20	0.006	0.012	0.020	0.008	0.004	0.004	0.001	0.001	0.001	0.000	0.005	0.005
30	0.007	0.013	0.021	0.017	0.016	0.013	0.005	0.001	0.001	0.001	0.004	0.004
40	0.008	0.013	0.021	0.021	0.019	0.019	0.019	0.007	0.002	0.001	0.006	0.008
60	0.022	0.014	0.027	0.020	0.022	0.023	0.026	0.024	0.025	0.022	0.026	0.028
80	0.031	0.031	0.039	0.024	0.024	0.028	0.028	0.030	0.031	0.026	0.032	0.032
90	0.037	0.039	0.031	0.026	0.029	0.031	0.032	0.033	0.033	0.027	0.038	0.026
100	0.041	0.047	0.038	0.030	0.032	0.033	0.035	0.038	0.037	0.037	0.043	0.042
110	0.048	0.057	0.053	0.035	0.036	0.040	0.046	0.043	0.045	0.045	0.051	0.049
120	0.060	0.056	0.052	0.051	0.043	0.046	0.066	0.055	0.059	0.068	0.072	0.068
130	0.075	0.087	0.052	0.058	0.048	0.059	0.093	0.098	0.073	0.127	0.129	0.120
135	0.100	0.074	0.053	0.062	0.068	0.073	0.125	0.138	0.164	0.100	0.191	0.139

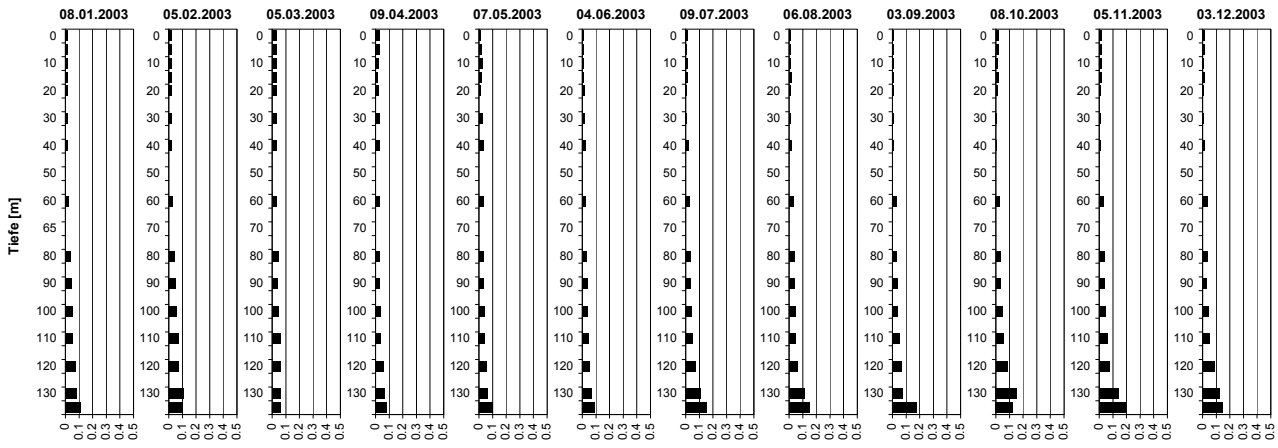
# Tiefenprofile Zürichsee 2003

## Gelöster Phosphor [mg P/l]



Tiefe [m]	08.01.2003 P-gel [mg P/l]	05.02.2003 P-gel [mg P/l]	05.03.2003 P-gel [mg P/l]	09.04.2003 P-gel [mg P/l]	07.05.2003 P-gel [mg P/l]	04.06.2003 P-gel [mg P/l]	09.07.2003 P-gel [mg P/l]	06.08.2003 P-gel [mg P/l]	03.09.2003 P-gel [mg P/l]	08.10.2003 P-gel [mg P/l]	05.11.2003 P-gel [mg P/l]	03.12.2003 P-gel [mg P/l]
0	0.010	0.016	0.023	0.011	0.004	0.004	0.004	0.003	0.003	0.006	0.004	0.003
5	0.009	0.015	0.023	0.010	0.004	0.005	0.004	0.002	0.004	0.006	0.004	0.003
10	0.010	0.016	0.021	0.006	0.006	0.005	0.006	0.003	0.004	0.004	0.003	0.014
15	0.008	0.016	0.023	0.006	0.005	0.004	0.004	0.003	0.003	0.003	0.003	0.008
20	0.009	0.016	0.023	0.013	0.007	0.009	0.005	0.003	0.004	0.002	0.006	0.006
30	0.009	0.016	0.023	0.021	0.018	0.014	0.008	0.004	0.003	0.002	0.004	0.006
40	0.011	0.017	0.023	0.024	0.013	0.021	0.023	0.010	0.003	0.002	0.006	0.009
60	0.024	0.017	0.030	0.024	0.026	0.025	0.028	0.027	0.026	0.025	0.028	0.031
80	0.033	0.033	0.042	0.028	0.029	0.031	0.030	0.032	0.033	0.029	0.033	0.034
90	0.040	0.046	0.034	0.029	0.035	0.032	0.036	0.036	0.034	0.030	0.028	0.026
100	0.046	0.055	0.042	0.035	0.036	0.036	0.040	0.041	0.039	0.044	0.043	0.043
110	0.053	0.066	0.056	0.039	0.043	0.043	0.050	0.047	0.047	0.053	0.052	0.052
120	0.066	0.067	0.056	0.056	0.049	0.050	0.064	0.058	0.060	0.078	0.070	0.073
130	0.081	0.099	0.056	0.063	0.055	0.000	0.098	0.106	0.075	0.147	0.132	0.124
135	0.105	0.091	0.055	0.073	0.086	0.043	0.136	0.148	0.173	0.112	0.191	0.145

## Gesamt-Phosphor [mg P/l]



Tiefe [m]	08.01.2003 P-tot [mg P/l]	05.02.2003 P-tot [mg P/l]	05.03.2003 P-tot [mg P/l]	09.04.2003 P-tot [mg P/l]	07.05.2003 P-tot [mg P/l]	04.06.2003 P-tot [mg P/l]	09.07.2003 P-tot [mg P/l]	06.08.2003 P-tot [mg P/l]	03.09.2003 P-tot [mg P/l]	08.10.2003 P-tot [mg P/l]	05.11.2003 P-tot [mg P/l]	03.12.2003 P-tot [mg P/l]
0	0.016	0.021	0.031	0.034	0.012	0.009	0.015	0.006	0.011	0.018	0.016	0.015
5	0.015	0.022	0.029	0.034	0.014	0.011	0.009	0.007	0.011	0.016	0.019	0.015
10	0.016	0.022	0.029	0.024	0.024	0.011	0.014	0.012	0.011	0.015	0.016	0.004
15	0.016	0.022	0.029	0.018	0.016	0.010	0.015	0.016	0.012	0.016	0.016	0.013
20	0.016	0.022	0.029	0.023	0.012	0.013	0.006	0.009	0.011	0.012	0.012	0.009
30	0.016	0.022	0.028	0.028	0.022	0.016	0.010	0.010	0.007	0.006	0.010	0.008
40	0.016	0.022	0.032	0.030	0.028	0.023	0.023	0.014	0.006	0.005	0.007	0.011
60	0.025	0.023	0.034	0.029	0.028	0.026	0.030	0.032	0.029	0.027	0.028	0.032
80	0.035	0.037	0.046	0.031	0.029	0.032	0.034	0.035	0.033	0.034	0.036	0.035
90	0.045	0.049	0.039	0.032	0.030	0.035	0.038	0.038	0.036	0.034	0.041	0.026
100	0.049	0.055	0.046	0.038	0.038	0.040	0.043	0.043	0.041	0.047	0.046	0.046
110	0.055	0.070	0.059	0.041	0.043	0.044	0.052	0.048	0.049	0.054	0.056	0.053
120	0.073	0.072	0.059	0.058	0.053	0.052	0.074	0.061	0.065	0.084	0.076	0.086
130	0.084	0.106	0.060	0.068	0.059	0.070	0.110	0.112	0.078	0.153	0.142	0.124
135	0.113	0.098	0.059	0.081	0.096	0.088	0.149	0.148	0.181	0.124	0.194	0.145