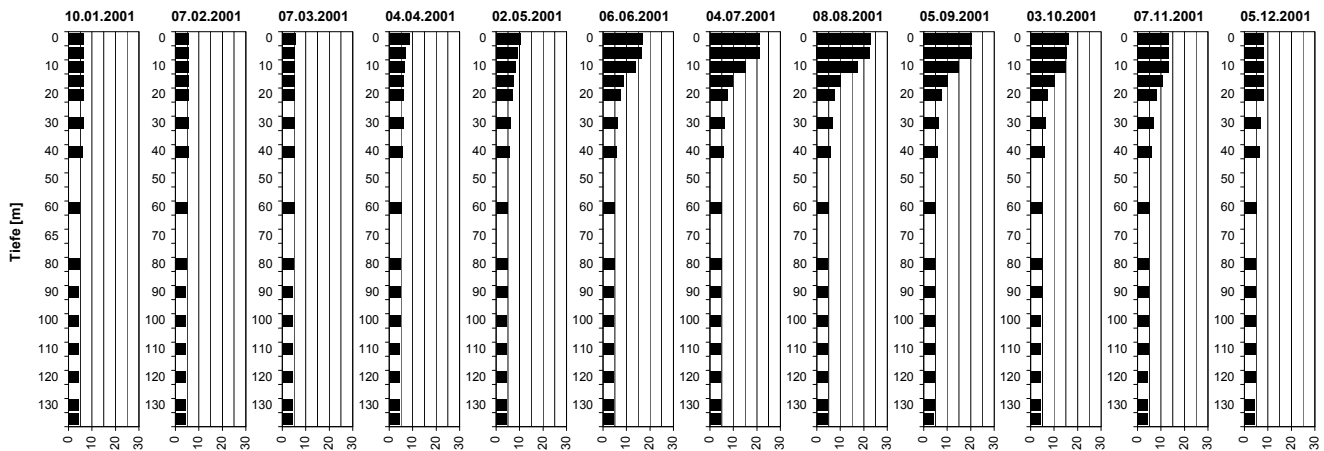
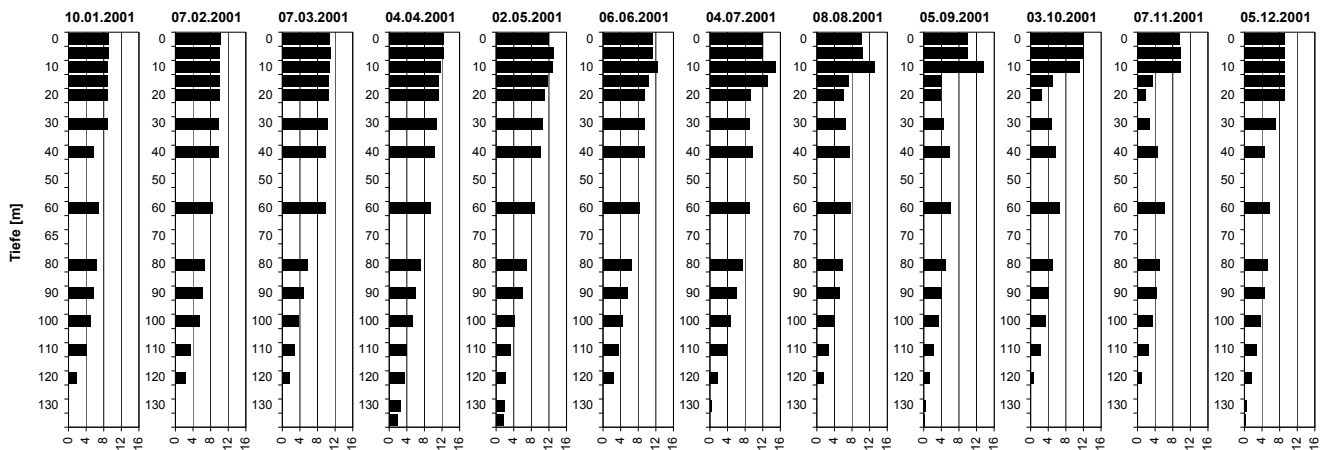


## Temperatur [°C]



Tiefe [m]	10.01.2001 Temp [°C]	07.02.2001 Temp [°C]	07.03.2001 Temp [°C]	04.04.2001 Temp [°C]	02.05.2001 Temp [°C]	06.06.2001 Temp [°C]	04.07.2001 Temp [°C]	08.08.2001 Temp [°C]	05.09.2001 Temp [°C]	03.10.2001 Temp [°C]	07.11.2001 Temp [°C]	05.12.2001 Temp [°C]
0.0	6.4	5.5	5.7	8.6	10.4	16.7	21.0	22.6	20.5	16.1	13.2	8.2
5.0	6.4	5.5	5.3	7.0	8.9	16.4	20.9	22.5	20.5	15.4	13.2	8.2
10.0	6.4	5.4	5.2	6.3	8.2	13.9	14.8	17.3	14.6	15.0	13.2	8.1
15.0	6.4	5.4	5.2	6.2	7.2	8.6	9.5	9.9	10.1	10.1	10.8	8.1
20.0	6.4	5.4	5.2	6.2	6.8	7.3	7.3	7.3	7.5	7.3	8.1	8.1
30.0	6.4	5.4	5.2	5.8	5.8	6.2	6.2	6.4	6.4	6.3	6.8	7.1
40.0	5.8	5.4	5.1	5.4	5.4	5.6	5.6	5.7	5.8	5.9	6.2	6.4
60.0	4.9	5.0	5.1	5.1	4.9	4.9	4.9	4.9	4.9	4.9	5.2	5.3
80.0	4.6	4.6	4.7	4.8	4.7	4.6	4.7	4.6	4.5	4.6	4.9	4.9
90.0	4.5	4.5	4.5	4.6	4.6	4.5	4.5	4.5	4.5	4.5	4.7	4.8
100.0	4.5	4.5	4.5	4.6	4.4	4.4	4.4	4.4	4.4	4.4	4.7	4.7
110.0	4.5	4.5	4.5	4.5	4.4	4.3	4.4	4.3	4.3	4.3	4.6	4.6
120.0	4.4	4.4	4.4	4.5	4.3	4.3	4.3	4.3	4.3	4.3	4.5	4.6
130.0	4.5	4.4	4.4	4.5	4.3	4.3	4.3	4.3	4.3	4.2	4.5	4.5
135.0	4.5	4.4	4.4	4.5	4.3	4.3	4.3	4.3	4.2	4.2	4.5	4.5

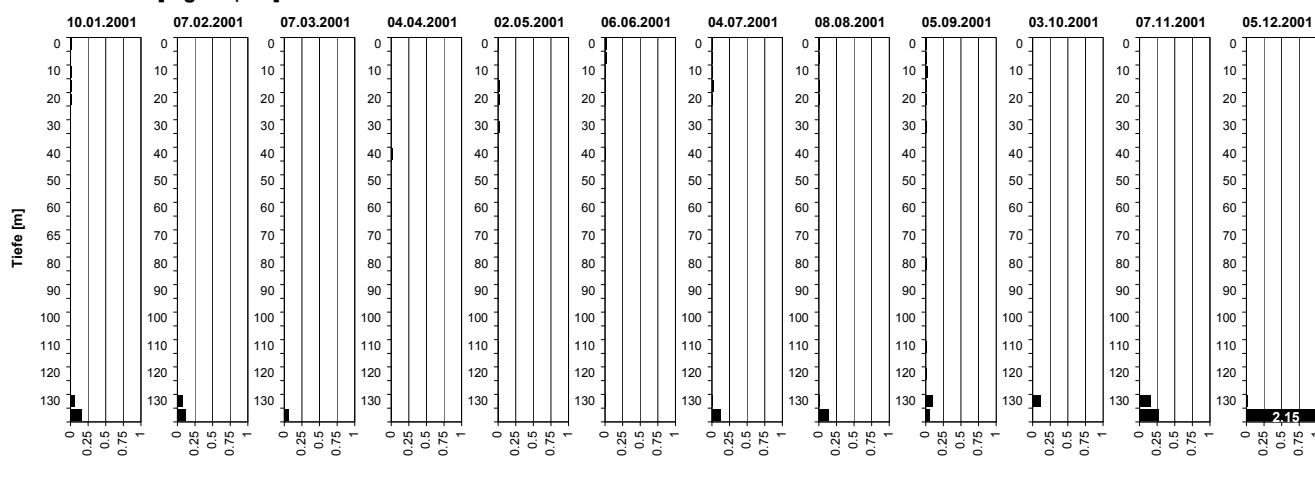
## Sauerstoff [mg O<sub>2</sub>/l]



Tiefe [m]	10.01.2001 O2 [mg O <sub>2</sub> /l]	07.02.2001 O2 [mg O <sub>2</sub> /l]	07.03.2001 O2 [mg O <sub>2</sub> /l]	04.04.2001 O2 [mg O <sub>2</sub> /l]	02.05.2001 O2 [mg O <sub>2</sub> /l]	06.06.2001 O2 [mg O <sub>2</sub> /l]	04.07.2001 O2 [mg O <sub>2</sub> /l]	08.08.2001 O2 [mg O <sub>2</sub> /l]	05.09.2001 O2 [mg O <sub>2</sub> /l]	03.10.2001 O2 [mg O <sub>2</sub> /l]	07.11.2001 O2 [mg O <sub>2</sub> /l]	05.12.2001 O2 [mg O <sub>2</sub> /l]
0.0	9.0	10.2	10.6	12.2	11.9	11.2	11.8	10.1	10.1	12.0	9.7	9.3
5.0	9.0	10.1	10.9	12.3	13.0	11.3	11.8	10.2	10.1	12.0	9.8	9.2
10.0	8.9	10.1	10.7	11.5	12.7	12.3	14.8	13.1	13.5	11.1	9.9	9.2
15.0	8.9	10.1	10.5	11.1	11.7	10.2	13.1	7.1	4.1	4.9	3.5	9.2
20.0	8.9	10.0	10.5	11.1	11.0	9.5	9.1	6.0	3.8	2.5	1.8	9.2
30.0	8.8	9.9	10.3	10.7	10.6	9.4	8.9	6.5	4.5	4.7	2.7	7.0
40.0	5.8	9.9	9.9	10.2	10.1	9.4	9.6	7.4	5.8	5.7	4.7	4.7
60.0	6.9	8.3	9.9	9.4	8.6	8.3	9.0	7.7	6.1	6.5	6.3	5.8
80.0	6.5	6.6	5.8	7.1	6.8	6.3	7.3	5.8	5.0	4.9	5.1	5.2
90.0	5.8	6.1	4.8	5.9	6.0	5.6	6.0	5.0	4.1	4.0	4.3	4.6
100.0	4.9	5.6	3.7	5.1	4.0	4.3	4.7	4.0	3.2	3.3	3.4	3.8
110.0	4.1	3.4	2.8	4.0	3.3	3.5	3.7	2.5	2.2	2.3	2.5	2.7
120.0	1.9	2.3	1.7	3.5	2.1	2.2	1.8	1.5	1.3	0.6	1.0	1.6
130.0	0.1	0.0	0.1	2.5	1.7	0.0	0.2	0.0	0.4	0.0	0.0	0.5
135.0	0.0	0.0	0.0	1.9	1.5	0.0	0.0	0.0	0.1	0.0	0.0	0.3

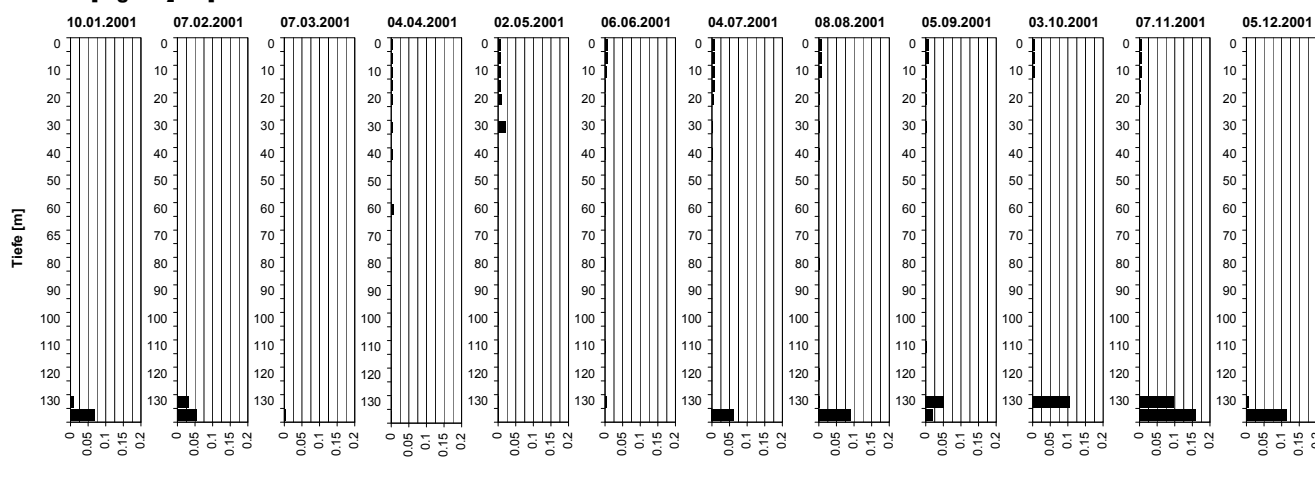
## Tiefenprofile Zürichsee 2001

### Ammonium [mg NH<sub>4</sub>-N/l]



Tiefe [m]	10.01.2001 NH4-N [mg N/l]	07.02.2001 NH4-N [mg N/l]	07.03.2001 NH4-N [mg N/l]	04.04.2001 NH4-N [mg N/l]	02.05.2001 NH4-N [mg N/l]	06.06.2001 NH4-N [mg N/l]	04.07.2001 NH4-N [mg N/l]	08.08.2001 NH4-N [mg N/l]	05.09.2001 NH4-N [mg N/l]	03.10.2001 NH4-N [mg N/l]	07.11.2001 NH4-N [mg N/l]	05.12.2001 NH4-N [mg N/l]
0.0	0.01	0.00	0.00	0.00	0.00	0.01	0.01	0.01	0.01	0.00	0.00	0.00
5.0	0.01	0.00	0.00	0.00	0.00	0.01	0.01	0.01	0.01	0.00	0.00	0.00
10.0	0.01	0.00	0.00	0.00	0.00	0.01	0.00	0.00	0.02	0.00	0.00	0.00
15.0	0.01	0.00	0.00	0.00	0.02	0.01	0.02	0.00	0.01	0.00	0.00	0.00
20.0	0.01	0.00	0.00	0.00	0.02	0.00	0.00	0.00	0.01	0.00	0.01	0.00
30.0	0.00	0.00	0.00	0.01	0.02	0.00	0.00	0.00	0.00	0.00	0.00	0.00
40.0	0.00	0.00	0.00	0.01	0.00	0.01	0.00	0.00	0.00	0.00	0.00	0.00
60.0	0.00	0.00	0.00	0.01	0.00	0.00	0.00	0.00	0.00	0.00	0.00	0.00
80.0	0.00	0.00	0.00	0.00	0.00	0.00	0.00	0.00	0.00	0.00	0.00	0.00
90.0	0.00	0.00	0.00	0.00	0.00	0.00	0.00	0.00	0.00	-	0.00	0.00
100.0	0.00	0.00	0.00	0.00	0.00	0.00	0.00	0.00	0.00	0.00	0.00	0.00
110.0	0.00	0.00	0.00	0.00	0.00	0.00	0.00	0.00	0.00	-	0.00	0.00
120.0	0.00	0.00	0.00	0.00	0.00	0.00	0.00	0.00	0.00	0.00	-	0.01
130.0	0.06	0.08	0.00	0.00	0.01	0.01	0.00	0.01	0.10	0.12	0.16	0.02
135.0	0.16	0.11	0.05	0.01	0.01	-	0.11	0.13	0.05	-	0.27	2.15

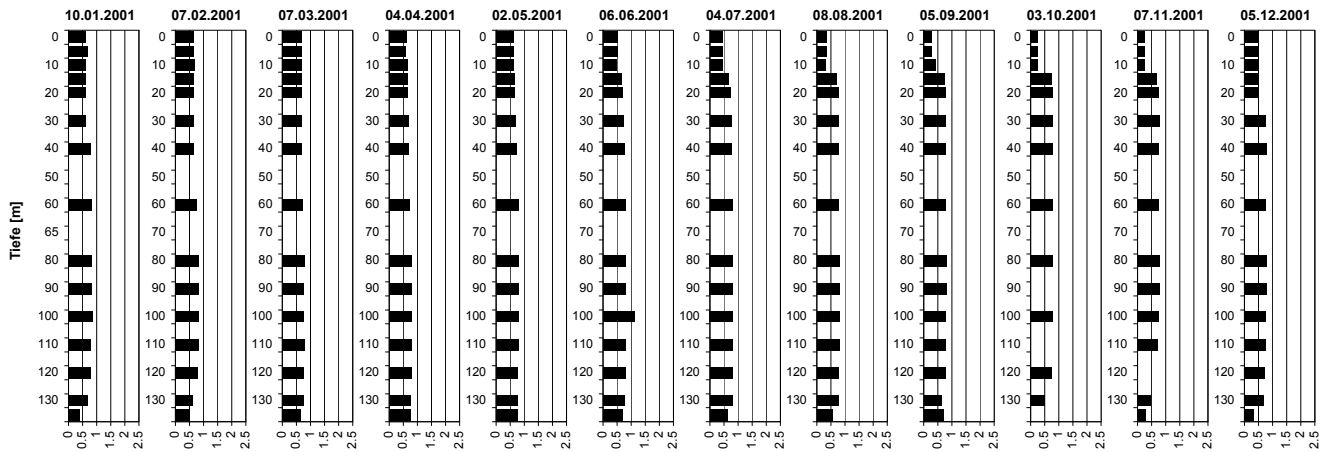
### Nitrit [mg NO<sub>2</sub>-N/l]



Tiefe [m]	10.01.2001 NO2-N [mg N/l]	07.02.2001 NO2-N [mg N/l]	07.03.2001 NO2-N [mg N/l]	04.04.2001 NO2-N [mg N/l]	02.05.2001 NO2-N [mg N/l]	06.06.2001 NO2-N [mg N/l]	04.07.2001 NO2-N [mg N/l]	08.08.2001 NO2-N [mg N/l]	05.09.2001 NO2-N [mg N/l]	03.10.2001 NO2-N [mg N/l]	07.11.2001 NO2-N [mg N/l]	05.12.2001 NO2-N [mg N/l]
0.0	0.001	0.002	0.002	0.005	0.005	0.006	0.008	0.007	0.006	0.007	0.006	0.001
5.0	0.001	0.002	0.002	0.004	0.006	0.006	0.008	0.007	0.006	0.007	0.005	0.001
10.0	0.001	0.002	0.002	0.003	0.006	0.005	0.007	0.006	0.003	0.006	0.005	0.001
15.0	0.001	0.002	0.002	0.003	0.006	0.002	0.008	0.001	0.003	0.001	0.003	0.001
20.0	0.001	0.002	0.002	0.003	0.010	0.002	0.002	0.002	0.002	0.001	0.002	0.001
30.0	0.001	0.002	0.002	0.003	0.020	0.001	0.001	0.001	0.001	0.000	0.001	0.001
40.0	0.001	0.002	0.001	0.004	0.001	0.001	0.000	0.001	0.000	0.000	0.001	0.000
60.0	0.000	0.001	0.001	0.006	0.001	0.001	0.000	0.000	0.000	0.000	0.000	0.001
80.0	0.000	0.001	0.001	0.001	0.000	0.001	0.000	0.000	0.000	0.000	0.000	0.001
90.0	0.000	0.001	0.001	0.001	0.000	0.000	0.000	0.000	0.000	-	0.000	0.000
100.0	0.000	0.001	0.001	0.000	0.001	0.000	0.000	0.000	0.000	0.000	0.001	0.000
110.0	0.001	0.001	0.001	0.000	0.001	0.000	0.000	0.000	0.001	-	0.000	0.001
120.0	0.001	0.001	0.001	0.000	0.000	0.000	0.000	0.001	0.000	0.001	-	0.002
130.0	0.009	0.031	0.001	0.001	0.002	0.003	0.000	0.002	0.051	0.103	0.096	0.006
135.0	0.069	0.055	0.005	0.001	0.002	-	0.062	0.090	0.020	-	0.159	0.115

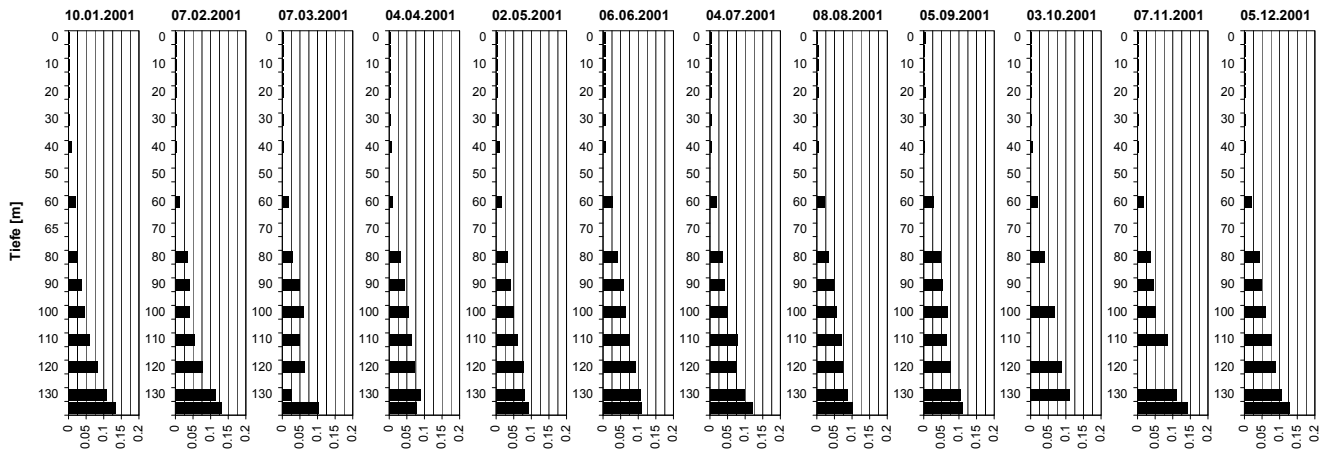
## Tiefenprofile Zürichsee 2001

### Nitrat [mg NO<sub>3</sub>-N/l]



Tiefe [m]	10.01.2001 NO <sub>3</sub> -N [mg N/l]	07.02.2001 NO <sub>3</sub> -N [mg N/l]	07.03.2001 NO <sub>3</sub> -N [mg N/l]	04.04.2001 NO <sub>3</sub> -N [mg N/l]	02.05.2001 NO <sub>3</sub> -N [mg N/l]	06.06.2001 NO <sub>3</sub> -N [mg N/l]	04.07.2001 NO <sub>3</sub> -N [mg N/l]	08.08.2001 NO <sub>3</sub> -N [mg N/l]	05.09.2001 NO <sub>3</sub> -N [mg N/l]	03.10.2001 NO <sub>3</sub> -N [mg N/l]	07.11.2001 NO <sub>3</sub> -N [mg N/l]	05.12.2001 NO <sub>3</sub> -N [mg N/l]
0.0	0.6	0.7	0.7	0.6	0.6	0.5	0.4	0.3	0.3	0.2	0.2	0.5
5.0	0.7	0.7	0.7	0.6	0.6	0.5	0.4	0.3	0.3	0.2	0.2	0.5
10.0	0.6	0.7	0.7	0.6	0.6	0.5	0.4	0.3	0.4	0.3	0.2	0.5
15.0	0.6	0.7	0.7	0.6	0.6	0.6	0.7	0.7	0.7	0.8	0.7	0.5
20.0	0.6	0.7	0.7	0.6	0.7	0.7	0.7	0.8	0.8	0.8	0.8	0.5
30.0	0.6	0.6	0.7	0.7	0.7	0.7	0.8	0.8	0.8	0.8	0.8	0.8
40.0	0.8	0.7	0.7	0.7	0.7	0.7	0.8	0.8	0.8	0.8	0.8	0.8
60.0	0.8	0.7	0.7	0.7	0.8	0.8	0.8	0.8	0.8	0.8	0.8	0.8
80.0	0.8	0.8	0.8	0.8	0.8	0.8	0.8	0.8	0.8	0.8	0.8	0.8
90.0	0.8	0.8	0.8	0.8	0.8	0.8	0.8	0.8	0.8	-	0.8	0.8
100.0	0.9	0.8	0.8	0.8	0.8	1.1	0.8	0.8	0.8	0.8	0.7	0.8
110.0	0.8	0.8	0.8	0.8	0.8	0.8	0.8	0.8	0.8	-	0.7	0.8
120.0	0.8	0.8	0.7	0.8	0.8	0.8	0.8	0.8	0.8	0.8	-	0.7
130.0	0.7	0.6	0.7	0.8	0.7	0.7	0.8	0.8	0.6	0.5	0.5	0.7
135.0	0.4	0.5	0.7	0.8	0.7	0.7	0.6	0.5	0.7	-	0.3	0.3

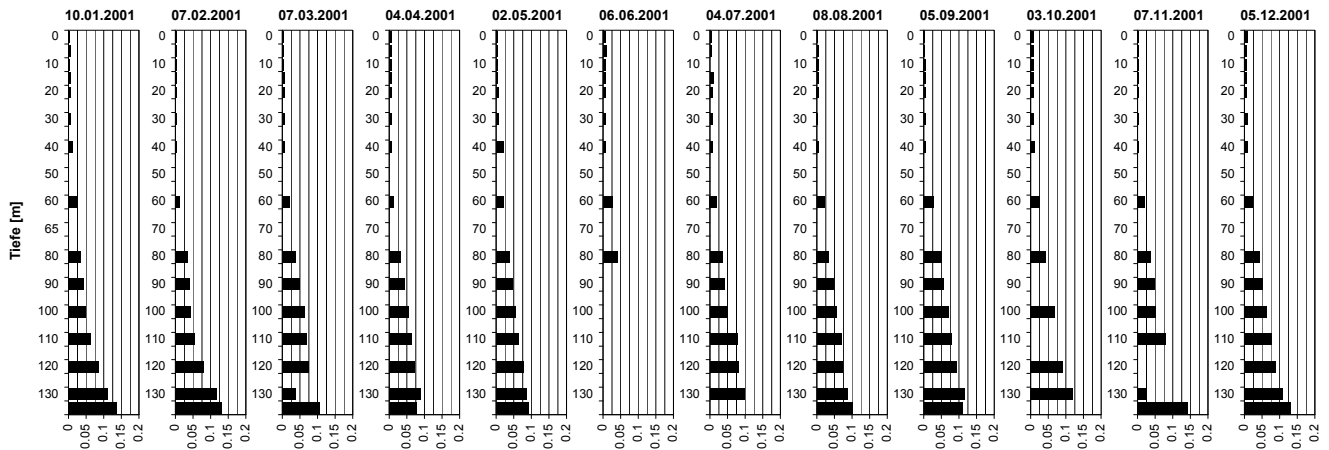
### Phosphat [mg PO<sub>4</sub>-P/l]



Tiefe [m]	10.01.2001 PO <sub>4</sub> -P [mg P/l]	07.02.2001 PO <sub>4</sub> -P [mg P/l]	07.03.2001 PO <sub>4</sub> -P [mg P/l]	04.04.2001 PO <sub>4</sub> -P [mg P/l]	02.05.2001 PO <sub>4</sub> -P [mg P/l]	06.06.2001 PO <sub>4</sub> -P [mg P/l]	04.07.2001 PO <sub>4</sub> -P [mg P/l]	08.08.2001 PO <sub>4</sub> -P [mg P/l]	05.09.2001 PO <sub>4</sub> -P [mg P/l]	03.10.2001 PO <sub>4</sub> -P [mg P/l]	07.11.2001 PO <sub>4</sub> -P [mg P/l]	05.12.2001 PO <sub>4</sub> -P [mg P/l]
0.0	0.003	0.003	0.004	0.004	0.003	0.006	0.003	0.002	0.005	0.004	0.004	0.004
5.0	0.002	0.003	0.003	0.004	0.003	0.005	0.003	0.004	0.003	0.003	0.002	0.003
10.0	0.002	0.003	0.003	0.004	0.003	0.006	0.003	0.004	0.003	0.003	0.003	0.003
15.0	0.002	0.003	0.003	0.003	0.004	0.005	0.004	0.003	0.003	0.003	0.003	0.003
20.0	0.003	0.003	0.003	0.003	0.004	0.006	0.003	0.004	0.004	0.004	0.003	0.003
30.0	0.003	0.003	0.003	0.003	0.006	0.006	0.003	0.003	0.004	0.004	0.003	0.004
40.0	0.008	0.003	0.003	0.005	0.009	0.007	0.004	0.004	0.003	0.005	0.004	0.004
60.0	0.020	0.012	0.016	0.009	0.015	0.026	0.017	0.020	0.026	0.020	0.018	0.019
80.0	0.027	0.034	0.028	0.031	0.032	0.039	0.034	0.034	0.048	0.040	0.037	0.043
90.0	0.038	0.039	0.048	0.044	0.041	0.056	0.041	0.045	0.053	-	0.045	0.050
100.0	0.045	0.039	0.060	0.055	0.049	0.062	0.048	0.056	0.066	0.067	0.050	0.060
110.0	0.059	0.055	0.048	0.063	0.061	0.075	0.076	0.068	0.064	-	0.085	0.076
120.0	0.084	0.076	0.062	0.072	0.078	0.090	0.074	0.072	0.076	0.088	-	0.087
130.0	0.107	0.113	0.027	0.087	0.079	0.106	0.097	0.086	0.104	0.111	0.112	0.106
135.0	0.133	0.131	0.103	0.078	0.091	0.107	0.121	0.100	0.109	-	0.142	0.128

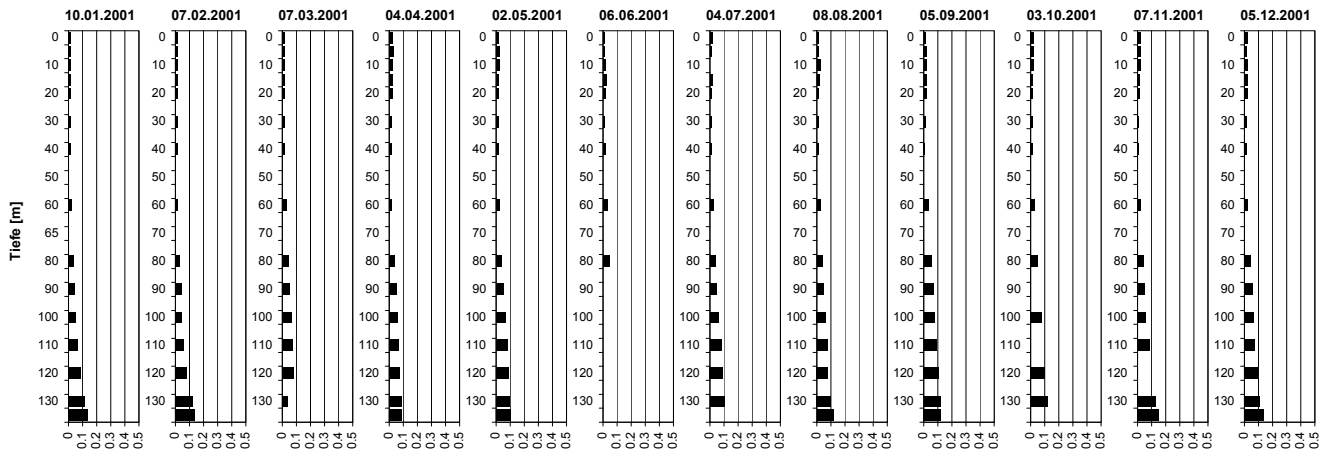
## Tiefenprofile Zürichsee 2001

### Gelöster Phosphor [mg P/l]



Tiefe [m]	10.01.2001 P-gel [mg P/l]	07.02.2001 P-gel [mg P/l]	07.03.2001 P-gel [mg P/l]	04.04.2001 P-gel [mg P/l]	02.05.2001 P-gel [mg P/l]	06.06.2001 P-gel [mg P/l]	04.07.2001 P-gel [mg P/l]	08.08.2001 P-gel [mg P/l]	05.09.2001 P-gel [mg P/l]	03.10.2001 P-gel [mg P/l]	07.11.2001 P-gel [mg P/l]	05.12.2001 P-gel [mg P/l]
0.0	0.004	0.003	0.004	0.006	0.003	0.005	0.004	0.002	0.003	0.008	0.004	0.010
5.0	0.005	0.003	0.004	0.005	0.004	0.009	0.004	0.004	0.003	0.007	0.003	0.006
10.0	0.004	0.003	0.004	0.005	0.004	0.006	-	0.005	0.005	0.007	0.004	0.007
15.0	0.005	0.003	0.005	0.005	0.004	0.007	0.010	0.004	0.005	0.007	0.004	0.007
20.0	0.005	0.003	0.005	0.005	0.006	0.006	0.006	0.005	0.004	0.008	0.003	0.007
30.0	0.005	0.003	0.005	0.005	0.007	0.006	0.005	0.003	0.004	0.008	0.003	0.008
40.0	0.013	0.003	0.005	0.006	0.019	0.007	0.006	0.005	0.004	0.011	0.004	0.008
60.0	0.024	0.012	0.020	0.011	0.020	0.025	0.019	0.021	0.028	0.025	0.019	0.024
80.0	0.034	0.035	0.038	0.032	0.036	0.041	0.035	0.034	0.050	0.044	0.038	0.044
90.0	0.042	0.039	0.049	0.044	0.047	-	0.041	0.045	0.057	-	0.048	0.052
100.0	0.050	0.044	0.063	0.055	0.055	-	0.048	0.056	0.069	0.067	0.051	0.064
110.0	0.063	0.055	0.068	0.063	0.062	-	0.076	0.068	0.077	-	0.081	0.076
120.0	0.086	0.079	0.075	0.072	0.078	-	0.080	0.073	0.093	0.092	-	0.088
130.0	0.111	0.116	0.036	0.087	0.085	-	0.097	0.086	0.116	0.118	0.023	0.107
135.0	0.135	0.132	0.106	0.078	0.091	-	-	0.100	0.109	-	0.141	0.132

### Gesamt-Phosphor [mg P/l]



Tiefe [m]	10.01.2001 P-tot [mg P/l]	07.02.2001 P-tot [mg P/l]	07.03.2001 P-tot [mg P/l]	04.04.2001 P-tot [mg P/l]	02.05.2001 P-tot [mg P/l]	06.06.2001 P-tot [mg P/l]	04.07.2001 P-tot [mg P/l]	08.08.2001 P-tot [mg P/l]	05.09.2001 P-tot [mg P/l]	03.10.2001 P-tot [mg P/l]	07.11.2001 P-tot [mg P/l]	05.12.2001 P-tot [mg P/l]
0.0	0.018	0.017	0.019	0.022	0.017	0.012	0.014	0.008	0.012	0.020	0.020	0.020
5.0	0.017	0.017	0.019	0.029	0.022	0.011	0.012	0.009	0.021	0.018	0.020	0.019
10.0	0.016	0.016	0.019	0.020	0.021	0.014	-	0.026	0.019	0.019	0.021	0.020
15.0	0.017	0.016	0.018	0.020	0.016	0.021	0.018	0.015	0.015	0.014	0.013	0.020
20.0	0.017	0.015	0.018	0.020	0.015	0.013	0.012	0.011	0.018	0.015	0.012	0.022
30.0	0.015	0.015	0.019	0.019	0.019	0.010	0.010	0.009	0.008	0.012	0.009	0.014
40.0	0.014	0.016	0.018	0.017	0.016	0.013	0.009	0.011	0.007	0.013	0.009	0.013
60.0	0.024	0.018	0.027	0.018	0.025	0.029	0.023	0.023	0.033	0.029	0.023	0.026
80.0	0.035	0.028	0.041	0.037	0.037	0.044	0.039	0.037	0.053	0.050	0.041	0.045
90.0	0.042	0.041	0.052	0.049	0.051	-	0.045	0.045	0.066	-	0.050	0.054
100.0	0.050	0.045	0.066	0.062	0.069	-	0.058	0.064	0.076	0.075	0.058	0.064
110.0	0.063	0.057	0.072	0.063	0.077	-	0.082	0.073	0.089	-	0.086	0.076
120.0	0.087	0.082	0.077	0.072	0.087	-	0.092	0.077	0.104	0.098	-	0.091
130.0	0.113	0.121	0.039	0.087	0.095	-	0.101	0.098	0.116	0.118	0.130	0.107
135.0	0.136	0.133	-	0.088	0.099	-	-	0.118	0.121	-	0.149	0.137