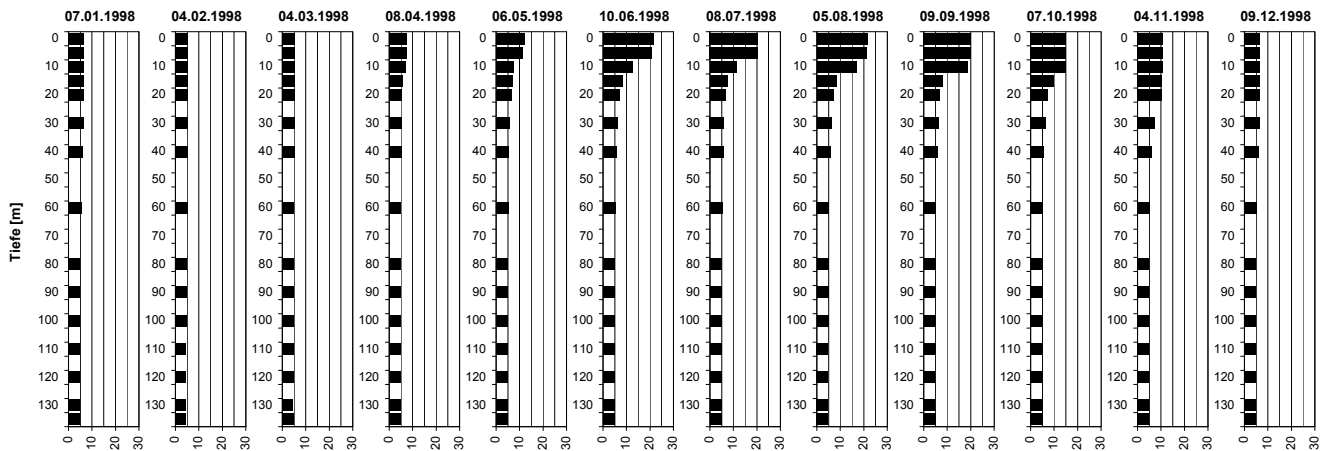
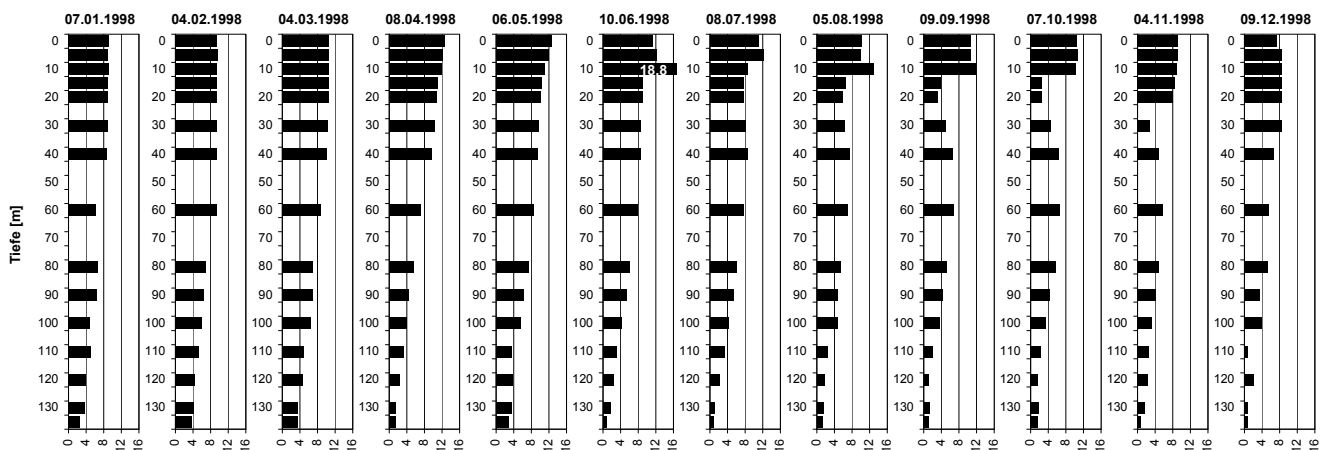


Temperatur [°C]



Tiefe [m]	07.01.1998 Temp [°C]	04.02.1998 Temp [°C]	04.03.1998 Temp [°C]	08.04.1998 Temp [°C]	06.05.1998 Temp [°C]	10.06.1998 Temp [°C]	08.07.1998 Temp [°C]	05.08.1998 Temp [°C]	09.09.1998 Temp [°C]	07.10.1998 Temp [°C]	04.11.1998 Temp [°C]	09.12.1998 Temp [°C]
0.0	6.3	5.1	5.3	7.5	11.9	21.3	20.3	21.4	20.1	14.9	10.7	6.3
5.0	6.3	5.1	5.3	7.4	11.3	20.7	20.3	21.2	20.1	15.0	10.7	6.3
10.0	6.3	5.1	5.3	6.8	7.5	12.4	11.2	16.6	18.6	14.8	10.7	6.3
15.0	6.3	5.1	5.2	5.5	6.9	8.3	7.2	8.5	8.1	9.6	10.3	6.3
20.0	6.3	5.1	5.3	5.3	6.3	6.8	6.5	7.0	6.8	7.1	10.1	6.3
30.0	6.3	5.1	5.1	5.2	5.6	6.1	5.9	6.2	6.2	6.1	7.1	6.3
40.0	6.2	5.1	5.0	5.1	5.2	5.5	5.8	5.6	5.7	5.6	6.1	6.1
60.0	5.5	5.1	4.7	4.8	5.0	5.0	5.0	5.0	5.1	5.0	5.0	5.2
80.0	4.8	4.8	4.7	4.7	4.8	4.9	4.8	4.8	4.9	4.8	4.8	4.8
90.0	4.7	4.6	4.7	4.7	4.7	4.8	4.7	4.8	4.9	4.8	4.7	4.7
100.0	4.6	4.6	4.7	4.7	4.7	4.7	4.7	4.8	4.8	4.7	4.7	4.7
110.0	4.6	4.5	4.6	4.6	4.7	4.7	4.7	4.7	4.8	4.7	4.7	4.7
120.0	4.6	4.5	4.6	4.6	4.7	4.7	4.7	4.7	4.7	4.7	4.7	4.7
130.0	4.6	4.5	4.5	4.6	4.6	4.7	4.7	4.7	4.7	4.7	4.7	4.6
135.0	4.6	4.5	4.6	4.6	4.6	4.7	4.7	4.7	4.8	4.7	4.7	4.6

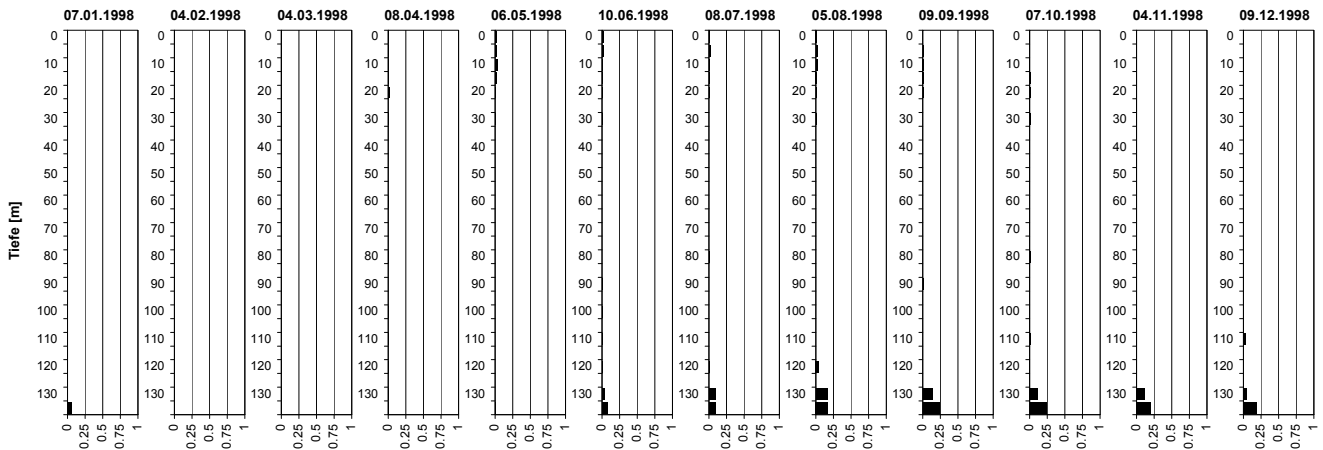
Sauerstoff [mg O₂/l]



Tiefe [m]	07.01.1998 O ₂ [mg O ₂ /l]	04.02.1998 O ₂ [mg O ₂ /l]	04.03.1998 O ₂ [mg O ₂ /l]	08.04.1998 O ₂ [mg O ₂ /l]	06.05.1998 O ₂ [mg O ₂ /l]	10.06.1998 O ₂ [mg O ₂ /l]	08.07.1998 O ₂ [mg O ₂ /l]	05.08.1998 O ₂ [mg O ₂ /l]	09.09.1998 O ₂ [mg O ₂ /l]	07.10.1998 O ₂ [mg O ₂ /l]	04.11.1998 O ₂ [mg O ₂ /l]	09.12.1998 O ₂ [mg O ₂ /l]
0.0	9.1	9.5	10.5	12.6	12.5	11.2	11.1	10.0	10.5	10.4	9.1	7.4
5.0	9.0	9.5	10.5	12.0	12.0	12.2	12.2	10.0	10.6	10.6	9.1	8.4
10.0	9.0	9.4	10.5	11.9	11.0	18.8	8.5	12.7	11.6	10.2	9.0	8.4
15.0	9.0	9.4	10.4	11.0	10.3	8.9	7.7	6.5	3.8	2.5	8.4	8.4
20.0	8.9	9.4	10.4	10.7	10.1	8.9	7.5	5.9	3.2	2.4	8.0	8.4
30.0	8.8	9.4	10.3	10.2	9.6	8.5	7.9	6.2	5.0	4.5	2.9	8.4
40.0	8.7	9.4	10.0	9.6	9.3	8.5	8.4	7.3	6.5	6.4	4.8	6.5
60.0	6.3	9.3	8.6	7.2	8.4	7.8	7.5	7.0	6.7	6.5	5.7	5.5
80.0	6.7	6.8	6.9	5.4	7.2	6.0	6.0	5.3	5.2	5.7	4.8	5.2
90.0	6.3	6.4	6.8	4.4	6.1	5.2	5.2	4.7	4.1	4.3	4.2	3.5
100.0	4.9	6.0	6.3	3.9	5.6	4.2	4.1	4.6	3.5	3.4	3.3	3.9
110.0	5.0	5.3	4.7	3.1	3.5	3.0	3.3	2.5	1.9	2.3	2.5	0.7
120.0	3.9	4.4	4.7	2.3	3.6	2.3	2.2	1.7	1.0	1.7	2.2	2.2
130.0	3.7	4.2	3.5	1.3	3.4	1.6	0.9	1.4	1.2	1.8	1.7	0.8
135.0	2.6	3.7	3.4	1.3	2.8	0.7	0.8	1.3	1.1	1.6	0.7	0.8

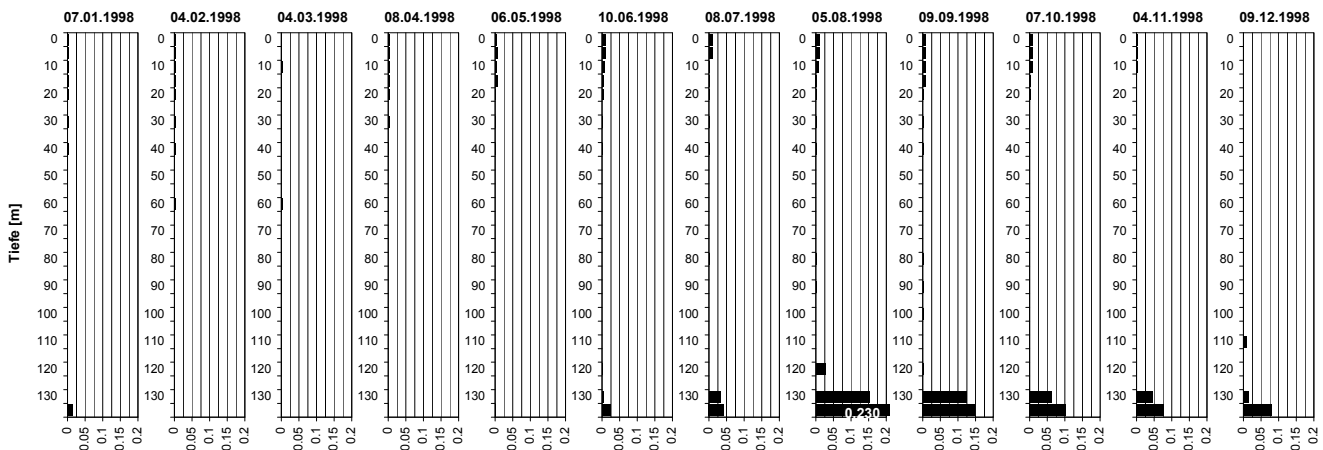
Tiefenprofile Zürichsee 1998

Ammonium [mg NH₄-N/l]



Tiefe [m]	07.01.1998 NH4-N [mg N/l]	04.02.1998 NH4-N [mg N/l]	04.03.1998 NH4-N [mg N/l]	08.04.1998 NH4-N [mg N/l]	06.05.1998 NH4-N [mg N/l]	10.06.1998 NH4-N [mg N/l]	08.07.1998 NH4-N [mg N/l]	05.08.1998 NH4-N [mg N/l]	09.09.1998 NH4-N [mg N/l]	07.10.1998 NH4-N [mg N/l]	04.11.1998 NH4-N [mg N/l]	09.12.1998 NH4-N [mg N/l]
0.0	0.01	0.01	0.01	0.01	0.02	0.02	0.01	0.01	0.00	0.01	0.00	0.00
5.0	0.00	0.01	0.01	0.01	0.02	0.02	0.02	0.02	0.01	0.00	0.00	0.00
10.0	0.00	0.01	0.01	0.01	0.04	0.01	0.01	0.02	0.02	0.01	0.01	0.00
15.0	0.00	0.00	0.01	0.01	0.02	0.01	0.01	0.01	0.01	0.01	0.00	0.00
20.0	0.00	0.01	0.01	0.01	0.01	0.01	0.01	0.01	0.01	0.01	0.00	0.00
30.0	0.00	0.01	0.01	0.01	0.01	0.01	0.00	0.01	0.00	0.01	0.00	0.00
40.0	0.00	0.00	0.00	0.00	0.00	0.00	0.00	0.00	0.00	0.00	0.00	0.00
60.0	0.00	0.00	0.00	0.01	0.00	0.00	0.00	0.00	0.00	0.00	0.00	0.00
80.0	0.00	0.00	0.00	0.01	0.00	0.00	0.01	0.00	0.00	0.01	0.00	0.00
90.0	0.00	0.00	0.00	0.00	0.00	0.01	0.00	0.00	0.01	0.00	0.00	0.00
100.0	0.00	0.00	0.00	0.01	0.00	0.01	0.00	0.00	0.00	0.00	0.00	0.00
110.0	0.00	0.00	0.00	0.01	0.00	0.01	0.00	0.00	0.00	0.01	0.00	0.03
120.0	0.00	0.01	0.01	0.01	0.00	0.01	0.01	0.04	0.00	0.01	0.00	0.00
130.0	0.01	0.00	0.01	0.01	0.00	0.03	0.09	0.16	0.13	0.12	0.11	0.05
135.0	0.06	0.01	0.01	0.01	0.01	0.07	0.09	0.17	0.24	0.24	0.20	0.19

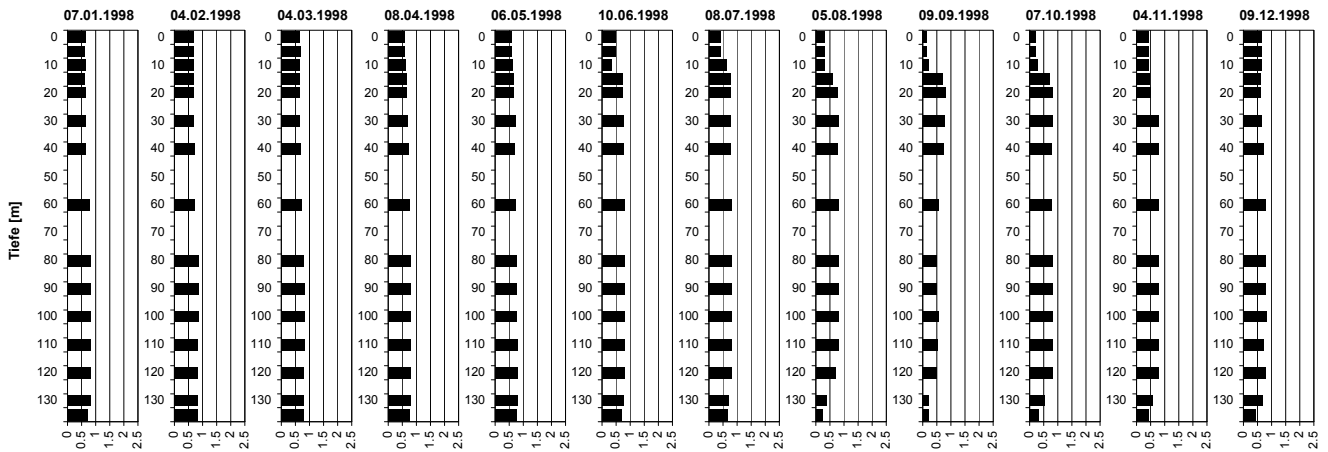
Nitrit [mg NO₂-N/l]



Tiefe [m]	07.01.1998 NO2-N [mg N/l]	04.02.1998 NO2-N [mg N/l]	04.03.1998 NO2-N [mg N/l]	08.04.1998 NO2-N [mg N/l]	06.05.1998 NO2-N [mg N/l]	10.06.1998 NO2-N [mg N/l]	08.07.1998 NO2-N [mg N/l]	05.08.1998 NO2-N [mg N/l]	09.09.1998 NO2-N [mg N/l]	07.10.1998 NO2-N [mg N/l]	04.11.1998 NO2-N [mg N/l]	09.12.1998 NO2-N [mg N/l]
0.0	0.002	0.003	0.002	0.004	0.005	0.010	0.009	0.011	0.008	0.008	0.002	0.002
5.0	0.002	0.003	0.002	0.004	0.005	0.010	0.009	0.010	0.008	0.008	0.002	0.002
10.0	0.002	0.003	0.002	0.004	0.003	0.006	0.001	0.008	0.007	0.008	0.002	0.002
15.0	0.002	0.003	0.002	0.004	0.005	0.004	0.002	0.002	0.006	0.003	0.001	0.002
20.0	0.002	0.003	0.002	0.003	0.002	0.003	0.002	0.002	0.002	0.002	0.001	0.002
30.0	0.002	0.003	0.002	0.003	0.002	0.002	0.001	0.001	0.001	0.001	0.001	0.002
40.0	0.002	0.003	0.001	0.001	0.001	0.001	0.001	0.001	0.001	0.001	0.000	0.001
60.0	0.000	0.003	0.003	0.000	0.000	0.000	0.000	0.000	0.000	0.001	0.000	0.000
80.0	0.000	0.000	0.001	0.000	0.000	0.000	0.001	0.001	0.001	0.001	0.000	0.000
90.0	0.000	0.000	0.001	0.000	0.000	0.000	0.000	0.001	0.001	0.001	0.000	0.000
100.0	0.000	0.000	0.001	0.000	0.000	0.000	0.000	0.000	0.001	0.000	0.001	0.000
110.0	0.000	0.000	0.001	0.000	0.000	0.000	0.000	0.000	0.000	0.000	0.001	0.008
120.0	0.000	0.001	0.001	0.000	0.000	0.002	0.000	0.027	0.001	0.001	0.001	0.001
130.0	0.000	0.001	0.001	0.000	0.000	0.004	0.031	0.152	0.123	0.063	0.045	0.015
135.0	0.015	0.001	0.001	0.001	0.001	0.024	0.042	0.230	0.148	0.103	0.077	0.080

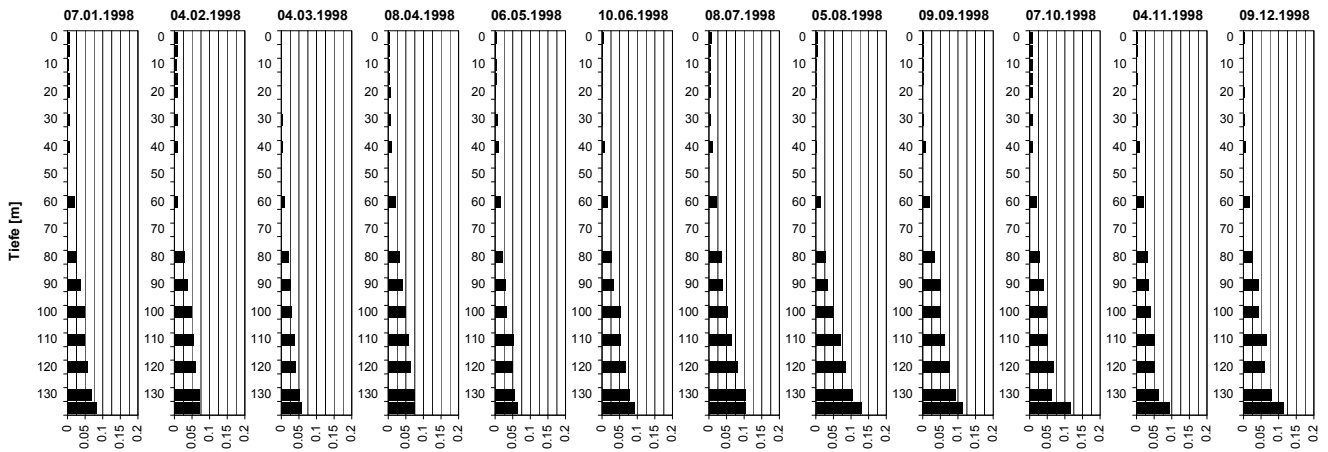
Tiefenprofile Zürichsee 1998

Nitrat [mg NO₃-N/l]



Tiefe [m]	07.01.1998 NO ₃ -N [mg N/l]	04.02.1998 NO ₃ -N [mg N/l]	04.03.1998 NO ₃ -N [mg N/l]	08.04.1998 NO ₃ -N [mg N/l]	06.05.1998 NO ₃ -N [mg N/l]	10.06.1998 NO ₃ -N [mg N/l]	08.07.1998 NO ₃ -N [mg N/l]	05.08.1998 NO ₃ -N [mg N/l]	09.09.1998 NO ₃ -N [mg N/l]	07.10.1998 NO ₃ -N [mg N/l]	04.11.1998 NO ₃ -N [mg N/l]	09.12.1998 NO ₃ -N [mg N/l]
0.0	0.6	0.7	0.6	0.6	0.6	0.5	0.4	0.3	0.2	0.2	0.4	0.6
5.0	0.6	0.7	0.7	0.6	0.6	0.5	0.4	0.3	0.2	0.2	0.4	0.7
10.0	0.6	0.7	0.7	0.6	0.6	0.3	0.6	0.3	0.2	0.3	0.4	0.6
15.0	0.6	0.7	0.7	0.6	0.7	0.7	0.8	0.6	0.7	0.7	0.5	0.6
20.0	0.6	0.7	0.7	0.7	0.7	0.7	0.8	0.8	0.8	0.8	0.5	0.6
30.0	0.6	0.7	0.7	0.7	0.7	0.7	0.8	0.8	0.8	0.8	0.8	0.7
40.0	0.7	0.7	0.7	0.7	0.7	0.8	0.8	0.8	0.7	0.8	0.8	0.7
60.0	0.8	0.7	0.7	0.8	0.7	0.8	0.8	0.8	0.6	0.8	0.8	0.8
80.0	0.8	0.8	0.8	0.8	0.7	0.8	0.8	0.8	0.5	0.8	0.8	0.8
90.0	0.8	0.8	0.8	0.8	0.8	0.8	0.8	0.8	0.5	0.8	0.8	0.8
100.0	0.8	0.8	0.8	0.8	0.8	0.8	0.8	0.8	0.6	0.8	0.8	0.8
110.0	0.8	0.8	0.8	0.8	0.8	0.8	0.8	0.8	0.5	0.8	0.8	0.7
120.0	0.8	0.8	0.8	0.8	0.8	0.8	0.8	0.7	0.5	0.8	0.8	0.8
130.0	0.8	0.8	0.8	0.8	0.8	0.8	0.7	0.4	0.2	0.5	0.6	0.7
135.0	0.7	0.8	0.8	0.7	0.8	0.7	0.6	0.2	0.2	0.3	0.4	0.4

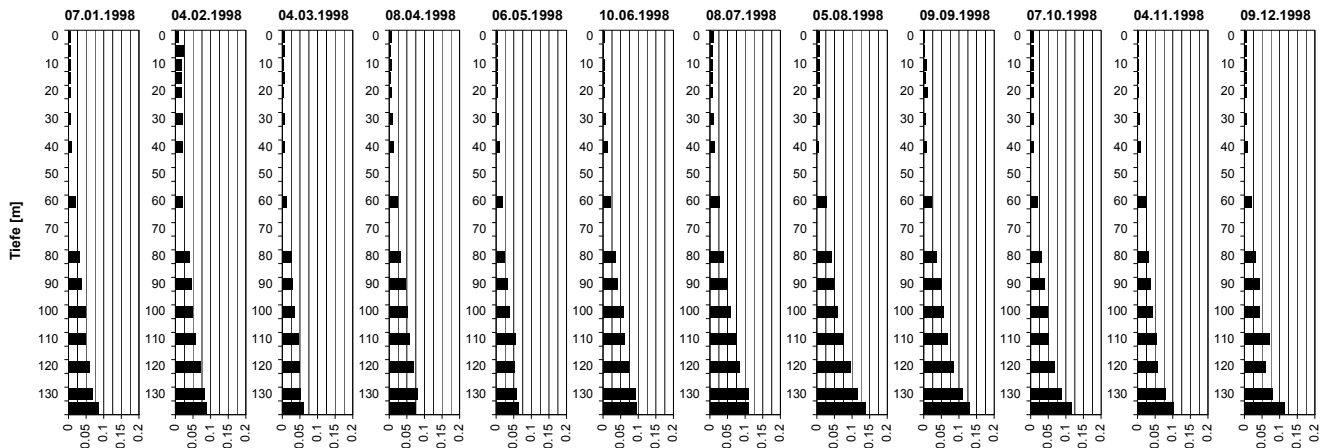
Phosphat [mg PO₄-P/l]



Tiefe [m]	07.01.1998 PO ₄ -P [mg P/l]	04.02.1998 PO ₄ -P [mg P/l]	04.03.1998 PO ₄ -P [mg P/l]	08.04.1998 PO ₄ -P [mg P/l]	06.05.1998 PO ₄ -P [mg P/l]	10.06.1998 PO ₄ -P [mg P/l]	08.07.1998 PO ₄ -P [mg P/l]	05.08.1998 PO ₄ -P [mg P/l]	09.09.1998 PO ₄ -P [mg P/l]	07.10.1998 PO ₄ -P [mg P/l]	04.11.1998 PO ₄ -P [mg P/l]	09.12.1998 PO ₄ -P [mg P/l]
0.0	0.006	0.008	0.002	0.004	0.003	0.003	0.006	0.004	0.002	0.008	0.002	0.003
5.0	0.006	0.008	0.002	0.004	0.002	0.001	0.003	0.004	0.002	0.008	0.002	0.002
10.0	0.003	0.007	0.001	0.004	0.003	0.002	0.004	0.002	0.001	0.007	0.001	0.002
15.0	0.005	0.009	0.002	0.004	0.003	0.001	0.003	0.002	0.001	0.008	0.002	0.002
20.0	0.006	0.009	0.002	0.006	0.002	0.001	0.003	0.001	0.000	0.008	0.001	0.003
30.0	0.006	0.008	0.003	0.007	0.005	0.001	0.003	0.000	0.003	0.008	0.004	0.003
40.0	0.006	0.010	0.003	0.008	0.009	0.005	0.010	0.002	0.006	0.009	0.008	0.006
60.0	0.021	0.008	0.010	0.021	0.014	0.014	0.020	0.013	0.020	0.021	0.021	0.018
80.0	0.027	0.030	0.021	0.033	0.020	0.026	0.034	0.027	0.033	0.029	0.031	0.027
90.0	0.036	0.038	0.027	0.041	0.029	0.031	0.038	0.033	0.051	0.038	0.035	0.044
100.0	0.048	0.049	0.029	0.049	0.033	0.051	0.053	0.047	0.051	0.047	0.041	0.043
110.0	0.048	0.054	0.038	0.056	0.052	0.051	0.064	0.068	0.061	0.052	0.051	0.065
120.0	0.057	0.060	0.039	0.064	0.049	0.066	0.079	0.083	0.076	0.067	0.052	0.061
130.0	0.067	0.071	0.052	0.074	0.054	0.076	0.104	0.103	0.094	0.063	0.063	0.079
135.0	0.084	0.073	0.056	0.074	0.062	0.093	0.104	0.129	0.114	0.115	0.093	0.113

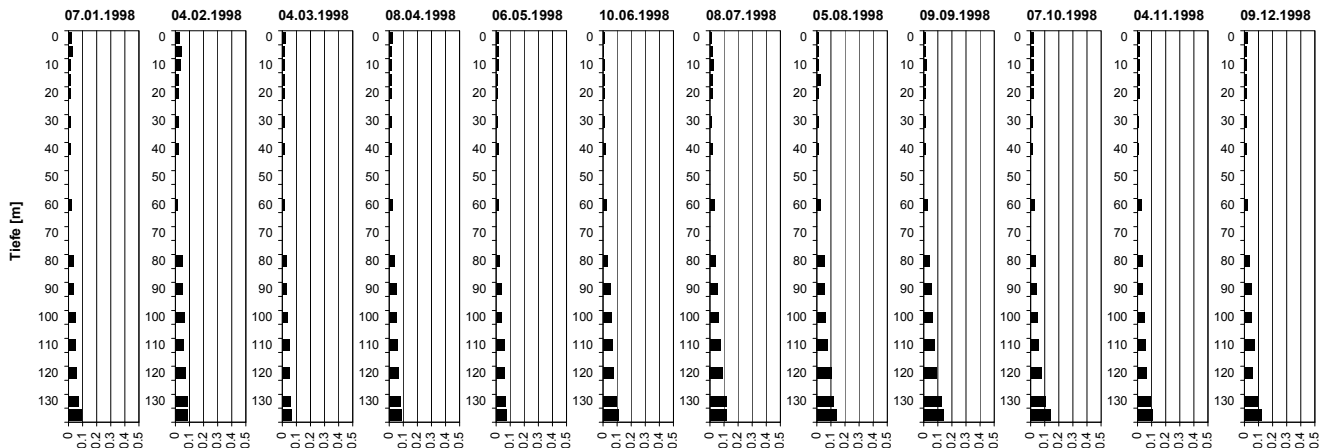
Tiefenprofile Zürichsee 1998

Gelöster Phosphor [mg P/l]



Tiefe [m]	07.01.1998 P-gel [mg P/l]	04.02.1998 P-gel [mg P/l]	04.03.1998 P-gel [mg P/l]	08.04.1998 P-gel [mg P/l]	06.05.1998 P-gel [mg P/l]	10.06.1998 P-gel [mg P/l]	08.07.1998 P-gel [mg P/l]	05.08.1998 P-gel [mg P/l]	09.09.1998 P-gel [mg P/l]	07.10.1998 P-gel [mg P/l]	04.11.1998 P-gel [mg P/l]	09.12.1998 P-gel [mg P/l]
0.0	0.006	0.010	0.007	0.006	0.004	0.003	0.008	0.006	0.003	0.008	0.003	0.005
5.0	0.006	0.022	0.005	0.004	0.004	0.002	0.007	0.006	0.003	0.009	0.003	0.005
10.0	0.005	0.016	0.004	0.005	0.003	0.004	0.007	0.006	0.006	0.007	0.002	0.006
15.0	0.007	0.017	0.005	0.004	0.003	0.004	0.007	0.006	0.005	0.009	0.002	0.006
20.0	0.006	0.017	0.004	0.006	0.004	0.004	0.006	0.006	0.011	0.008	0.002	0.006
30.0	0.006	0.019	0.005	0.008	0.006	0.005	0.008	0.006	0.004	0.009	0.007	0.006
40.0	0.008	0.020	0.006	0.011	0.010	0.012	0.011	0.005	0.006	0.009	0.009	0.010
60.0	0.021	0.019	0.013	0.024	0.016	0.021	0.025	0.027	0.022	0.021	0.024	0.020
80.0	0.032	0.040	0.026	0.033	0.023	0.035	0.039	0.042	0.037	0.031	0.033	0.031
90.0	0.038	0.046	0.030	0.046	0.032	0.041	0.048	0.045	0.051	0.038	0.038	0.044
100.0	0.049	0.049	0.034	0.051	0.036	0.056	0.058	0.057	0.056	0.047	0.044	0.044
110.0	0.048	0.056	0.045	0.056	0.054	0.061	0.072	0.075	0.066	0.052	0.054	0.071
120.0	0.059	0.073	0.048	0.067	0.051	0.072	0.084	0.096	0.084	0.067	0.056	0.061
130.0	0.069	0.083	0.053	0.080	0.058	0.090	0.108	0.114	0.111	0.087	0.079	0.080
135.0	0.086	0.089	0.059	0.075	0.064	0.095	0.108	0.138	0.129	0.115	0.102	0.113

Gesamt-Phosphor [mg P/l]



Tiefe [m]	07.01.1998 P-tot [mg P/l]	04.02.1998 P-tot [mg P/l]	04.03.1998 P-tot [mg P/l]	08.04.1998 P-tot [mg P/l]	06.05.1998 P-tot [mg P/l]	10.06.1998 P-tot [mg P/l]	08.07.1998 P-tot [mg P/l]	05.08.1998 P-tot [mg P/l]	09.09.1998 P-tot [mg P/l]	07.10.1998 P-tot [mg P/l]	04.11.1998 P-tot [mg P/l]	09.12.1998 P-tot [mg P/l]
0.0	0.020	0.032	0.024	0.021	0.015	0.007	0.011	0.012	0.014	0.020	0.014	0.020
5.0	0.030	0.046	0.017	0.018	0.013	0.005	0.014	0.009	0.011	0.020	0.014	0.017
10.0	0.017	0.039	0.016	0.017	0.015	0.012	0.024	0.014	0.018	0.018	0.015	0.019
15.0	0.017	0.020	0.017	0.014	0.011	0.012	0.014	0.023	0.014	0.021	0.012	0.019
20.0	0.018	0.020	0.016	0.014	0.012	0.010	0.015	0.013	0.014	0.022	0.012	0.017
30.0	0.019	0.020	0.016	0.015	0.010	0.008	0.011	0.013	0.012	0.012	0.010	0.017
40.0	0.019	0.021	0.015	0.016	0.013	0.018	0.014	0.009	0.012	0.012	0.010	0.016
60.0	0.023	0.019	0.018	0.025	0.018	0.024	0.028	0.027	0.028	0.024	0.028	0.026
80.0	0.033	0.050	0.029	0.038	0.025	0.030	0.039	0.049	0.041	0.034	0.035	0.033
90.0	0.038	0.053	0.031	0.048	0.034	0.050	0.052	0.051	0.053	0.040	0.038	0.049
100.0	0.050	0.065	0.036	0.052	0.039	0.057	0.062	0.057	0.064	0.050	0.051	0.048
110.0	0.048	0.061	0.047	0.056	0.058	0.064	0.073	0.078	0.074	0.055	0.058	0.071
120.0	0.059	0.075	0.048	0.067	0.054	0.075	0.090	0.102	0.091	0.074	0.062	0.061
130.0	0.074	0.083	0.056	0.080	0.063	0.090	0.118	0.121	0.122	0.104	0.090	0.090
135.0	0.093	0.089	0.067	0.083	0.070	0.110	0.118	0.138	0.144	0.141	0.110	0.121