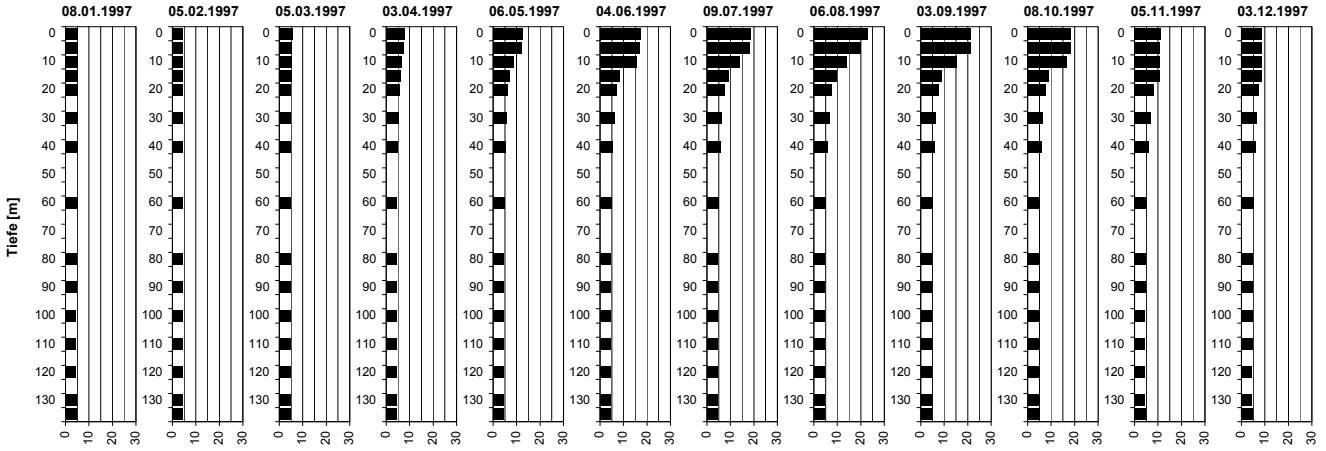
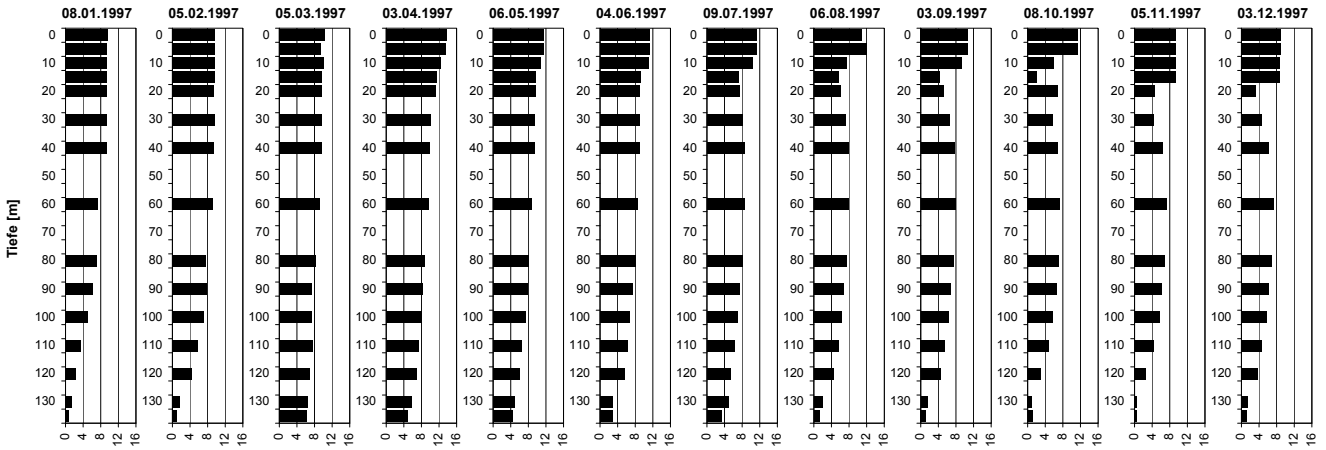


Temperatur [°C]



Tiefe [m]	08.01.1997 Temp [°C]	05.02.1997 Temp [°C]	05.03.1997 Temp [°C]	03.04.1997 Temp [°C]	06.05.1997 Temp [°C]	04.06.1997 Temp [°C]	09.07.1997 Temp [°C]	06.08.1997 Temp [°C]	03.09.1997 Temp [°C]	08.10.1997 Temp [°C]	05.11.1997 Temp [°C]	03.12.1997 Temp [°C]
0.0	5.0	4.4	5.6	7.6	12.3	17.2	18.4	22.7	21.2	18.1	10.9	8.4
5.0	5.0	4.4	5.2	7.2	12.2	16.5	18.2	19.7	21.2	18.1	10.8	8.4
10.0	5.0	4.4	5.0	6.4	8.4	15.3	13.6	14.1	15.2	16.3	10.8	8.4
15.0	5.1	4.4	5.0	6.0	6.7	8.3	9.0	9.4	8.9	8.7	10.8	8.4
20.0	5.0	4.4	4.9	5.7	6.0	6.8	7.5	7.6	7.3	7.5	8.0	7.4
30.0	5.0	4.4	4.9	5.0	5.5	6.0	6.3	6.4	6.4	6.5	6.8	6.6
40.0	5.0	4.4	4.9	4.8	5.1	5.3	5.6	5.7	5.7	5.8	5.9	5.9
60.0	5.0	4.4	4.8	4.5	4.6	4.7	4.7	4.9	4.8	4.9	5.0	5.0
80.0	4.7	4.5	4.7	4.5	4.5	4.5	4.5	4.6	4.6	4.6	4.6	4.6
90.0	4.6	4.5	4.7	4.4	4.4	4.5	4.5	4.5	4.5	4.5	4.6	4.6
100.0	4.5	4.5	4.7	4.4	4.4	4.5	4.5	4.5	4.5	4.5	4.5	4.6
110.0	4.5	4.5	4.7	4.4	4.4	4.5	4.5	4.5	4.5	4.5	4.5	4.6
120.0	4.5	4.5	4.8	4.4	4.4	4.5	4.5	4.5	4.5	4.5	4.5	4.5
130.0	4.6	4.5	4.8	4.4	4.5	4.5	4.5	4.5	4.5	4.5	4.5	4.5
135.0	4.6	4.5	4.8	4.5	4.5	4.5	4.5	4.5	4.5	4.5	4.6	4.6

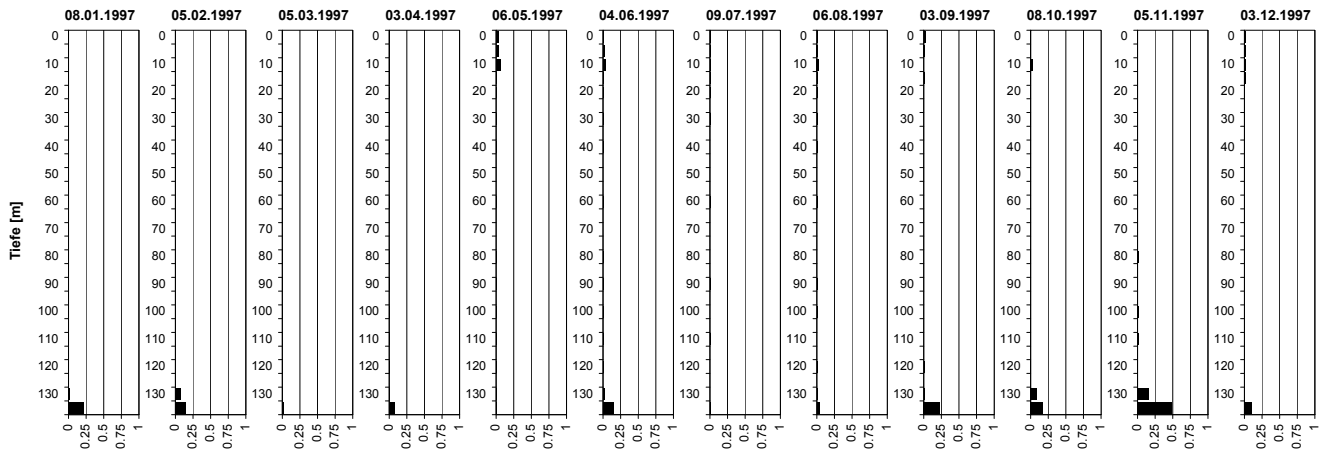
Sauerstoff [mg O₂/l]



Tiefe [m]	08.01.1997 O ₂ [mg O ₂ /l]	05.02.1997 O ₂ [mg O ₂ /l]	05.03.1997 O ₂ [mg O ₂ /l]	03.04.1997 O ₂ [mg O ₂ /l]	06.05.1997 O ₂ [mg O ₂ /l]	04.06.1997 O ₂ [mg O ₂ /l]	09.07.1997 O ₂ [mg O ₂ /l]	06.08.1997 O ₂ [mg O ₂ /l]	03.09.1997 O ₂ [mg O ₂ /l]	08.10.1997 O ₂ [mg O ₂ /l]	05.11.1997 O ₂ [mg O ₂ /l]	03.12.1997 O ₂ [mg O ₂ /l]
0.0	9.7	9.6	10.2	13.8	11.5	11.2	11.2	10.9	10.6	11.4	9.4	8.8
5.0	9.4	9.6	9.3	13.5	11.5	11.2	11.2	11.9	10.7	11.4	9.4	8.8
10.0	9.4	9.5	10.1	12.2	10.7	10.9	10.4	7.5	9.3	6.0	9.4	8.6
15.0	9.4	9.5	9.7	11.5	9.5	9.0	7.1	5.5	4.1	2.0	9.3	8.7
20.0	9.4	9.5	9.7	11.1	9.7	9.0	7.3	6.0	5.2	6.8	4.6	3.2
30.0	9.4	9.5	9.6	10.1	9.5	8.8	8.1	7.1	6.5	5.7	4.5	4.6
40.0	9.4	9.4	9.7	9.8	9.3	8.9	8.5	7.8	7.6	6.7	6.4	6.2
60.0	7.2	9.0	9.3	9.7	8.8	8.5	8.5	7.8	7.8	7.3	7.3	7.2
80.0	7.0	7.7	8.3	8.7	8.1	8.0	8.0	7.3	7.3	7.1	6.9	6.9
90.0	6.1	7.8	7.5	8.3	7.7	7.3	7.4	6.6	6.8	6.5	6.2	6.3
100.0	5.0	7.1	7.4	8.0	7.4	6.7	6.9	6.4	6.2	5.7	5.6	5.8
110.0	3.4	5.7	7.6	7.4	6.4	6.2	6.3	5.5	5.5	4.8	4.3	4.5
120.0	2.4	4.3	6.9	6.9	6.0	5.6	5.2	4.4	4.4	3.0	2.4	3.6
130.0	1.4	1.6	6.3	5.9	4.9	2.8	4.8	1.9	1.4	0.9	0.5	1.5
135.0	0.8	1.0	6.1	4.9	4.5	2.8	3.2	1.2	1.1	1.0	0.5	1.2

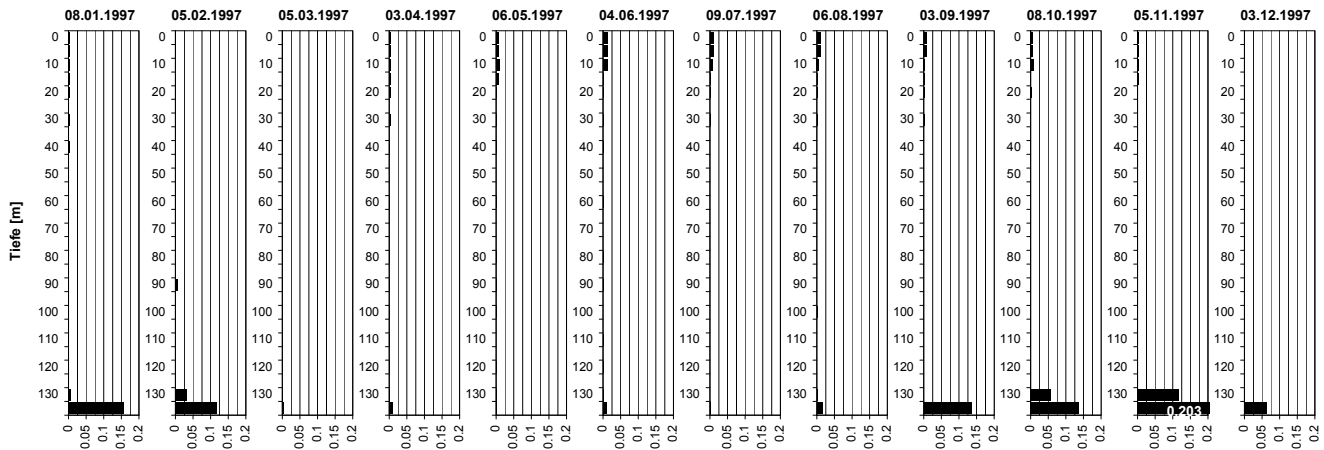
Tiefenprofile Zürichsee 1997

Ammonium [mg NH₄-N/l]



Tiefe [m]	08.01.1997 NH4-N [mg N/l]	05.02.1997 NH4-N [mg N/l]	05.03.1997 NH4-N [mg N/l]	03.04.1997 NH4-N [mg N/l]	06.05.1997 NH4-N [mg N/l]	04.06.1997 NH4-N [mg N/l]	09.07.1997 NH4-N [mg N/l]	06.08.1997 NH4-N [mg N/l]	03.09.1997 NH4-N [mg N/l]	08.10.1997 NH4-N [mg N/l]	05.11.1997 NH4-N [mg N/l]	03.12.1997 NH4-N [mg N/l]
0.0	0.01	0.00	0.01	0.01	0.03	0.01	0.01	0.01	0.02	0.01	0.00	0.02
5.0	0.01	0.01	0.01	0.01	0.04	0.02	0.01	0.01	0.01	0.01	0.00	0.02
10.0	0.01	0.01	0.01	0.01	0.07	0.03	0.01	0.03	0.00	0.03	0.00	0.02
15.0	0.01	0.00	0.01	0.01	0.01	0.01	0.01	0.01	0.01	0.01	0.00	0.02
20.0	0.01	0.01	0.01	0.01	0.01	0.01	0.01	0.01	0.00	0.01	0.00	0.00
30.0	0.01	0.01	0.01	0.01	0.01	0.01	0.01	0.01	0.00	0.01	0.00	0.01
40.0	0.01	0.00	0.01	0.01	0.01	0.01	0.00	0.01	0.00	0.00	0.00	0.01
60.0	0.00	0.01	0.01	0.01	0.01	0.01	0.01	0.01	0.00	0.00	0.00	0.01
80.0	0.01	0.00	0.01	0.01	0.01	0.01	0.00	0.00	0.00	0.01	0.01	0.01
90.0	0.01	0.01	0.01	0.01	0.01	0.01	0.01	0.01	0.00	0.00	0.00	0.00
100.0	0.01	0.01	0.01	0.01	0.01	0.01	0.00	0.01	0.00	0.00	0.01	0.01
110.0	0.01	0.01	0.01	0.01	0.01	0.01	0.01	0.00	0.00	0.00	0.01	0.00
120.0	0.01	0.01	0.01	0.01	0.01	0.01	0.00	0.01	0.01	0.01	0.01	0.00
130.0	0.02	0.08	0.01	0.01	0.01	0.02	0.00	0.01	0.01	0.08	0.16	0.01
135.0	0.22	0.15	0.02	0.07	0.01	0.14	0.01	0.04	0.23	0.17	0.48	0.09

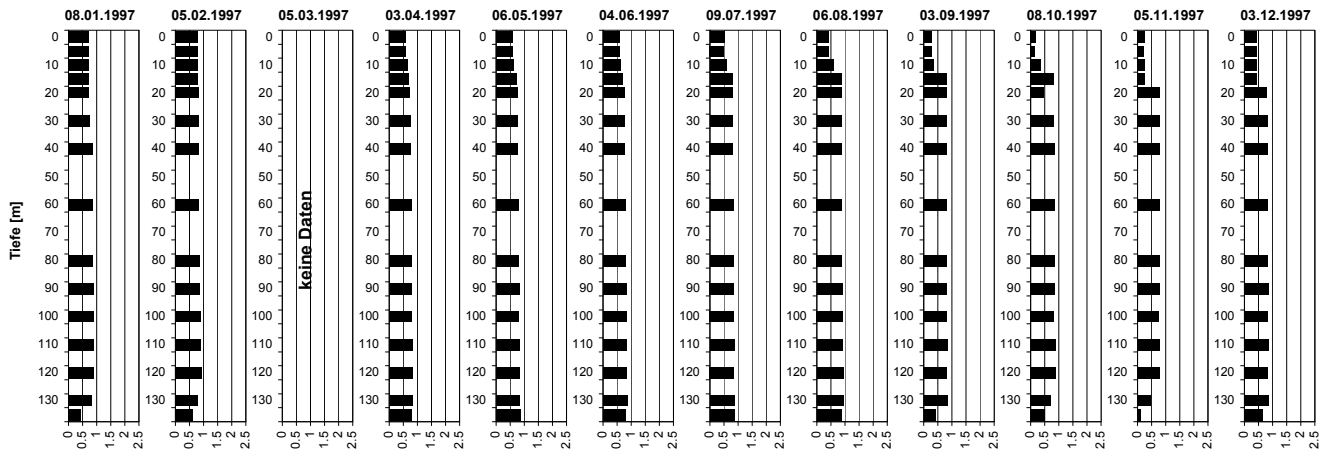
Nitrit [mg NO₂-N/l]



Tiefe [m]	08.01.1997 NO2-N [mg N/l]	05.02.1997 NO2-N [mg N/l]	05.03.1997 NO2-N [mg N/l]	03.04.1997 NO2-N [mg N/l]	06.05.1997 NO2-N [mg N/l]	04.06.1997 NO2-N [mg N/l]	09.07.1997 NO2-N [mg N/l]	06.08.1997 NO2-N [mg N/l]	03.09.1997 NO2-N [mg N/l]	08.10.1997 NO2-N [mg N/l]	05.11.1997 NO2-N [mg N/l]	03.12.1997 NO2-N [mg N/l]
0.0	0.002	0.001	0.002	0.005	0.007	0.011	0.010	0.009	0.008	0.005	0.003	0.002
5.0	0.002	0.001	0.002	0.005	0.007	0.011	0.010	0.010	0.008	0.006	0.003	0.002
10.0	0.002	0.001	0.001	0.004	0.008	0.011	0.005	0.006	0.003	0.007	0.003	0.002
15.0	0.002	0.001	0.001	0.004	0.008	0.002	0.001	0.002	0.002	0.001	0.003	0.002
20.0	0.002	0.001	0.001	0.004	0.001	0.001	0.001	0.001	0.002	0.004	0.001	0.000
30.0	0.002	0.001	0.001	0.004	0.001	0.001	0.001	0.001	0.001	0.000	0.000	0.000
40.0	0.002	0.001	0.001	0.002	0.001	0.001	0.000	0.000	0.000	0.000	0.000	0.000
60.0	0.001	0.001	0.001	0.001	0.001	0.001	0.000	0.000	0.000	0.000	0.000	0.000
80.0	0.001	0.001	0.001	0.001	0.001	0.001	0.000	0.000	0.000	0.001	0.000	0.000
90.0	0.001	0.005	0.001	0.001	0.001	0.001	0.000	0.000	0.000	0.000	0.000	0.000
100.0	0.001	0.001	0.001	0.001	0.001	0.000	0.000	0.001	0.000	0.000	0.000	0.000
110.0	0.001	0.001	0.001	0.001	0.000	0.001	0.000	0.000	0.000	0.001	0.000	0.000
120.0	0.001	0.001	0.001	0.001	0.001	0.001	0.000	0.000	0.000	0.001	0.001	0.000
130.0	0.005	0.033	0.002	0.002	0.002	0.002	0.000	0.001	0.000	0.056	0.117	0.001
135.0	0.155	0.119	0.003	0.010	0.002	0.009	0.001	0.014	0.134	0.137	0.203	0.063

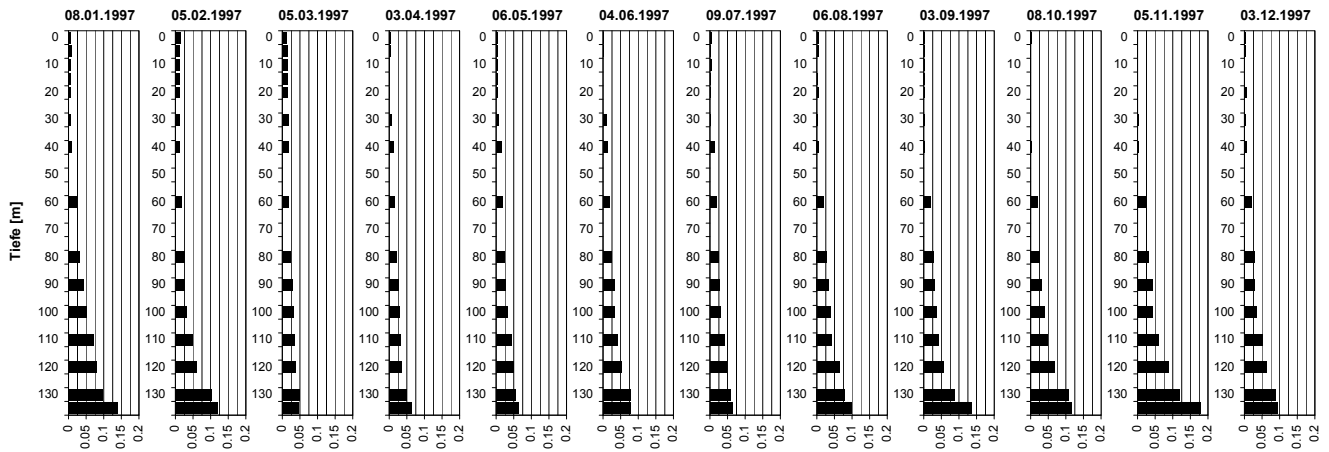
Tiefenprofile Zürichsee 1997

Nitrat [mg NO₃-N/l]



Tiefe [m]	08.01.1997 NO ₃ -N [mg N/l]	05.02.1997 NO ₃ -N [mg N/l]	05.03.1997 NO ₃ -N [mg N/l]	03.04.1997 NO ₃ -N [mg N/l]	06.05.1997 NO ₃ -N [mg N/l]	04.06.1997 NO ₃ -N [mg N/l]	09.07.1997 NO ₃ -N [mg N/l]	06.08.1997 NO ₃ -N [mg N/l]	03.09.1997 NO ₃ -N [mg N/l]	08.10.1997 NO ₃ -N [mg N/l]	05.11.1997 NO ₃ -N [mg N/l]	03.12.1997 NO ₃ -N [mg N/l]
0.0	0.7	0.8		0.6	0.6	0.6	0.5	0.4	0.3	0.2	0.2	0.4
5.0	0.7	0.8		0.6	0.6	0.6	0.5	0.4	0.3	0.1	0.2	0.4
10.0	0.7	0.8		0.7	0.6	0.6	0.6	0.6	0.3	0.4	0.2	0.4
15.0	0.7	0.8		0.7	0.7	0.7	0.8	0.9	0.8	0.8	0.2	0.4
20.0	0.7	0.8		0.7	0.7	0.7	0.8	0.9	0.8	0.4	0.8	0.8
30.0	0.7	0.8		0.7	0.8	0.8	0.8	0.9	0.8	0.8	0.8	0.8
40.0	0.9	0.8		0.8	0.8	0.8	0.8	0.9	0.8	0.8	0.8	0.8
60.0	0.9	0.8		0.8	0.8	0.8	0.8	0.9	0.8	0.8	0.8	0.8
80.0	0.9	0.9		0.8	0.8	0.8	0.8	0.9	0.8	0.9	0.8	0.8
90.0	0.9	0.9		0.8	0.8	0.8	0.8	0.9	0.8	0.8	0.8	0.9
100.0	0.9	0.9		0.8	0.8	0.8	0.8	0.9	0.8	0.8	0.8	0.8
110.0	0.9	0.9		0.8	0.8	0.8	0.9	0.9	0.8	0.9	0.8	0.8
120.0	0.9	0.9		0.8	0.8	0.8	0.8	0.9	0.8	0.9	0.8	0.8
130.0	0.8	0.8		0.8	0.8	0.9	0.9	0.9	0.8	0.7	0.5	0.8
135.0	0.4	0.6		0.8	0.9	0.8	0.9	0.9	0.4	0.5	0.1	0.6

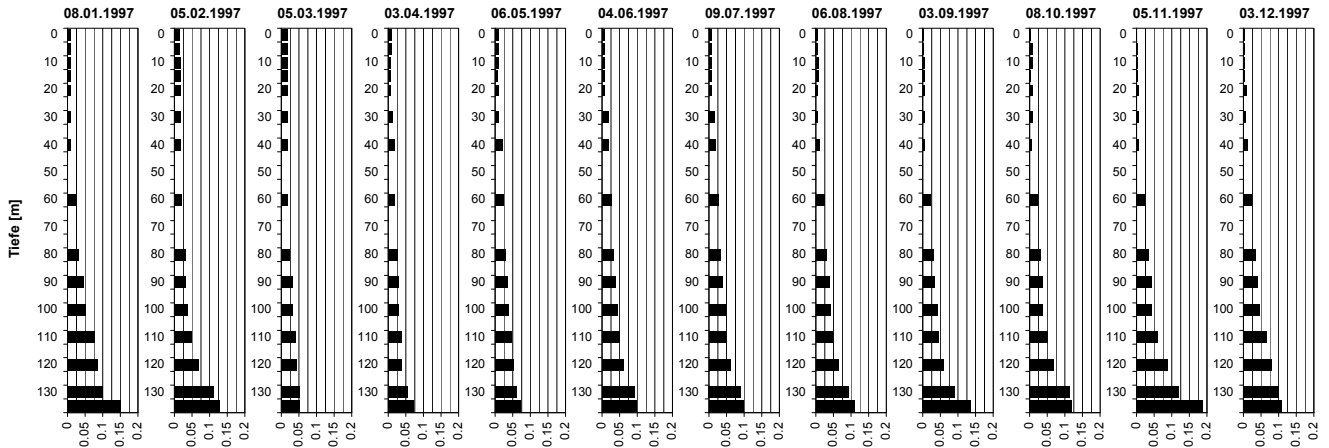
Phosphat [mg PO₄-P/l]



Tiefe [m]	08.01.1997 PO ₄ -P [mg P/l]	05.02.1997 PO ₄ -P [mg P/l]	05.03.1997 PO ₄ -P [mg P/l]	03.04.1997 PO ₄ -P [mg P/l]	06.05.1997 PO ₄ -P [mg P/l]	04.06.1997 PO ₄ -P [mg P/l]	09.07.1997 PO ₄ -P [mg P/l]	06.08.1997 PO ₄ -P [mg P/l]	03.09.1997 PO ₄ -P [mg P/l]	08.10.1997 PO ₄ -P [mg P/l]	05.11.1997 PO ₄ -P [mg P/l]	03.12.1997 PO ₄ -P [mg P/l]
0.0	0.006	0.014	0.013	0.004	0.003	0.002	0.003	0.004	0.003	0.003	0.000	0.003
5.0	0.008	0.013	0.015	0.003	0.003	0.001	0.002	0.004	0.001	0.001	0.000	0.003
10.0	0.006	0.013	0.014	0.002	0.003	0.000	0.003	0.000	0.002	0.001	0.000	0.002
15.0	0.007	0.013	0.015	0.002	0.003	0.000	0.002	0.002	0.003	0.001	0.000	0.002
20.0	0.007	0.012	0.015	0.002	0.004	0.000	0.002	0.004	0.002	0.001	0.001	0.006
30.0	0.007	0.013	0.016	0.007	0.007	0.009	0.002	0.003	0.003	0.001	0.002	0.003
40.0	0.008	0.013	0.016	0.013	0.014	0.012	0.012	0.005	0.003	0.003	0.004	0.006
60.0	0.024	0.016	0.018	0.015	0.017	0.017	0.018	0.019	0.020	0.018	0.023	0.020
80.0	0.031	0.027	0.022	0.021	0.023	0.024	0.023	0.028	0.027	0.025	0.033	0.028
90.0	0.042	0.027	0.030	0.026	0.027	0.031	0.027	0.034	0.031	0.031	0.042	0.030
100.0	0.051	0.033	0.032	0.028	0.031	0.033	0.029	0.037	0.037	0.039	0.042	0.035
110.0	0.072	0.048	0.034	0.031	0.042	0.041	0.041	0.042	0.042	0.049	0.059	0.052
120.0	0.080	0.061	0.037	0.035	0.049	0.052	0.047	0.063	0.057	0.068	0.087	0.064
130.0	0.098	0.104	0.048	0.050	0.054	0.078	0.057	0.079	0.087	0.107	0.118	0.088
135.0	0.140	0.121	0.047	0.062	0.062	0.077	0.063	0.097	0.136	0.117	0.180	0.095

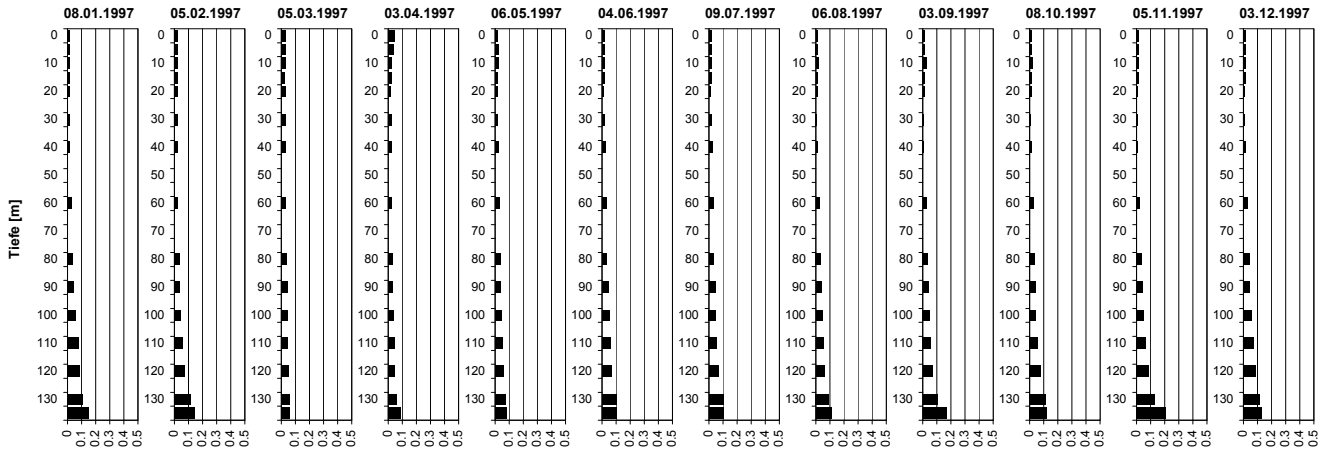
Tiefenprofile Zürichsee 1997

Gelöster Phosphor [mg P/l]



Tiefe [m]	08.01.1997 P-gel [mg P/l]	05.02.1997 P-gel [mg P/l]	05.03.1997 P-gel [mg P/l]	03.04.1997 P-gel [mg P/l]	06.05.1997 P-gel [mg P/l]	04.06.1997 P-gel [mg P/l]	09.07.1997 P-gel [mg P/l]	06.08.1997 P-gel [mg P/l]	03.09.1997 P-gel [mg P/l]	08.10.1997 P-gel [mg P/l]	05.11.1997 P-gel [mg P/l]	03.12.1997 P-gel [mg P/l]
0.0	0.010	0.014	0.018	0.009	0.008	0.006	0.006	0.005	0.003	0.004	0.001	0.004
5.0	0.010	0.014	0.016	0.010	0.008	0.006	0.006	0.005	0.003	0.007	0.003	0.003
10.0	0.009	0.018	0.017	0.005	0.008	0.006	0.006	0.006	0.005	0.007	0.004	0.003
15.0	0.009	0.017	0.017	0.005	0.006	0.005	0.005	0.006	0.004	0.004	0.003	0.004
20.0	0.010	0.017	0.017	0.005	0.008	0.007	0.007	0.005	0.004	0.007	0.005	0.008
30.0	0.009	0.018	0.017	0.012	0.010	0.016	0.016	0.005	0.004	0.007	0.005	0.007
40.0	0.009	0.017	0.017	0.016	0.019	0.018	0.018	0.009	0.004	0.006	0.005	0.011
60.0	0.027	0.020	0.018	0.017	0.023	0.025	0.025	0.023	0.021	0.024	0.024	0.024
80.0	0.032	0.032	0.024	0.025	0.029	0.031	0.031	0.030	0.030	0.032	0.035	0.034
90.0	0.045	0.031	0.031	0.028	0.034	0.037	0.037	0.037	0.033	0.036	0.042	0.039
100.0	0.053	0.036	0.032	0.030	0.037	0.042	0.045	0.040	0.041	0.036	0.043	0.045
110.0	0.076	0.050	0.039	0.036	0.047	0.049	0.049	0.047	0.045	0.050	0.059	0.065
120.0	0.086	0.067	0.042	0.038	0.053	0.060	0.060	0.063	0.058	0.069	0.087	0.081
130.0	0.099	0.110	0.053	0.055	0.061	0.090	0.090	0.092	0.091	0.114	0.119	0.100
135.0	0.152	0.129	0.052	0.072	0.071	0.096	0.096	0.109	0.136	0.119	0.189	0.108

Gesamt-Phosphor [mg P/l]



Tiefe [m]	08.01.1997 P-tot [mg P/l]	05.02.1997 P-tot [mg P/l]	05.03.1997 P-tot [mg P/l]	03.04.1997 P-tot [mg P/l]	06.05.1997 P-tot [mg P/l]	04.06.1997 P-tot [mg P/l]	09.07.1997 P-tot [mg P/l]	06.08.1997 P-tot [mg P/l]	03.09.1997 P-tot [mg P/l]	08.10.1997 P-tot [mg P/l]	05.11.1997 P-tot [mg P/l]	03.12.1997 P-tot [mg P/l]
0.0	0.019	0.024	0.029	0.040	0.017	0.015	0.015	0.011	0.013	0.017	0.019	0.017
5.0	0.017	0.024	0.027	0.038	0.021	0.015	0.015	0.013	0.011	0.014	0.017	0.016
10.0	0.017	0.024	0.027	0.024	0.026	0.017	0.017	0.016	0.024	0.019	0.017	0.015
15.0	0.017	0.023	0.026	0.021	0.018	0.015	0.015	0.012	0.014	0.015	0.016	0.015
20.0	0.017	0.023	0.028	0.019	0.015	0.011	0.011	0.011	0.009	0.014	0.008	0.011
30.0	0.017	0.023	0.027	0.021	0.016	0.019	0.019	0.007	0.007	0.010	0.010	0.011
40.0	0.017	0.024	0.027	0.023	0.025	0.020	0.020	0.011	0.007	0.012	0.006	0.014
60.0	0.028	0.026	0.028	0.023	0.027	0.032	0.032	0.025	0.025	0.026	0.026	0.029
80.0	0.035	0.035	0.033	0.030	0.033	0.032	0.032	0.034	0.033	0.036	0.037	0.041
90.0	0.046	0.035	0.041	0.032	0.034	0.043	0.043	0.037	0.038	0.041	0.045	0.046
100.0	0.057	0.043	0.043	0.036	0.041	0.047	0.047	0.043	0.050	0.041	0.050	0.056
110.0	0.078	0.055	0.046	0.040	0.049	0.054	0.054	0.052	0.054	0.055	0.063	0.070
120.0	0.088	0.070	0.049	0.042	0.058	0.063	0.063	0.062	0.068	0.080	0.089	0.084
130.0	0.106	0.117	0.057	0.059	0.072	0.099	0.099	0.092	0.102	0.117	0.125	0.111
135.0	0.153	0.141	0.054	0.087	0.078	0.099	0.099	0.109	0.166	0.120	0.210	0.132