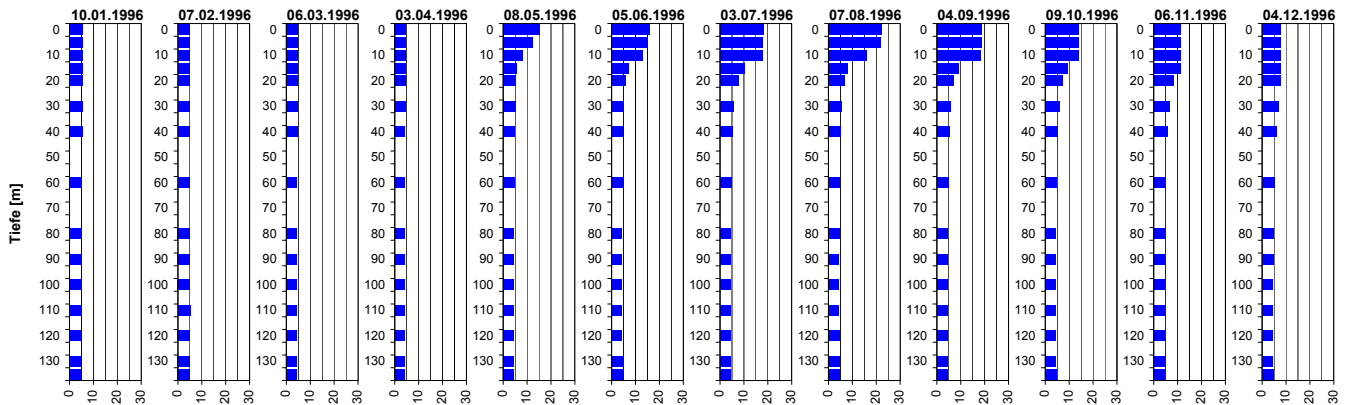
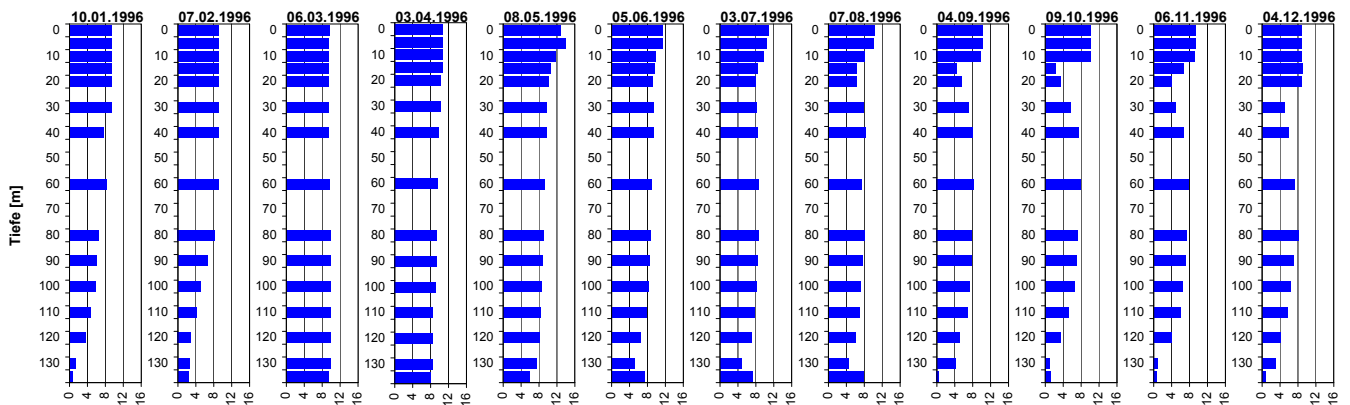


## Temperatur



Tiefe [m]	10.01.1996 Temp [°C]	07.02.1996 Temp [°C]	06.03.1996 Temp [°C]	03.04.1996 Temp [°C]	08.05.1996 Temp [°C]	05.06.1996 Temp [°C]	03.07.1996 Temp [°C]	07.08.1996 Temp [°C]	04.09.1996 Temp [°C]	09.10.1996 Temp [°C]	06.11.1996 Temp [°C]	04.12.1996 Temp [°C]
0.0	5.7	4.9	4.6	4.7	15.1	16.0	18.1	22.4	18.5	13.9	11.3	7.6
5.0	5.6	4.9	4.6	4.7	12.5	15.1	17.8	22.0	18.5	14.0	11.3	7.6
10.0	5.6	4.9	4.6	4.6	8.0	13.2	17.6	16.0	18.2	14.0	11.3	7.6
15.0	5.6	4.9	4.6	4.6	5.6	7.3	10.4	8.3	8.9	9.3	11.1	7.6
20.0	5.6	4.9	4.6	4.6	5.2	5.9	7.6	6.8	7.1	7.2	8.3	7.6
30.0	5.6	4.9	4.6	4.4	5.0	5.1	5.6	5.6	5.8	6.0	6.8	7.0
40.0	5.6	4.9	4.6	4.3	4.9	4.8	5.2	5.3	5.3	5.3	5.7	5.9
60.0	5.3	4.9	4.5	4.2	4.6	4.6	4.6	4.8	4.8	4.7	4.8	5.0
80.0	5.1	5.0	4.4	4.1	4.4	4.4	4.4	4.6	4.5	4.5	4.6	4.6
90.0	5.1	5.0	4.4	4.1	4.4	4.4	4.4	4.5	4.5	4.5	4.5	4.6
100.0	5.0	5.0	4.3	4.1	4.4	4.4	4.4	4.5	4.5	4.5	4.5	4.5
110.0	5.0	5.1	4.3	4.1	4.4	4.4	4.4	4.5	4.5	4.5	4.5	4.5
120.0	4.9	5.0	4.3	4.1	4.4	4.4	4.4	4.6	4.5	4.5	4.5	4.5
130.0	4.9	5.0	4.3	4.1	4.5	4.5	4.5	4.6	4.5	4.5	4.5	4.5
135.0	4.9	5.0	4.3	4.1	4.4	4.5	4.5	4.6	4.5	4.6	4.5	4.6

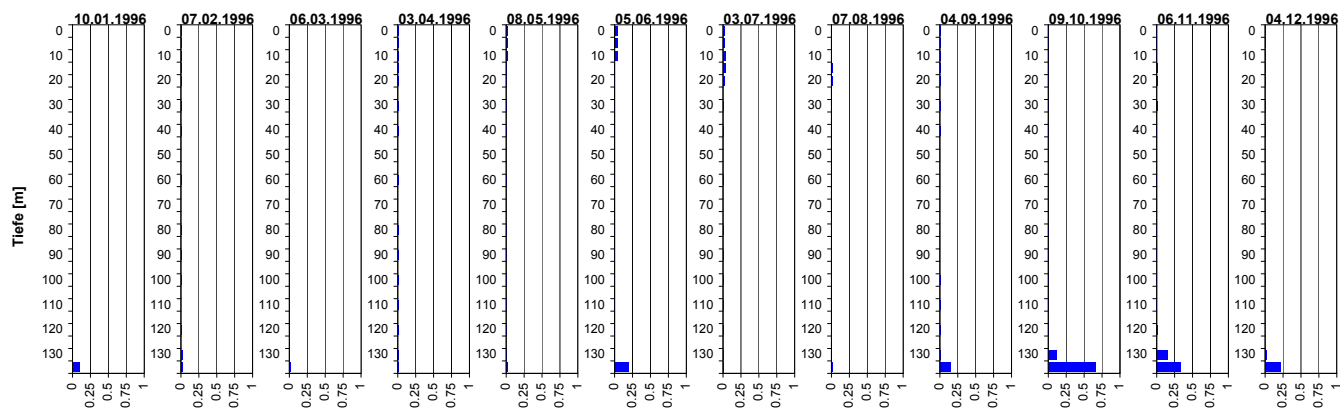
## Sauerstoff (O<sub>2</sub>)



Tiefe [m]	10.01.1996 O <sub>2</sub> [mg O <sub>2</sub> /l]	07.02.1996 O <sub>2</sub> [mg O <sub>2</sub> /l]	06.03.1996 O <sub>2</sub> [mg O <sub>2</sub> /l]	03.04.1996 O <sub>2</sub> [mg O <sub>2</sub> /l]	08.05.1996 O <sub>2</sub> [mg O <sub>2</sub> /l]	05.06.1996 O <sub>2</sub> [mg O <sub>2</sub> /l]	03.07.1996 O <sub>2</sub> [mg O <sub>2</sub> /l]	07.08.1996 O <sub>2</sub> [mg O <sub>2</sub> /l]	04.09.1996 O <sub>2</sub> [mg O <sub>2</sub> /l]	09.10.1996 O <sub>2</sub> [mg O <sub>2</sub> /l]	06.11.1996 O <sub>2</sub> [mg O <sub>2</sub> /l]	04.12.1996 O <sub>2</sub> [mg O <sub>2</sub> /l]
0.0	9.5	9.0	9.6	10.8	12.8	11.4	10.8	10.4	10.2	10.1	9.4	8.8
5.0	9.5	9.0	9.5	10.7	13.9	11.4	10.5	10.2	10.2	10.1	9.3	8.9
10.0	9.6	9.0	9.5	10.8	11.8	10.0	9.8	8.1	9.9	10.1	9.1	8.9
15.0	9.6	9.0	9.5	10.7	10.6	9.6	8.5	6.4	4.4	2.3	6.6	9.0
20.0	9.5	9.1	9.4	10.4	10.1	9.3	7.9	6.4	5.5	3.4	4.1	8.8
30.0	9.5	9.0	9.4	10.2	9.8	9.4	8.2	7.9	7.1	5.8	5.0	4.9
40.0	7.8	9.0	9.5	9.8	9.7	9.5	8.4	8.3	8.0	7.5	6.7	5.9
60.0	8.4	9.0	9.7	9.6	9.3	9.0	8.7	7.5	8.3	8.0	7.9	7.2
80.0	6.7	8.3	9.8	9.5	9.0	8.8	8.6	8.1	7.9	7.3	7.5	8.1
90.0	6.1	6.5	9.8	9.4	8.8	8.6	8.3	7.6	7.7	7.0	7.1	7.0
100.0	5.8	5.1	9.9	9.2	8.6	8.2	8.1	7.3	7.4	6.7	6.5	6.5
110.0	4.9	4.1	10.0	8.6	8.5	7.8	7.7	7.0	6.9	5.3	6.0	5.8
120.0	3.8	2.9	9.9	8.5	8.2	6.6	7.0	6.2	5.0	3.5	4.1	4.1
130.0	1.5	2.5	10.0	8.4	7.4	5.2	4.7	4.6	4.2	0.9	1.0	2.9
135.0	0.9	2.4	9.5	8.1	6.0	7.4	7.4	7.8	0.5	1.2	0.8	0.7

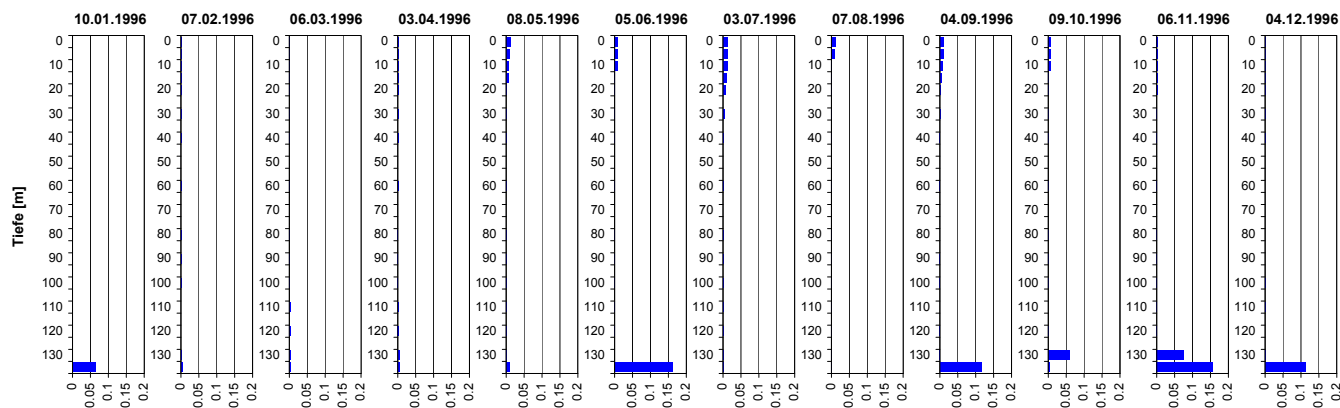
## Tiefenprofile Zürichsee 1996

### Ammonium (NH<sub>4</sub>)



Tiefe [m]	10.01.1996 NH4-N [mg N/l]	07.02.1996 NH4-N [mg N/l]	06.03.1996 NH4-N [mg N/l]	03.04.1996 NH4-N [mg N/l]	08.05.1996 NH4-N [mg N/l]	05.06.1996 NH4-N [mg N/l]	03.07.1996 NH4-N [mg N/l]	07.08.1996 NH4-N [mg N/l]	04.09.1996 NH4-N [mg N/l]	09.10.1996 NH4-N [mg N/l]	06.11.1996 NH4-N [mg N/l]	04.12.1996 NH4-N [mg N/l]
0.0	0.00	0.01	0.01	0.01	0.03	0.04	0.02	0.01	0.01	0.01	0.01	0.01
5.0	0.00	0.01	0.00	0.01	0.03	0.04	0.02	0.01	0.01	0.01	0.01	0.01
10.0	0.01	0.01	0.01	0.01	0.02	0.05	0.03	0.01	0.01	0.01	0.01	0.01
15.0	0.00	0.01	0.01	0.01	0.01	0.01	0.03	0.02	0.01	0.01	0.01	0.01
20.0	0.00	0.01	0.01	0.01	0.01	0.01	0.02	0.01	0.01	0.01	0.01	0.01
30.0	0.00	0.01	0.01	0.01	0.01	0.01	0.01	0.01	0.01	0.01	0.01	0.01
40.0	0.00	0.01	0.01	0.01	0.01	0.01	0.01	0.01	0.01	0.01	0.01	0.01
60.0	0.00	0.01	0.01	0.01	0.01	0.01	0.01	0.01	0.00	0.00	0.01	0.00
80.0	0.00	0.01	0.01	0.01	0.01	0.01	0.01	0.01	0.00	0.01	0.01	0.01
90.0	0.00	0.01	0.01	0.01	0.01	0.01	0.01	0.01	0.00	0.01	0.01	0.00
100.0	0.00	0.01	0.01	0.01	0.01	0.01	0.01	0.01	0.01	0.01	0.01	0.01
110.0	0.00	0.00	0.01	0.01	0.01	0.01	0.01	0.01	0.01	0.01	0.01	0.00
120.0	0.00	0.01	0.01	0.01	0.01	0.01	0.01	0.01	0.01	0.01	0.01	0.00
130.0	0.00	0.02	0.01	0.02	0.01	0.01	0.01	0.01	0.01	0.12	0.15	0.02
135.0	0.10	0.02	0.02	0.01	0.03	0.21	0.01	0.02	0.15	0.66	0.34	0.22

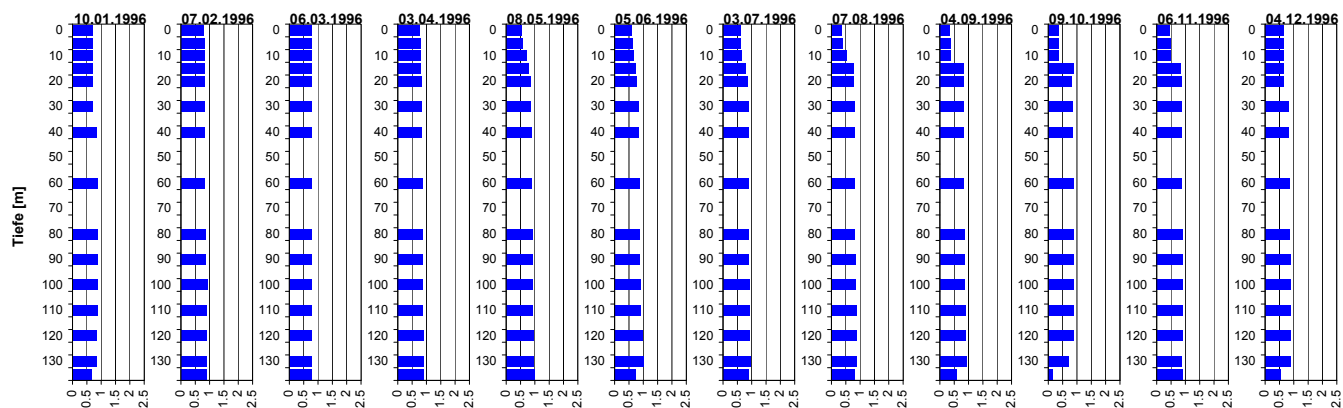
### Nitrit (NO<sub>2</sub>)



Tiefe [m]	10.01.1996 NO2-N [mg N/l]	07.02.1996 NO2-N [mg N/l]	06.03.1996 NO2-N [mg N/l]	03.04.1996 NO2-N [mg N/l]	08.05.1996 NO2-N [mg N/l]	05.06.1996 NO2-N [mg N/l]	03.07.1996 NO2-N [mg N/l]	07.08.1996 NO2-N [mg N/l]	04.09.1996 NO2-N [mg N/l]	09.10.1996 NO2-N [mg N/l]	06.11.1996 NO2-N [mg N/l]	04.12.1996 NO2-N [mg N/l]
0.0	0.002	0.002	0.001	0.002	0.012	0.010	0.012	0.011	0.009	0.007	0.003	0.002
5.0	0.002	0.002	0.001	0.002	0.009	0.010	0.012	0.011	0.009	0.008	0.003	0.002
10.0	0.002	0.002	0.001	0.002	0.006	0.010	0.011	0.003	0.008	0.007	0.003	0.003
15.0	0.002	0.001	0.001	0.002	0.007	0.002	0.009	0.002	0.005	0.002	0.002	0.002
20.0	0.002	0.001	0.001	0.002	0.002	0.001	0.008	0.002	0.003	0.001	0.002	0.003
30.0	0.002	0.002	0.001	0.002	0.001	0.001	0.003	0.001	0.002	0.001	0.001	0.001
40.0	0.001	0.001	0.001	0.001	0.001	0.001	0.002	0.001	0.001	0.001	0.001	0.001
60.0	0.000	0.001	0.002	0.001	0.001	0.001	0.001	0.001	0.001	0.001	0.001	0.000
80.0	0.001	0.001	0.002	0.001	0.001	0.001	0.001	0.001	0.000	0.001	0.001	0.000
90.0	0.001	0.001	0.002	0.001	0.001	0.001	0.001	0.001	0.001	0.001	0.001	0.000
100.0	0.000	0.001	0.003	0.001	0.001	0.001	0.001	0.001	0.001	0.001	0.001	0.001
110.0	0.000	0.000	0.003	0.002	0.001	0.001	0.001	0.001	0.000	0.000	0.001	0.001
120.0	0.000	0.000	0.003	0.003	0.001	0.001	0.001	0.001	0.001	0.002	0.001	0.000
130.0	0.000	0.002	0.004	0.005	0.001	0.000	0.001	0.001	0.001	0.061	0.076	0.003
135.0	0.065	0.003	0.004	0.005	0.010	0.162	0.001	0.002	0.116	0.003	0.157	0.112

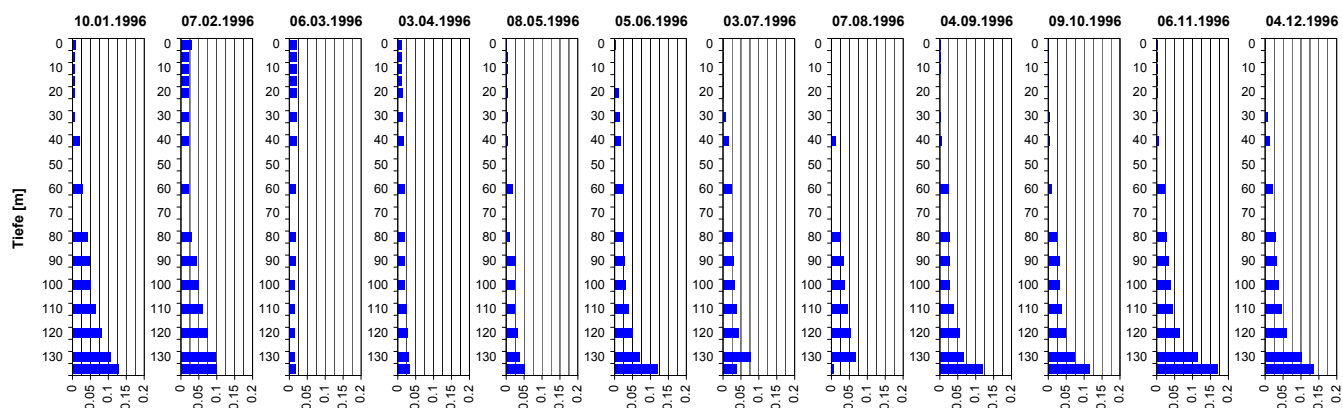
## Tiefenprofile Zürichsee 1996

### Nitrat (NO<sub>3</sub>)



Tiefe [m]	10.01.1996 NO <sub>3</sub> -N [mg N/l]	07.02.1996 NO <sub>3</sub> -N [mg N/l]	06.03.1996 NO <sub>3</sub> -N [mg N/l]	03.04.1996 NO <sub>3</sub> -N [mg N/l]	08.05.1996 NO <sub>3</sub> -N [mg N/l]	05.06.1996 NO <sub>3</sub> -N [mg N/l]	03.07.1996 NO <sub>3</sub> -N [mg N/l]	07.08.1996 NO <sub>3</sub> -N [mg N/l]	04.09.1996 NO <sub>3</sub> -N [mg N/l]	09.10.1996 NO <sub>3</sub> -N [mg N/l]	06.11.1996 NO <sub>3</sub> -N [mg N/l]	04.12.1996 NO <sub>3</sub> -N [mg N/l]
0.0	0.7	0.8	0.8	0.8	0.5	0.6	0.6	0.4	0.4	0.4	0.5	0.6
5.0	0.7	0.8	0.8	0.8	0.6	0.6	0.6	0.4	0.4	0.4	0.5	0.6
10.0	0.7	0.8	0.8	0.8	0.7	0.7	0.6	0.6	0.4	0.4	0.5	0.6
15.0	0.7	0.8	0.8	0.8	0.8	0.7	0.8	0.8	0.8	0.9	0.8	0.6
20.0	0.7	0.8	0.8	0.8	0.8	0.8	0.8	0.8	0.8	0.8	0.9	0.7
30.0	0.7	0.8	0.8	0.8	0.9	0.8	0.9	0.8	0.8	0.8	0.9	0.8
40.0	0.9	0.8	0.8	0.8	0.9	0.8	0.9	0.8	0.8	0.9	0.9	0.8
60.0	0.9	0.8	0.8	0.9	0.9	0.9	0.9	0.8	0.8	0.9	0.9	0.9
80.0	0.9	0.9	0.8	0.9	0.9	0.9	0.9	0.8	0.9	0.9	0.9	0.9
90.0	0.9	0.9	0.8	0.9	0.9	0.9	0.9	0.8	0.9	0.9	0.9	0.9
100.0	0.9	0.9	0.8	0.9	0.9	0.9	0.9	0.9	0.9	0.9	0.9	0.9
110.0	0.9	0.9	0.8	0.9	0.9	0.9	0.9	0.9	0.9	0.9	0.9	0.9
120.0	0.9	0.9	0.8	0.9	1.0	1.0	0.9	0.9	0.9	0.9	0.9	0.9
130.0	0.9	0.9	0.8	0.9	1.0	1.0	1.0	0.9	0.9	0.7	0.9	0.9
135.0	0.7	0.9	0.8	0.9	1.0	0.7	0.9	0.8	0.6	0.2	0.9	0.6

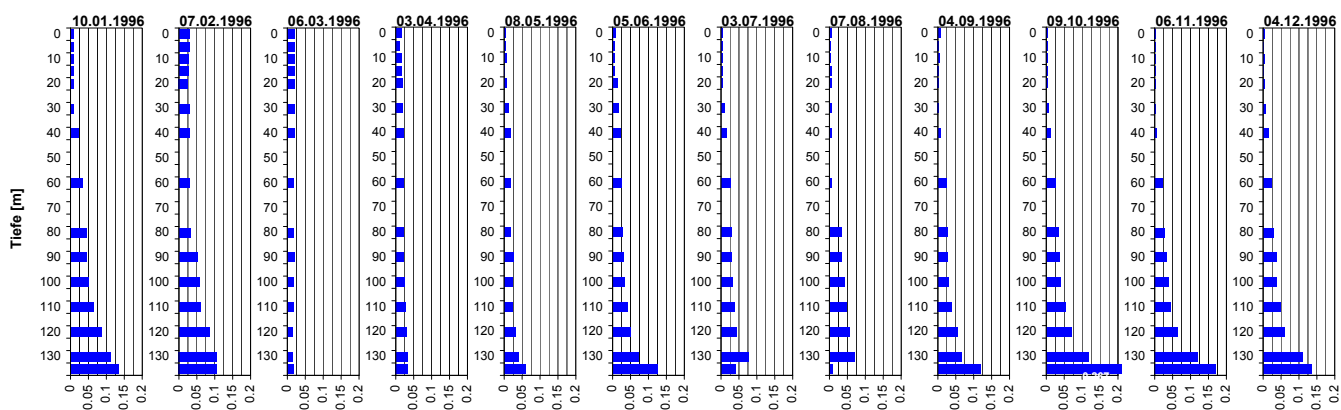
### Phosphat (PO<sub>4</sub>)



Tiefe [m]	10.01.1996 PO <sub>4</sub> -P [mg P/l]	07.02.1996 PO <sub>4</sub> -P [mg P/l]	06.03.1996 PO <sub>4</sub> -P [mg P/l]	03.04.1996 PO <sub>4</sub> -P [mg P/l]	08.05.1996 PO <sub>4</sub> -P [mg P/l]	05.06.1996 PO <sub>4</sub> -P [mg P/l]	03.07.1996 PO <sub>4</sub> -P [mg P/l]	07.08.1996 PO <sub>4</sub> -P [mg P/l]	04.09.1996 PO <sub>4</sub> -P [mg P/l]	09.10.1996 PO <sub>4</sub> -P [mg P/l]	06.11.1996 PO <sub>4</sub> -P [mg P/l]	04.12.1996 PO <sub>4</sub> -P [mg P/l]
0.0	0.010	0.029	0.021	0.010	0.002	0.003	0.001	0.002	0.002	0.001	0.003	0.002
5.0	0.007	0.021	0.021	0.011	0.003	0.002	0.001	0.002	0.002	0.001	0.002	0.002
10.0	0.006	0.022	0.020	0.012	0.003	0.002	0.001	0.001	0.001	0.001	0.003	0.001
15.0	0.006	0.020	0.020	0.012	0.001	0.001	0.001	0.001	0.000	0.001	0.002	0.002
20.0	0.006	0.020	0.020	0.014	0.003	0.013	0.002	0.002	0.000	0.001	0.002	0.002
30.0	0.007	0.022	0.021	0.015	0.003	0.014	0.007	0.002	0.001	0.005	0.004	0.007
40.0	0.020	0.020	0.021	0.017	0.003	0.018	0.014	0.013	0.006	0.005	0.007	0.012
60.0	0.030	0.022	0.018	0.018	0.018	0.023	0.024	0.024	0.024	0.009	0.021	0.022
80.0	0.043	0.029	0.017	0.018	0.009	0.024	0.025	0.026	0.026	0.024	0.028	0.028
90.0	0.049	0.044	0.019	0.018	0.025	0.028	0.028	0.034	0.027	0.031	0.034	0.033
100.0	0.051	0.050	0.015	0.020	0.023	0.032	0.032	0.038	0.028	0.031	0.040	0.038
110.0	0.064	0.060	0.016	0.026	0.023	0.040	0.036	0.046	0.039	0.037	0.046	0.047
120.0	0.082	0.073	0.016	0.029	0.031	0.052	0.042	0.055	0.055	0.048	0.065	0.061
130.0	0.108	0.096	0.016	0.031	0.038	0.071	0.076	0.069	0.065	0.075	0.114	0.102
135.0	0.128	0.099	0.018	0.034	0.051	0.120	0.038	0.008	0.119	0.115	0.170	0.134

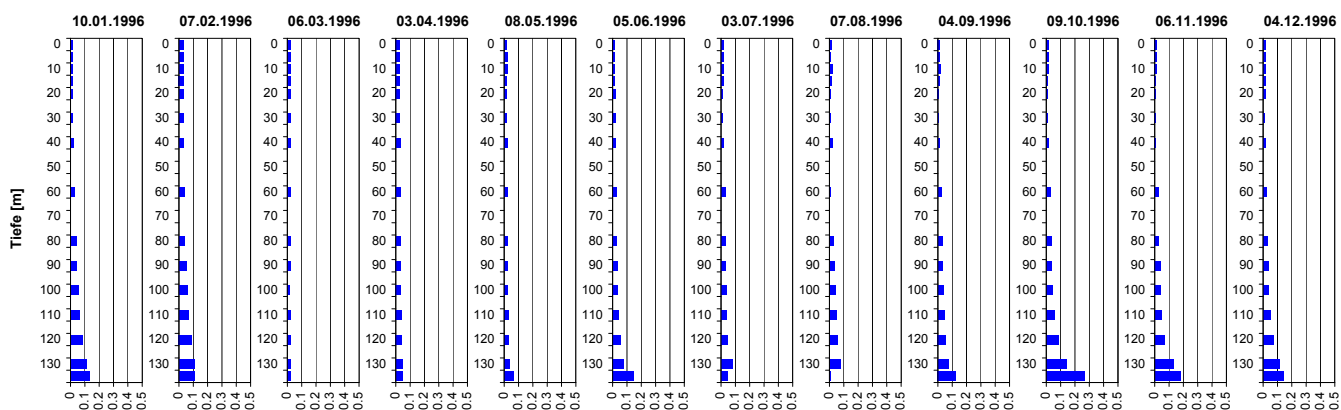
## Tiefenprofile Zürichsee 1996

### Gelöster Phosphor (P<sub>gel</sub>)



Tiefe [m]	10.01.1996 P-gel [mg P/l]	07.02.1996 P-gel [mg P/l]	06.03.1996 P-gel [mg P/l]	03.04.1996 P-gel [mg P/l]	08.05.1996 P-gel [mg P/l]	05.06.1996 P-gel [mg P/l]	03.07.1996 P-gel [mg P/l]	07.08.1996 P-gel [mg P/l]	04.09.1996 P-gel [mg P/l]	09.10.1996 P-gel [mg P/l]	06.11.1996 P-gel [mg P/l]	04.12.1996 P-gel [mg P/l]
0.0	0.010	0.029	0.021	0.016	0.004	0.008	0.005	0.006	0.007	0.005	0.003	0.003
5.0	0.009	0.029	0.021	0.012	0.004	0.006	0.003	0.005	0.003	0.004	0.002	0.002
10.0	0.010	0.027	0.020	0.017	0.007	0.006	0.003	0.005	0.005	0.004	0.002	0.003
15.0	0.009	0.027	0.021	0.017	0.001	0.005	0.003	0.006	0.003	0.003	0.002	0.002
20.0	0.010	0.025	0.021	0.020	0.007	0.015	0.003	0.006	0.003	0.004	0.002	0.003
30.0	0.010	0.028	0.021	0.020	0.011	0.017	0.009	0.006	0.003	0.008	0.004	0.007
40.0	0.023	0.029	0.021	0.023	0.018	0.022	0.015	0.006	0.008	0.012	0.007	0.014
60.0	0.034	0.029	0.019	0.023	0.018	0.025	0.025	0.008	0.024	0.026	0.023	0.024
80.0	0.046	0.032	0.017	0.023	0.018	0.028	0.028	0.034	0.026	0.035	0.028	0.030
90.0	0.047	0.052	0.020	0.023	0.027	0.031	0.029	0.035	0.027	0.036	0.034	0.037
100.0	0.051	0.058	0.019	0.025	0.024	0.035	0.033	0.042	0.030	0.041	0.040	0.038
110.0	0.064	0.061	0.018	0.028	0.023	0.042	0.037	0.049	0.039	0.053	0.046	0.050
120.0	0.087	0.085	0.016	0.030	0.032	0.052	0.044	0.057	0.055	0.072	0.065	0.061
130.0	0.114	0.106	0.016	0.032	0.040	0.074	0.077	0.071	0.065	0.117	0.121	0.110
135.0	0.134	0.106	0.018	0.034	0.060	0.125	0.041	0.009	0.119	0.267	0.170	0.134

### Gesamt-Phosphor (P<sub>tot</sub>)



Tiefe [m]	10.01.1996 P-tot [mg P/l]	07.02.1996 P-tot [mg P/l]	06.03.1996 P-tot [mg P/l]	03.04.1996 P-tot [mg P/l]	08.05.1996 P-tot [mg P/l]	05.06.1996 P-tot [mg P/l]	03.07.1996 P-tot [mg P/l]	07.08.1996 P-tot [mg P/l]	04.09.1996 P-tot [mg P/l]	09.10.1996 P-tot [mg P/l]	06.11.1996 P-tot [mg P/l]	04.12.1996 P-tot [mg P/l]
0.0	0.020	0.034	0.026	0.028	0.014	0.015	0.015	0.014	0.014	0.020	0.016	0.015
5.0	0.018	0.034	0.027	0.028	0.026	0.017	0.015	0.013	0.015	0.016	0.015	0.015
10.0	0.018	0.029	0.024	0.029	0.023	0.014	0.015	0.026	0.017	0.017	0.014	0.015
15.0	0.020	0.035	0.024	0.030	0.014	0.012	0.014	0.014	0.012	0.012	0.008	0.014
20.0	0.019	0.033	0.025	0.030	0.014	0.019	0.008	0.013	0.008	0.012	0.008	0.014
30.0	0.019	0.033	0.026	0.030	0.019	0.021	0.013	0.011	0.006	0.013	0.008	0.011
40.0	0.026	0.033	0.025	0.033	0.024	0.025	0.018	0.022	0.013	0.014	0.010	0.016
60.0	0.034	0.036	0.024	0.032	0.026	0.031	0.028	0.012	0.026	0.028	0.025	0.026
80.0	0.048	0.040	0.022	0.033	0.021	0.030	0.030	0.034	0.032	0.036	0.030	0.033
90.0	0.047	0.054	0.023	0.035	0.027	0.034	0.031	0.041	0.032	0.040	0.043	0.038
100.0	0.057	0.061	0.020	0.035	0.024	0.037	0.035	0.048	0.037	0.045	0.043	0.041
110.0	0.066	0.066	0.023	0.042	0.029	0.042	0.038	0.053	0.043	0.057	0.048	0.053
120.0	0.087	0.090	0.024	0.043	0.034	0.056	0.046	0.060	0.057	0.086	0.068	0.071
130.0	0.115	0.107	0.022	0.045	0.041	0.079	0.078	0.080	0.073	0.143	0.130	0.112
135.0	0.135	0.111	0.025	0.048	0.067	0.151	0.046	0.012	0.126	0.271	0.179	0.139