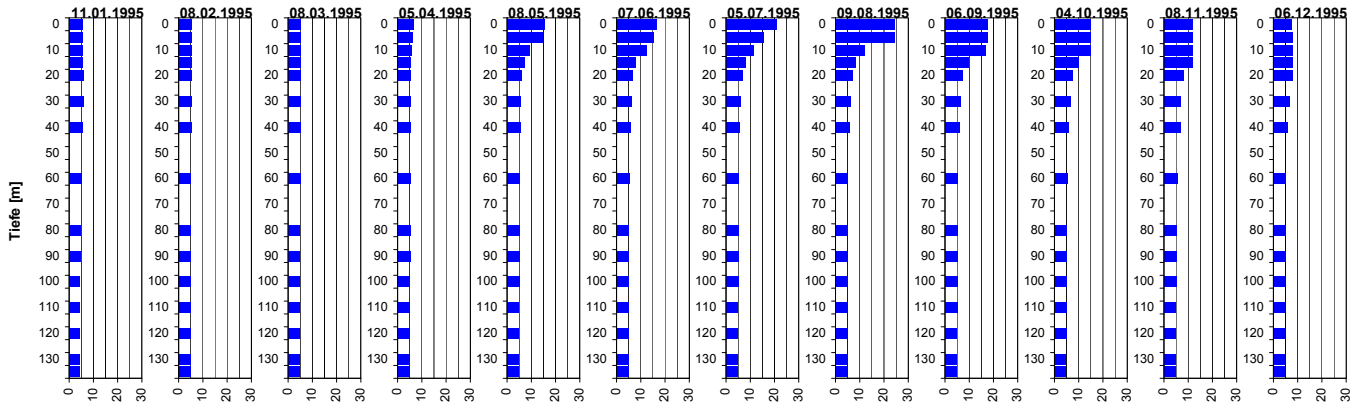
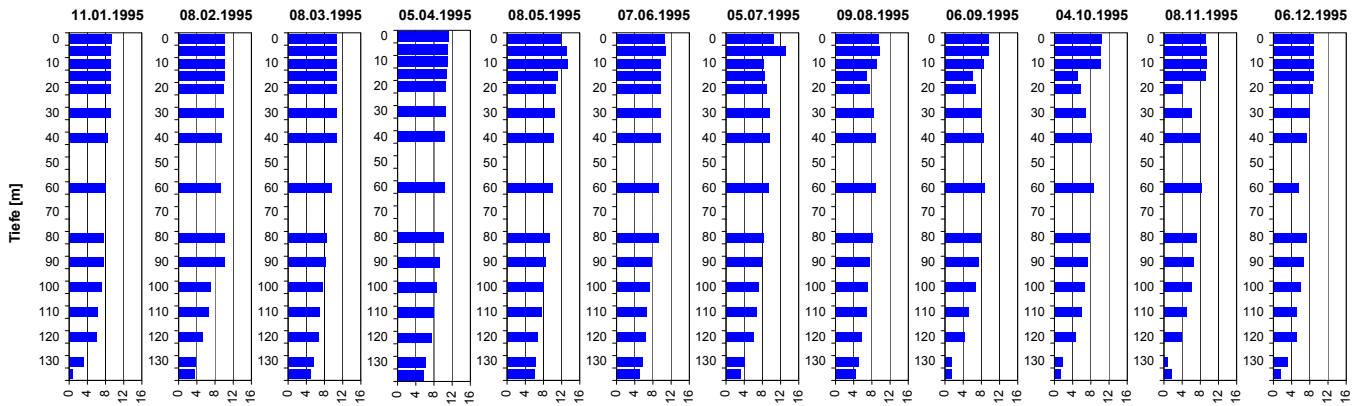


## Temperatur



Tiefe [m]	11.01.1995 Temp [°C]	08.02.1995 Temp [°C]	08.03.1995 Temp [°C]	05.04.1995 Temp [°C]	08.05.1995 Temp [°C]	07.06.1995 Temp [°C]	05.07.1995 Temp [°C]	09.08.1995 Temp [°C]	06.09.1995 Temp [°C]	04.10.1995 Temp [°C]	08.11.1995 Temp [°C]	06.12.1995 Temp [°C]
0.0	5.4	5.4	5.2	6.5	15.6	16.7	21.0	24.4	17.6	15.2	11.7	7.7
5.0	5.5	5.4	5.2	6.4	14.5	15.4	15.4	24.5	17.5	15.1	11.8	7.9
10.0	5.6	5.4	5.2	5.8	9.2	12.7	11.4	12.1	16.7	15.1	11.8	7.9
15.0	5.7	5.4	5.2	5.5	7.0	7.9	8.1	8.4	9.6	10.2	11.6	7.9
20.0	5.8	5.4	5.2	5.5	6.1	6.7	6.9	7.2	7.4	7.7	8.0	7.9
30.0	5.8	5.4	5.2	5.5	5.6	6.1	6.0	6.3	6.3	6.7	6.9	6.7
40.0	5.7	5.4	5.2	5.5	5.4	5.7	5.6	5.9	5.9	6.1	6.7	6.0
60.0	5.1	5.2	5.0	5.4	5.2	5.4	5.3	5.3	5.3	5.5	5.7	5.2
80.0	4.7	5.2	4.9	5.4	5.1	5.2	5.1	5.2	5.2	5.2	5.3	5.0
90.0	4.6	5.2	4.9	5.3	5.1	5.2	5.1	5.1	5.1	5.1	5.2	5.0
100.0	4.5	5.0	4.8	5.2	5.0	5.2	5.0	5.1	5.0	5.1	5.1	4.9
110.0	4.4	5.0	4.7	5.2	4.9	5.2	4.9	5.0	5.0	5.0	4.9	4.8
120.0	4.4	5.0	4.7	5.2	4.9	5.0	4.9	5.0	4.9	5.0	4.9	4.8
130.0	4.4	5.0	4.7	5.1	4.8	5.0	4.9	4.9	4.9	4.9	4.9	4.8
135.0	4.4	4.8	4.7	5.1	4.8	5.0	4.9	4.9	4.9	4.9	4.8	4.7

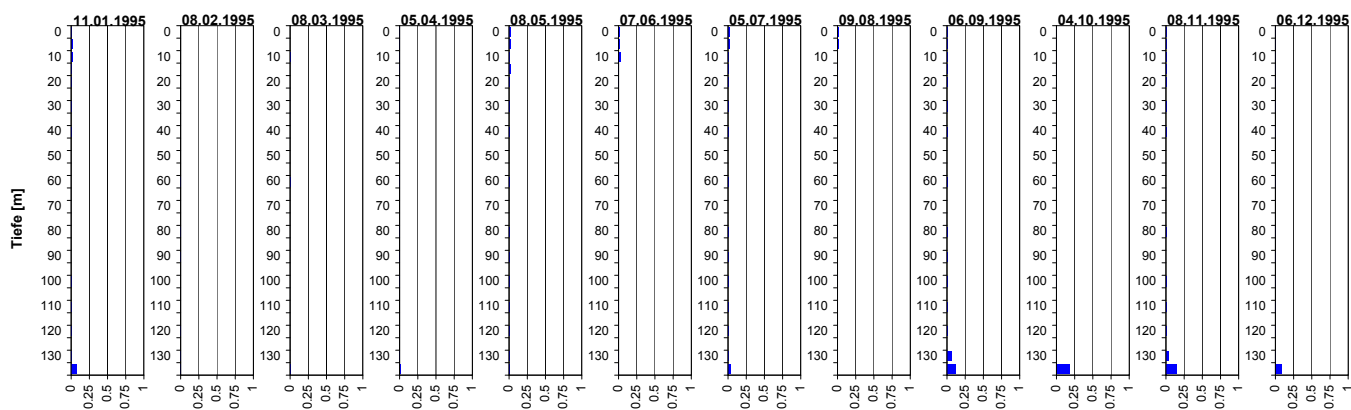
## Sauerstoff (O<sub>2</sub>)



Tiefe [m]	11.01.1995 O <sub>2</sub> [mg O <sub>2</sub> /l]	08.02.1995 O <sub>2</sub> [mg O <sub>2</sub> /l]	08.03.1995 O <sub>2</sub> [mg O <sub>2</sub> /l]	05.04.1995 O <sub>2</sub> [mg O <sub>2</sub> /l]	08.05.1995 O <sub>2</sub> [mg O <sub>2</sub> /l]	07.06.1995 O <sub>2</sub> [mg O <sub>2</sub> /l]	05.07.1995 O <sub>2</sub> [mg O <sub>2</sub> /l]	09.08.1995 O <sub>2</sub> [mg O <sub>2</sub> /l]	06.09.1995 O <sub>2</sub> [mg O <sub>2</sub> /l]	04.10.1995 O <sub>2</sub> [mg O <sub>2</sub> /l]	08.11.1995 O <sub>2</sub> [mg O <sub>2</sub> /l]	06.12.1995 O <sub>2</sub> [mg O <sub>2</sub> /l]
0.0	9.3	10.1	10.6	11.2	11.7	10.6	10.5	9.6	9.6	10.4	9.2	8.9
5.0	9.1	10.1	10.6	11.2	13.0	10.9	13.1	9.7	9.6	10.2	9.3	8.9
10.0	9.1	10.1	10.6	11.1	13.3	9.9	8.3	9.1	8.5	10.2	9.3	8.9
15.0	9.1	10.1	10.6	10.9	11.1	9.8	8.5	6.9	6.0	5.3	9.2	8.9
20.0	9.1	10.0	10.6	10.6	10.6	9.7	9.0	7.6	6.6	5.8	4.2	8.8
30.0	9.1	9.9	10.6	10.7	10.4	9.8	9.6	8.4	8.1	7.0	6.0	8.1
40.0	8.5	9.5	10.6	10.5	10.2	9.8	9.5	9.0	8.4	8.2	7.8	7.4
60.0	8.0	9.3	9.5	10.4	10.0	9.3	9.3	8.9	8.8	8.7	8.2	5.7
80.0	7.5	10.2	8.4	10.1	9.3	9.4	8.2	8.2	7.8	7.9	7.1	7.4
90.0	7.6	10.1	8.2	9.2	8.4	7.7	7.8	7.6	7.4	7.5	6.4	6.8
100.0	7.2	7.0	7.6	8.7	8.0	7.3	7.2	7.2	6.8	6.6	6.1	6.0
110.0	6.2	6.7	6.9	8.0	7.6	6.7	6.8	6.8	5.2	6.0	4.9	5.2
120.0	6.1	5.3	6.6	7.6	6.7	6.5	6.0	5.9	4.2	4.7	3.9	5.2
130.0	3.2	3.9	5.5	6.1	6.3	5.7	4.1	5.1	1.4	1.9	0.8	3.2
135.0	0.9	3.5	5.0	5.8	6.0	5.2	3.2	4.5	1.4	1.5	1.6	1.6

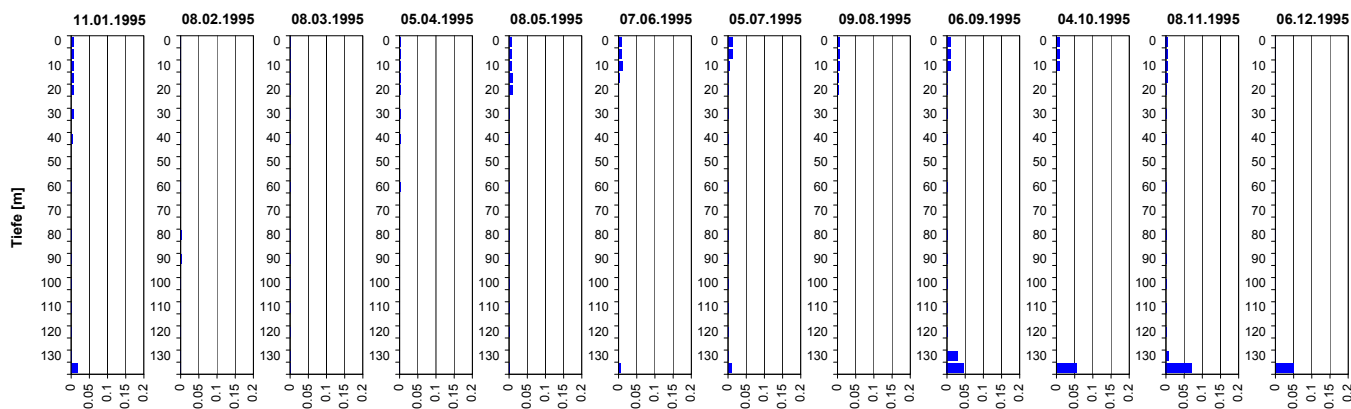
## Tiefenprofile Zürichsee 1995

### Ammonium (NH<sub>4</sub>)



Tiefe [m]	11.01.1995 NH4-N [mg N/l]	08.02.1995 NH4-N [mg N/l]	08.03.1995 NH4-N [mg N/l]	05.04.1995 NH4-N [mg N/l]	08.05.1995 NH4-N [mg N/l]	07.06.1995 NH4-N [mg N/l]	05.07.1995 NH4-N [mg N/l]	09.08.1995 NH4-N [mg N/l]	06.09.1995 NH4-N [mg N/l]	04.10.1995 NH4-N [mg N/l]	08.11.1995 NH4-N [mg N/l]	06.12.1995 NH4-N [mg N/l]
0.0	0.01	0.00	0.00	0.01	0.02	0.02	0.02	0.02	0.01	0.01	0.01	0.01
5.0	0.02	0.00	0.00	0.01	0.02	0.02	0.02	0.02	0.01	0.01	0.01	0.01
10.0	0.02	0.00	0.01	0.01	0.01	0.04	0.01	0.01	0.01	0.01	0.01	0.01
15.0	0.01	0.00	0.00	0.01	0.02	0.01	0.01	0.01	0.01	0.01	0.01	0.01
20.0	0.01	0.00	0.00	0.01	0.01	0.01	0.01	0.01	0.01	0.01	0.01	0.01
30.0	0.01	0.00	0.00	0.01	0.01	0.01	0.01	0.01	0.01	0.01	0.01	0.01
40.0	0.01	0.00	0.00	0.01	0.01	0.01	0.01	0.00	0.01	0.01	0.01	0.01
60.0	0.00	0.01	0.01	0.01	0.01	0.01	0.01	0.00	0.01	0.01	0.00	0.01
80.0	0.00	0.01	0.00	0.01	0.01	0.01	0.01	0.00	0.01	0.01	0.01	0.01
90.0	0.00	0.01	0.00	0.01	0.01	0.01	0.01	0.00	0.01	0.01	0.00	0.01
100.0	0.01	0.00	0.00	0.01	0.01	0.01	0.01	0.01	0.01	0.01	0.01	0.01
110.0	0.01	0.00	0.00	0.00	0.01	0.01	0.01	0.01	0.01	0.01	0.01	0.01
120.0	0.01	0.01	0.00	0.00	0.01	0.01	0.01	0.01	0.01	0.01	0.01	0.01
130.0	0.01	0.01	0.00	0.01	0.01	0.01	0.01	0.01	0.01	0.01	0.04	0.01
135.0	0.07	0.01	0.01	0.01	0.01	0.01	0.03	0.01	0.12	0.18	0.14	0.09

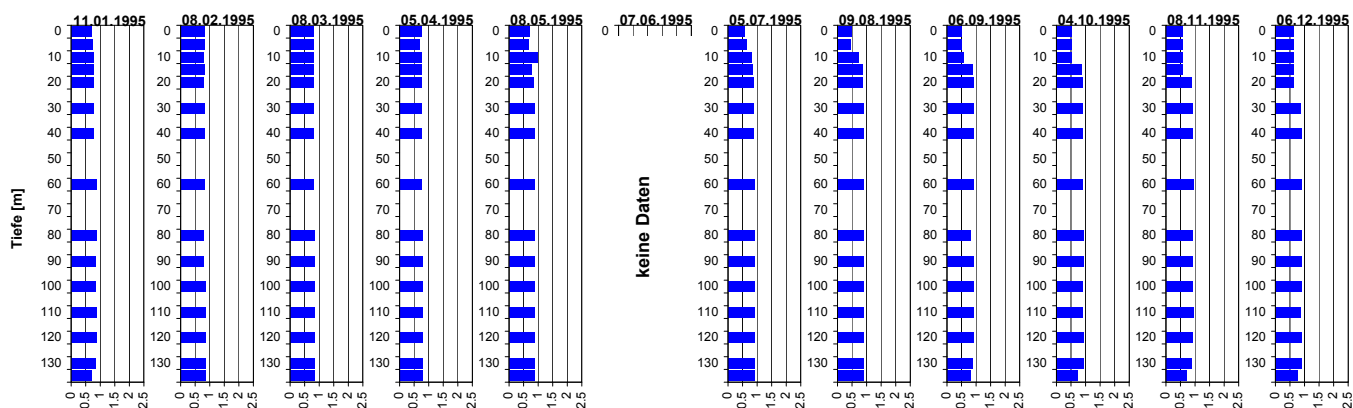
### Nitrit (NO<sub>2</sub>)



Tiefe [m]	11.01.1995 NO2-N [mg N/l]	08.02.1995 NO2-N [mg N/l]	08.03.1995 NO2-N [mg N/l]	05.04.1995 NO2-N [mg N/l]	08.05.1995 NO2-N [mg N/l]	07.06.1995 NO2-N [mg N/l]	05.07.1995 NO2-N [mg N/l]	09.08.1995 NO2-N [mg N/l]	06.09.1995 NO2-N [mg N/l]	04.10.1995 NO2-N [mg N/l]	08.11.1995 NO2-N [mg N/l]	06.12.1995 NO2-N [mg N/l]
0.0	0.008	0.001	0.001	0.003	0.007	0.010	0.012	0.008	0.009	0.009	0.006	0.002
5.0	0.008	0.001	0.001	0.003	0.008	0.010	0.011	0.008	0.009	0.009	0.006	0.002
10.0	0.008	0.001	0.001	0.003	0.007	0.011	0.005	0.008	0.011	0.009	0.006	0.002
15.0	0.008	0.001	0.001	0.003	0.009	0.003	0.002	0.005	0.001	0.001	0.006	0.002
20.0	0.008	0.001	0.001	0.002	0.009	0.002	0.002	0.003	0.001	0.001	0.002	0.002
30.0	0.008	0.001	0.001	0.002	0.002	0.001	0.001	0.001	0.001	0.001	0.001	0.001
40.0	0.005	0.001	0.001	0.002	0.002	0.000	0.001	0.001	0.001	0.001	0.001	0.001
60.0	0.001	0.002	0.001	0.002	0.001	0.001	0.001	0.001	0.001	0.001	0.001	0.001
80.0	0.001	0.003	0.001	0.002	0.001	0.001	0.001	0.001	0.001	0.001	0.001	0.001
90.0	0.001	0.003	0.001	0.001	0.001	0.001	0.001	0.001	0.001	0.001	0.003	0.001
100.0	0.001	0.001	0.001	0.001	0.001	0.001	0.001	0.001	0.001	0.001	0.001	0.001
110.0	0.001	0.001	0.001	0.001	0.001	0.001	0.001	0.001	0.001	0.001	0.001	0.001
120.0	0.001	0.001	0.001	0.001	0.001	0.001	0.001	0.001	0.001	0.001	0.001	0.001
130.0	0.002	0.001	0.001	0.001	0.000	0.001	0.001	0.001	0.029	0.001	0.006	0.001
135.0	0.018	0.001	0.001	0.001	0.001	0.006	0.009	0.002	0.047	0.056	0.072	0.050

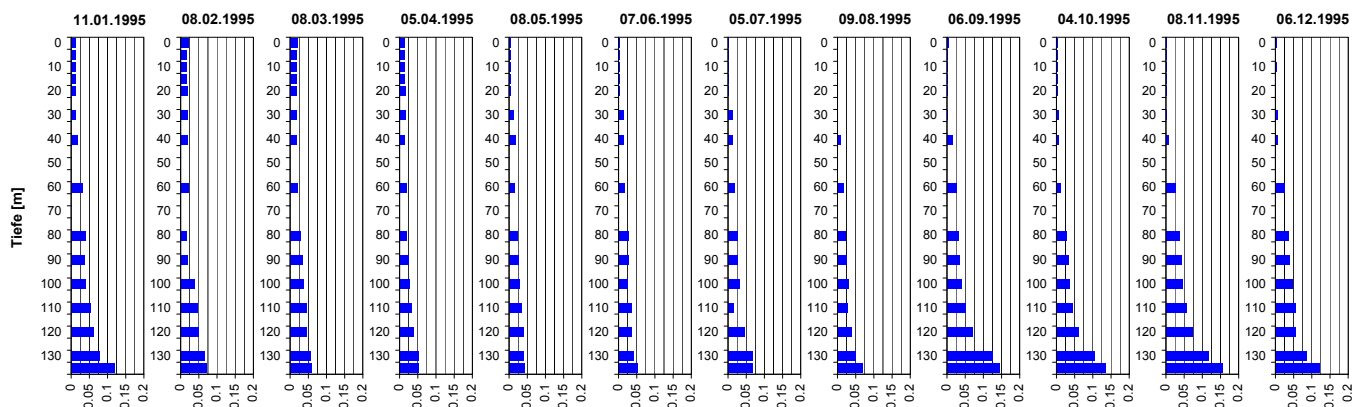
## Tiefenprofile Zürichsee 1995

### Nitrat (NO<sub>3</sub>)



Tiefe [m]	11.01.1995 NO3-N [mg N/l]	08.02.1995 NO3-N [mg N/l]	08.03.1995 NO3-N [mg N/l]	05.04.1995 NO3-N [mg N/l]	08.05.1995 NO3-N [mg N/l]	07.06.1995 NO3-N [mg N/l]	05.07.1995 NO3-N [mg N/l]	09.08.1995 NO3-N [mg N/l]	06.09.1995 NO3-N [mg N/l]	04.10.1995 NO3-N [mg N/l]	08.11.1995 NO3-N [mg N/l]	06.12.1995 NO3-N [mg N/l]
0.0	0.7	0.8	0.8	0.8	0.7		0.6	0.5	0.5	0.5	0.6	0.6
5.0	0.7	0.8	0.8	0.8	0.7		0.6	0.5	0.5	0.5	0.6	0.6
10.0	0.8	0.8	0.8	0.8	1.0		0.8	0.7	0.6	0.5	0.6	0.6
15.0	0.8	0.8	0.8	0.8	0.8		0.9	0.9	0.9	0.9	0.6	0.6
20.0	0.8	0.8	0.8	0.8	0.8		0.9	0.9	0.9	0.9	0.9	0.6
30.0	0.8	0.8	0.8	0.8	0.9		0.9	0.9	0.9	0.9	0.9	0.9
40.0	0.8	0.8	0.8	0.8	0.9		0.9	0.9	0.9	0.9	0.9	0.9
60.0	0.9	0.8	0.8	0.8	0.9		0.9	0.9	0.9	0.9	0.9	0.9
80.0	0.9	0.8	0.8	0.8	0.9		0.9	0.9	0.8	0.9	0.9	0.9
90.0	0.8	0.8	0.8	0.8	0.9		0.9	0.9	0.9	0.9	0.9	0.9
100.0	0.8	0.9	0.8	0.8	0.9		0.9	0.9	0.9	0.9	0.9	0.9
110.0	0.9	0.9	0.8	0.8	0.9		0.9	0.9	0.9	0.9	0.9	0.9
120.0	0.9	0.9	0.8	0.8	0.9		0.9	0.9	0.9	0.9	0.9	0.9
130.0	0.9	0.9	0.9	0.8	0.9		0.9	0.9	0.9	0.9	0.9	0.9
135.0	0.7	0.9	0.8	0.8	0.9		0.9	0.9	0.8	0.7	0.7	0.8

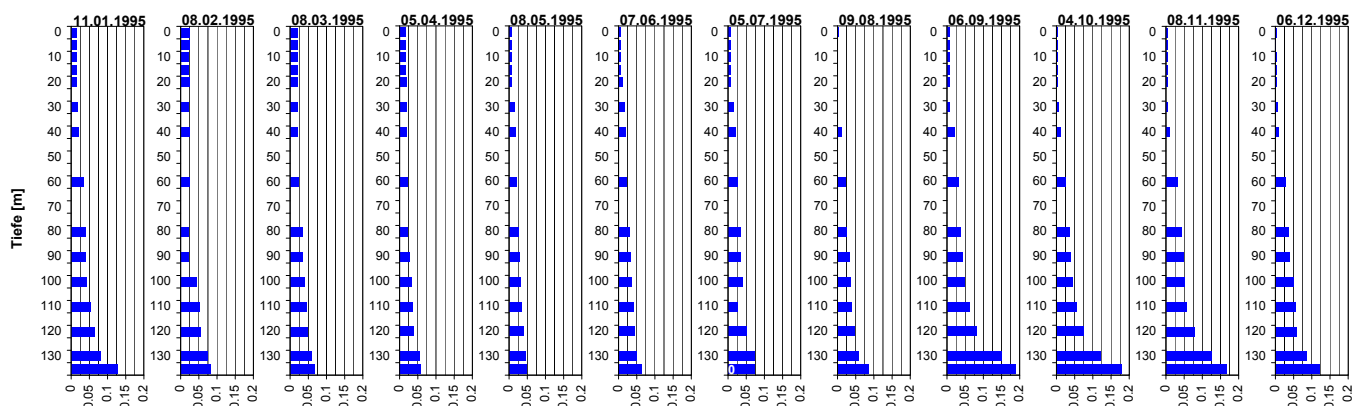
### Phosphat (PO<sub>4</sub>)



Tiefe [m]	11.01.1995 PO4-P [mg P/l]	08.02.1995 PO4-P [mg P/l]	08.03.1995 PO4-P [mg P/l]	05.04.1995 PO4-P [mg P/l]	08.05.1995 PO4-P [mg P/l]	07.06.1995 PO4-P [mg P/l]	05.07.1995 PO4-P [mg P/l]	09.08.1995 PO4-P [mg P/l]	06.09.1995 PO4-P [mg P/l]	04.10.1995 PO4-P [mg P/l]	08.11.1995 PO4-P [mg P/l]	06.12.1995 PO4-P [mg P/l]
0.0	0.012	0.021	0.021	0.015	0.005	0.004	0.002	0.002	0.003	0.005	0.001	0.003
5.0	0.012	0.018	0.018	0.014	0.003	0.003	0.001	0.000	0.001	0.003	0.001	0.001
10.0	0.012	0.018	0.018	0.013	0.004	0.003	0.001	0.000	0.001	0.003	0.001	0.003
15.0	0.012	0.018	0.017	0.015	0.004	0.003	0.001	0.000	0.001	0.003	0.001	0.002
20.0	0.013	0.019	0.018	0.017	0.004	0.004	0.001	0.000	0.001	0.003	0.001	0.002
30.0	0.013	0.019	0.018	0.017	0.012	0.014	0.011	0.000	0.002	0.006	0.001	0.006
40.0	0.018	0.019	0.019	0.015	0.017	0.015	0.012	0.010	0.014	0.007	0.007	0.006
60.0	0.032	0.021	0.021	0.020	0.015	0.018	0.019	0.019	0.025	0.013	0.027	0.027
80.0	0.039	0.017	0.030	0.019	0.022	0.027	0.026	0.023	0.032	0.028	0.036	0.037
90.0	0.038	0.019	0.033	0.025	0.025	0.029	0.027	0.025	0.035	0.033	0.042	0.039
100.0	0.041	0.039	0.038	0.029	0.029	0.026	0.031	0.025	0.041	0.036	0.046	0.048
110.0	0.053	0.046	0.044	0.034	0.034	0.036	0.016	0.029	0.051	0.046	0.057	0.057
120.0	0.062	0.049	0.045	0.038	0.039	0.037	0.045	0.041	0.071	0.063	0.073	0.057
130.0	0.079	0.067	0.056	0.052	0.040	0.043	0.066	0.050	0.125	0.105	0.116	0.086
135.0	0.119	0.072	0.058	0.053	0.042	0.052	0.066	0.071	0.145	0.136	0.155	0.122

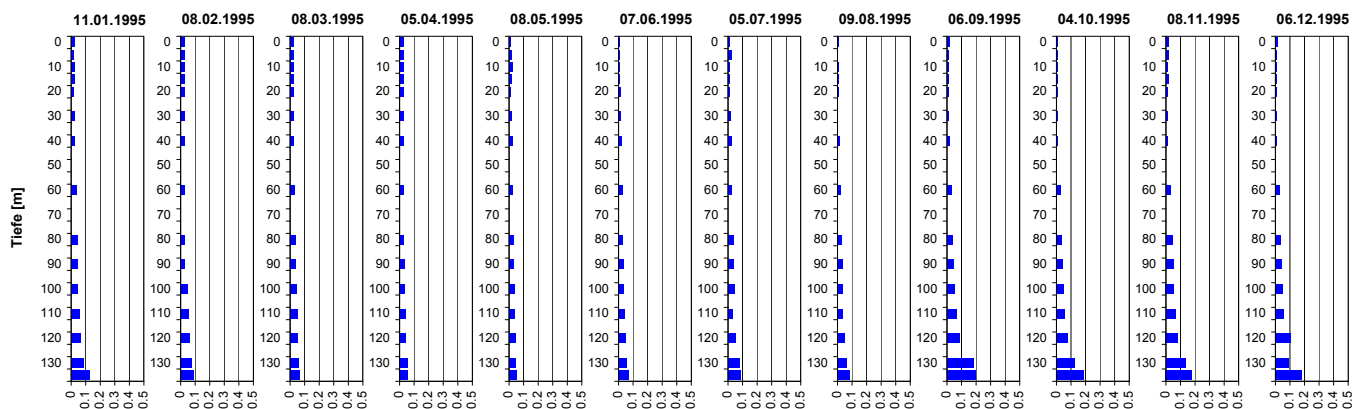
## Tiefenprofile Zürichsee 1995

### Gelöster Phosphor ( $P_{gel}$ )



Tiefe [m]	11.01.1995 P-gel [mg P/l]	08.02.1995 P-gel [mg P/l]	08.03.1995 P-gel [mg P/l]	05.04.1995 P-gel [mg P/l]	08.05.1995 P-gel [mg P/l]	07.06.1995 P-gel [mg P/l]	05.07.1995 P-gel [mg P/l]	09.08.1995 P-gel [mg P/l]	06.09.1995 P-gel [mg P/l]	04.10.1995 P-gel [mg P/l]	08.11.1995 P-gel [mg P/l]	06.12.1995 P-gel [mg P/l]
0.0	0.016	0.024	0.021	0.018	0.006	0.006	0.006	0.003	0.006	0.005	0.005	0.003
5.0	0.015	0.024	0.021	0.018	0.006	0.005	0.006	0.000	0.007	0.003	0.004	0.002
10.0	0.015	0.023	0.021	0.017	0.006	0.005	0.006	0.000	0.006	0.003	0.005	0.003
15.0	0.015	0.023	0.021	0.017	0.006	0.006	0.006	0.000	0.006	0.003	0.004	0.003
20.0	0.015	0.024	0.020	0.019	0.006	0.011	0.006	0.000	0.006	0.003	0.005	0.003
30.0	0.017	0.023	0.020	0.019	0.015	0.016	0.015	0.002	0.007	0.007	0.005	0.006
40.0	0.020	0.024	0.020	0.020	0.019	0.020	0.020	0.013	0.020	0.011	0.010	0.009
60.0	0.034	0.026	0.024	0.022	0.021	0.023	0.025	0.022	0.031	0.027	0.031	0.029
80.0	0.041	0.022	0.034	0.023	0.025	0.031	0.034	0.027	0.038	0.037	0.043	0.036
90.0	0.041	0.023	0.033	0.028	0.030	0.034	0.034	0.042	0.042	0.040	0.047	0.039
100.0	0.043	0.044	0.039	0.033	0.032	0.037	0.039	0.038	0.048	0.046	0.051	0.051
110.0	0.054	0.053	0.046	0.036	0.035	0.042	0.026	0.039	0.063	0.056	0.057	0.057
120.0	0.064	0.055	0.047	0.040	0.041	0.046	0.052	0.048	0.080	0.076	0.078	0.059
130.0	0.082	0.074	0.059	0.055	0.044	0.049	0.074	0.058	0.149	0.121	0.124	0.087
135.0	0.127	0.084	0.066	0.058	0.047	0.064	0.073	0.085	0.188	0.179	0.165	0.123

### Gesamt-Phosphor ( $P_{tot}$ )



Tiefe [m]	11.01.1995 P-tot [mg P/l]	08.02.1995 P-tot [mg P/l]	08.03.1995 P-tot [mg P/l]	05.04.1995 P-tot [mg P/l]	08.05.1995 P-tot [mg P/l]	07.06.1995 P-tot [mg P/l]	05.07.1995 P-tot [mg P/l]	09.08.1995 P-tot [mg P/l]	06.09.1995 P-tot [mg P/l]	04.10.1995 P-tot [mg P/l]	08.11.1995 P-tot [mg P/l]	06.12.1995 P-tot [mg P/l]
0.0	0.021	0.029	0.026	0.028	0.013	0.009	0.013	0.008	0.014	0.013	0.016	0.014
5.0	0.020	0.029	0.026	0.028	0.020	0.009	0.022	0.005	0.012	0.012	0.014	0.011
10.0	0.023	0.028	0.025	0.028	0.023	0.012	0.013	0.013	0.013	0.012	0.013	0.012
15.0	0.021	0.028	0.026	0.026	0.014	0.010	0.011	0.007	0.009	0.010	0.014	0.012
20.0	0.020	0.028	0.026	0.028	0.011	0.014	0.009	0.006	0.007	0.007	0.010	0.012
30.0	0.021	0.029	0.026	0.028	0.020	0.019	0.019	0.002	0.009	0.009	0.009	0.009
40.0	0.023	0.029	0.026	0.026	0.023	0.022	0.024	0.015	0.020	0.012	0.013	0.009
60.0	0.035	0.031	0.028	0.028	0.024	0.027	0.026	0.023	0.031	0.029	0.033	0.029
80.0	0.041	0.028	0.036	0.029	0.033	0.033	0.036	0.030	0.040	0.040	0.045	0.039
90.0	0.042	0.029	0.037	0.033	0.034	0.037	0.037	0.034	0.042	0.045	0.052	0.046
100.0	0.046	0.049	0.043	0.035	0.035	0.038	0.041	0.040	0.050	0.049	0.055	0.051
110.0	0.059	0.056	0.048	0.040	0.039	0.043	0.028	0.040	0.067	0.061	0.068	0.059
120.0	0.066	0.065	0.050	0.043	0.042	0.050	0.053	0.050	0.084	0.080	0.082	0.105
130.0	0.086	0.079	0.061	0.058	0.046	0.055	0.078	0.065	0.179	0.125	0.132	0.089
135.0	0.130	0.091	0.066	0.058	0.048	0.069	0.082	0.086	0.196	0.188	0.179	0.181