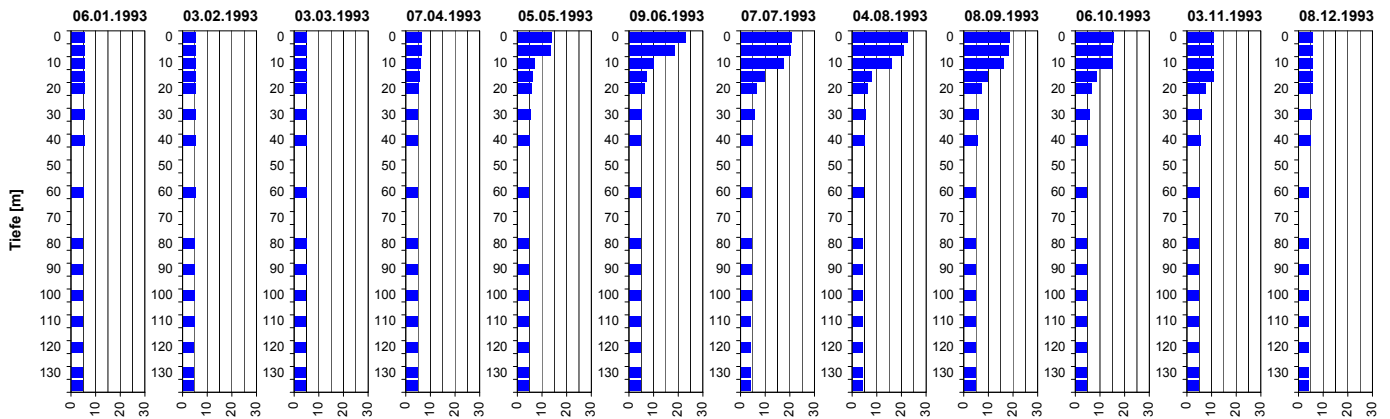
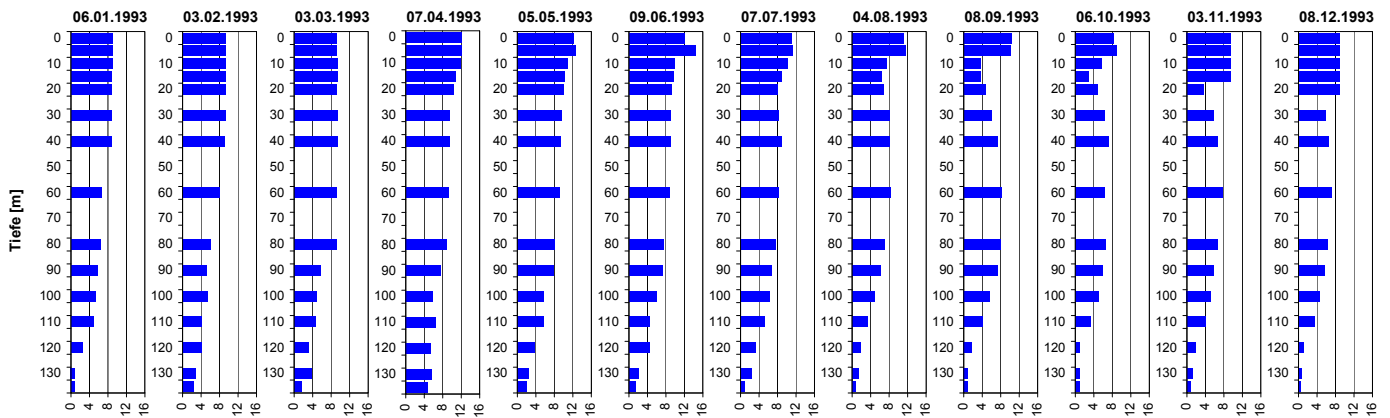


Temperatur



Tiefe [m]	06.01.1993 Temp [°C]	03.02.1993 Temp [°C]	03.03.1993 Temp [°C]	07.04.1993 Temp [°C]	05.05.1993 Temp [°C]	09.06.1993 Temp [°C]	07.07.1993 Temp [°C]	04.08.1993 Temp [°C]	08.09.1993 Temp [°C]	06.10.1993 Temp [°C]	03.11.1993 Temp [°C]	08.12.1993 Temp [°C]
0.0	5.6	5.3	4.9	6.5	13.8	22.8	20.9	22.4	18.5	15.4	10.7	5.9
5.0	5.6	5.3	4.9	6.3	13.5	18.6	20.4	21.0	18.2	15.1	10.7	5.9
10.0	5.6	5.3	4.9	6.1	7.1	10.1	17.7	15.9	16.2	15.1	10.7	5.9
15.0	5.6	5.3	4.9	5.8	6.2	7.0	10.0	7.8	9.8	8.8	10.7	5.9
20.0	5.6	5.3	4.9	5.4	5.8	6.1	6.5	6.4	7.1	6.5	7.4	5.9
30.0	5.6	5.3	4.9	4.9	5.3	5.1	5.7	5.4	6.1	5.7	6.1	5.6
40.0	5.6	5.3	4.9	4.8	4.9	4.7	5.1	4.9	5.7	5.2	5.6	5.0
60.0	5.2	5.3	4.9	4.7	4.7	4.5	4.6	4.5	4.8	4.5	4.9	4.3
80.0	4.8	4.9	4.9	4.7	4.7	4.5	4.6	4.4	4.7	4.5	4.8	4.1
90.0	4.8	4.8	4.9	4.7	4.7	4.5	4.6	4.4	4.7	4.5	4.7	4.1
100.0	4.7	4.8	4.8	4.7	4.7	4.5	4.5	4.4	4.7	4.5	4.7	4.1
110.0	4.7	4.8	4.7	4.7	4.7	4.5	4.4	4.4	4.7	4.5	4.7	4.1
120.0	4.7	4.7	4.7	4.7	4.7	4.5	4.4	4.4	4.7	4.5	4.7	4.1
130.0	4.6	4.7	4.7	4.7	4.7	4.5	4.4	4.4	4.7	4.5	4.7	4.1
135.0	4.6	4.7	4.7	4.7	4.7	4.5	4.4	4.4	4.7	4.5	4.7	4.1

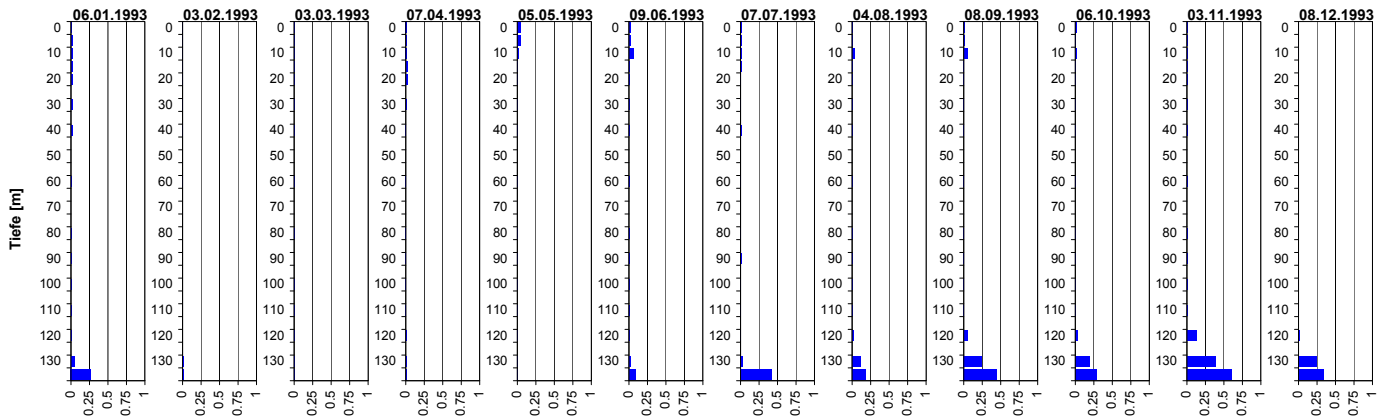
Sauerstoff (O₂)



Tiefe [m]	06.01.1993 O ₂ [mg O ₂ /l]	03.02.1993 O ₂ [mg O ₂ /l]	03.03.1993 O ₂ [mg O ₂ /l]	07.04.1993 O ₂ [mg O ₂ /l]	05.05.1993 O ₂ [mg O ₂ /l]	09.06.1993 O ₂ [mg O ₂ /l]	07.07.1993 O ₂ [mg O ₂ /l]	04.08.1993 O ₂ [mg O ₂ /l]	08.09.1993 O ₂ [mg O ₂ /l]	06.10.1993 O ₂ [mg O ₂ /l]	03.11.1993 O ₂ [mg O ₂ /l]	08.12.1993 O ₂ [mg O ₂ /l]
0.0	8.9	9.4	9.3	12.2	12.2	12.0	11.2	11.2	10.5	8.3	9.5	9.0
5.0	8.9	9.4	9.3	12.0	12.8	14.3	11.4	11.7	10.2	9.0	9.4	9.0
10.0	8.9	9.3	9.3	11.8	10.9	9.9	10.3	7.4	3.7	5.7	9.4	8.9
15.0	8.8	9.3	9.3	10.7	10.3	9.6	9.1	6.4	3.8	2.9	9.4	8.9
20.0	8.9	9.3	9.3	10.4	10.1	9.2	8.0	6.9	4.9	5.0	3.5	9.0
30.0	8.9	9.3	9.3	9.4	9.6	9.1	8.4	8.1	6.0	6.4	5.7	5.9
40.0	8.9	9.3	9.3	9.4	9.4	9.1	8.9	8.1	7.4	7.2	6.7	6.6
60.0	6.7	8.2	9.3	9.2	9.3	8.8	8.4	8.4	8.3	6.3	7.6	7.3
80.0	6.4	6.1	9.1	9.0	8.2	7.6	7.6	7.1	8.0	6.5	6.6	6.4
90.0	5.8	5.4	5.7	7.7	7.9	7.2	6.9	6.3	7.4	6.0	5.9	5.8
100.0	5.2	5.5	4.8	5.9	5.8	5.9	6.3	5.0	5.7	5.1	5.2	4.7
110.0	4.9	4.2	4.6	6.6	5.8	4.5	5.3	3.3	4.1	3.4	4.0	3.5
120.0	2.5	4.2	3.2	5.4	3.8	4.5	3.4	1.8	1.8	0.9	1.8	1.3
130.0	0.9	3.0	3.8	5.6	2.5	2.2	2.5	1.4	0.9	1.1	1.2	0.7
135.0	0.8	2.4	1.6	4.7	2.1	1.4	0.9	0.8	0.9	1.1	0.7	0.6

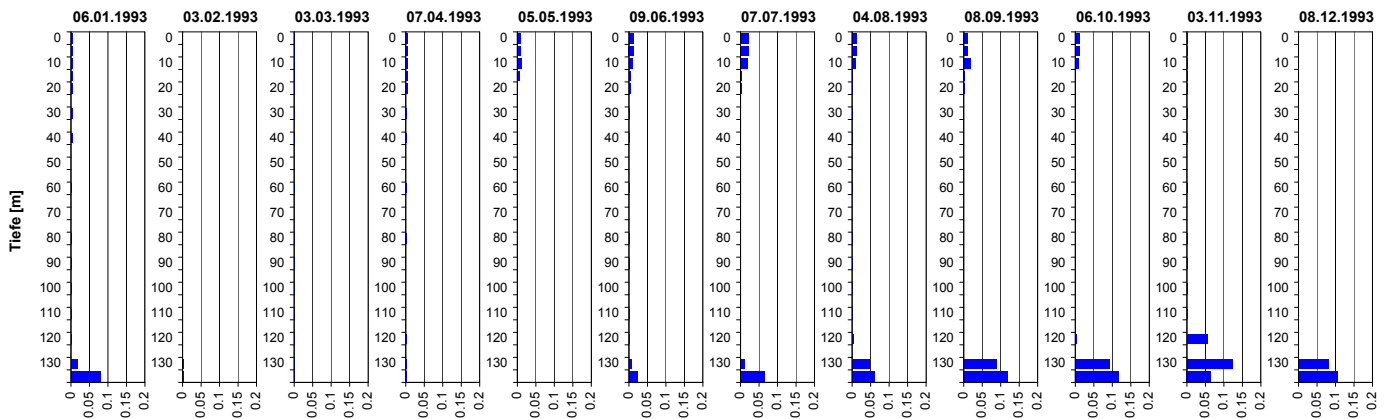
Ammonium (NH₄)

Tiefenprofile Zürichsee 1993



Tiefe [m]	06.01.1993 NH4-N [mg N/l]	03.02.1993 NH4-N [mg N/l]	03.03.1993 NH4-N [mg N/l]	07.04.1993 NH4-N [mg N/l]	05.05.1993 NH4-N [mg N/l]	09.06.1993 NH4-N [mg N/l]	07.07.1993 NH4-N [mg N/l]	04.08.1993 NH4-N [mg N/l]	08.09.1993 NH4-N [mg N/l]	06.10.1993 NH4-N [mg N/l]	03.11.1993 NH4-N [mg N/l]	08.12.1993 NH4-N [mg N/l]
0.0	0.01	0.01	0.01	0.02	0.05	0.02	0.02	0.01	0.01	0.02	0.01	0.01
5.0	0.02	0.01	0.01	0.01	0.05	0.02	0.02	0.01	0.01	0.01	0.01	0.01
10.0	0.02	0.01	0.01	0.02	0.02	0.06	0.03	0.03	0.05	0.02	0.01	0.01
15.0	0.02	0.01	0.01	0.02	0.01	0.01	0.02	0.01	0.01	0.01	0.01	0.01
20.0	0.02	0.01	0.01	0.02	0.01	0.01	0.01	0.01	0.01	0.01	0.01	0.01
30.0	0.02	0.01	0.01	0.01	0.01	0.01	0.01	0.01	0.01	0.01	0.01	0.01
40.0	0.03	0.01	0.01	0.01	0.01	0.01	0.02	0.01	0.01	0.01	0.01	0.01
60.0	0.01	0.01	0.01	0.01	0.01	0.01	0.01	0.01	0.01	0.01	0.01	0.01
80.0	0.01	0.00	0.01	0.01	0.01	0.01	0.01	0.01	0.01	0.01	0.01	0.01
90.0	0.01	0.00	0.00	0.01	0.01	0.01	0.02	0.01	0.01	0.01	0.01	0.01
100.0	0.01	0.00	0.01	0.01	0.01	0.01	0.01	0.01	0.01	0.01	0.01	0.01
110.0	0.01	0.00	0.01	0.01	0.01	0.01	0.01	0.01	0.01	0.01	0.01	0.01
120.0	0.01	0.00	0.01	0.01	0.01	0.01	0.01	0.02	0.05	0.04	0.13	0.02
130.0	0.05	0.02	0.01	0.01	0.01	0.02	0.03	0.12	0.25	0.19	0.39	0.25
135.0	0.27	0.02	0.01	0.01	0.01	0.09	0.42	0.19	0.45	0.29	0.61	0.35

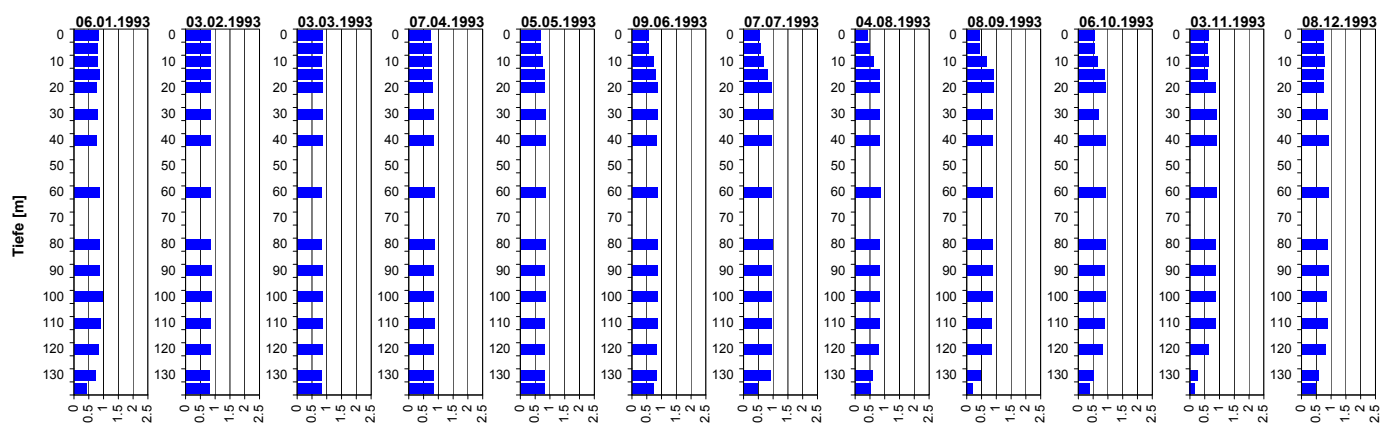
Nitrit (NO₂)



Tiefe [m]	06.01.1993 NO2-N [mg N/l]	03.02.1993 NO2-N [mg N/l]	03.03.1993 NO2-N [mg N/l]	07.04.1993 NO2-N [mg N/l]	05.05.1993 NO2-N [mg N/l]	09.06.1993 NO2-N [mg N/l]	07.07.1993 NO2-N [mg N/l]	04.08.1993 NO2-N [mg N/l]	08.09.1993 NO2-N [mg N/l]	06.10.1993 NO2-N [mg N/l]	03.11.1993 NO2-N [mg N/l]	08.12.1993 NO2-N [mg N/l]
0.0	0.005	0.001	0.002	0.004	0.009	0.013	0.024	0.012	0.010	0.012	0.002	0.002
5.0	0.005	0.001	0.002	0.005	0.009	0.014	0.024	0.013	0.010	0.013	0.002	0.002
10.0	0.005	0.001	0.002	0.005	0.011	0.009	0.021	0.010	0.018	0.010	0.002	0.002
15.0	0.005	0.001	0.002	0.004	0.006	0.004	0.004	0.002	0.003	0.002	0.002	0.002
20.0	0.005	0.001	0.002	0.004	0.002	0.003	0.003	0.002	0.003	0.001	0.001	0.002
30.0	0.005	0.001	0.002	0.003	0.002	0.001	0.002	0.001	0.001	0.001	0.001	0.001
40.0	0.005	0.001	0.002	0.002	0.001	0.001	0.002	0.001	0.001	0.001	0.001	0.001
60.0	0.001	0.002	0.002	0.002	0.001	0.001	0.002	0.001	0.001	0.001	0.001	0.001
80.0	0.001	0.000	0.002	0.004	0.001	0.001	0.001	0.001	0.001	0.001	0.001	0.001
90.0	0.001	0.000	0.001	0.001	0.002	0.001	0.001	0.001	0.001	0.001	0.001	0.001
100.0	0.001	0.000	0.001	0.001	0.001	0.000	0.001	0.001	0.001	0.001	0.001	0.000
110.0	0.001	0.001	0.001	0.001	0.001	0.001	0.001	0.001	0.001	0.001	0.001	0.000
120.0	0.001	0.001	0.001	0.002	0.001	0.001	0.002	0.004	0.001	0.005	0.056	0.002
130.0	0.019	0.003	0.001	0.002	0.001	0.006	0.011	0.047	0.089	0.093	0.122	0.081
135.0	0.079	0.003	0.001	0.002	0.002	0.023	0.067	0.060	0.120	0.118	0.065	0.107

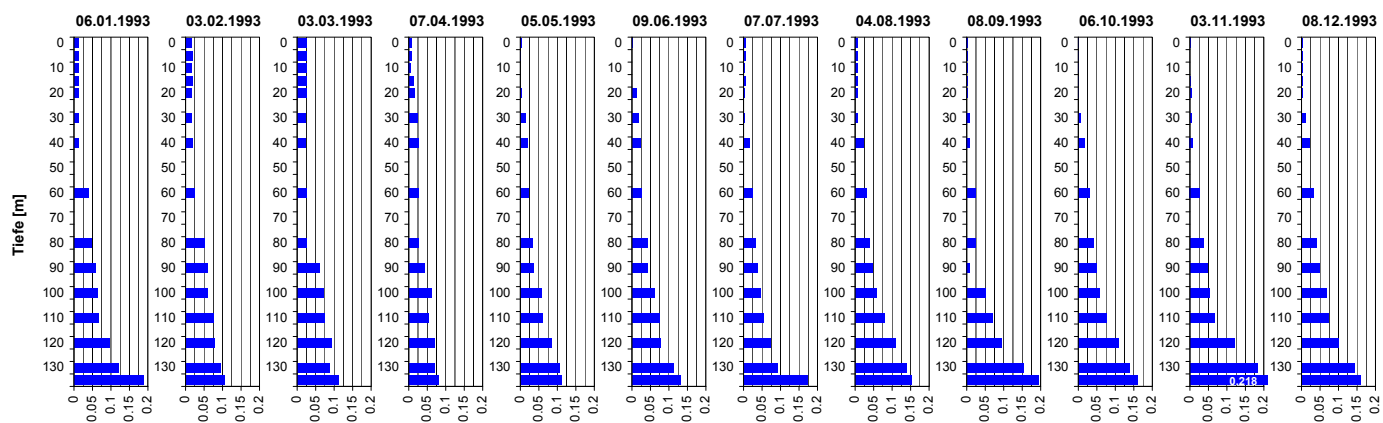
Tiefenprofile Zürichsee 1993

Nitrat (NO₃)



Tiefe [m]	06.01.1993 NO ₃ -N [mg N/l]	03.02.1993 NO ₃ -N [mg N/l]	03.03.1993 NO ₃ -N [mg N/l]	07.04.1993 NO ₃ -N [mg N/l]	05.05.1993 NO ₃ -N [mg N/l]	09.06.1993 NO ₃ -N [mg N/l]	07.07.1993 NO ₃ -N [mg N/l]	04.08.1993 NO ₃ -N [mg N/l]	08.09.1993 NO ₃ -N [mg N/l]	06.10.1993 NO ₃ -N [mg N/l]	03.11.1993 NO ₃ -N [mg N/l]	08.12.1993 NO ₃ -N [mg N/l]
0.0	0.8	0.9	0.9	0.7	0.7	0.6	0.6	0.4	0.5	0.6	0.6	0.8
5.0	0.8	0.9	0.9	0.8	0.7	0.6	0.6	0.5	0.4	0.6	0.6	0.8
10.0	0.8	0.9	0.8	0.8	0.8	0.7	0.7	0.6	0.7	0.7	0.6	0.8
15.0	0.9	0.9	0.9	0.8	0.8	0.8	0.8	0.8	0.9	0.9	0.6	0.8
20.0	0.8	0.9	0.9	0.8	0.8	0.9	0.9	0.8	0.9	0.9	0.9	0.8
30.0	0.8	0.9	0.9	0.9	0.9	0.9	1.0	0.8	0.9	0.7	0.9	0.9
40.0	0.8	0.9	0.8	0.8	0.9	0.8	1.0	0.8	0.9	0.9	0.9	0.9
60.0	0.9	0.9	0.8	0.9	0.8	0.9	1.0	0.8	0.9	0.9	0.9	0.9
80.0	0.9	0.9	0.8	0.9	0.8	0.9	1.0	0.8	0.9	0.9	0.9	0.9
90.0	0.9	0.9	0.9	0.9	0.8	0.9	1.0	0.8	0.9	0.9	0.9	0.9
100.0	0.9	0.9	0.9	0.9	0.8	0.9	1.0	0.8	0.9	0.9	0.9	0.9
110.0	0.9	0.9	0.9	0.9	0.8	0.8	1.0	0.8	0.8	0.9	0.9	0.9
120.0	0.8	0.9	0.8	0.8	0.8	0.8	1.0	0.8	0.8	0.8	0.6	0.8
130.0	0.7	0.8	0.8	0.9	0.8	0.8	0.9	0.6	0.5	0.5	0.2	0.6
135.0	0.4	0.8	0.8	0.8	0.8	0.7	0.5	0.5	0.2	0.4	0.2	0.5

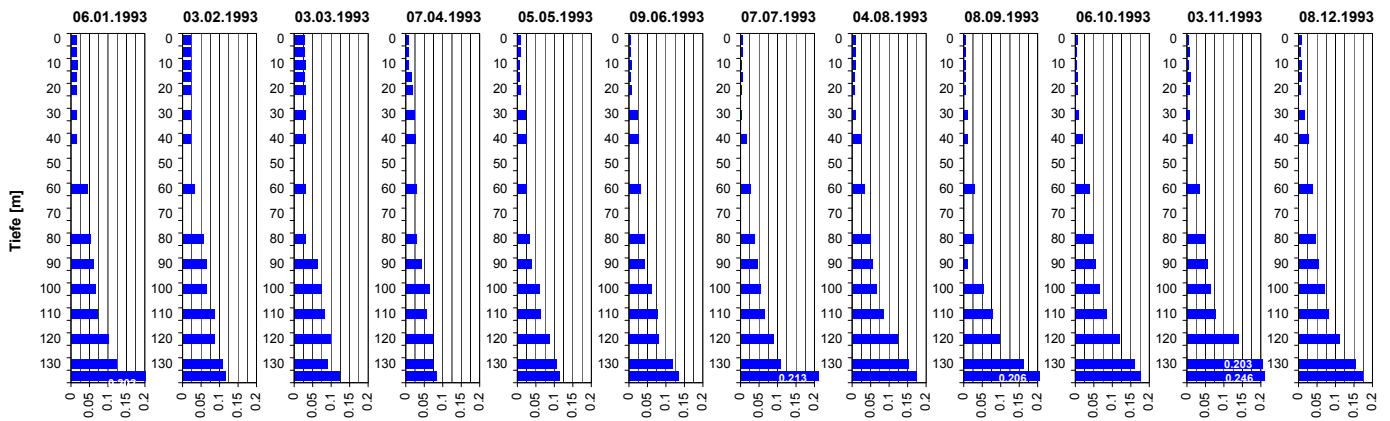
Phosphat (PO₄)



Tiefe [m]	06.01.1993 PO ₄ -P [mg P/l]	03.02.1993 PO ₄ -P [mg P/l]	03.03.1993 PO ₄ -P [mg P/l]	07.04.1993 PO ₄ -P [mg P/l]	05.05.1993 PO ₄ -P [mg P/l]	09.06.1993 PO ₄ -P [mg P/l]	07.07.1993 PO ₄ -P [mg P/l]	04.08.1993 PO ₄ -P [mg P/l]	08.09.1993 PO ₄ -P [mg P/l]	06.10.1993 PO ₄ -P [mg P/l]	03.11.1993 PO ₄ -P [mg P/l]	08.12.1993 PO ₄ -P [mg P/l]
0.0	0.012	0.018	0.025	0.007	0.004	0.001	0.006	0.007	0.003	0.002	0.001	0.003
5.0	0.011	0.019	0.026	0.007	0.002	0.000	0.006	0.006	0.002	0.001	0.000	0.004
10.0	0.012	0.018	0.025	0.006	0.000	0.000	0.005	0.007	0.002	0.002	0.000	0.004
15.0	0.012	0.019	0.025	0.013	0.000	0.000	0.006	0.006	0.002	0.002	0.001	0.004
20.0	0.012	0.018	0.025	0.017	0.004	0.011	0.005	0.006	0.002	0.002	0.003	0.004
30.0	0.012	0.018	0.024	0.024	0.015	0.017	0.005	0.006	0.009	0.006	0.003	0.013
40.0	0.012	0.019	0.024	0.027	0.021	0.022	0.016	0.022	0.009	0.017	0.008	0.023
60.0	0.039	0.026	0.025	0.028	0.022	0.027	0.025	0.031	0.024	0.032	0.027	0.034
80.0	0.048	0.051	0.025	0.028	0.033	0.043	0.034	0.040	0.025	0.042	0.037	0.043
90.0	0.057	0.060	0.060	0.044	0.036	0.042	0.039	0.048	0.009	0.049	0.047	0.050
100.0	0.064	0.060	0.072	0.061	0.059	0.062	0.047	0.059	0.051	0.057	0.052	0.068
110.0	0.066	0.077	0.074	0.055	0.060	0.075	0.055	0.080	0.069	0.077	0.066	0.074
120.0	0.095	0.078	0.094	0.070	0.084	0.076	0.075	0.110	0.094	0.109	0.120	0.101
130.0	0.119	0.095	0.088	0.070	0.106	0.111	0.093	0.139	0.155	0.140	0.183	0.144
135.0	0.189	0.105	0.111	0.081	0.113	0.130	0.174	0.153	0.194	0.161	0.218	0.160

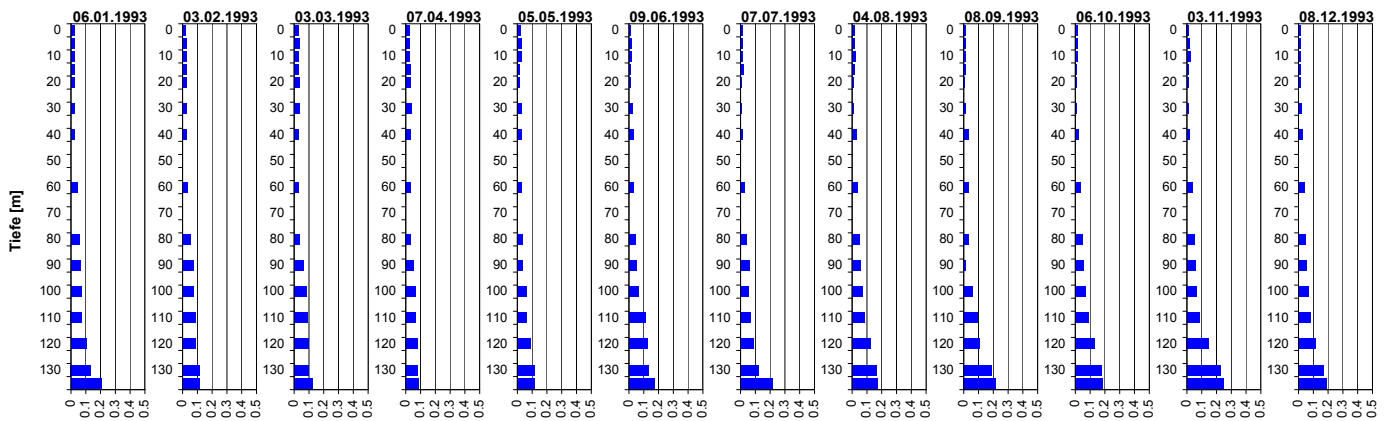
Gelöster Phosphor (P_{gel})

Tiefenprofile Zürichsee 1993



Tiefe [m]	06.01.1993 P-gel [mg P/l]	03.02.1993 P-gel [mg P/l]	03.03.1993 P-gel [mg P/l]	07.04.1993 P-gel [mg P/l]	05.05.1993 P-gel [mg P/l]	09.06.1993 P-gel [mg P/l]	07.07.1993 P-gel [mg P/l]	04.08.1993 P-gel [mg P/l]	08.09.1993 P-gel [mg P/l]	06.10.1993 P-gel [mg P/l]	03.11.1993 P-gel [mg P/l]	08.12.1993 P-gel [mg P/l]
0.0	0.015	0.022	0.029	0.008	0.009	0.004	0.006	0.009	0.004	0.006	0.005	0.008
5.0	0.015	0.022	0.029	0.007	0.009	0.004	0.006	0.008	0.004	0.005	0.007	0.007
10.0	0.017	0.023	0.030	0.009	0.006	0.006	0.005	0.008	0.005	0.004	0.004	0.008
15.0	0.016	0.021	0.029	0.015	0.007	0.005	0.006	0.007	0.005	0.006	0.010	0.008
20.0	0.015	0.021	0.030	0.019	0.009	0.007	0.005	0.007	0.005	0.006	0.008	0.007
30.0	0.016	0.021	0.030	0.025	0.022	0.022	0.005	0.008	0.011	0.010	0.008	0.016
40.0	0.016	0.023	0.030	0.027	0.026	0.025	0.016	0.025	0.011	0.021	0.016	0.027
60.0	0.045	0.033	0.031	0.029	0.026	0.031	0.029	0.034	0.030	0.038	0.035	0.038
80.0	0.054	0.057	0.031	0.030	0.033	0.043	0.039	0.049	0.028	0.049	0.047	0.047
90.0	0.060	0.066	0.063	0.044	0.040	0.043	0.048	0.054	0.010	0.056	0.056	0.056
100.0	0.065	0.066	0.074	0.065	0.061	0.062	0.054	0.066	0.054	0.065	0.063	0.072
110.0	0.072	0.087	0.082	0.056	0.063	0.078	0.065	0.084	0.077	0.086	0.077	0.081
120.0	0.100	0.087	0.098	0.072	0.088	0.081	0.090	0.123	0.097	0.121	0.140	0.111
130.0	0.124	0.108	0.091	0.072	0.108	0.117	0.108	0.153	0.163	0.160	0.203	0.155
135.0	0.202	0.118	0.122	0.083	0.114	0.135	0.213	0.175	0.206	0.176	0.246	0.173

Gesamt-Phosphor (P_{tot})



Tiefe [m]	06.01.1993 P-tot [mg P/l]	03.02.1993 P-tot [mg P/l]	03.03.1993 P-tot [mg P/l]	07.04.1993 P-tot [mg P/l]	05.05.1993 P-tot [mg P/l]	09.06.1993 P-tot [mg P/l]	07.07.1993 P-tot [mg P/l]	04.08.1993 P-tot [mg P/l]	08.09.1993 P-tot [mg P/l]	06.10.1993 P-tot [mg P/l]	03.11.1993 P-tot [mg P/l]	08.12.1993 P-tot [mg P/l]
0.0	0.024	0.025	0.032	0.027	0.025	0.012	0.019	0.014	0.014	0.014	0.014	0.016
5.0	0.022	0.027	0.034	0.029	0.031	0.014	0.017	0.014	0.014	0.015	0.015	0.015
10.0	0.023	0.028	0.033	0.028	0.027	0.015	0.015	0.021	0.015	0.015	0.021	0.016
15.0	0.023	0.028	0.033	0.030	0.014	0.013	0.021	0.015	0.015	0.010	0.013	0.017
20.0	0.024	0.027	0.035	0.032	0.016	0.010	0.011	0.012	0.009	0.009	0.010	0.016
30.0	0.024	0.028	0.034	0.032	0.028	0.026	0.009	0.011	0.015	0.012	0.010	0.021
40.0	0.024	0.029	0.032	0.035	0.030	0.029	0.019	0.028	0.034	0.023	0.018	0.028
60.0	0.045	0.034	0.033	0.035	0.030	0.032	0.029	0.036	0.033	0.039	0.036	0.040
80.0	0.054	0.058	0.035	0.035	0.038	0.045	0.041	0.049	0.030	0.052	0.050	0.051
90.0	0.063	0.073	0.064	0.051	0.040	0.048	0.065	0.059	0.013	0.059	0.060	0.057
100.0	0.071	0.075	0.081	0.068	0.062	0.063	0.058	0.071	0.058	0.068	0.068	0.072
110.0	0.074	0.092	0.088	0.064	0.064	0.113	0.071	0.085	0.095	0.089	0.083	0.085
120.0	0.102	0.092	0.099	0.079	0.088	0.128	0.092	0.125	0.107	0.129	0.149	0.120
130.0	0.135	0.114	0.098	0.081	0.117	0.129	0.121	0.166	0.186	0.179	0.229	0.171
135.0	0.204	0.119	0.122	0.089	0.119	0.170	0.222	0.175	0.217	0.185	0.248	0.190