

# Niederschlag

# Regenmesser Beicher, Fischenthal

ZH 513

Daten unvollständig { ... }

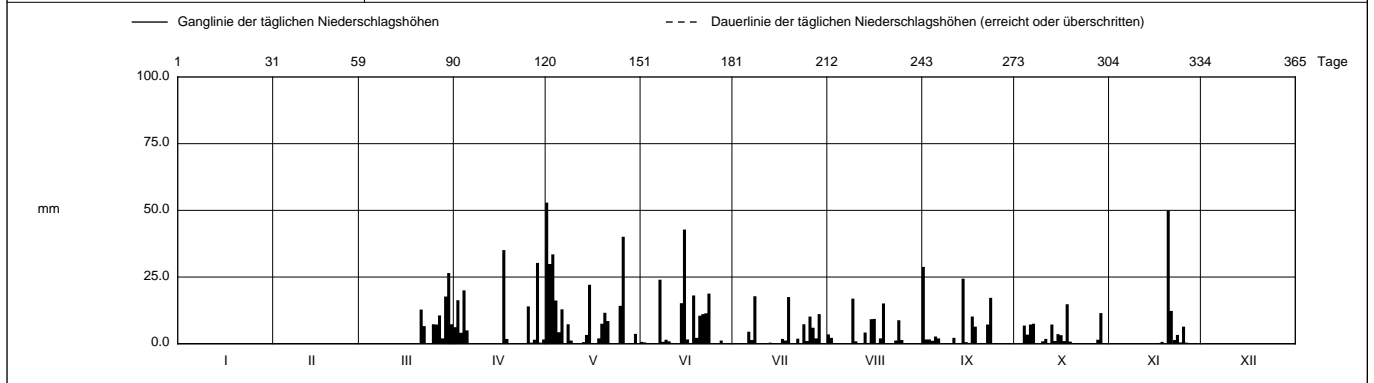
Koordinaten 714 190 / 242 360

Stations Höhe 770.0 müM

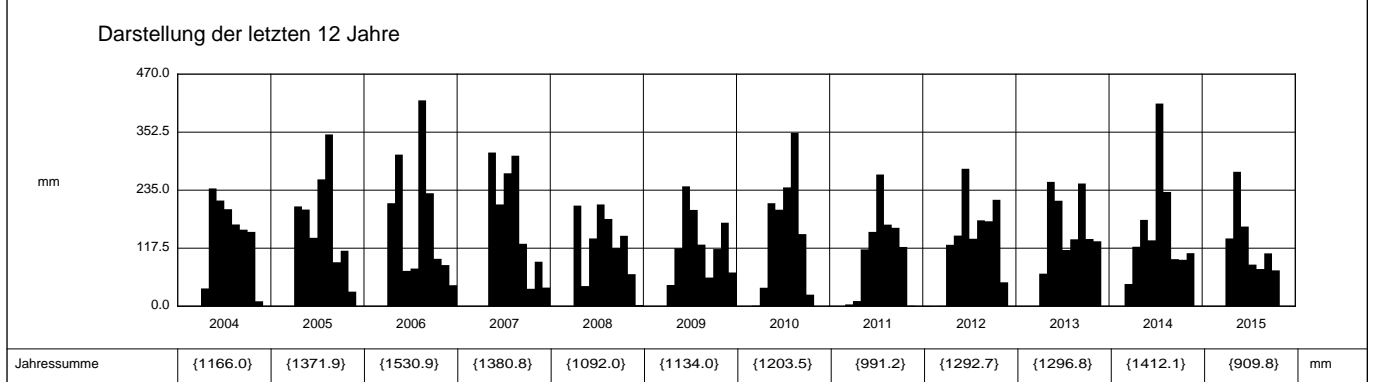
Fläche - km2

2015	Jan	Feb	März	April	Mai	Juni	Juli	Aug	Sept	Okt	Nov	Dez	
1	{ }	{ }	{ }	6.2	52.9 +	0.7	0	3.5	28.8 +	0	0	{ }	1
2	{ }	{ }	{ }	16.3	29.9	0.5	0	2.2	1.6	0	0.2	{ }	2
3	{ }	{ }	{ }	4.1	33.5	0	0	0	1.6	0	0	{ }	3
4	{ }	{ }	{ }	20.0	16.2	0	0	0	1.1	6.8	0	{ }	4
5	{ }	{ }	{ }	5.0	4.3	0	0	0	2.7	3.4	0	{ }	5
<b>Tägliche Niederschlags-höhen</b>													
6	{ }	{ }	{ }	0.1	12.9	0	4.5	0	2.0	7.2	0	{ }	6
7	{ }	{ }	{ }	0.2	0.1	24.0	1.4	0	0	7.5	0	{ }	7
8	{ }	{ }	{ }	0	7.3	0.7	17.8 +	0	0	0.1	0	{ }	8
9	{ }	{ }	{ }	0	1.2	1.5	0	16.9 +	0	0	0.1	{ }	9
10	{ }	{ }	{ }	0	0	0.9	0	0.9	0	0.9	0	{ }	10
11	{ }	{ }	{ }	0.1	0	0	0	0.1	2.2	1.8	0	{ }	11
12	{ }	{ }	{ }	0	0	0	0	0	0	0	0	{ }	12
13	{ }	{ }	{ }	0	0.6	0.1	0.4	4.2	0.2	7.2	0.1	{ }	13
14	{ }	{ }	{ }	0	3.3	15.2	0	0.3	24.4	1.0	0.2	{ }	14
15	{ }	{ }	{ }	0	22.1	42.8 +	0	9.2	0.6	3.6	0	{ }	15
<b>mm</b>													
16	{ }	{ }	{0 }	0.1	0.1	1.6	0	9.3	0.3	3.2	0.1	{ }	16
17	{ }	{ }	0	35.1 +	0	0	1.8	0.1	10.2	1.0	0.3	{ }	17
18	{ }	{ }	0	1.8	2.0	18.1	1.2	2.0	6.4	14.8 +	0.7	{ }	18
19	{ }	{ }	0	0	7.5	2.2	17.5	15.1	0.2	0.8	0.1	{ }	19
20	{ }	{ }	0	0	11.6	10.5	0	0.1	0	0	49.9 +	{ }	20
21	{ }	{ }	12.8	0	8.5	11.1	0	0	0	0.1	12.3	{ }	21
22	{ }	{ }	6.6	0	0	11.4	1.9	0	7.2	0	1.4	{ }	22
23	{ }	{ }	0	0	0	18.8	0	1.2	17.2	0.1	3.3	{ }	23
<b>+ Maximum</b>													
24	{ }	{ }	0	0	0	0	7.3	8.8	0.1	0	0.5	{ }	24
25	{ }	{ }	7.3	14.0	14.2	0	1.0	1.4	0.1	0	6.4	{ }	25
26	{ }	{ }	7.2	0.4	40.1	0	10.2	0	0	0	{0.4}	{ }	26
27	{ }	{ }	10.6	1.5	0.1	1.2	6.0	0	0.1	0.1	{ }	{ }	27
28	{ }	{ }	2.0	30.3	0	0	2.0	0	0	1.5	{ }	{ }	28
29	{ }	{ }	17.7	0.4	0.1	0	11.1	0	0	11.5	{ }	{ }	29
30	{ }	{ }	26.5 +	1.6	3.7	0	0.1	0	0	0	{ }	{ }	30
31	{ }	{ }	7.3	0	0	0	0	0	0	0	{ }	{ }	31

Monatssumme			{98.0}	137.2	272.2 +	161.3	84.2	75.3	107.0	72.6 -	{76.0}		mm
Niederschlagstage			{9}	11	17 +	12	13	11	12	13	{5} -		Tage
Niederschlagstage grösser oder gleich als [mm]			{149} >= 0.1	{61} >= 5	{40} >= 10	{14} >= 20	{1} >= 50				>= 100		Tage
Jahreswerte			Gesamtniederschlag {1083.8} mm				Niederschlagstage {103} Tage						



Periode	1975 - 2015										(41 Jahre)	
Mit Monatssumme				{135.4}	{179.2}	{198.8}+	{193.7}	{186.3}	{160.7}	{131.1}	{112.7} -	mm
Max Tagessumme Jahr				{59.0} - 1977	{135.0}+ 1999	{72.0} 1987	{88.0} 1977	{87.0} 1978	{95.0} 2006	{89.0} 1997	{63.0} 2002	mm
Periode	Max Gesamtniederschlag {1847.0} (2002)					Min Gesamtniederschlag {240.5} (1992)						mm



Jahressumme	{1166.0}	{1371.9}	{1530.9}	{1380.8}	{1092.0}	{1134.0}	{1203.5}	{991.2}	{1292.7}	{1296.8}	{1412.1}	{909.8}	mm
-------------	----------	----------	----------	----------	----------	----------	----------	---------	----------	----------	----------	---------	----

Darstellung nach LHG Standard

Ab 1. Mai 2007 Logger-Aufzeichnung mit Kippwaage (erhöhte Messgenauigkeit)  
 Regenmesser im Winter nicht in Betrieb (keine Heizung):  
 Einsatz vom 17. April - 13. Nov. 2013