

Niederschlag

Regenmesser Beicher, Fischenthal

ZH 513

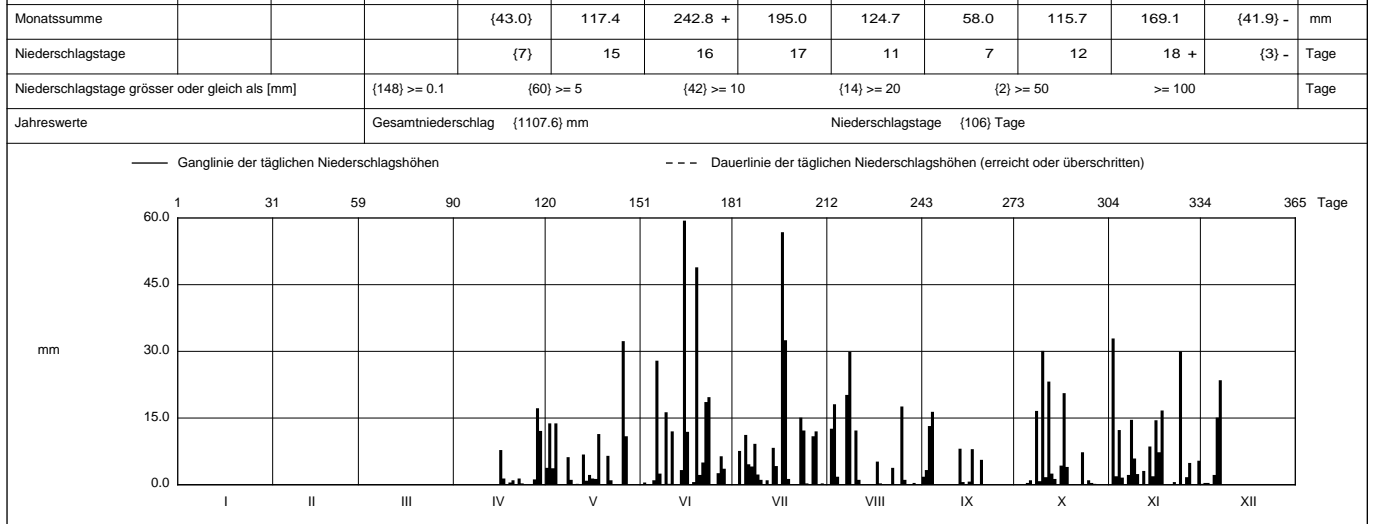
Daten vorhanden bis: 07.12.2009

Koordinaten 714 190 / 242 360

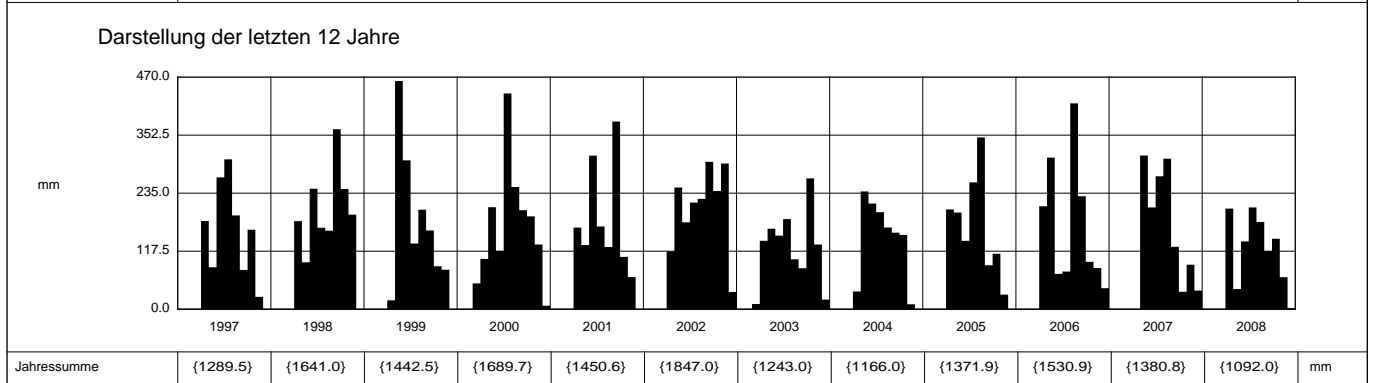
Stations Höhe 770.0 müM

Fläche - km2

2009		Jan	Feb	März	April	Mai	Juni	Juli	Aug	Sept	Okt	Nov	Dez	
Tägliche Niederschlags-höhen	1	{ }	{ }	{ }	{ }	3.8	0	0	0	1.8	0	0	0.2	1
	2	{ }	{ }	{ }	{ }	13.8	0.5	0	12.6	3.3	0	32.9 +	0.4	2
	3	{ }	{ }	{ }	{ }	3.7	0.1	7.6	18.1	13.2	0	1.9	0.4	3
	4	{ }	{ }	{ }	{ }	13.8	0	0	1.8	16.4 +	0	12.3	0.1	4
	5	{ }	{ }	{ }	{ }	0	1.0	11.2	0	0	0.4	1.6	2.2	5
mm	6	{ }	{ }	{ }	{ }	0	27.9	4.6	0	0	1.0	0	15.1 +	6
	7	{ }	{ }	{ }	{ }	0	2.5	4.1	20.2	0	0.1	2.2	23.5 +	7
	8	{ }	{ }	{ }	{ }	6.2	0	9.2	29.9 +	0	16.6	14.6	0	8
	9	{ }	{ }	{ }	{ }	1.1	16.3	2.3	0.1	0	0.8	5.9	0	9
	10	{ }	{ }	{ }	{ }	0	0.2	1.1	12.2	0	30.1 +	2.4	0	10
+ Maximum	11	{ }	{ }	{ }	{ }	0.2	12.0	0	1.1	0	1.7	0.1	0	11
	12	{ }	{ }	{ }	{ }	0	0	1.0	0	0	23.2	3.1	0	12
	13	{ }	{ }	{ }	{ }	6.8	0	0	0	8.1	2.5	0.1	0	13
	14	{ }	{ }	{ }	{ }	0.9	3.3	8.3	0.1	0.6	1.3	8.6	0	14
	15	{ }	{ }	{ }	{ }	0	2.2	59.4 +	4.2	0	0	1.9	0	15
mm	16	{ }	{ }	{ }	7.8	1.4	11.9	0	0	0.7	4.3	14.5	0	16
	17	{ }	{ }	{ }	1.4	1.3	0	56.8 +	5.2	8.0	20.6	7.3	0	17
	18	{ }	{ }	{ }	0	11.4	0.6	32.5	0.3	0.1	4.0	16.7	0	18
	19	{ }	{ }	{ }	0.5	0	48.9	1.3	0	0	0	0	0	19
	20	{ }	{ }	{ }	1.0	0	2.2	0	0	5.6	0.1	0.1	0	20
+ Maximum	21	{ }	{ }	{ }	0.1	6.5	5.0	0	0	0.1	0	0.1	0	21
	22	{ }	{ }	{ }	1.4	1.0	18.6	0	3.8	0.1	0	0.6	0	22
	23	{ }	{ }	{ }	0.3	0	19.7	0	0	0	7.3	0	0	23
	24	{ }	{ }	{ }	0	0	0.1	12.2	0	0	0.1	30.0	0	24
	25	{ }	{ }	{ }	0	0	0	0.3	17.6	0	1.0	0.1	0	25
mm	26	{ }	{ }	{ }	0	32.3 +	2.6	0	1.1	0	0.4	1.7	0	26
	27	{ }	{ }	{ }	1.2	10.9	6.4	10.9	0.1	0	0.2	4.9	0	27
	28	{ }	{ }	{ }	17.2 +	0	3.6	12.0	0.1	0	0	0.1	0	28
	29	{ }	{ }	{ }	12.1	0.1	0	0	0.4	0	0	0	0	29
	30	{ }	{ }	{ }	0	0	0	0.3	0	0	0	5.4	0	30
31	{ }	{ }	{ }	0	0	0	0	0	0	0	0	0	31	
Monatssumme					{43.0}	117.4	242.8 +	195.0	124.7	58.0	115.7	169.1	{41.9} -	mm
Niederschlagstage					{7}	15	16	17	11	7	12	18 +	{3} -	Tage
Niederschlagstage grösser oder gleich als [mm]				{148} >= 0.1	{60} >= 5		{42} >= 10		{14} >= 20		{2} >= 50		>= 100	Tage
Jahreswerte		Gesamtniederschlag {1107.6} mm					Niederschlagstage {106} Tage							



Periode		1975 - 2008										(34 Jahre)	
Mit Monatssumme				{156.0}	{178.1}	{199.3}+	{190.9}	{187.7}	{165.0}	{132.2}	{109.3} -	mm	
Max Tagessumme				{59.0} - 1977	{135.0}+ 1999	{72.0} 1987	{88.0} 1977	{87.0} 1978	{95.0} 2006	{89.0} 1997	{63.0} 2002	mm	
Periode	Max Gesamtniederschlag	{1847.0} (2002)					Min Gesamtniederschlag					{240.5} (1992)	mm



Jahressumme	1997	1998	1999	2000	2001	2002	2003	2004	2005	2006	2007	2008	mm
	{1289.5}	{1641.0}	{1442.5}	{1689.7}	{1450.6}	{1847.0}	{1243.0}	{1166.0}	{1371.9}	{1530.9}	{1380.8}	{1092.0}	mm

Ab 1. Mai 2007 Logger-Aufzeichnung mit Kippwaage (erhöhte Messgenauigkeit)
 Regenmesser im Winter nicht in Betrieb (keine Heizung):
 Einsatz vom 15. April - 7. Dez. 2009

Darstellung nach LHG Standard