

Niederschlag

Töss - Fischenthal / Beicher

ZH 513

Daten unvollständig { ... }

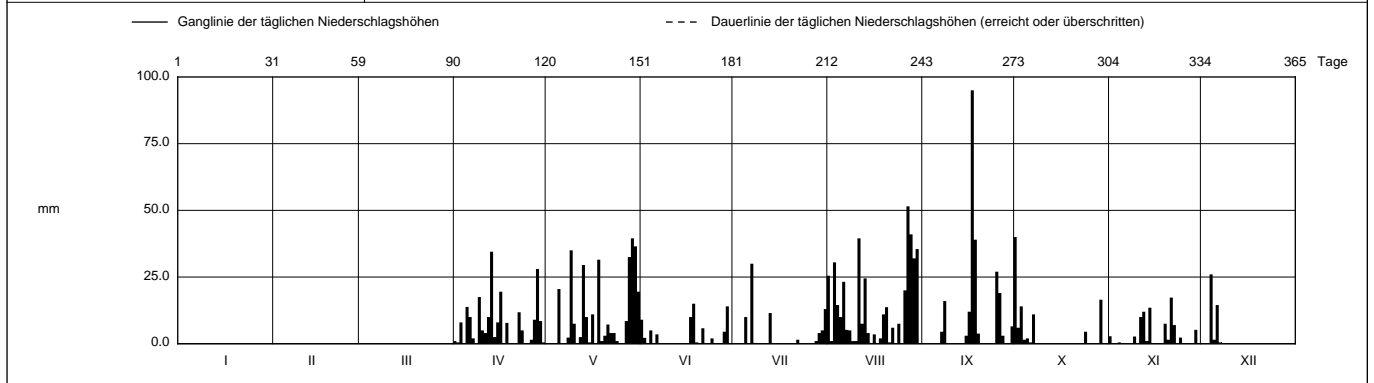
Koordinaten 714 190 / 242 360

Stations Höhe 770.0 müM

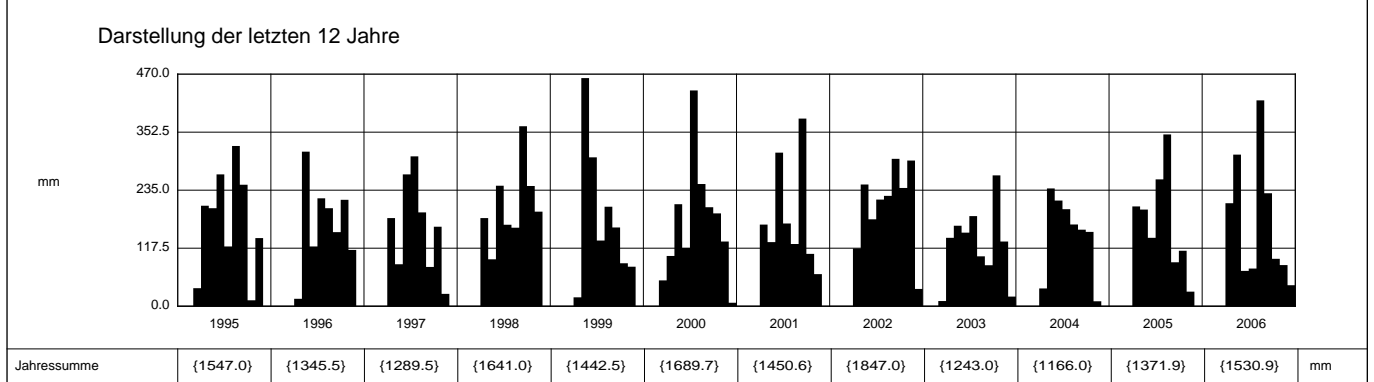
Fläche - km2

2006		Jan	Feb	März	April	Mai	Juni	Juli	Aug	Sept	Okt	Nov	Dez	
1	{ }	{ }	{ }	{ }	1.0	0	9.0	0	25.5	0	40.0 +	2.8	0	1
2	{ }	{ }	{ }	{ }	0.5	0	2.2	0	1.0	0	6.0	0	0	2
3	{ }	{ }	{ }	{ }	8.0	0	0	0	30.5	0	14.0	0	0	3
4	{ }	{ }	{ }	{ }	0	0	5.0	0	14.5	0	1.5	0.5	26.0 +	4
5	{ }	{ }	{ }	{ }	13.8	20.5	0	10.0	10.0	0	2.0	0	1.5	5
Tägliche Niederschlags-höhen														
6	{ }	{ }	{ }	{ }	10.0	0	3.5	0	23.2	0	0.5	0	14.5	6
7	{ }	{ }	{ }	{ }	2.0	0	0	30.0 +	5.2	4.5	11.0	0	0.5	7
8	{ }	{ }	{ }	{ }	0	2.3	0	0.3	5.0	16.0	0	0	{ }	8
9	{ }	{ }	{ }	{ }	17.5	35.0	0	0	1.0	0	0	2.7	{ }	9
10	{ }	{ }	{ }	{ }	5.0	7.5	0	0	1.0	0	0	0	{ }	10
11	{ }	{ }	{ }	{ }	4.0	0	0	0	39.5	0	0	10.0	{ }	11
12	{ }	{ }	{ }	{ }	10.0	2.5	0	0	7.5	0	0	12.0	{ }	12
13	{ }	{ }	{ }	{ }	34.5 +	29.5	0	11.5	24.5	0	0	1.0	{ }	13
14	{ }	{ }	{ }	{ }	2.5	10.0	0	0	4.0	0	0	13.5	{ }	14
15	{ }	{ }	{ }	{ }	8.0	0.5	0	0	0.3	3.0	0	0	{ }	15
mm														
16	{ }	{ }	{ }	{ }	19.5	11.0	0	0	3.5	12.0	0	0	{ }	16
17	{ }	{ }	{ }	{ }	0.2	0	10.0	0	0	95.0 +	0	0	{ }	17
18	{ }	{ }	{ }	{ }	7.8	31.5	15.0 +	0	2.0	39.0	0	0	{ }	18
19	{ }	{ }	{ }	{ }	0	1.0	0.5	0	11.0	3.8	0	7.5	{ }	19
20	{ }	{ }	{ }	{ }	0	3.0	0	0	13.7	0	0	1.5	{ }	20
21	{ }	{ }	{ }	{ }	0	7.2	5.8	0	0.5	0	0	17.3 +	{ }	21
22	{ }	{ }	{ }	{ }	11.8	4.0	0	1.5	6.0	0	0	7.0	{ }	22
23	{ }	{ }	{ }	{ }	5.0	4.0	0	0	0	0	0	0	{ }	23
+ Maximum														
24	{ }	{ }	{ }	{ }	0	1.0	2.0	0	7.5	0	4.5	2.3	{ }	24
25	{ }	{ }	{ }	{ }	0	0	0	0	0	27.0	0	0	{ }	25
26	{ }	{ }	{ }	{ }	1.5	0	0	0	20.0	19.0	0	0	{ }	26
27	{ }	{ }	{ }	{ }	9.0	8.5	0	0	51.5 +	3.0	0	0	{ }	27
28	{ }	{ }	{ }	{ }	28.0	32.5	4.5	1.0	41.0	0	0	0	{ }	28
29	{ }	{ }	{ }	{ }	8.5	39.5 +	14.0	4.0	32.0	0	16.5	5.2	{ }	29
30	{ }	{ }	{ }	{ }	0.5	36.5	0	5.0	35.5	6.5	0	0	{ }	30
31	{ }	{ }	{ }	{ }		19.5		13.0	0		0		{ }	31

Monatssumme				208.6	307.0	71.5	76.3	416.9 +	228.8	96.0	83.3	{42.5} -	mm
Niederschlagstage				20	20	10	8	25 +	11	8	12	{3} -	Tage
Niederschlagstage grösser oder gleich als [mm]			{128} >= 0.1	{79} >= 5	{55} >= 10	{25} >= 20	{2} >= 50						Tage
Jahreswerte			Gesamtniederschlag {1530.9} mm				Niederschlagstage {117} Tage						



Periode	1975 - 2006 (32 Jahre)												
Mit Monatssumme				{156.0}	{178.3}	{201.2}+	{187.9}	{184.3}	{167.9}	{135.2}	{114.2} -		mm
Max Tagessumme Jahr				{59.0} - 1977	{135.0}+ 1999	{72.0} 1987	{88.0} 1977	{87.0} 1978	{95.0} 2006	{89.0} 1997	{63.0} 2002		mm
Periode	Max Gesamtniederschlag {1847.0} (2002)					Min Gesamtniederschlag {240.5} (1992)							



Jahressumme	{1547.0}	{1345.5}	{1289.5}	{1641.0}	{1442.5}	{1689.7}	{1450.6}	{1847.0}	{1243.0}	{1166.0}	{1371.9}	{1530.9}	mm
-------------	----------	----------	----------	----------	----------	----------	----------	----------	----------	----------	----------	----------	----

Regenmesser im Winter nicht in Betrieb (keine Heizung):
Einsatz vom 1. April - 7. Dez. 2006

Darstellung nach LHG Standard