

Niederschlag

Rhein - Weiach

ZH 503

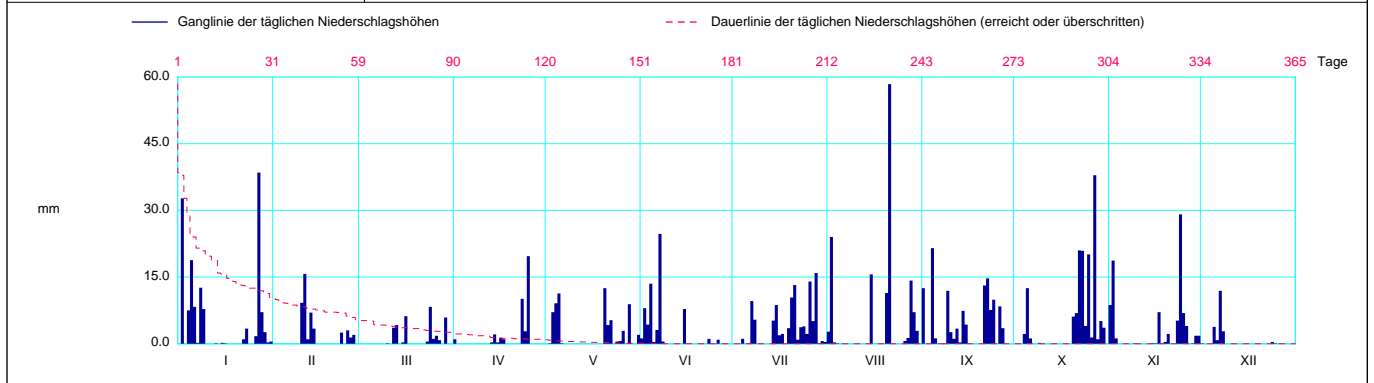
Koordinaten 2 676 110 / 1 268 980

Stations Höhe 357.0 m ü.M.

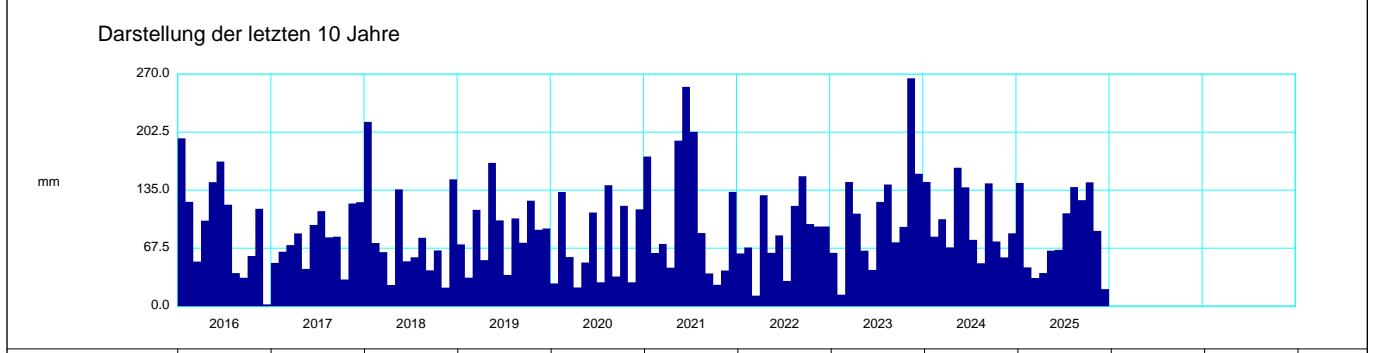
Fläche - km2

2025		Jan	Feb	Mar	Apr	Mai	Jun	Jul	Aug	Sep	Okt	Nov	Dez		
1		0	0	0	1.0	0	1.2	0	2.7	12.5	0	8.7	0.1	1	
2		32.7	0	0	0	0.1	8.0	0	24.0	0	0	18.7	0	2	
3		0	0	0	0	7.1	4.3	0	0.3	0	0	1.2	0	3	
4		7.5	0	0	0	9.1	13.5	1.1	0.1	21.5 +	2.2	0	0	4	
5		18.8	0	0	0	11.3	0.4	0	0	1.2	12.5	0	3.8	5	
6	Tägliche Niederschlags-höhen	8.3	0	0	0	0.1	3.1	0.1	0	0	1.2	0	0.8	6	
7		0.2	0	0	0	0	24.7 +	9.6	0	0	0	0	11.9 +	7	
8		12.6	0	0	0	0	0.5	5.4	0	0	0	0	2.8	8	
9		7.8	0	0	0	0	0	0	0	11.9	0.2	0.1	0	9	
10		0	9.2	0.1	0	0	0	0	0	2.6	0	0	0	10	
11		0	15.7 +	0	0	0	0	0	0	1.1	0	0	0	11	
12		0	1.0	3.6	0	0	0	0	3.4	0	0	0	0	12	
13		0.1	7.0	4.2	0.3	0	0	0	0.3	0	0	0	0	13	
14		0	3.4	0	2.1	0	0	5.2	0	7.4	0	0	0	14	
15		0.2	0	0.3	0.3	0	7.8	8.7	15.6	4.3	0	0.1	0	15	
16	mm	0.1	0	6.2	1.3	0	0	1.9	0	0	0	0.1	0	16	
17		0	0	0	1.0	0	0	2.2	0	0	0	7.1	0	17	
18		0	0	0	0	0	0	0	0	0	0	0.1	0	18	
19		0	0	0	0	0	0	3.5	0	0	0	0.4	0	19	
20		0	0	0	0	12.5 +	0	10.4	11.4	0	6.1	2.2	0	20	
21		0	0	0	0	4.2	0	13.2	58.4 +	13.1	6.9	0	0	21	
22		1.0	0	0	0	5.3	0	0.9	0	14.7	21.0	0	0	22	
23		3.4	2.5	0.5	10.1	0	1.1	3.7	0	7.6	20.9	5.2	0	23	
24	+ Maximum	0	0	8.3 +	2.8	0.5	0	3.9	0	9.9	4.0	29.1 +	0.4	24	
25		0	3.0	1.1	19.7 +	0.6	0	2.2	0	0	20.1	6.9	0.1	25	
26		1.7	1.4	1.8	0	2.9	0.9	14.0	0.6	8.4	1.4	4.0	0	26	
27		38.5 +	2.0	0.8	0	0	0	5.1	1.3	3.5	37.9 +	0	0	27	
28		7.1	0	0	0	8.9	0	15.9 +	14.2	0	1.0	0.1	0	28	
29		2.6	0	5.9	0	0	0	0.1	7.1	0	5.1	1.8	0	29	
30		0.3	0	0	0	0	0	0.6	2.9	0	3.6	1.8	0	30	
31		0.5	0	0	0	2.0	0	0.4	0	0	0	0	0	31	
Monatssumme		143.4	45.2	32.8	38.6	64.6	65.5	108.1	138.6	123.4	144.1 +	87.6	19.9 -	mm	
Niederschlagstage		12	9	7	7	9	8	16 +	9	15	14	11	3 -	Tage	
Niederschlagstage grösser oder gleich als [mm]		159 >= 0.1		65 >= 5			33 >= 10		11 >= 20		1 >= 50		>= 100		Tage
Jahreswerte		Gesamtniederschlag 1011.8 mm					Niederschlagstage 120 Tage								

Ganglinie der täglichen Niederschlagshöhen		Dauerlinie der täglichen Niederschlagshöhen (erreicht oder überschritten)												
mm		Tage												
		1	31	59	90	120	151	181	212	243	273	304	334	365



Periode	2016 - 2025 (10 Jahre)												
Mit Monatssumme	114.4 +	69.4	71.8	67.3 -	108.6	110.7	88.9	97.3	79.4	82.6	91.5	95.8	mm
Max Tagessumme Jahr	42.2 2021	40.9 2024	32.3 - 2019	34.3 2023	61.9 + 2018	61.3 2021	52.3 2021	58.4 2025	51.9 2024	37.9 2025	41.4 2023	41.2 2021	mm
Periode	Max Gesamtniederschlag 1326.6 (2021)						Min Gesamtniederschlag 858.5 (2020)						mm



Jahressumme	1144.2	950.6	976.0	1051.8	858.5	1326.6	994.0	1283.3	1181.5	1011.8			mm
-------------	--------	-------	-------	--------	-------	--------	-------	--------	--------	--------	--	--	----

Darstellung nach BWS Standard