

Niederschlag

Rhein - Weiach

ZH 503

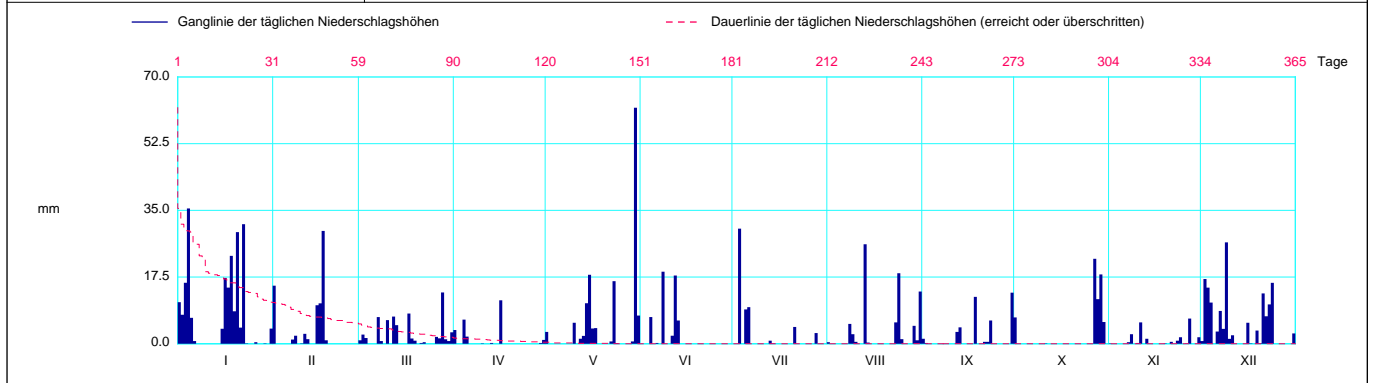
Koordinaten 2 676 110 / 1 268 980

Stations Höhe 357.0 müM

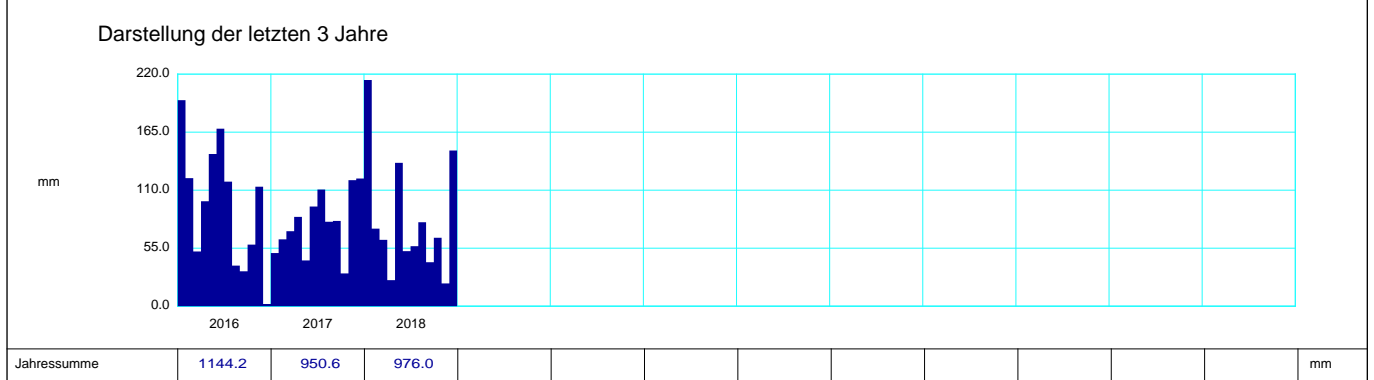
Fläche - km2

2018		Jan	Feb	März	April	Mai	Juni	Juli	Aug	Sept	Okt	Nov	Dez	
1		10.9	15.2	0.9	3.6	3.1	0	0	0.4	1.3	6.9	0.1	0.7	1
2		7.6	0	2.4	0	0	0	0	0	0.2	0	0	17.0	2
3		16.0	0	1.5	0	0	0	30.2 +	0	0	0	0	14.7	3
4		35.5 +	0	0	6.3	0	7.0	0	0	0	0	0	10.8	4
5		6.8	0	0	1.9	0	0	9.0	0	0	0	0	0	5
6	Tägliche Niederschlags-höhen	0.7	0	0	0	0	0.2	9.6	0	0	0	0	3.2	6
7		0	1.1	7.0	0	0	0	0	0	0	0	0.4	8.6	7
8		0	2.1	0.7	0	0	18.9 +	0	5.2	0	0	2.5	3.9	8
9		0	0	0	0	0	0	0	2.5	0	0	0	26.6 +	9
10		0	0.1	6.2	0.1	5.5	0	0	0.5	0	0	0.2	1.3	10
11		0	2.6	0	0	0	2.1	0	0	0	0.1	5.6	2.2	11
12		0	1.2	7.1	0	1.3	17.9	0	0	3.1	0	0	0	12
13		0	0	4.9	0.2	2.1	6.1	0.8	26.1 +	4.3	0	1.3	0	13
14		0	0	0	0	10.6	0	0.1	0.3	0	0	0	0	14
15		3.9	10.1	0	0	18.1	0	0	0	0	0	0	0	15
16	mm	17.3	10.6	0	11.4 +	4.0	0	0	0	0	0	0	5.5	16
17		14.7	29.6 +	7.9	0	4.1	0	0	0	0	0	0	0.1	17
18		23.1	0.9	1.4	0	0	0	0	0	12.3	0	0	0	18
19		8.5	0	0.8	0	0	0	0	0	0	0	0.1	3.5	19
20		29.3	0	0	0	0	0	0	0	0	0	0	0.1	20
21		4.2	0	0.2	0	0	0	4.4	0	0.5	0	0.5	13.2	21
22		31.4	0	0.4	0	0.6	0	0	0	0.5	0	0	7.2	22
23		0.1	0	0	0	16.4	0	0	5.6	6.1	0	0.8	10.3	23
24	+ Maximum	0	0	0	0	0.2	0	0	18.5	0	0	1.7	16.0	24
25		0	0	0	0	0	0	0	1.2	0	0	0	0	25
26		0.4	0	1.8	0	0	0	0	0	0	0	0.1	0	26
27		0	0	1.4	0	0	0	0	0	0	22.3 +	6.6 +	0	27
28		0	0	13.5 +	0	0	0	2.8	0	0	11.7	0	0	28
29		0.1	0	1.2	0.2	0.6	0	0	4.7	0	18.2	0	0	29
30		0	0	0.7	1.0	61.9 +	0	0	0.9	13.4 +	5.7	1.7	0	30
31		4.0	0	3.0	0	7.4	0	0	13.7	0	0	0	2.7	31

Monatssumme	214.4 +	73.5	62.9	24.7	135.9	52.2	56.9	79.6	41.7	64.9	21.6 -	147.6	mm	
Niederschlagstage	14	8	13	5 -	11	5 -	5 -	8	6	5 -	6	16 +	Tag	
Niederschlagstage grösser oder gleich als [mm]			141 >= 0.1	60 >= 5	36 >= 10	10 >= 20	1 >= 50	>= 100						Tag
Jahreswerte	Gesamtniederschlag 976.0 mm				Niederschlagstage 102 Tage									



Periode	2016 - 2018 (3 Jahre)												
Mit Monatssumme	153.4 +	86.1	62.0	69.6	107.9	105.0	95.2	66.1	51.9	51.4 -	84.8	90.2	mm
Max Tagessumme Jahr	35.5 2018	29.6 2018	17.6 - 2017	31.1 2017	61.9 + 2018	31.3 2017	42.1 2016	26.1 2018	28.3 2017	22.3 2018	36.7 2017	26.9 2017	mm
Periode	Max Gesamtniederschlag 1144.2 (2016)						Min Gesamtniederschlag 950.6 (2017)						



Jahressumme	1144.2	950.6	976.0										mm
-------------	--------	-------	-------	--	--	--	--	--	--	--	--	--	----

Darstellung nach LHG Standard