

Abfluss

Schwarzenbach - Rickenbach

ZH 579

Koordinaten 703 195 / 268 105

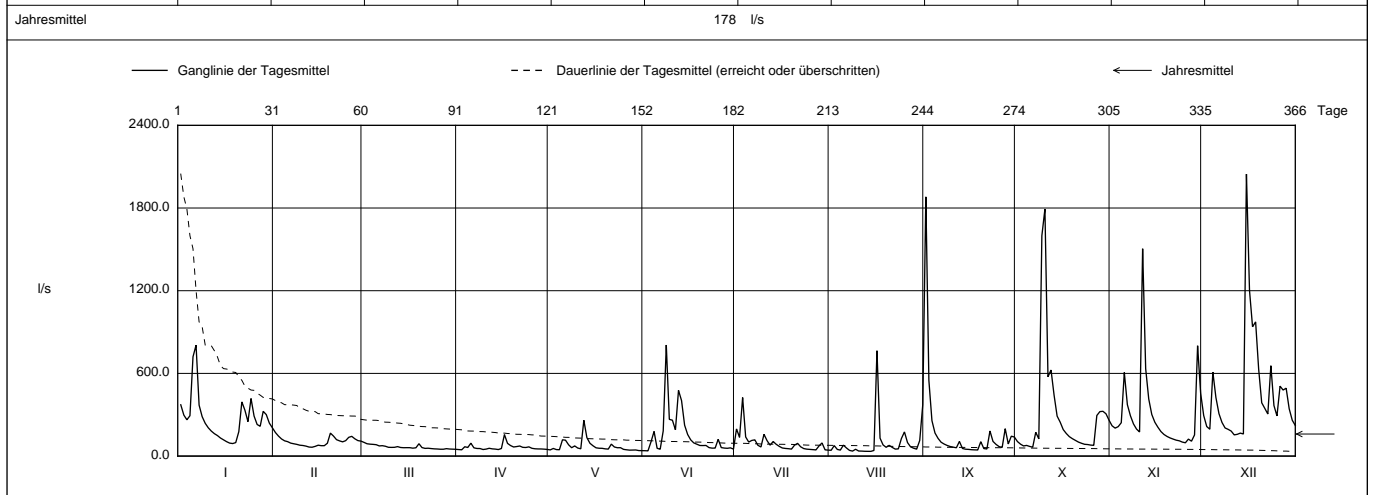
Stations Höhe 410.0 müM

Fläche 15 km2

Mittlere Höhe 454.0 müM

Vergletscherung - %

2012	Jan	Feb	März	April	Mai	Juni	Juli	Aug	Sept	Okt	Nov	Dez		
1	372	171 +	99.7 +	47.3	44.8	39.0	197	42.1	1880 +	106	220	294	1	
2	298	145	89.4	45.8 -	55.4	38.0 -	136	76.1	549	86.6	203	214	2	
3	263	124	86.5	67.7	47.2	104	425 +	48.3	257	73.8	214	195	3	
4	293	111	84.9	62.4	46.1	179	139	43.3	168	77.4	242	610	4	
5	720	105	82.6	93.6	118	56.5	102	79.3	128	70.0	607	426	5	
Tagesmittel														
6	805 +	94.1	73.8	59.9	115	49.5	114	59.0	101	64.6 -	373	308	6	
7	370	89.5	75.5	55.2	82.1	183	118	41.4	87.4	173	293	244	7	
8	286	84.9	71.5	54.7	60.7	806 +	78.6	36.3	77.0	125	233	204	8	
9	238	79.0	64.0	47.6	73.8	266	66.0	49.5	69.4	1600	196	194	9	
10	205	76.9	63.1	50.8	58.4	261	158	36.8	64.7	1790 +	175	181	10	
11	181	72.5	63.6	56.7	52.9	191	112	36.2	60.3	575	1500 +	154 -	11	
12	163	65.6	68.7	52.4	260 +	477	79.4	34.8	106	625	635	158	12	
13	149	64.3 -	62.4	50.7	134	403	106	34.5	55.2	442	415	167	13	
14	131	70.5	60.7	47.4	92.8	224	85.5	34.3 -	49.9	290	302	160	14	
15	118	79.0	61.2	55.0	74.9	157	70.5	40.8	48.6	246	246	2050 +	15	
<i>l/s</i>														
16	105	75.5	61.0	156 +	60.1	118	58.8	765 +	46.2	192	210	1200	16	
17	94.2	75.4	57.6	92.4	57.0	95.7	55.5	130	45.0	164	178	938	17	
18	90.9 -	93.0	60.1	76.5	56.4	86.3	53.5	81.0	44.4 -	141	157	974	18	
19	97.9	167	89.8	66.0	52.5	76.8	50.8	63.6	104	126	143	632	19	
20	178	145	61.8	69.1	50.8	76.5	79.2	77.8	54.7	114	132	387	20	
21	393	119	56.0	73.2	86.7	77.2	92.6	62.9	51.4	101	123	347	21	
22	333	110	57.2	63.4	66.1	61.6	67.5	50.7	182	93.0	115	305	22	
23	250	103	54.5	62.4	60.5	57.6	54.6	52.3	107	85.6	111	656	23	
+ Maximum	24	418	112	52.5	67.0	61.1	58.1	50.3	127	84.8	83.7	102	367	24
	25	290	136	51.4	56.6	48.8	122	175	68.7	79.8	96.5 -	292	25	
- Minimum	26	229	143	49.8	53.1	45.6	61.7	46.9	98.2	63.2	78.3	123	508	26
	27	216	125	49.7	51.8	43.1	58.0	44.7	67.2	199	294	108	479	27
	28	325	113	54.0	51.7	43.8	56.5	73.0	57.1	87.8	323	153	493	28
	29	301	109	51.3	50.3	44.3	59.8	95.5	50.0	144	325	801	343	29
	30	239		50.2	48.4	40.1	50.8	45.3	113	138	307	456	260	30
	31	205		49.3 -		39.5 -		43.4 -	373		260		222	31
Monatsmittel	270	105	65.0	62.8 -	70.1	152	95.0	98.0	171	294	295	450 +	<i>l/s</i>	
Maximum (Spitze)	2540	224	135 -	424	2230	3130	2470	4550 +	3860	4360	3330	3200	<i>l/s</i>	
Datum	5.	19.	19.	21.	12.	8.	3.	16.	1.	9.	11.	15.		
Jahresmittel	178 <i>l/s</i>													



Periode	1992 - 2012												(21 Jahre)
Monatsmittel	229	215	229	198	173	142	114	113	110 -	144	186	279 +	<i>l/s</i>
Maximum (Spitze)	3900	4610	5080	4590	8990 +	5770	6480	6420	3860 -	4360	4390	4160	<i>l/s</i>
Jahr	2003	1999	2006	2008	1994	1995	1992	2007	2012	2012	1998	2011	
Minimum (Tagesmittel)	53 +	52	49	46	35	27	20	17 -	22	25	30	32	<i>l/s</i>
Jahr	1992	1992	2012	2012	1998	2011	1998	1998	1998	1992	2011	2011	
Periode	Grösstes Jahresmittel 269 (2001)			Periodenmittel 178				Kleinstes Jahresmittel 102 (1997)					<i>l/s</i>

Dauer der Abflüsse (erreicht oder überschritten)													
Tage	1	3	6	9	18	36	55	73	91	114	137	160	
2012	2050	1790	1200	806	610	373	293	238	194	157	125	107	<i>l/s</i>
1992 - 2012	1950	1240	896	726	495	349	271	229	197	164	141	127	<i>l/s</i>
Tage	182	205	228	251	274	292	310	329	347	356	362	365	
2012	93.0	81.0	73.8	64.3	59.9	55.5	51.7	49.3	44.7	40.8	36.3	34.5	<i>l/s</i>
1992 - 2012	114	102	91	81	73	66	58	50	41	33	28	21	<i>l/s</i>

Darstellung nach LHG Standard