

Abfluss

Schwarzenbach - Rickenbach

ZH 579

Koordinaten 703 195 / 268 105

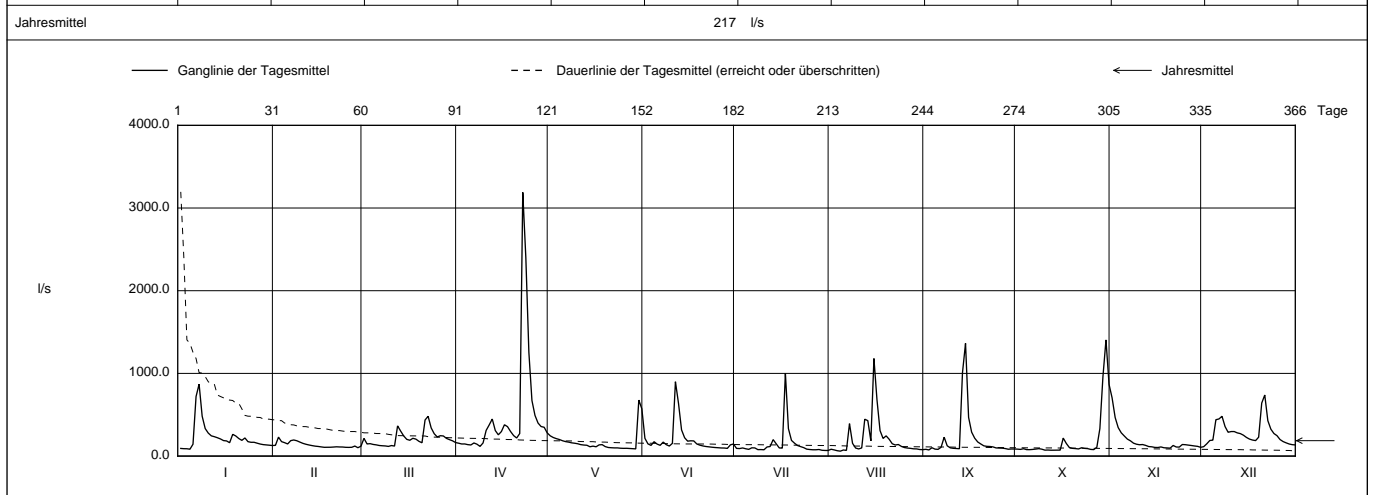
Stations Höhe 410.0 müM

Fläche 15 km2

Mittlere Höhe 454.0 müM

Vergletscherung - %

| 2008 | | Jan | Feb | März | April | Mai | Juni | Juli | Aug | Sept | Okt | Nov | Dez | |
|---------------------------|-----|------------|-----------|-------------|-------------|-------------|-------------|-------------|------------|-------------|-------------|-----------|-------------|-----|
| Tagesmittel | 1 | 92.6 | 130 | 214 | 156 | 245 | 214 | 93.0 | 83.0 | 82.0 | 84.3 | 705 + | 114 - | 1 |
| | 2 | 89.4 | 229 + | 147 | 147 | 225 | 147 | 90.8 | 74.4 | 74.3 - | 80.9 | 467 | 148 | 2 |
| | 3 | 88.8 | 175 | 150 | 147 | 211 | 129 | 98.4 | 64.9 | 101 | 89.0 | 345 | 189 | 3 |
| | 4 | 83.3 - | 162 | 141 | 138 | 200 | 174 | 88.6 | 59.6 - | 84.1 | 78.0 | 281 | 193 | 4 |
| | 5 | 144 | 147 | 136 | 135 | 186 | 145 | 81.2 | 73.6 | 81.4 | 77.9 | 243 | 440 | 5 |
| | 6 | 720 | 187 | 128 | 159 | 175 | 130 | 99.9 | 69.1 | 107 | 80.7 | 206 | 449 | 6 |
| | 7 | 870 + | 195 | 125 | 144 | 169 | 169 | 98.6 | 392 | 229 | 84.9 | 185 | 482 | 7 |
| | 8 | 482 | 186 | 123 | 117 - | 160 | 138 | 78.1 | 154 | 124 | 89.9 | 156 | 357 | 8 |
| | 9 | 333 | 169 | 117 | 159 | 155 | 121 | 78.7 | 97.4 | 99.6 | 83.6 | 144 | 288 | 9 |
| | 10 | 278 | 154 | 127 | 310 | 149 | 154 | 76.6 | 86.3 | 93.9 | 71.9 | 137 | 297 | 10 |
| | 11 | 245 | 143 | 121 | 377 | 138 | 899 + | 110 | 98.6 | 91.6 | 73.4 | 140 | 297 | 11 |
| | 12 | 235 | 134 | 366 | 448 | 134 | 638 | 116 | 446 | 88.6 | 71.0 - | 129 | 281 | 12 |
| | 13 | 222 | 127 | 302 | 309 | 131 | 317 | 199 | 429 | 1010 | 71.4 | 115 | 272 | 13 |
| | 14 | 207 | 120 | 244 | 257 | 113 | 222 | 148 | 183 | 1360 + | 71.9 | 112 | 253 | 14 |
| | 15 | 187 | 117 | 203 | 297 | 120 | 181 | 98.7 | 1180 + | 468 | 72.3 | 105 | 226 | 15 |
| l/s | 16 | 183 | 111 | 191 | 379 | 113 | 185 | 96.5 | 681 | 290 | 218 | 104 | 205 | 16 |
| | 17 | 162 | 106 | 215 | 356 | 136 | 184 | 1000 + | 308 | 216 | 153 | 111 | 194 | 17 |
| | 18 | 263 | 107 | 205 | 298 | 138 | 147 | 332 | 214 | 171 | 104 | 101 | 187 | 18 |
| | 19 | 243 | 107 | 178 | 248 | 115 | 132 | 190 | 244 | 146 | 93.6 | 98.6 | 229 | 19 |
| | 20 | 212 | 109 | 161 | 219 | 104 | 123 | 156 | 203 | 124 | 90.8 | 95.8 - | 641 | 20 |
| + Maximum | 21 | 190 | 112 | 437 | 273 | 101 | 116 | 127 | 149 | 118 | 86.3 | 129 | 739 + | 21 |
| | 22 | 219 | 110 | 481 + | 3190 + | 98.9 | 112 | 115 | 134 | 116 | 101 | 110 | 429 | 22 |
| | 23 | 175 | 110 | 341 | 2400 | 98.9 | 107 | 102 | 140 | 111 | 93.1 | 109 | 326 | 23 |
| | 24 | 167 | 106 | 270 | 1250 | 95.1 | 103 | 83.9 | 117 | 98.8 | 90.2 | 140 | 273 | 24 |
| | 25 | 167 | 105 | 231 | 672 | 93.6 | 101 | 79.4 | 103 | 97.1 | 80.7 | 138 | 247 | 25 |
| - Minimum | 26 | 156 | 107 | 247 | 492 | 94.2 | 98.2 | 76.3 | 97.1 | 95.8 | 78.5 | 133 | 200 | 26 |
| | 27 | 146 | 121 | 243 | 399 | 91.8 | 97.3 | 76.5 | 93.6 | 91.3 | 106 | 128 | 176 | 27 |
| | 28 | 139 | 101 - | 214 | 357 | 89.8 | 93.2 - | 79.7 | 87.6 | 83.0 | 333 | 122 | 160 | 28 |
| | 29 | 135 | 119 | 199 | 349 | 87.2 - | 136 | 70.4 | 86.7 | 85.9 | 961 | 118 | 146 | 29 |
| | 30 | 132 | 184 | 281 | 281 | 677 + | 146 | 68.1 | 79.4 | 85.3 | 1410 + | 106 | 138 | 30 |
| 31 | 128 | | 163 | | 571 | | 67.8 - | 77.6 | | 867 | | 135 | 31 | |
| Monatsmittel | | 229 | 135 - | 213 | 482 + | 168 | 189 | 138 | 203 | 201 | 195 | 174 | 281 | l/s |
| Maximum (Spitze) Datum | | 1670 7. | 424 2. | 1020 12. | 4590 22. | 5890 30. | 2370 11. | 3580 17. | 5890 7. | 3200 13. | 1820 30. | 884 1. | 1110 20. | l/s |
| Jahresmittel | | 217 l/s | | | | | | | | | | | | |



| Periode | 1992 - 2008 (17 Jahre) | | | | | | | | | | | | |
|-------------------------------|----------------------------------|--------------|--------------|--------------------|----------------|--------------|--------------|-----------------------------------|--------------|----------------|--------------|--------------|-----|
| Monatsmittel | 221 | 218 | 239 + | 220 | 187 | 144 | 116 | 115 | 110 - | 143 | 186 | 232 | l/s |
| Maximum (Spitze) Jahr | 3900 2003 | 4610 1999 | 5080 2006 | 4590 2008 | 8990 + 1994 | 5770 1995 | 6480 1992 | 6420 2007 | 3730 2000 | 3110 - 1998 | 4390 1998 | 3290 1995 | l/s |
| Minimum (Tagesmittel) Jahr | 53 1992 | 52 1992 | 55 + 2005 | 54 1997 | 35 1998 | 31 2003 | 20 1998 | 17 - 1998 | 22 1998 | 25 1992 | 32 1997 | 35 1997 | l/s |
| Periode | Grösstes Jahresmittel 269 (2001) | | | Periodenmittel 177 | | | | Kleinstes Jahresmittel 102 (1997) | | | | | l/s |

| Dauer der Abflüsse (erreicht oder überschritten) | | | | | | | | | | | | | |
|--|------|------|------|-----|-----|------|------|------|------|------|------|------|-----|
| Tage | 1 | 3 | 6 | 9 | 18 | 36 | 55 | 73 | 91 | 114 | 137 | 160 | |
| 2008 | 3190 | 1410 | 1180 | 961 | 672 | 392 | 298 | 247 | 219 | 193 | 171 | 150 | l/s |
| 1992 - 2008 | 1950 | 1220 | 884 | 711 | 488 | 346 | 269 | 229 | 197 | 165 | 143 | 129 | l/s |
| Tage | 182 | 205 | 228 | 251 | 274 | 292 | 310 | 329 | 347 | 356 | 362 | 365 | |
| 2008 | 140 | 130 | 118 | 110 | 101 | 97.1 | 90.8 | 83.9 | 77.9 | 72.3 | 69.1 | 64.9 | l/s |
| 1992 - 2008 | 116 | 103 | 92 | 83 | 74 | 67 | 60 | 52 | 41 | 33 | 28 | 20 | l/s |

Darstellung nach LHG Standard