

Abfluss

Chatzenbach - Turbenthal

ZH 563

Koordinaten 707 640 / 254 665

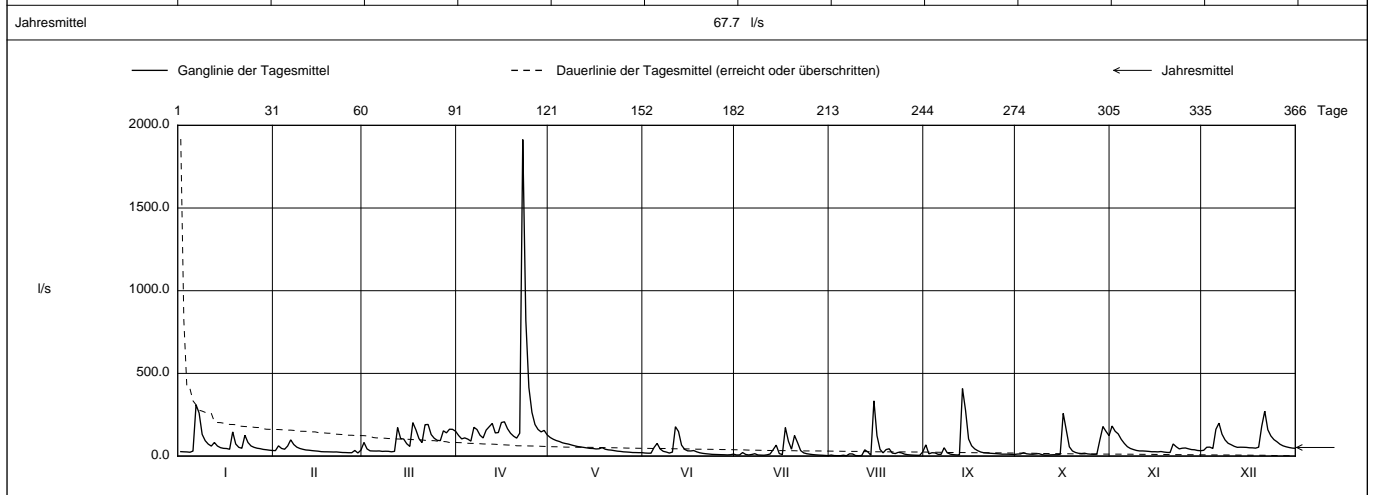
Stations Höhe 580.0 müM

Fläche 5.7 km2

Mittlere Höhe - müM

Vergletscherung - %

2008	Jan	Feb	März	April	Mai	Juni	Juli	Aug	Sept	Okt	Nov	Dez	
1	26.9	33.1	82.3	124	112 +	18.6	6.89	6.49	67.8	12.2	182 +	35.1 -	1
2	25.8	62.1	43.4	104	102	17.6	6.91	3.07	13.4	12.9	150	53.4	2
3	25.2	46.3	31.5	110	93.8	17.7	21.4	2.38	20.4	20.1	134	54.2	3
4	23.2 -	41.2	30.8	103	88.2	51.9	10.0	2.50	19.3	13.9	101	46.0	4
5	30.3	60.9	30.4	90.5 -	80.3	76.7	6.73	5.28	10.8	11.8	76.8	162	5
Tagesmittel													
6	310 +	98.2 +	31.1	174	76.0	42.8	9.85	2.14 -	10.6	11.2	56.9	199	6
7	261	70.0	28.4	161	72.5	28.8	14.3	13.5	50.6	12.7	46.0	132	7
8	131	54.1	29.4	126	66.9	24.6	6.71	12.9	19.9	14.8	39.5	97.5	8
9	93.2	45.9	28.9	110	62.0	18.4	5.79	3.12	11.9	9.08	34.0	77.6	9
10	72.2	40.9	26.0 -	157	57.7	23.9	5.24	2.47	8.67	6.09 -	31.2	68.6	10
11	60.4	37.0	28.5	177	55.2	178 +	7.57	3.33	7.09	6.26	31.1	59.1	11
12	82.2	35.5	173	197	52.5	149	12.6	37.8	6.57 -	7.65	30.0	52.9	12
13	60.9	33.1	106	140	49.3	66.3	39.1	25.5	408 +	8.34	28.4	53.7	13
14	51.0	31.2	103	142	46.6	40.9	66.1	5.09	278	7.86	26.3	53.4	14
15	46.8	29.7	74.6	203	46.0	31.6	15.4	334 +	103	10.4	26.4	52.7	15
<i>l/s</i>													
16	45.9	26.7	58.5	207	43.1	31.0	8.81	124	62.3	258 +	25.6	50.3	16
17	41.3	25.9	202 +	165	44.1	33.3	173 +	40.4	43.6	157	27.5	49.8	17
18	146	25.8	159	138	51.0	25.5	89.9	19.7	32.5	56.3	24.4	48.1	18
19	73.0	25.3	106	120	41.7	19.9	41.7	39.5	24.6	31.2	22.3	53.9	19
20	52.9	24.6	81.5	109	37.7	16.4	125	44.2	20.1	22.0	21.6 -	180	20
21	47.3	24.9	190	138	35.9	14.3	81.0	18.2	18.8	16.9	73.4	272 +	21
22	126	23.3	191	1910 +	32.9	12.4	33.3	15.3	17.3	15.5	56.7	159	22
23	82.3	21.6	130	820	29.8	10.5	19.4	22.9	15.9	17.4	43.6	122	23
+ Maximum													
24	61.3	21.3	108	415	28.2	9.77	14.2	19.6	14.9	13.0	47.8	99.6	24
25	52.8	20.4	95.4	264	25.6	9.15	11.4	12.1	13.4	11.6	49.0	86.6	25
- Minimum													
26	47.5	20.4	93.6	191	24.7	8.55	9.06	8.51	11.7	10.8	44.0	71.4	26
27	44.9	34.2	153	161	23.3	8.07	7.32	6.78	11.7	11.8	39.4	61.9	27
28	40.5	18.5 -	140	146	21.5	7.08 -	5.96	5.68	11.4	97.8	38.2	56.1	28
29	38.3	36.1	162	155	21.3	8.25	5.23	5.01	10.7	179	33.9	51.7	29
30	35.6	162	128	20.7 -	11.9	3.91	4.29	10.0	149	32.4	48.3	30	
31	33.8	150	20.8	20.8	20.8	2.78 -	25.5	124	124	124	47.0	31	
Monatsmittel	73.2	36.8	97.7	240 +	50.4	33.7	27.9 -	28.1	45.2	43.1	52.4	85.7	<i>l/s</i>
Maximum (Spitze) Datum	1090 6.	138 6.	496 17.	2730 22.	163 1.	696 11.	1010 20.	982 15.	1440 13.	1130 16.	281 1.	357 20.	<i>l/s</i>
Jahresmittel	67.7 <i>l/s</i>												



Periode	1985 - 2008 (24 Jahre)												
Monatsmittel	87.6	94.1	119 +	114	99.8	85.9	51.3	38.3 -	44.3	43.9	71.6	95.4	<i>l/s</i>
Maximum (Spitze) Jahr	2190 - 2004	5180 1999	2310 2001	2730 2008	6630 + 1999	3820 2001	3230 1989	3270 2007	2990 2000	3120 1998	2190 2002	2450 1997	<i>l/s</i>
Minimum (Tagesmittel) Jahr	3.4 1992	5.0 1992	11.0 + 1993	4.6 1997	0.4 2000	0.9 2003	0.0 - 2003	0.0 - 2003	0.0 - 2003	0.0 - 2003	0.0 - 1991	0.4 1991	<i>l/s</i>
Periode	Grösstes Jahresmittel 156 (1999)			Periodenmittel 78.7				Kleinstes Jahresmittel 37.5 (2003)					<i>l/s</i>

Dauer der Abflüsse (erreicht oder überschritten)													
Tage	1	3	6	9	18	36	55	73	91	114	137	160	
2008	1910	415	310	264	191	157	128	103	82.2	61.9	52.5	45.9	<i>l/s</i>
1985 - 2008	851	582	450	371	274	189	141	112	93.3	73.8	60.3	50.0	<i>l/s</i>
Tage	182	205	228	251	274	292	310	329	347	356	362	365	
2008	38.3	31.2	26.3	22.3	18.5	13.9	11.6	8.55	6.26	5.01	2.78	2.38	<i>l/s</i>
1985 - 2008	41.8	34.0	27.2	21.5	17.1	13.4	10.1	6.6	3.3	1.3	0.0	0.0	<i>l/s</i>

Darstellung nach LHG Standard

Standort der Messstation vor dem Rückhaltebecken.