

Abfluss

Dorfbach - Maur

ZH 532

Koordinaten 693 065 / 244 100

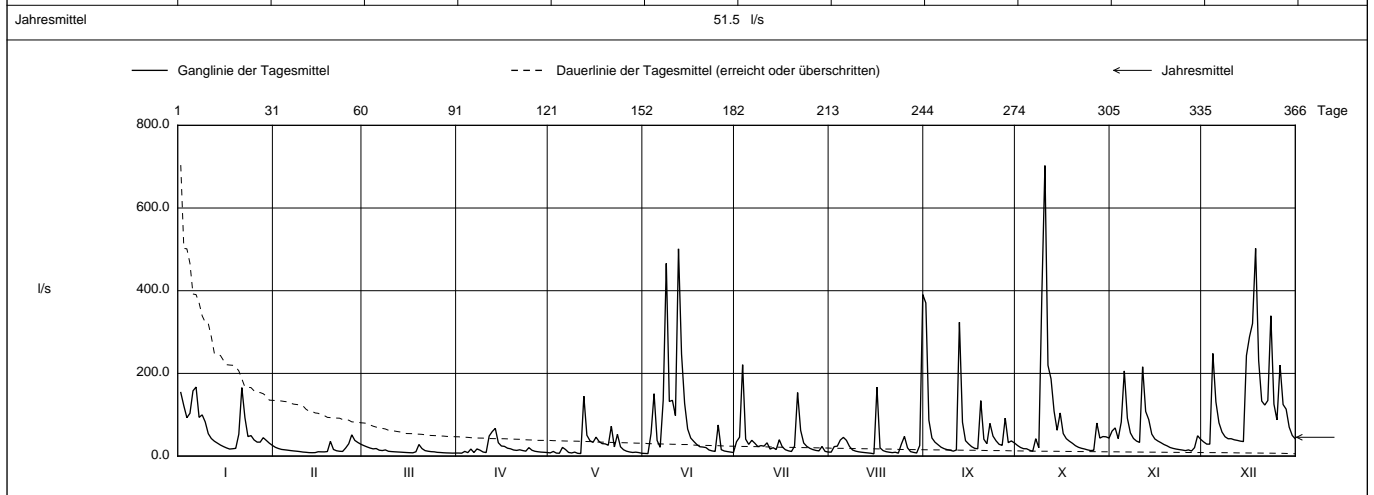
Stations Höhe 450.0 müM

Fläche 2.3 km2

Mittlere Höhe 608.0 müM

Vergletscherung - %

2012		Jan	Feb	März	April	Mai	Juni	Juli	Aug	Sept	Okt	Nov	Dez	
1	154	21.2	25.2	7.34	7.72	6.36	34.8	9.50	370 +	25.8	60.6	34.2	1	
2	122	18.2	22.2	7.09 -	11.2	5.97 -	45.7	23.0	86.9	20.9	68.1	29.0	2	
3	92.9	16.1	19.5	11.4	7.22	54.4	221 +	23.9	43.7	17.9	42.3	28.9 -	3	
4	103	15.2	17.4	8.33	6.86	151	41.0	38.9	33.6	17.7	82.4	248	4	
5	158	14.3	18.2	17.0	21.1	37.8	28.3	45.3	27.5	14.1	206	131	5	
Tagesmittel														
6	167 +	13.3	14.3	8.56	15.9	21.4	38.2	38.0	21.5	11.6 -	91.7	80.5	6	
7	93.7	12.4	13.4	17.3	8.84	135	31.1	23.3	17.9	42.1	56.0	58.2	7	
8	99.7	11.7	14.9	14.3	7.55	466	22.9	14.8	15.5	20.1	42.6	46.7	8	
9	82.8	10.9	11.6	9.84	9.63	132	25.4	12.0	14.1	392	36.3	41.9	9	
10	54.2	9.77	10.9	8.50	6.67	135	24.0	10.3	11.9 -	703 +	33.1	42.0	10	
11	42.5	9.17	10.4	48.6	6.12 -	98.0	32.1	9.29	14.7	220	216 +	39.4	11	
12	36.0	8.36	9.95	59.3	145 +	501 +	16.9	8.44	324	187	108	38.0	12	
13	31.3	8.21 -	9.53	67.0 +	50.4	247	20.3	7.68	82.0	109	88.3	36.2	13	
14	26.6	8.37	9.05	32.3	37.3	128	15.9	6.91	37.3	62.5	53.2	35.1	14	
15	23.0	10.5	8.58	24.4	33.1	65.5	39.6	5.50 -	29.5	104	41.4	243	15	
l/s														
16	19.7	10.3	8.22	23.5	45.8	43.7	22.1	166	22.8	54.5	36.5	289	16	
17	17.1 -	10.1	7.96	19.1	35.2	35.6	15.4	19.9	18.8	42.2	32.4	321	17	
18	17.8	11.0	10.4	17.6	30.1	27.9	12.7	13.3	17.7	36.1	28.0	502 +	18	
19	18.7	35.7	27.9 +	14.7	29.6	22.6	11.1	10.6	134	31.0	24.8	231	19	
20	53.1	16.0	18.1	13.8	26.2	21.9	24.1	9.38	40.8	25.1	20.8	133	20	
21	166	12.9	13.3	15.2	72.3	20.6	154	8.33	30.0	21.2	18.6	123	21	
22	93.0	11.7	11.7	13.3	22.2	14.7	62.3	9.31	79.0	18.8	16.9	134	22	
23	47.2	11.2	10.7	11.9	52.6	12.5	31.7	7.01	48.4	17.1	15.7	339	23	
+ Maximum														
24	49.5	19.6	10.3	20.5	22.5	11.3	23.6	29.2	36.9	14.9	14.7	126	24	
25	39.1	29.8	9.02	14.1	15.3	75.3	18.8	47.7	28.5	13.4	13.2	87.5	25	
- Minimum														
26	33.8	51.5 +	8.67	11.6	11.8	15.5	15.7	20.0	25.9	14.1	15.0	220	26	
27	33.7	37.9	8.07	10.4	9.94	12.3	13.7	10.8	91.9	80.0	12.3 -	125	27	
28	44.5	32.8	7.68	9.61	8.76	10.9	12.6	8.88	32.5	43.6	20.4	113	28	
29	38.0	28.6	7.48	9.13	9.45	9.77	23.3	7.47	36.7	47.2	49.2	70.0	29	
30	31.2		7.19 -	8.62	8.47	8.65	11.4	25.6	31.9	46.6	40.6	49.9	30	
31	25.8		7.37		6.80		9.83 -	391 +	43.5		41.6		31	
Monatsmittel		65.0	17.5	12.6 -	18.5	25.2	84.2	35.5	34.2	60.2	80.5	52.8	130 +	l/s
Maximum (Spitze) Datum		388 21.	115 19.	52.2 - 19.	369 12.	1540 21.	2250 8.	3590 + 21.	2890 31.	3390 12.	2340 9.	654 11.	890 18.	l/s
Jahresmittel		51.5 l/s												



Periode 1991 - 2012 (22 Jahre)													
Monatsmittel	41.4	37.2	46.0	41.6	44.2	48.6	36.3	35.8	31.7 -	32.3	39.6	52.9 +	l/s
Maximum (Spitze) Jahr	1440 2004	2490 1999	2030 2001	3300 2008	5120 1999	7530 + 1999	5970 2008	5030 1994	3390 2012	2340 2012	1280 - 1998	1730 2011	l/s
Minimum (Tagesmittel) Jahr	6.5 1992	5.6 1992	6.7 + 2011	4.2 2011	2.6 2011	2.2 2011	2.0 2003	1.3 1991	1.2 - 1991	3.1 1992	2.5 2011	2.4 2011	l/s
Periode	Grösstes Jahresmittel 63.1 (2001)			Periodenmittel 40.7				Kleinstes Jahresmittel 25.9 (2011)					l/s

Dauer der Abflüsse (erreicht oder überschritten)													
Tage	1	3	6	9	18	36	55	73	91	114	137	160	
2012	703	501	391	324	220	131	87.5	58.2	46.7	39.4	34.2	29.0	l/s
1991 - 2012	562	335	258	209	146	95.0	65.4	49.6	40.8	33.3	27.7	23.0	l/s
Tage	182	205	228	251	274	292	310	329	347	356	362	365	
2012	23.9	20.5	17.6	14.8	12.6	11.2	9.95	8.84	7.72	7.19	6.67	5.97	l/s
1991 - 2012	19.8	17.2	15.0	13.0	11.2	10.0	8.8	7.4	5.5	4.1	2.7	1.4	l/s

Darstellung nach LHG Standard