

Abfluss

Aabach - Mönchaltorf

ZH 527

Koordinaten 696 925 / 240 800

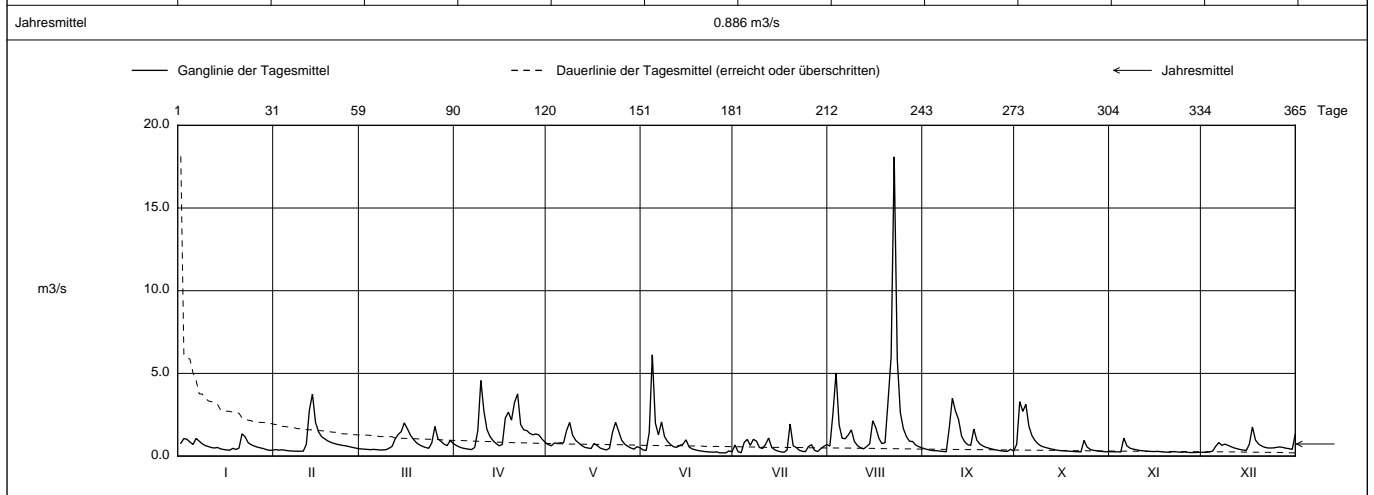
Stations Höhe 440.0 mÜM

Fläche 46 km2

Mittlere Höhe - mÜM

Vergletscherung - %

2005		Jan	Feb	März	April	Mai	Juni	Juli	Aug	Sept	Okt	Nov	Dez	
Tagesmittel	1	0.773	0.395	0.431	0.640	0.700	0.370	0.671	0.611	0.442	0.707	0.266	0.232	1
	2	1.06	0.358	0.417	0.551	0.623	0.338	0.268	2.59	0.390	3.29 +	0.255	0.227 -	2
	3	1.02	0.382	0.402	0.485	0.788	1.44	0.199 -	5.03	0.352	2.70	0.261	0.258	3
	4	0.847	0.354	0.391	0.449	0.775	6.12 +	0.819	1.90	0.327	3.13	0.245	0.304	4
	5	0.702	0.323	0.405	0.420	0.804	1.99	1.01	1.08	0.324	1.80	1.09 +	0.588	5
	6	1.07	0.309	0.392	0.393 -	0.796	1.28	0.652	1.05	0.299	1.23	0.622	0.817	6
	7	0.905	0.299	0.367 -	0.529	1.55	2.07	1.01	1.28	0.281	0.937	0.479	0.654	7
	8	0.747	0.295 -	0.372	1.53	2.03	1.17	0.905	1.59	0.262 -	0.735	0.422	0.719	8
	9	0.632	0.295 -	0.385	4.57 +	1.25	0.881	0.518	0.882	1.73	0.607	0.387	0.651	9
	10	0.578	0.296	0.472	2.72	0.948	0.689	0.456	0.635	3.50 +	0.542	0.345	0.569	10
m3/s	11	0.514	0.710	0.586	1.60	0.787	0.558	0.717	0.507	2.73	0.494	0.323	0.493	11
	12	0.491	2.79	1.03	1.18	0.630	0.531	1.09	0.435 -	2.22	0.441	0.310	0.447	12
	13	0.519	3.75 +	1.31	0.931	0.525	0.650	0.525	0.578	1.22	0.406	0.280	0.393	13
	14	0.436	2.04	1.48	0.758	0.489	0.715	0.380	0.744	0.867	0.364	0.278	0.365	14
	15	0.398	1.46	2.01 +	0.622	0.458	0.984	0.302	2.14	0.692	0.335	0.274	0.388	15
	16	0.371	1.18	1.66	0.702	0.759	0.556	0.255	1.72	0.649	0.320	0.285	0.727	16
	17	0.360	1.04	1.27	2.31	0.634	0.436	0.231	1.07	1.64	0.311	0.267	1.76 +	17
	18	0.467	0.918	1.01	2.65	0.486	0.381	0.364	0.751	0.298	0.476	0.247	0.967	18
	19	0.401	0.833	0.802	2.17	0.417	0.334	1.94 +	0.809	0.722	0.286	0.241	0.731	19
	20	0.482	0.766	0.672	3.25	0.374 -	0.307	0.624	3.34	0.613	0.272	0.230	0.611	20
+ Maximum	21	1.35 +	0.715	0.585	3.76	0.467	0.278	0.521	6.00	0.527	0.263	0.272	0.533	21
	22	1.17	0.678	0.517	1.91	1.44	0.258	0.354	18.1 +	0.476	0.251 -	0.260	0.492	22
	23	0.808	0.641	0.473	1.59	2.05 +	0.243	0.289	5.85	0.425	0.948	0.241	0.488	23
	24	0.688	0.616	0.815	1.54	1.51	0.235	0.268	2.63	0.382	0.548	0.233	0.497	24
	25	0.606	0.572	1.79	1.37	0.957	0.257	0.579	1.66	0.347	0.408	0.251	0.531	25
- Minimum	26	0.540	0.527	1.03	1.29	0.721	0.199	0.689	1.18	0.316	0.350	0.222	0.553	26
	27	0.497	0.491	0.888	1.34	0.589	0.198	0.350	0.897	0.292	0.325	0.212 -	0.519	27
	28	0.453	0.449	0.725	1.27	0.488	0.193 -	0.273	0.882	0.286	0.301	0.215	0.474	28
	29	0.388		0.633	1.02	0.420	0.312	0.445	0.671	0.413	0.277	0.225	0.448	29
	30	0.349 -		0.944	0.839	0.566	0.261	0.588	0.571	0.306	0.263	0.225	0.407	30
31	0.357		0.757		0.502		0.688	0.503		0.263		1.34	31	
Monatsmittel		0.644	0.839	0.807	1.48	0.823	0.808	0.580	2.18 +	0.800	0.755	0.316 -	0.585	m3/s
Maximum (Spitze) Datum		2.19 21.	5.82 13.	5.08 24.	7.69 9.	3.69 7.	15.2 3.	8.32 19.	34.5 + 22.	14.6 9.	5.32 4.	1.36 - 5.	4.91 31.	m3/s
Jahresmittel		0.886 m3/s												



Periode	1980 - 2005 (26 Jahre)												
Monatsmittel	1.15	1.13	1.16	1.04	1.04	1.15	0.877	0.784 -	1.06	0.963	1.12	1.26 +	m3/s
Maximum (Spitze) Jahr	20.0 1980	18.8 1999	15.4 - 1988	26.5 1986	46.5 + 1999	29.9 2004	22.5 1981	39.3 1984	29.1 2000	20.5 1992	17.6 1998	18.9 1995	m3/s
Minimum (Tagesmittel) Jahr	0.163 1992	0.136 1992	0.188 1997	0.162 1997	0.151 1998	0.131 1998	0.084 1998	0.077 - 1998	0.099 2003	0.106 1985	0.131 1985	0.199 + 1995	m3/s
Periode	Grösstes Jahresmittel 1.52 (1981)			Periodenmittel 1.06			Kleinstes Jahresmittel 0.661 (1997)						m3/s

Dauer der Abflüsse (erreicht oder überschritten)													
Tage	1	3	6	9	18	36	55	73	91	114	137	160	
2005	18.1	6.00	4.57	3.50	2.65	1.76	1.34	1.08	0.948	0.796	0.707	0.632	m3/s
1980 - 2005	10.3	6.96	5.34	4.60	3.40	2.32	1.77	1.42	1.21	1.000	0.845	0.729	m3/s
Tage	182	205	228	251	274	292	310	329	347	356	362	365	
2005	0.569	0.507	0.458	0.406	0.365	0.327	0.298	0.268	0.245	0.227	0.199	0.193	m3/s
1980 - 2005	0.641	0.563	0.496	0.432	0.374	0.325	0.288	0.246	0.194	0.162	0.126	0.084	m3/s

Darstellung nach LHG Standard

Ab 18. Mai 1994 neue Messschwelle (erhöhte Messgenauigkeit).