

Abfluss

Eulach - Winterthur

ZH 522

Koordinaten 697 550 / 261 240

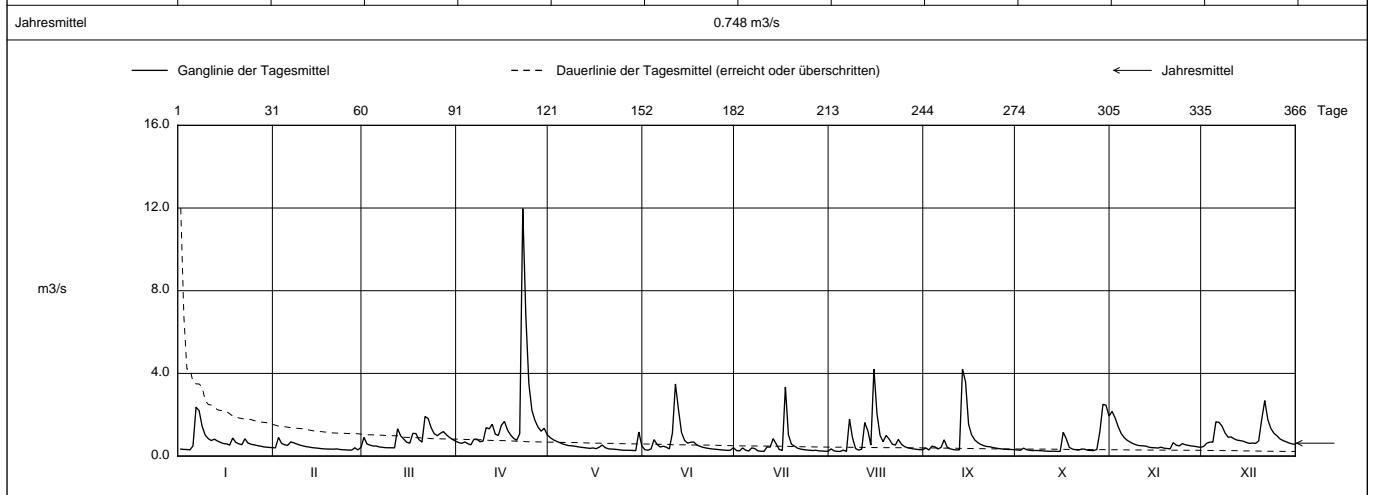
Stations Höhe 440.0 müM

Fläche 63.6 km2

Mittlere Höhe 541.0 müM

Vergletscherung - %

2008	Jan	Feb	März	April	Mai	Juni	Juli	Aug	Sept	Okt	Nov	Dez	
1	0.338	0.399	0.903	0.655	0.891	0.307	0.267	0.349	0.396	0.295	2.16 +	0.470 -	1
2	0.323	0.901 +	0.582	0.614	0.789	0.287	0.253	0.249	0.294 -	0.284	1.84	0.620	2
3	0.317	0.618	0.532	0.685	0.720	0.344	0.394	0.228	0.485	0.383	1.42	0.676	3
4	0.301 -	0.546	0.486	0.600	0.655	0.795	0.285	0.225 -	0.441	0.314	1.09	0.673	4
5	0.491	0.517	0.488	0.545 -	0.591	0.564	0.247	0.292	0.344	0.281	0.887	1.66	5
Tagesmittel													
6	2.37 +	0.687	0.442	0.813	0.546	0.439	0.398	0.226	0.421	0.266	0.758	1.63	6
7	2.20	0.640	0.427	0.821	0.509	0.476	0.363	1.79	0.789	0.272	0.670	1.45	7
8	1.44	0.584	0.407	0.693	0.497	0.433	0.250	0.875	0.425	0.266	0.592	1.12	8
9	1.01	0.531	0.402	0.727	0.477	0.344	0.235	0.365	0.349	0.261	0.538	0.914	9
10	0.844	0.493	0.402	1.37	0.451	1.11	0.227 -	0.288	0.316	0.241	0.505	0.924	10
11	0.752	0.459	0.398 -	1.32	0.428	3.49 +	0.445	0.338	0.297	0.236	0.495	0.832	11
12	0.818	0.437	1.32	1.54	0.411	2.24	0.431	1.62	0.301	0.232	0.485	0.769	12
13	0.731	0.409	0.984	1.06	0.392	1.13	0.843	1.23	4.21 +	0.233	0.433	0.748	13
14	0.662	0.395	0.824	0.996	0.374	0.756	0.587	0.535	3.60	0.227	0.408	0.716	14
15	0.605	0.381	0.668	1.49	0.393	0.624	0.314	4.20 +	1.53	0.227 -	0.403	0.575	15
m3/s													
16	0.591	0.360	0.625	1.68	0.357	0.671	0.274	2.05	1.02	1.16	0.388	0.616	16
17	0.529	0.347	1.10	1.26	0.426	0.681	3.34 +	1.01	0.784	0.833	0.431	0.632	17
18	0.875	0.341	1.09	1.03	0.537	0.538	1.03	0.697	0.654	0.423	0.385	0.614	18
19	0.663	0.338	0.795	0.860	0.408	0.473	0.570	0.999	0.565	0.339	0.365	0.732	19
20	0.595	0.334	0.675	0.763	0.352	0.424	0.484	0.821	0.501	0.310	0.349 -	1.78	20
21	0.550	0.347	1.92 +	1.08	0.339	0.392	0.380	0.580	0.463	0.287	0.649	2.69 +	21
22	0.837	0.323	1.82	12.0 +	0.331	0.367	0.338	0.530	0.450	0.341	0.532	1.77	22
23	0.633	0.306	1.37	6.79	0.317	0.343	0.313	0.804	0.412	0.335	0.492	1.34	23
+ Maximum													
24	0.573	0.299	1.08	3.49	0.297	0.333	0.293	0.578	0.384	0.283	0.601	1.10	24
25	0.546	0.290 -	0.986	2.21	0.283	0.317	0.283	0.461	0.362	0.269	0.548	0.981	25
- Minimum													
26	0.509	0.290 -	1.10	1.72	0.283	0.299	0.268	0.405	0.342	0.265	0.516	0.828	26
27	0.484	0.404	1.19	1.40	0.280	0.290	0.283	0.371	0.330	0.321	0.490	0.750	27
28	0.451	0.298	1.03	1.20	0.272	0.277 -	0.252	0.344	0.324	1.18	0.473	0.691	28
29	0.431	0.419	0.903	1.35	0.265 -	0.285	0.245	0.327	0.320	2.50 +	0.446	0.631	29
30	0.419	0.805	0.805	1.04	1.17 +	0.408	0.237	0.310	0.308	2.46	0.422	0.588	30
31	0.407	0.723	0.723	0.489	0.489	0.489	0.234	0.314	0.314	1.94	0.569	0.569	31
Monatsmittel	0.719	0.438 -	0.854	1.73 +	0.469	0.648	0.463	0.755	0.714	0.557	0.659	0.973	m3/s
Maximum (Spitze) Datum	4.50 6.	1.91 - 2.	4.61 12.	22.4 + 22.	13.7 30.	16.1 10.	12.3 17.	22.4 7.	12.0 13.	5.08 16.	2.52 1.	3.36 21.	m3/s
Jahresmittel	0.748 m3/s												



Periode	1965 - 2008 (44 Jahre)												
Monatsmittel	1.01	1.15 +	1.14	1.08	0.913	0.872	0.640	0.605	0.557 -	0.586	0.783	1.03	m3/s
Maximum (Spitze) Jahr	18.1 1995	25.1 1999	18.8 1978	22.4 2008	47.6 + 1994	31.0 1968	42.2 1972	41.4 2007	43.2 1968	12.2 - 1981	14.3 1972	24.8 1988	m3/s
Minimum (Tagesmittel) Jahr	0.187 1971	0.219 1992	0.280 + 1972	0.245 1997	0.187 1997	0.125 1976	0.051 - 1976	0.088 2003	0.075 2003	0.088 2003	0.131 1971	0.186 1997	m3/s
Periode	Grösstes Jahresmittel 1.27 (1965)			Periodenmittel 0.862				Kleinstes Jahresmittel 0.494 (2003)				m3/s	

Dauer der Abflüsse (erreicht oder überschritten)													
Tage	1	3	6	9	18	36	55	73	91	114	137	160	
2008	12.0	4.21	3.49	2.69	1.94	1.40	1.10	0.924	0.821	0.697	0.625	0.565	m3/s
1965 - 2008	7.95	5.17	3.80	3.27	2.40	1.73	1.38	1.15	1.01	0.860	0.752	0.663	m3/s
Tage	182	205	228	251	274	292	310	329	347	356	362	365	
2008	0.501	0.451	0.412	0.385	0.344	0.323	0.301	0.283	0.261	0.236	0.227	0.225	m3/s
1965 - 2008	0.588	0.519	0.460	0.408	0.359	0.323	0.286	0.247	0.200	0.168	0.137	0.088	m3/s

Darstellung nach LHG Standard