

Abfluss

Töss - Rämismühle, Zell

ZH 520

Koordinaten 2 703 795 / 1 255 605

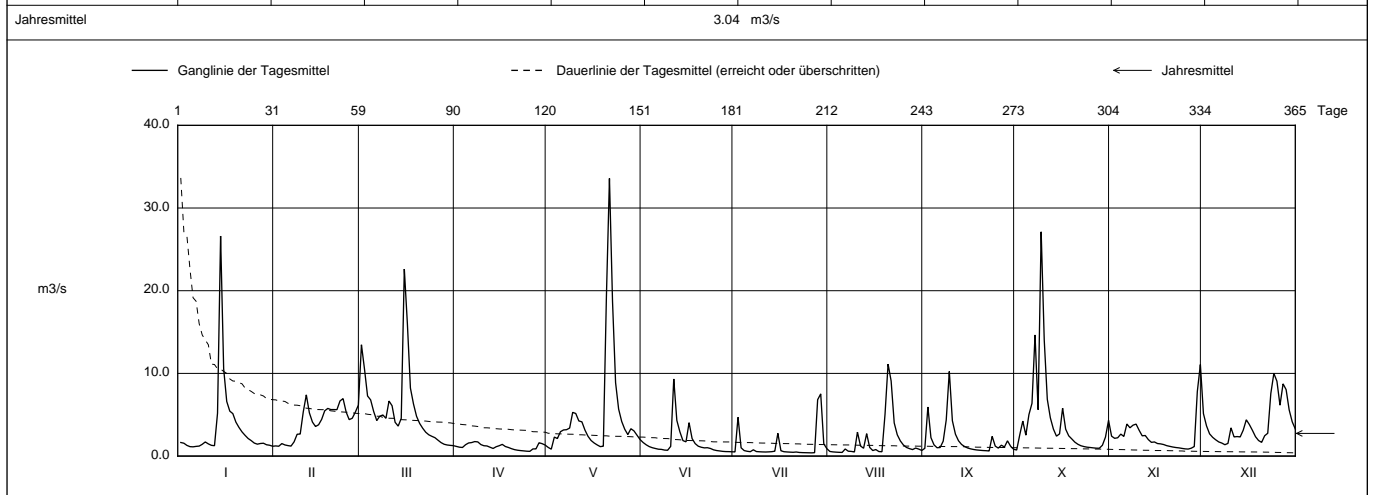
Stations Höhe 524.0 müM

Fläche 127 km2

Mittlere Höhe 790.0 müM

Vergletscherung - %

2019	Jan	Feb	März	April	Mai	Juni	Juli	Aug	Sept	Okt	Nov	Dez	
1	1.64	1.23	13.5	1.17	1.05	1.64	0.502	0.558	0.937	0.737 -	2.41	5.13	1
2	1.56	1.19 -	10.5	1.08	0.834 -	1.36	4.69	0.508	5.94	2.55	2.15	3.66	2
3	1.29	1.51	7.27	1.04	2.30	1.15	1.000	0.477	2.23	4.23	2.22	2.69	3
4	1.14	1.35	6.80	1.37	2.12	1.01	0.669	0.454	1.36	2.53	2.66	2.27	4
5	1.12 -	1.27	5.38	1.59	2.95	0.919	0.582	0.443 -	1.01	5.02	2.88	1.97	5
Tagesmittel													
6	1.18	1.21	4.30	1.64	3.16	0.833	0.533	0.857	1.04	6.38	3.88	1.71	6
7	1.21	1.72	4.83	1.75 +	3.19	0.809	0.761	0.589	1.81	14.7	3.42	1.57	7
8	1.42	2.64	4.97	1.72	3.39	0.726	0.550	0.566	4.38	5.61	3.74	1.38 -	8
9	1.71	2.67	4.57	1.39	5.29	0.702	0.523	0.497	10.2 +	27.1 +	3.87	1.53	9
10	1.47	5.36	6.66	1.25	5.15	1.18	0.504	2.90	4.28	14.0	3.12	3.42	10
11	1.30	7.41 +	6.09	1.23	4.25	9.33 +	0.493	1.22	2.65	6.87	2.45	2.32	11
12	1.26	5.23	4.09	1.07	4.14	4.32	0.510	0.949	1.85	4.63	2.49	2.36	12
13	5.18	4.11	3.63	0.923	3.14	2.94	0.533	2.71	1.41	3.27	1.99	2.32	13
14	26.6 +	3.58	4.56	1.13	2.39	1.87	0.590	1.04	1.16	2.41	1.66	3.14	14
15	10.6	3.79	22.6 +	1.26	1.89	1.72	2.76	0.671	0.977	2.69	1.71	4.39	15
m3/s													
16	6.61	4.44	16.0	1.42	1.58	4.04	0.650	0.789	0.872	5.79	1.52	3.81	16
17	5.44	5.47	8.23	1.16	1.35	2.12	0.528	0.548	0.795	3.26	1.48	3.11	17
18	5.13	5.77	6.30	1.04	1.15	1.51	0.500	0.525	0.740	2.45	1.40	2.35	18
19	4.11	5.63	4.81	0.897	1.19	1.20	0.477	5.06	0.703	2.07	1.26	1.88	19
20	3.47	5.63	3.96	0.782	19.2	1.07	0.457	11.1 +	0.672	1.69	1.18	1.66	20
21	2.92	5.61	3.37	0.711	33.6 +	0.995	0.494	9.08	0.653	1.43	1.10	2.46	21
22	2.51	6.67	2.89	0.665	18.7	1.01	0.438	4.02	0.618 -	1.25	1.04	2.76	22
23	2.13	6.95	2.57	0.630	8.88	0.919	0.418	2.58	2.39	1.15	0.995	7.56	23
+ Maximum													
24	1.87	5.33	2.39	0.591	5.69	0.754	0.409	1.84	1.21	1.08	0.929	10.0 +	24
25	1.58	4.41	2.23	0.574 -	4.19	0.671	0.401	1.35	0.964	1.04	0.874	9.05	25
- Minimum													
26	1.44	4.58	1.92	0.864	3.24	0.622	0.390 -	1.05	1.32	0.994	0.849 -	6.16	26
27	1.52	5.31	1.63	0.871	2.60	0.571	0.410	0.899	1.10	0.959	0.952	8.74	27
28	1.56	6.17	1.43	1.61	3.31	0.546	6.82	0.788	1.85	0.950	1.16	8.04	28
29	1.37	1.34	1.50	3.05	0.538	7.53 +	0.972	1.21	1.31	1.31	7.82	5.59	29
30	1.31	1.30	1.33	2.53	0.523 -	1.49	0.847	0.823	2.30	11.1 +	4.14	4.14	30
31	1.19		1.26 -	2.00			0.899	0.680	4.32		3.28		31
Monatsmittel	3.32	4.15	5.53 +	1.14 -	5.08	1.59	1.21	1.83	1.91	4.35	2.46	3.89	m3/s
Maximum (Spitze)	39.7	8.90	41.5	2.22 -	52.8 +	18.4	26.1	18.2	15.5	49.5	20.0	12.2	m3/s
Datum	14.	11.	15.	5.	21.	11.	2.	20.	9.	9.	30.	24.	
Jahresmittel	3.04 m3/s												



Periode	1988 - 2019 (32 Jahre)												
Monatsmittel	3.48	3.25	4.76 +	3.92	3.58	3.49	2.66	2.10 -	2.31	2.31	3.13	3.97	m3/s
Maximum (Spitze) Jahr	73.4 2018	110 1999	60.3 1988	86.9 2008	145 + 1999	133 2013	111 2014	125 2007	87.5 2002	52.5 - 2012	67.5 1992	81.8 2018	m3/s
Minimum (Tagesmittel) Jahr	0.31 2017	0.40 1992	0.39 1993	0.43 + 2011	0.31 2011	0.32 2011	0.20 2018	0.18 2018	0.16 2015	0.13 2015	0.09 - 2015	0.16 2018	m3/s
Periode	Grösstes Jahresmittel 4.98 (1999)			Periodenmittel 3.25				Kleinstes Jahresmittel 1.89 (2003)					m3/s

Dauer der Abflüsse (erreicht oder überschritten)													
Tage	1	3	6	9	18	36	55	73	91	114	137	160	
2019	33.6	26.6	18.7	14.0	9.08	6.38	5.31	4.41	3.88	3.11	2.49	2.12	m3/s
1988 - 2019	34.0	24.6	19.0	15.8	11.2	7.45	5.72	4.63	3.84	3.08	2.49	2.06	m3/s
Tage	182	205	228	251	274	292	310	329	347	356	362	365	
2019	1.66	1.43	1.27	1.16	1.01	0.899	0.761	0.591	0.510	0.477	0.410	0.390	m3/s
1988 - 2019	1.72	1.43	1.17	0.97	0.81	0.69	0.58	0.48	0.35	0.28	0.19	0.11	m3/s

Darstellung nach LHG Standard