

Abfluss

Töss - Rämismühle, Zell

ZH 520

Koordinaten 2 703 795 / 1 255 605

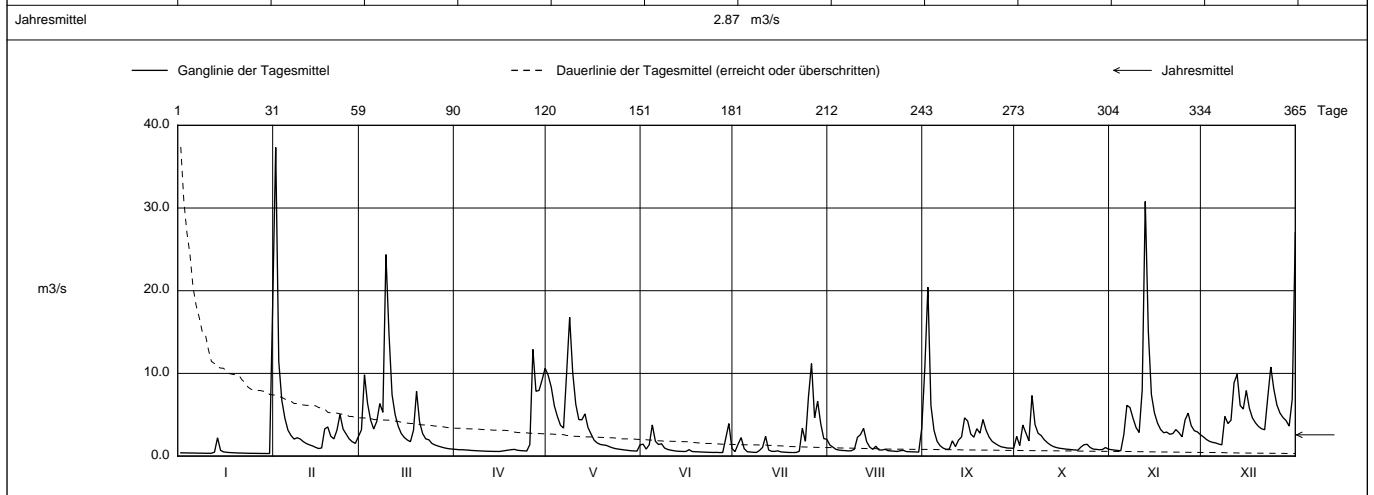
Stations Höhe 524.0 müM

Fläche 127 km2

Mittlere Höhe 790.0 müM

Vergletscherung - %

2017		Jan	Feb	März	April	Mai	Juni	Juli	Aug	Sept	Okt	Nov	Dez	
1		0.390	37.3 +	3.18	0.806	9.76	1.43	0.538	1.34	10.6	2.37	0.773	2.32	1
2		0.388	11.4	9.83	0.763	8.33	0.844	1.43	1.08	20.4 +	1.27	0.721	2.00	2
3		0.380	6.74	6.36	0.771	6.08	1.37	2.23	0.811	6.12	3.76	0.676	1.78	3
4		0.375	4.57	4.36	0.739	4.79	3.77	0.902	0.726	3.11	2.81	0.648 -	1.66	4
5		0.370	3.13	3.28	0.720	3.74	1.80	0.530	0.685	1.79	1.84	2.62	1.59	5
Tagesmittel														
6		0.360	2.49	4.19	0.680	3.39	1.40	0.495	0.662	1.25	7.32 +	6.14	1.46	6
7		0.354	2.06	6.35	0.661	9.96	1.49	0.458	0.626	0.964	3.80	5.88	1.36 -	7
8		0.348	2.22	5.29	0.640	16.8 +	0.977	0.438	0.645	0.816 -	2.76	4.58	4.80	8
9		0.340	2.07	24.4 +	0.621	10.2	0.805	0.681	0.833	0.848	2.49	3.45	3.94	9
10		0.338	1.75	14.8	0.603	6.28	0.720	1.05	2.26	1.85	1.98	2.86	4.34	10
11		0.343	1.52	7.42	0.587	4.41	0.651	2.39	2.61	1.15	1.63	7.97	8.88	11
12		0.476	1.36	5.03	0.581	4.39	0.598	0.741	3.36	1.93	1.35	30.8 +	9.89	12
13		2.21	1.24	3.62	0.565	5.11	0.574	0.575	1.75	2.32	1.16	15.1	6.12	13
14		0.688	1.06	2.73	0.565	3.45	0.557	0.571	1.09	4.63	1.03	7.45	5.69	14
15		0.502	0.914 -	2.25	0.556 -	2.67	0.559	0.633	0.812	4.23	0.950	5.23	7.92	15
m3/s														
16		0.458	0.984	1.94	0.609	1.92	0.779	0.506	1.20	2.67	0.899	3.99	5.79	16
17		0.426	3.28	1.74	0.667	1.59	0.553	0.476	0.750	2.28	0.847	3.23	4.61	17
18		0.407	3.52	3.12	0.723	1.41	0.530	0.451	0.731	3.31	0.813	2.83	4.01	18
19		0.388	2.39	7.83	0.782	1.35	0.514	0.434	0.818	2.77	0.778	2.90	3.58	19
20		0.373	2.09	4.09	0.811	1.30	0.493	0.429 -	0.659	4.42	0.740	2.64	3.30	20
21		0.363	3.13	2.71	0.704	1.13	0.477	0.439	0.623	3.14	0.717 -	2.72	3.19	21
22		0.350	5.04	2.09	0.664	1.00	0.461	0.581	0.591	2.30	1.10	3.21	7.10	22
23		0.341	3.28	1.98	0.634	0.899	0.447	3.36	0.560	1.78	1.37	2.83	10.8	23
+ Maximum														
24		0.336	2.67	1.53	0.619	0.841	0.440	1.79	0.649	1.53	1.42	2.33	8.07	24
25		0.331	2.08	1.35	1.40	0.789	0.449	7.20	0.692	1.29	1.04	4.36	6.18	25
- Minimum														
26		0.325	1.74	1.22	12.9 +	0.739	0.425 -	11.2 +	0.545	1.12	0.844	5.20	5.20	26
27		0.319	1.54	1.11	7.84	0.695	0.431	4.62	0.529	1.05	0.817	3.69	4.66	27
28		0.316	2.36	1.00	7.94	0.650	2.18	6.63	0.513	0.972	0.768	3.07	4.29	28
29		0.310 -		0.923	9.22	0.624	3.93 +	3.94	0.499	0.960	0.794	2.93	3.63	29
30		0.314		0.871	10.6	0.606 -	0.933	2.12	0.483 -	0.943	1.03	2.59	6.90	30
31		18.2 +		0.836 -		1.36		2.03	3.37 +		0.834		27.0 +	31
Monatsmittel		1.01 -	4.07	4.43	2.20	3.75	1.02	1.93	1.05	3.09	1.66	4.78	5.55 +	m3/s
Maximum (Spitze)		59.4	61.3 +	33.1	16.1	24.0	22.4	19.5	13.4 -	34.3	13.6	38.8	40.7	m3/s
Datum		31.	1.	9.	26.	8.	28.	23.	31.	2.	6.	12.	31.	
Jahresmittel		2.87 m3/s												



Periode		1988 - 2017											(30 Jahre)	
Monatsmittel		3.28	3.22	4.80 +	4.09	3.63	3.64	2.79	2.17 -	2.38	2.31	3.25	3.93	m3/s
Maximum (Spitze)		68.7	110	60.3	86.9	145 +	133	111	125	87.5	52.5 -	67.5	73.1	m3/s
Jahr		2015	1999	1988	2008	1999	2013	2014	2007	2002	2012	1992	1991	
Minimum (Tagesmittel)		0.31	0.40	0.39	0.43 +	0.31	0.32	0.31	0.21	0.16	0.13	0.09 -	0.30	m3/s
Jahr		2017	1992	1993	2011	2011	2011	1998	2003	2015	2015	2015	2011	
Periode		Grösstes Jahresmittel 4.98 (1999)			Periodenmittel 3.29				Kleinstes Jahresmittel 1.89 (2003)				m3/s	

Dauer der Abflüsse (erreicht oder überschritten)														
Tage		1	3	6	9	18	36	55	73	91	114	137	160	
2017		37.3	27.0	18.2	14.8	9.89	6.74	5.03	4.09	3.37	2.81	2.28	1.79	m3/s
1988 - 2017		34.6	24.6	19.0	16.0	11.3	7.54	5.80	4.68	3.89	3.12	2.54	2.10	m3/s
Tage		182	205	228	251	274	292	310	329	347	356	362	365	
2017		1.40	1.10	0.899	0.778	0.680	0.621	0.556	0.458	0.375	0.341	0.319	0.310	m3/s
1988 - 2017		1.76	1.47	1.20	0.99	0.83	0.71	0.60	0.49	0.38	0.31	0.22	0.11	m3/s

Darstellung nach LHG Standard