

Abfluss

Töss - Wülflingen, Winterthur

ZH 518

Koordinaten 2 694 260 / 1 262 120

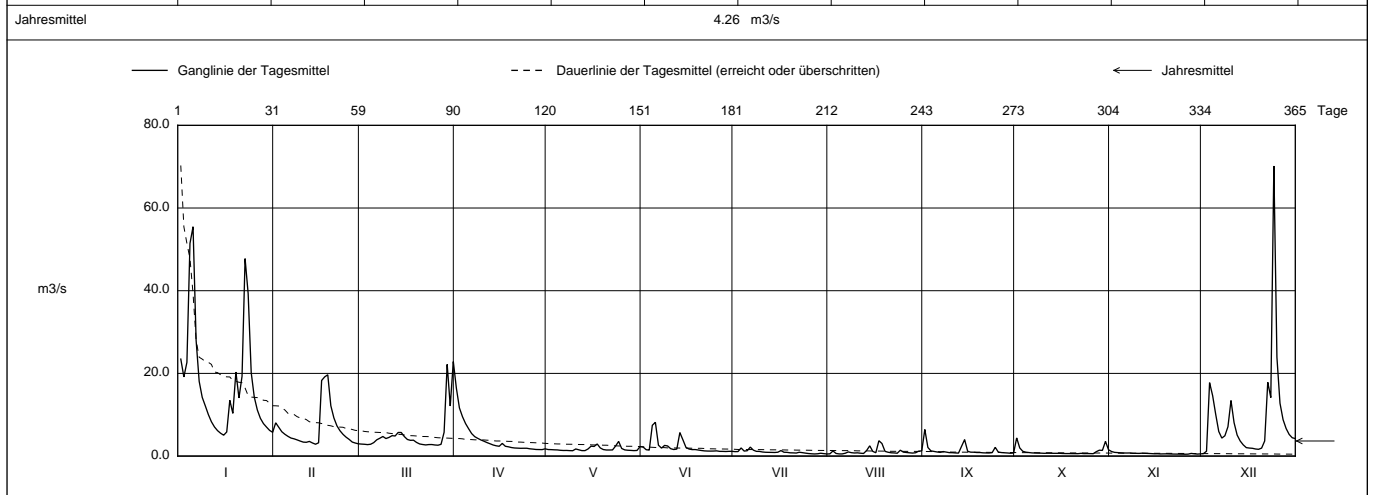
Stations Höhe 430.0 mÜM

Fläche 260 km2

Mittlere Höhe 688.0 mÜM

Vergletscherung - %

2018		Jan	Feb	März	April	Mai	Juni	Juli	Aug	Sept	Okt	Nov	Dez	
1	23.5	8.05	2.90	16.5 +	1.58	2.18	1.08	0.541	6.43 +	4.40 +	1.10 +	0.603 -	1	
2	19.1	6.97	2.86	11.7	1.56	1.55	1.09	1.24	2.09	1.98	0.894	1.17	2	
3	22.7	5.89	2.78	9.53	1.52	1.44	1.97	0.637	1.26	1.16	0.846	17.8	3	
4	51.4	5.27	2.86	7.87	1.49	7.44	1.21	0.522 -	1.13	0.946	0.790	14.6	4	
5	55.5 +	4.77	3.25	6.63	1.40	8.17 +	1.30	0.522 -	0.992	0.857	0.750	10.1	5	
Tagesmittel														
6	28.0	4.36	3.94	5.45	1.36	2.63	2.18 +	0.683	0.895	0.766	0.743	5.96	6	
7	18.1	4.18	4.32	4.70	1.37	1.93	1.44	1.01	1.10	0.743	0.752	4.36	7	
8	14.2	3.92	4.75	4.28	1.32	2.58	1.14	0.829	0.965	0.721	0.667	4.91	8	
9	12.2	3.63	4.25	3.90	1.30 -	2.45	1.13	0.751	0.834	0.708	0.663	7.11	9	
10	10.1	3.38	4.52	3.60	1.72	1.78	0.984	0.789	0.818	0.672	0.653	13.4	10	
11	8.30	3.34	4.94	3.27	1.52	1.59	0.925	0.696	0.760	0.694	0.704	8.09	11	
12	7.05	3.55	4.86	2.98	1.32	1.70	0.904	0.633	0.720	0.694	0.671	5.10	12	
13	6.16	3.17	5.71	2.69	1.32	5.69	0.889	1.36	2.36	0.668	0.637	3.65	13	
14	5.53	2.87 -	5.71	2.49	1.71	3.93	0.873	2.49	3.99	0.668	0.603	2.72	14	
15	5.05 -	4.73	2.37	2.40	2.09	2.09	0.933	1.14	1.15	0.672	0.553	2.05	15	
m3/s														
16	5.84	18.3	4.02	3.07	2.33	1.71	1.34	0.804	0.950	0.635	0.567	1.94	16	
17	13.5	19.2	3.81	2.37	2.93	1.57	0.930	3.72 +	0.935	0.615	0.514	1.89	17	
18	10.3	19.7 +	3.84	2.24	1.97	1.58	0.901	3.04	0.865	0.610	0.533	1.71	18	
19	20.3	12.2	3.30	2.07	1.58	1.47	0.791	1.14	0.862	0.603	0.540	1.64	19	
20	14.1	9.22	2.94	1.96	1.47	1.35	0.773	0.929	0.787	0.595	0.514	1.93	20	
21	19.3	7.32	2.80	1.92	1.47	1.26	0.736	0.799	0.764	0.586	0.489	3.65	21	
22	47.8	6.12	2.70	1.88	1.49	1.22	0.926	0.759	0.750	0.663	0.486	17.9	22	
23	39.3	5.25	2.79	1.90	2.42	1.20	0.832	0.689	0.835	0.600	0.479	14.1	23	
+ Maximum														
24	20.2	4.57	2.79	1.90	3.55 +	1.22	0.716	1.43	2.12	0.615	0.463	70.2 +	24	
25	14.3	4.03	2.69	1.76	1.84	1.26	0.620	0.956	0.968	0.603	0.447 -	23.9	25	
- Minimum														
26	11.1	3.40	2.63 -	1.69	1.49	1.15	0.555	0.874	0.853	0.582 -	0.473	12.8	26	
27	9.13	3.15	2.84	1.60	1.42	1.14	0.516	0.795	0.798	1.06	0.644	8.83	27	
28	7.86	2.97	5.77	1.58	1.37	1.11 -	0.559	0.730	0.757	1.43	0.553	6.67	28	
29	7.01		22.2	1.57 -	1.33	1.15	0.690	0.807	0.683 -	1.37	0.484	5.24	29	
30	6.22		12.1	1.76	1.36	1.15	0.592	1.19	0.739	3.56	0.526	4.43	30	
31	5.75		22.9 +		2.31		0.512 -	1.27		1.53		4.24	31	
Monatsmittel		17.4 +	6.50	5.24	3.91	1.72	2.22	0.969	1.09	1.31	1.03	0.625 -	9.12	m3/s
Maximum (Spitze) Datum		120 4.	35.3 17.	34.8 29.	21.2 1.	11.4 23.	56.0 4.	8.29 3.	21.7 17.	13.9 13.	8.29 1.	1.93 - 1.	126 24. +	m3/s
Jahresmittel		4.26 m3/s												



Periode		1965 - 2018 (54 Jahre)												
Monatsmittel		6.59	7.15	8.26 +	7.88	6.63	6.87	5.17	4.50	4.42	4.05 -	5.45	7.09	m3/s
Maximum (Spitze) Jahr		142 2015	195 1999	145 1978	182 2008	252 + 1999	195 2013	212 1977	194 1978	218 1968	98.6 - 2012	123 1965	126 2018	m3/s
Minimum (Tagesmittel) Jahr		0.86 1971	1.00 1992	1.00 1972	1.14 + 1997	0.90 2011	0.68 1976	0.40 - 1976	0.45 2003	0.54 2003	0.52 1985	0.45 2018	0.60 2018	m3/s
Periode		Grösstes Jahresmittel 9.48 (1965)			Periodenmittel 6.16			Kleinstes Jahresmittel 3.54 (2003)					m3/s	

Dauer der Abflüsse (erreicht oder überschritten)														
Tage		1	3	6	9	18	36	55	73	91	114	137	160	
2018		70.2	51.4	28.0	22.9	18.3	10.3	6.67	5.24	4.25	3.30	2.69	1.98	m3/s
1965 - 2018		64.9	40.4	31.6	26.9	19.0	13.5	10.3	8.52	7.27	6.04	5.09	4.32	m3/s
Tage		182	205	228	251	274	292	310	329	347	356	362	365	
2018		1.64	1.43	1.22	0.992	0.853	0.764	0.696	0.635	0.553	0.514	0.479	0.447	m3/s
1965 - 2018		3.71	3.17	2.67	2.30	1.97	1.75	1.54	1.32	1.06	0.87	0.66	0.50	m3/s

Darstellung nach LHG Standard

Einzugsgebiet mit Luppmen.
(Trockenwetterabfluss der Luppmen wird grösstenteils Richtung Pfäffikersee abgeleitet. Einzugsgebiet der Luppmen bis zum Ableitungswehr: 9,3 km2).