

Abfluss

Kempt - Illnau

ZH 517

Koordinaten 696 710 / 252 445

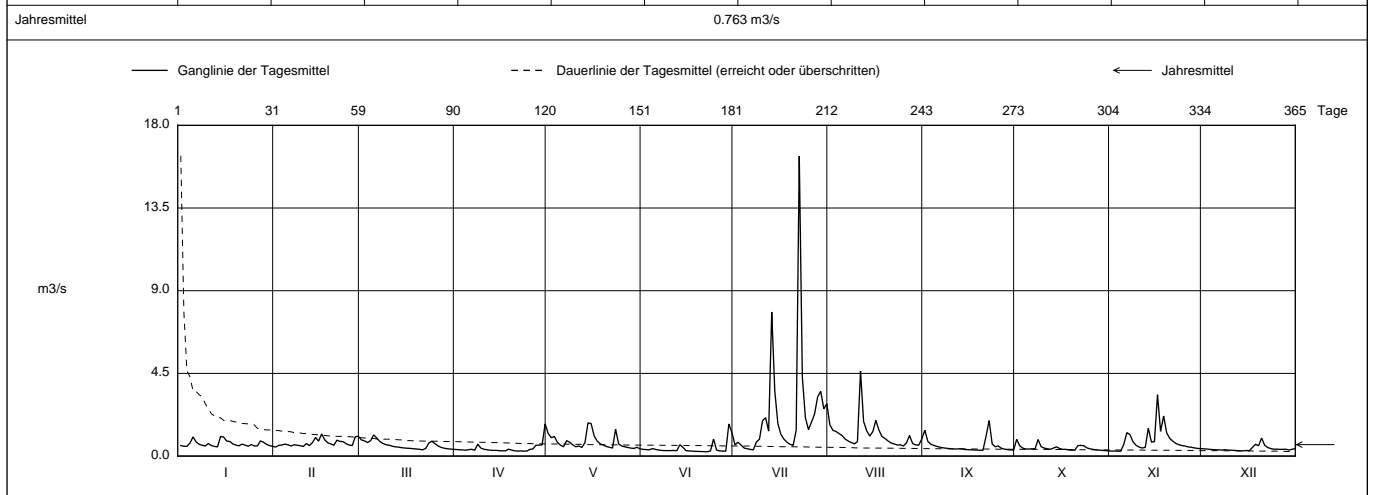
Stations Höhe 500.0 müM

Fläche 37.3 km2

Mittlere Höhe - müM

Vergletscherung - %

2014		Jan	Feb	März	April	Mai	Juni	Juli	Aug	Sept	Okt	Nov	Dez	
Tagesmittel	1	0.575	0.494 -	0.879	0.358	1.23	0.366	0.610	1.70	1.41	0.913 +	0.273	0.398	1
	2	0.535	0.584	0.831	0.341	1.000	0.353	0.755	1.40	0.794	0.558	0.273	0.383	2
	3	0.531	0.602	0.734	0.338	1.07	0.338	0.595	1.34	0.645	0.431	0.269	0.368	3
	4	0.709	0.651	0.840	0.320	0.749	0.407	0.439	1.22	0.576	0.386	0.266 -	0.354	4
	5	1.05	0.615	1.15 +	0.347	0.598	0.367	0.399	1.12	0.523	0.383	0.656	0.345	5
Tagesmittel	6	0.773	0.548	0.984	0.372	0.508	0.328	0.363	0.923	0.480	0.399	1.28	0.338	6
	7	0.639	0.615	0.794	0.320	0.841	0.308	0.343 -	0.817	0.448	0.394	1.17	0.327	7
	8	0.588	0.594	0.689	0.651	0.755	0.301	0.767	0.735	0.427	0.900	0.778	0.345	8
	9	0.547	0.564	0.623	0.435	0.613	0.297	0.920	0.667	0.409	0.509	0.586	0.328	9
	10	0.685	0.522	0.594	0.371	0.507	0.299	1.93	0.788	0.394	0.435	0.491	0.318	10
Tagesmittel	11	0.575	0.679	0.542	0.345	0.548	0.306	2.09	4.63 +	0.383	0.396	0.439	0.313	11
	12	0.525	0.574	0.503	0.321	0.470	0.295	1.36	1.89	0.395	0.371	0.477	0.296	12
	13	0.501 -	0.735	0.492	0.311	0.737	0.619	7.84	1.39	0.390	0.435	1.51	0.288 -	13
	14	1.07 +	1.01	0.462	0.310	1.81 +	0.473	3.54	1.09	0.362	0.504	0.763	0.288 -	14
	15	1.04	0.812	0.440	0.294	1.77	0.296	1.77	1.32	0.351	0.415	0.782	0.305	15
m3/s	16	0.816	1.21 +	0.428	0.288	1.11	0.282	1.18	1.94	0.342	0.366	3.34 +	0.295	16
	17	0.796	0.888	0.418	0.285	0.817	0.269	0.921	1.42	0.334	0.370	1.35	0.470	17
	18	0.663	0.724	0.400	0.375	0.666	0.262	0.750	1.06	0.328	0.334	2.18	0.645	18
	19	0.598	0.659	0.386	0.328	0.600	0.252	0.640	0.961	0.318 -	0.320	1.26	0.558	19
	20	0.560	0.589	0.368	0.287	0.523	0.248	0.582	0.822	0.319	0.327	0.967	0.983 +	20
+ Maximum	21	0.649	0.867	0.341 -	0.276	0.479	0.239	1.42	0.714	1.09	0.572	0.810	0.588	21
	22	0.596	0.800	0.416	0.279	0.438	0.235 -	16.3 +	0.657	1.93 +	0.582	0.687	0.465	22
	23	0.537	0.787	0.711	0.272	1.47	0.282	4.31	0.606	0.661	0.557	0.616	0.408	23
	24	0.626	0.671	0.805	0.271 -	0.665	0.926	2.08	0.613	0.509	0.441	0.572	0.375	24
	25	0.554	0.600	0.674	0.364	0.547	0.322	1.45	0.552 -	0.549	0.393	0.547	0.377	25
- Minimum	26	0.549	0.576	0.555	0.387	0.506	0.284	1.85	0.719	0.425	0.364	0.500	0.366	26
	27	0.826	1.06	0.475	0.591	0.467	0.268	2.29	1.12	0.380	0.337	0.482	0.368	27
	28	0.752	1.07	0.429	0.592	0.435	0.271	3.22	0.688	0.354	0.327	0.445	0.371	28
	29	0.637	0.399	0.399	0.613	0.416	1.75 +	3.52	0.610	0.338	0.307	0.419	0.329	29
	30	0.571	0.384	0.384	1.75 +	0.479	1.28	2.58	0.595	0.323	0.293	0.404	0.375	30
31	0.529	0.366	0.366	0.395 -	0.395 -	0.395 -	2.85	0.920	0.285 -	0.285 -	0.285 -	0.407	31	
Monatsmittel		0.664	0.718	0.584	0.413	0.749	0.417	2.25 +	1.13	0.539	0.439	0.820	0.399 -	m3/s
Maximum (Spitze) Datum		1.75 14.	1.48 16.	1.76 5.	3.93 30.	3.02 23.	4.37 29.	30.3 + 22.	10.2 11.	6.01 21.	2.79 1.	5.27 16.	1.34 - 20.	m3/s
Jahresmittel		0.763 m3/s												



Periode	1968 - 2014 (47 Jahre)												
Monatsmittel	0.703	0.830	0.861 +	0.813	0.723	0.810	0.661	0.621	0.566	0.537 -	0.650	0.783	m3/s
Maximum (Spitze) Jahr	13.8 - 1980	28.1 1999	16.6 1978	29.8 2008	40.0 + 1999	33.7 1975	30.3 2014	35.4 2007	36.6 1968	14.5 2012	15.3 1972	22.7 2011	m3/s
Minimum (Tagesmittel) Jahr	0.175 + 1973	0.167 1992	0.080 1972	0.144 1972	0.133 1997	0.073 1976	0.054 - 1976	0.084 2003	0.071 1991	0.079 1985	0.081 1985	0.108 2011	m3/s
Periode	Grösstes Jahresmittel 1.17 (1970)			Periodenmittel 0.712				Kleinstes Jahresmittel 0.382 (2003)					m3/s

Dauer der Abflüsse (erreicht oder überschritten)													
Tage	1	3	6	9	18	36	55	73	91	114	137	160	
2014	16.3	4.63	3.52	2.85	1.89	1.34	1.06	0.879	0.787	0.685	0.616	0.588	m3/s
1968 - 2014	7.78	4.87	3.54	2.94	2.13	1.46	1.10	0.904	0.771	0.648	0.563	0.495	m3/s
Tage	182	205	228	251	274	292	310	329	347	356	362	365	
2014	0.549	0.500	0.435	0.398	0.371	0.351	0.328	0.307	0.284	0.271	0.252	0.235	m3/s
1968 - 2014	0.443	0.401	0.357	0.321	0.286	0.259	0.235	0.208	0.169	0.144	0.115	0.077	m3/s

Einzugsgebiet mit Luppnen.
(Trockenwetterabfluss der Luppnen wird grösstenteils Richtung Pfäffikersee abgeleitet. Einzugsgebiet der Luppnen bis zum Ableitungswehr: 9,3 km2).

Darstellung nach LHG Standard